



# FOUP Load Port

# TAS450

TYPE: A2

The TAS450 is the latest generation of Load Port from TDK, supporting both FOUP and H-MAC. The TAS450 is innovative design, easy set-up, and superior reliability. The TAS450 is a high-performance module that meet your needs for particle-free operation, fast throughput.

# FOUP Load Port

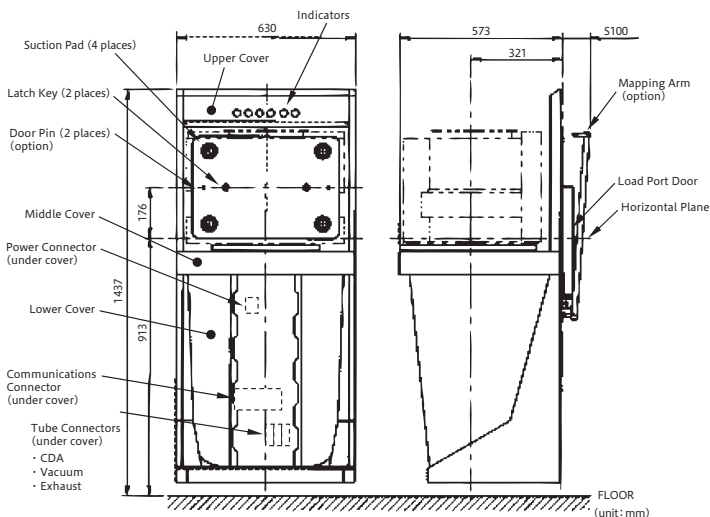
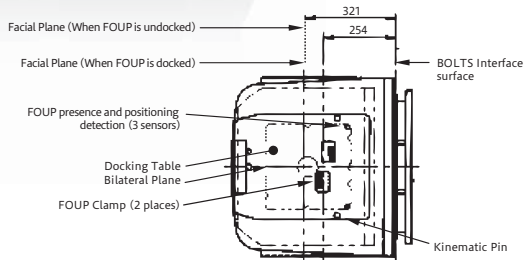
## TAS450 TYPE:A2



### Features

- 1 SEMI Standard E154** MECHANICAL INTERFACE SPECIFICATION FOR 450mm LOAD PORT
- 2** With all moving parts, including mapping unit, are installed below the wafer surface, which provides high-level particle-free design.
- 3** Transmission-type mapping unit optionally available.
- 4** Obstacle detection sensors on Dock position.
- 5** FOUP/H-MAC presence / Placement detection.

#### External View



#### Supported FOUPs

450-mm FOUPs compliant with SEMI E158 and E154

#### Standard Specifications

External Dimensions and Weight	Full Height	1,437mm	
	Full Width	630mm	
	Depth	573mm (From BOLTS interface surface)	
Operation Times	Without mapping (Standard)	Load	Max.10sec (FOUP set→Robot access enable)
		Unload	Max.10sec (Robot access enable→FOUP eject enable)
	With mapping (Option)	Load	Max.15sec (FOUP set→Robot access enable)
		Unload	Max.10sec (Robot access enable→FOUP eject enable)
Docking Mechanism	FOUP clamp	Hold down feature (Air driven)	
	FOUP door lock	Vacuum suction	
	Wafer position at docking	254 mm from BOLTS interface surface	
Utilities	Clean dry air	Pressure	0.52 – 0.60 MPa(G)
		Flow	30L/min (ANR)
	Vacuum	Pressure	-61 ± 10kPa(G)
		Flow	10L/min (ANR)
Exhaust	6-mm outer-diameter air tube		
Interface	Power Source	24VDC ± 5%, 3A (2-A at full load) Breaking capacity: 50A	
	Communication	RS232C	

#### Options

Power Cable	Length	2m ; 4m ; 6m
Carrier ID Reader/Writer	Omron	V640
	Brooks	LF80 ; LF60 Solid
	Asyst	ATR9100
Details about other CIDs available on request.		
E84	Optical I/O only	Hokuyo Automatic DMS-HB1; DMG-HB1
	Serial comm. control	Details available on request.
Interface		
Ethernet (Details available on request.)		
Comm. Protocol		
SECS (Details available on request.)		
Lockout Pads 1,2		
Lockout pins		
Info Pads A, B, C, D, E, F		
Electrical detection and lockout pins		
Doubled-wafer detection sensor		
Details available on request.		
CE Marking		
Yes		

#### Safety and Usage Precautions

TDK has prepared documentation providing important safety precautions and explaining how to use this equipment correctly and efficiently. Please request this documentation and read through it before using this equipment.



TDK Corporation

Technical Center Tel : 81-4-7378-9227

2-15-7 Higashi Owada, Ichikawa-shi, Chiba 272-8558, Japan

Visit our website to learn more about our products.

<http://www.tdk.co.jp/fa/>