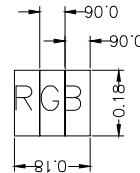
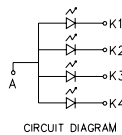


FPC INTERFACE

| | |
|----|--------|
| 1 | DB0 |
| 2 | DB1 |
| 3 | DB2 |
| 4 | DB3 |
| 5 | GND1 |
| 6 | VCC1 |
| 7 | /CS |
| 8 | RS |
| 9 | /WR |
| 10 | /RD |
| 11 | NC |
| 12 | X+ |
| 13 | Y+ |
| 14 | X- |
| 15 | Y- |
| 16 | LEDA |
| 17 | LEDK1 |
| 18 | LEDK2 |
| 19 | LEDK3 |
| 20 | LEDK4 |
| 21 | NC |
| 22 | DB4 |
| 23 | DB10 |
| 24 | DB11 |
| 25 | DB12 |
| 26 | DB13 |
| 27 | DB14 |
| 28 | DB15 |
| 29 | DB16 |
| 30 | DB17 |
| 31 | /RESET |
| 32 | VCI |
| 33 | VCC2 |
| 34 | GND |
| 35 | DB5 |
| 36 | DB6 |
| 37 | DB7 |

NOTES:

- 1.DISPLAY TYPE: TFT
- 2.VIEING DIRECTION: 12:00
- 3 LCD DRIVE IC: ILI9325
- 4.POLARIZER MODE: TRANSMISSIVE/POSITIVE
- 5.DRIVE METHOD: 1/320 DUTY
- 6.VDD: 2.7---3.3V
- 7.BACKLIGHT: 4-CHIP LED PARELLEL
- 8.OPERATING TEMP: -20°C -- 70°C
- 9.STORAGE TEMP: -30°C -- 80°C
- 10.UNMARKED TOLERANCE: ±0.30
- 11.CONTROL DIMENSIONS
- 12.REQUIREMENTS ON ENVIRONMENTAL PROTECTION: RoHS



MULTI-INNO TECHNOLOGY CO.,LTD.

| | | |
|---------------|------------------|----------|
| DRAWN BY: | TITLE: MI0283PT | |
| CHECKED BY: | DWG NO: G-1 | |
| APPROVED BY: | DWG NAME: | UNIT: mm |
| CONFIRMED BY: | SHEET NO: 1 OF 1 | |

| REV | DESCRIPTION | DATE |
|-----|-------------|----------|
| G-1 | ISSUE | 07.12.20 |