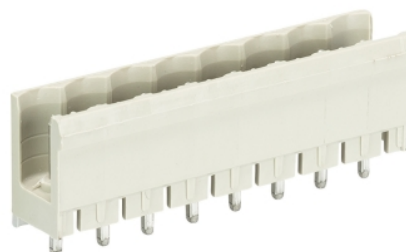


## Data sheet

Commercial Art.No.: 99.203.9996.0

PCB pin header 8113 S / 3 G OB OF

PCB pin header, connection method depends on used socket part , 3 poles, pitch: 5 mm, type of packing: carton, color: grey



Commercial Art.No.	99.203.9996.0
EAN	4015573274839
Order Unit	100

Certificates / Approvals



## Technical data

### General

Modular spacing	5 mm
Soldering process	Wave soldering
Packaging	Carton
Number of poles	3
Number of levels	1
Marking	No
Fastening	None
Mating direction towards (circuit) board	90°

### Technical data

Rated current	12 A
Overvoltage Category I	1000 V
Overvoltage Category II	400 V
Overvoltage Category III	250 V
Rated impulse voltage	4 kV

### Technical Data UL/CSA

Voltage UL	300 V
Current field wiring	15 A
Current factory wiring	15 A
Voltage CSA	300 V
Current CSA	15 A

### Other

Type of insulation material	Thermoplastic
Color	Grey

Height	12 mm
Length	15 mm
Depth	8.4 mm
Material contact base	CuZn
Material contact surface	Sn

#### Classification

ECLASS 11	
ECLASS 8.1	27440402
ETIM 7.0	EC002637
ETIM 6.0	EC002637
ETIM 5.0	EC002637
ETIM 4.0	EC002637

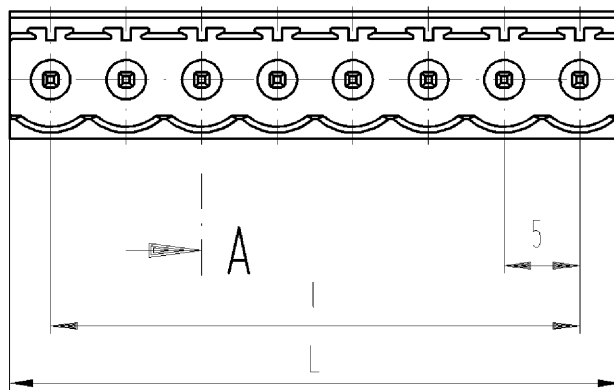
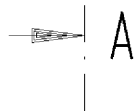
#### Product compliance

ROHS conformity status	Compliant
REACH-SVHC conformity status	Compliant

#### Fits with

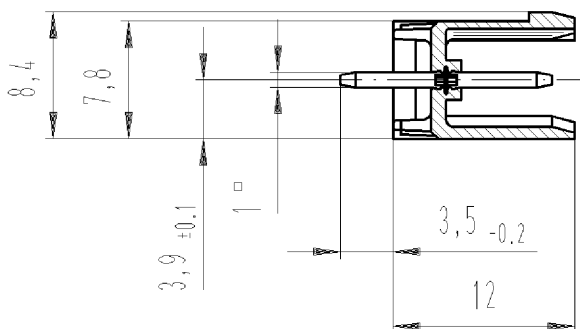
Commercial Art.No.:	Article-type description:	Description:
25.220.3353.0	PCB connector 8113 B / 3 TOP OB	PCB female connector with front/top screw connection, 3 poles, max. cross section: 2.5 mm <sup>2</sup> , pitch: 5 mm, type of packing: carton, color: grey
25.220.0353.0	PCB connector 8113 B / 3 TOP	PCB female connector with front/top screw connection, 3 poles, printed version, max. cross section: 2.5 mm <sup>2</sup> , pitch: 5 mm, type of packing: carton, color: grey
01.060.3353.0	PCB connector 8113 BK / 3 OB	PCB female connector with Crimp connection, 3 poles, max. cross section: 2.5 mm <sup>2</sup> , pitch: 5 mm, type of packing: carton, color: grey
01.060.0353.0	PCB connector 8113 BK / 3	PCB female connector with Crimp connection, 3 poles, printed version, max. cross section: 2.5 mm <sup>2</sup> , pitch: 5 mm, type of packing: carton, color: grey
25.320.3353.0	PCB connector 8113 B / 3 OB	PCB female connector with screw connection with rising cage clamp system, 3 poles, max. cross section: 2.5 mm <sup>2</sup> , pitch: 5 mm, type of packing: carton, color: grey
25.320.0353.0	PCB connector 8113 B / 3	PCB female connector with screw connection with rising cage clamp system, 3 poles, printed version, max. cross section: 2.5 mm <sup>2</sup> , pitch: 5 mm, type of packing: carton, color: grey
25.325.3353.0	PCB connector 8113 B / 3 VR OB	PCB female connector with screw connection with rising cage clamp system, 3 poles, max. cross section: 2.5 mm <sup>2</sup> , pitch: 5 mm, type of packing: carton, color: grey
25.325.0353.0	PCB connector 8113 B / 3 VR	PCB female connector with screw connection with rising cage clamp system, 3 poles, printed version, max. cross section: 2.5 mm <sup>2</sup> , pitch: 5 mm, type of packing: carton, color: grey
25.326.3353.0	PCB connector 8113 B / 3 VL OB	PCB female connector with screw connection with rising cage clamp system, 3 poles, max. cross section: 2.5 mm <sup>2</sup> , pitch: 5 mm, type of packing: carton, color: grey
25.326.0353.0	PCB connector 8113 B / 3 VL	PCB female connector with screw connection with rising cage clamp system, 3 poles, printed version, max. cross section: 2.5 mm <sup>2</sup> , pitch: 5 mm, type of packing: carton, color: grey
25.820.3353.0	PCB connector 8113 BFK / 3 TOP OB	PCB female connector with tension spring connection, 3 poles, max. cross section: 2.5 mm <sup>2</sup> , pitch: 5 mm, type of packing: carton, color: grey

25.820.0353.0	PCB connector 8113 BFK / 3 TOP	PCB female connector with tension spring connection, 3 poles, printed version, max. cross section: 2.5 mm <sup>2</sup> , pitch: 5 mm, type of packing: carton, color: grey
---------------	--------------------------------	--



Schnitt A-A  
section A-A

gezeichnete Ausführung: 8-polig  
drawn version 8 poles



Weitere Daten siehe Katalog  
further data see catalog

Teile-Nr. part no.	Pol- zahl pole	L	l	Typ type	Teile-Nr. part no.	Pol- zahl pole	L	l	Typ type
99.202.9996.0	2	10,0	5	8113S/ 2G OB GR OF	99.213.9996.0	13	65,0	60	8113S/13G OB GR OF
99.203.9996.0	3	15,0	10	8113S/ 3G OB GR OF	99.214.9996.0	14	70,0	65	8113S/14G OB GR OF
99.204.9996.0	4	20,0	15	8113S/ 4G OB GR OF	99.215.9996.0	15	75,0	70	8113S/15G OB GR OF
99.205.9996.0	5	25,0	20	8113S/ 5G OB GR OF	99.216.9996.0	16	80,0	75	8113S/16G OB GR OF
99.206.9996.0	6	30,0	25	8113S/ 6G OB GR OF	99.217.9996.0	17	85,0	80	8113S/17G OB GR OF
99.207.9996.0	7	35,0	30	8113S/ 7G OB GR OF	99.218.9996.0	18	90,0	85	8113S/18G OB GR OF
99.208.9996.0	8	40,0	35	8113S/ 8G OB GR OF	99.219.9996.0	19	95,0	90	8113S/19G OB GR OF
99.209.9996.0	9	45,0	40	8113S/ 9G OB GR OF	99.220.9996.0	20	100,0	95	8113S/20G OB GR OF
99.210.9996.0	10	50,0	45	8113S/10G OB GR OF	99.221.9996.0	21	105,0	100	8113S/21G OB GR OF
99.211.9996.0	11	55,0	50	8113S/11G OB GR OF	99.222.9996.0	22	110,0	105	8113S/22G OB GR OF
99.212.9996.0	12	60,0	55	8113S/12G OB GR OF	99.223.9996.0	23	115,0	110	8113S/23G OB GR OF
					99.224.9996.0	24	120,0	115	8113S/24G OB GR OF

Tolerierung nach DIN 7167/Tolerance system acc. to DIN 7167.

(This DIN-standard describes the envelope principle. According to the envelope principle the deviations of form and parallelism are limited by the size tolerances).

ja/yes ☒ Stoffverbots- und Deklarationsliste nach UU-TQM-05/03 ist einzuhalten.  
Conformity with Wieland document UU-TQM-05/03 (list of prohibited /  
declarable hazardous substances) to be declared!

Freitoleranz nach  
General tolerance

CAD - Zeichnung, keine manuellen Änderungen  
CAD - drawing, no manual modifications allowed

1.Verwendung:  
First Use:

Blatt: 1 von 1  
Sheet: of

/	/		Werkstoff/Material	2005	Tag/Date	Name	Zeichnung Nr./Drawing No.	Index
/	/			gezeichnet drawn	14.10.	Schmitt J.		
/	/			geprüft checked	-	-		
/	/			Normgepr. Stand. check	-	-		
/	/	Maßstab/Scale	2:1	Maße in mm/Dimensions are in mm				
/	/	Vol.	mm <sup>3</sup>	Off./Surf.	mm <sup>2</sup>	Ersatz für/Replacement for: -		
/	/		wieland	Type	Benennung/Title			
/	/			8113 S /	LP_GEHAEUSESTIFTLEISTE			
Index	Datum / Blatt Date / Sheet			..G OB GR OF	Rastermaß 5 Farbe: grau / pitch 5 colour: grey PCB header			
Änderung/Revision								