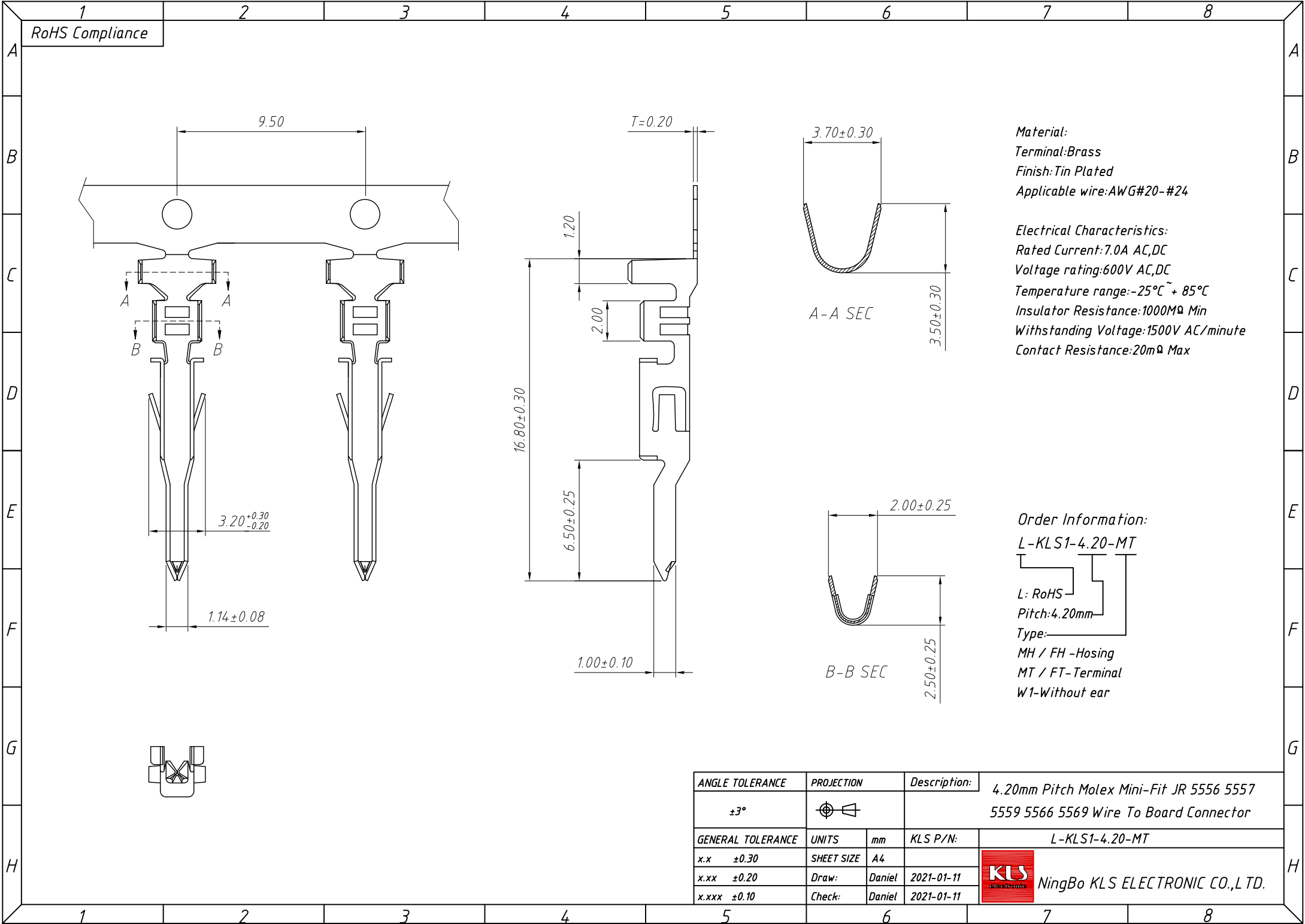
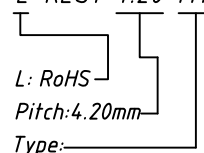


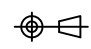
1
RoHS Compliance



Material:
Terminal: Brass
Finish: Tin Plated
Applicable wire: AWG#20-#24

Electrical Characteristics:
Rated Current: 7.0A AC,DC
Voltage rating: 600V AC,DC
Temperature range: -25°C ~ +85°C
Insulator Resistance: 1000MΩ Min
Withstanding Voltage: 1500V AC/minute
Contact Resistance: 20mΩ Max

Order Information:
L-KLS1-4.20-MT

L: RoHS
Pitch: 4.20mm
Type:
MH / FH -Hosing
MT / FT-Terminal
W1-Without ear

ANGLE TOLERANCE	PROJECTION	Description:	4.20mm Pitch Molex Mini-Fit JR 5556 5557 5559 5566 5569 Wire To Board Connector
±3°			
GENERAL TOLERANCE	UNITS	mm	KLS P/N: L-KLS1-4.20-MT
x.x ±0.30	SHEET SIZE	A4	
x.xx ±0.20	Draw:	Daniel	2021-01-11
x.xxx ±0.10	Check:	Daniel	2021-01-11

 NingBo KLS ELECTRONIC CO.,L TD.