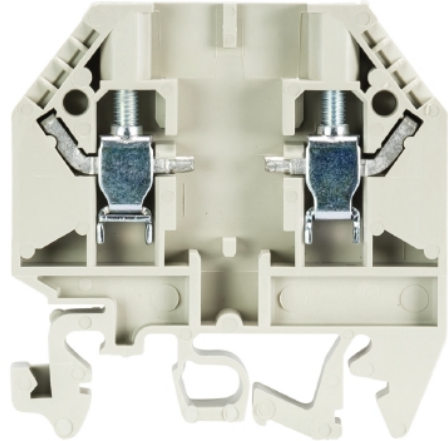


Data sheet

Commercial Art.No.: 57.504.4055.0

Fuse terminal WK 4 TKG/U /V0

Disconnect block for fuse holder, component plug and fuse disconnect lever with screw connection for mounting on TS 35 and TS 32, no minal cross section 4 mm², width 6 mm, color gray



Commercial Art.No.	57.504.4055.0
EAN	4015573527188
Order Unit	100

Certificates / Approvals



Technical data

General

Nominal cross section	4 mm ²
Color	Grey
Number of levels	1
Number of clamp positions per level	2
Width/grid dimension	6 mm
Insulating housing	PA666
Inflammability class of insulation material acc. with UL94	V0
Mounting method	DIN rail (top hat rail)/G-rail
Terminal blocks for electrical installations	No

Technical data

Rated voltage	800 V
Rated impulse voltage	6 kV
Pollution degree	3
Closing plate required	yes
Type of insulation material	Thermoplastic
Length	48 mm

Connection Data

Connection type 1	screw connection
Connection type 2	screw connection
Minimum cross section solid	0.5 mm ²

Maximum cross section solid	6 mm ²
Minimum cross section fine stranded	0.5 mm ²
Maximum cross section fine stranded	4 mm ²
Wire strip length	9 mm
Torque conductor mounting	0.5 Nm

Technical Data UL/CSA

Cross section UL	22-10 AWG
Voltage UL	300 V
Current factory wiring	10 A
Current field wiring	10 A
Cross section CSA	20-10 AWG
Voltage CSA	250 V
Current CSA	6.3 A

Note

Remark to rated current	Note fuse insert
Integrated test socket	No

Classification

ECLASS 11	
ECLASS 8.1	27141126
ETIM 7.0	EC000902
ETIM 6.0	EC000902
ETIM 5.0	EC000902
ETIM 4.0	EC000902
ETIM 3.0	EC000902

Product compliance

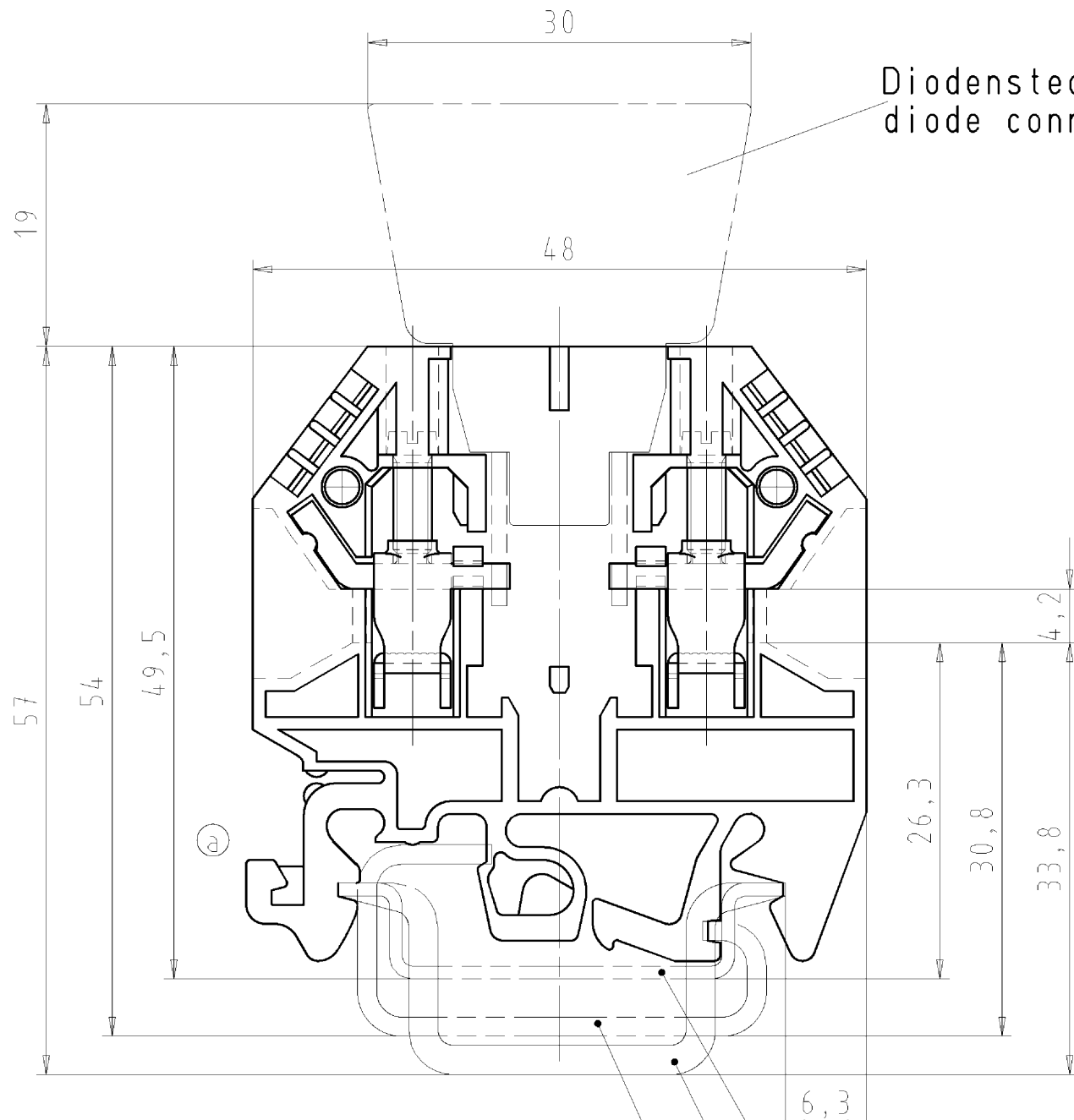
REACH-SVHC conformity status	Compliant
------------------------------	-----------

Accessories

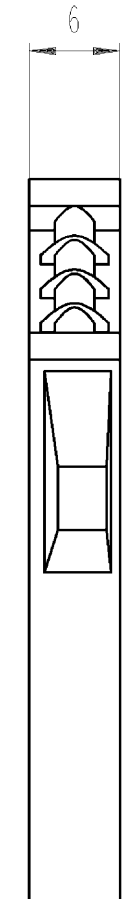
Commercial Art.No.:	Article-type description:	Description:
Z7.255.4227.0	Jumper bar IVB 1 WK4.. - 2	Jumper comp, insulated for DIN rail terminal blocks type WK ..., 2 - pole
Z7.255.4327.0	Jumper bar IVB 1 WK4.. - 3	Jumper comp, insulated for DIN rail terminal blocks type WK ..., 3 - pole
Z7.255.4427.0	Jumper bar IVB 1 WK4.. - 4	Jumper comp, insulated for DIN rail terminal blocks type WK ..., 4 - pole
Z7.255.4527.0	Jumper bar IVB 1 WK4.. - 5	Jumper comp, insulated for DIN rail terminal blocks type WK ..., 5 - pole
Z7.255.4627.0	Jumper bar IVB 1 WK4.. - 6	Jumper comp, insulated for DIN rail terminal blocks type WK ..., 6 - pole
98.190.0000.0	Mounting rail TS 32 UNPERF - l:2000mm	Mounting rail G 32, unslotted, Höhe 5,5 mm, length 2 m, material steel. galv. zinc-plated and dichromated
98.190.1000.0	Mounting rail TS 32 PERF 15mm - l:2000mm	Mounting rail G 32, slotted, Höhe 15 mm, length 2 m, material steel. galv. zinc-plated and dichromated
98.210.0000.0	Mounting rail TS 32 UNPERF AL - l:2000mm	Mounting rail G 32, unslotted, Höhe 15 mm, length 2 m, material Aluminium



98.220.0000.0	Mounting rail TS 32 UNPERF CU - l:2000mm	Mounting rail G 32, unslotted, Höhe 15 mm, length 2 m, material E copper
98.300.0000.0	Mounting rail TS 35x7,5 UNPERF - l:2000mm	Mounting rail TS 35, unslotted, size 7,5 mm, length 2 m, material steel. galv. zinc-plated and dichromated
98.300.1000.0	Mounting rail TS 35x7,5 PERF 15mm - l:2000mm	Mounting rail TS 35, slotted, size 7,5 mm, length 2 m, material steel. galv. zinc-plated and dichromated
98.300.1900.0	Mounting rail TS 35x7,5 PERF 25mm - l:2000mm	Mounting rail TS 35, slotted, size 7,5 mm, length 2 m, material steel. galv. zinc-plated and dichromated
98.360.0000.0	Mounting rail TS 35x15-2,3 UNPERF - l:2000mm	Mounting rail TS 35, unslotted, size 15 mm, length 2 m, material steel. galv. zinc-plated and dichromated
98.360.0004.0	Mounting rail TS 35x15-2,3 UNPERF FZN - l:2000mm	Mounting rail TS 35, unslotted, size 15 mm, length 2 m, material steel, hot galvanized
98.370.0000.0	Mounting rail TS 35x15 UNPERF - l:2000mm	Mounting rail TS 35, unslotted, size 15 mm, length 2 m, material steel. galv. zinc-plated and dichromated
98.370.1000.0	Mounting rail TS 35x15 PERF 15mm - l:2000mm	Mounting rail TS 35, slotted, size 15 mm, length 2 m, material steel. galv. zinc-plated and dichromated
98.380.0000.0	Mounting rail TS 35x15-2,3 UNPERF CU - l:2000mm	Mounting rail TS 35, unslotted, size 15 mm, length 2 m, material E copper
07.311.6155.0	End plate AP 4 TK /V0	End plate for DIN rail terminal blocks type WK 4 TK..., color: grey
07.311.8155.0	Partition TW 4 TK... /V0	Partition for DIN rail terminal blocks type WK 4 TK..., color: grey
07.312.6155.0	Intermediate plate ZP/WK 4 TKG	Intermediate for DIN rail terminal blocks type WK 4 TKG..., color: grey
98.300.1800.0	Mounting rail TS 35x7,5 PERF 18mm - l:2000mm	Mounting rail TS 35, slotted, size 7,5 mm, length 2 m, material steel. galv. zinc-plated and dichromated



Diodenstecker...
diode connector...



Weitere Daten siehe Katalog
further data see catalog

Hutschiene EN 60715-35x7,5
mounting rail EN 60715-35x7,5
Hutschiene EN 60715-35x15
mounting rail EN 60715-35x15
G-Schiene EN 60715-G32
G-rail EN 60715-G32

spezielle Verpackung *
specific package

Teile-Nr.: part-number	Farbe colour	Typ type
57.504.4055.0	grau/grey	WK 4 TKG/U /V0
* 57.504.4095.0	grau/grey	WK 4 TKG/U /V0

Selbstklebeschild:
adhesive label:
Do not disconnect under load.
Ne debrancher pas sous charge.

Tolerierung nach DIN 7167/Tolerance system acc. to DIN 7167.
(This DIN-standard describes the envelope principle. According to the envelope principle the deviations of form and parallelism are limited by the size tolerances).

ja/yes Stoffverbots- und Deklarationsliste nach UU-TQM-05/03 ist einzuhalten.
Conformity with Wieland document UU-TQM-05/03 (list of prohibited / declarable hazardous substances) to be declared!

Freitoleranz nach General tolerance	CAD - Zeichnung, keine manuellen Änderungen CAD - drawing, no manual modifications allowed	1. Verwendung: First Use:	Blatt: 1 von 1 Sheet: of 1																
<table border="1"> <tr> <td>Werkstoff/Material</td> <td>2004</td> <td>Tag/Date</td> <td>Name</td> </tr> <tr> <td></td> <td>gezeichnet drawn</td> <td>05.10.</td> <td>Schmitt</td> </tr> <tr> <td></td> <td>geprüft checked</td> <td>-</td> <td>-</td> </tr> <tr> <td></td> <td>Normgepr. Stand. check</td> <td>-</td> <td>-</td> </tr> </table>		Werkstoff/Material	2004	Tag/Date	Name		gezeichnet drawn	05.10.	Schmitt		geprüft checked	-	-		Normgepr. Stand. check	-	-	Zeichnung Nr./Drawing No. T 57.504.4055.0 01K a	
Werkstoff/Material	2004	Tag/Date	Name																
	gezeichnet drawn	05.10.	Schmitt																
	geprüft checked	-	-																
	Normgepr. Stand. check	-	-																
Maße in mm/Dimensions are in mm																			
Vol. mm ³ Ofl./Surf. mm ²		Ersatz für/Replacement for: -																	
<table border="1"> <tr> <td>a</td> <td>20.06.2011/</td> <td rowspan="2"> wieland Elektrische Verbindungen </td> <td rowspan="2"> TRENNGRUNDKLEMME Disconnect terminal (base) </td> </tr> <tr> <td>Index</td> <td>Datum / Blatt Date / Sheet</td> </tr> </table>		a	20.06.2011/	wieland Elektrische Verbindungen	TRENNGRUNDKLEMME Disconnect terminal (base)	Index	Datum / Blatt Date / Sheet	Type Benennung/Titre											
a	20.06.2011/	wieland Elektrische Verbindungen	TRENNGRUNDKLEMME Disconnect terminal (base)																
Index	Datum / Blatt Date / Sheet																		
Änderung/Revision																			

These dimensions will be especially checked at delivery
Only inspection dimensions
With /E marked dimensions are only valid for internal use

Diese Maße werden bei Abnahme besonders geprüft
Ausschließlich Prüfmaße
Mit /E gekennzeichnete Maße sind nur für interne Zwecke gültig

Weitergabe sowie Vervielfältigung dieses Dokuments, Verwertung und Mitteilung seines Inhalts sind verboten, soweit nicht ausdrücklich gestattet.
The reproduction, distribution and utilization of this document as well as the communication of its contents to others without express authorization is prohibited.

575044055001K_2 CADW2010_Morgen 2011-06-20T14:13:49 1.000