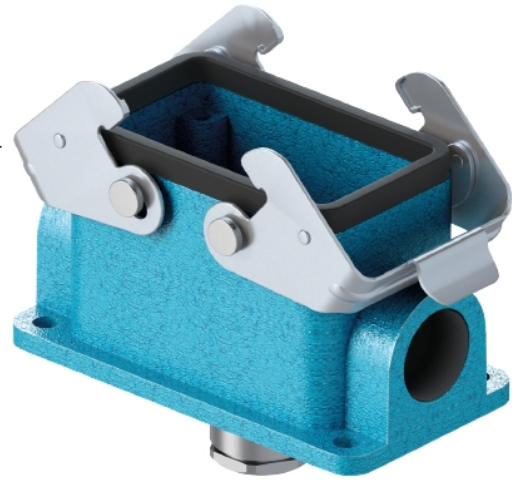


Data sheet

Commercial Art.No.: 70.337.1036.0

Bottom EX GUT GD10 M25 09IA Z0

Bottom-base revos Ex made of zinc, with single locking lever and cable gland M25 on the right and the left side, with protective cover (IP54), low version, 10-polig, explosion-tested version



| | |
|--------------------|---------------|
| Commercial Art.No. | 70.337.1036.0 |
| EAN | 4015573740259 |
| Order Unit | 1 |

Certificates / Approvals



Technical data

General

| | |
|----------------------------------|---------------------|
| Housing material | Die-cast zinc |
| Color | Blue |
| Surface | With powder coating |
| Degree of protection (IP) | IP54 |
| Operating temperature range min. | -20 °C |
| Operating temperature range max. | 60 °C |

Model

| | |
|------------------------|-----------------------|
| Construction | 10 |
| Model of the housing | female |
| Locking mechanism | Double locking levers |
| Cable entry | Below |
| Type of cable | Gland nut |
| With cable screw gland | yes |
| Thread size M | 25 |
| Thread size PG | |
| EMC-version | No |
| Length | 84 mm |
| Width | 52 mm |
| Height | 55 mm |

Classification

| | |
|-----------|--|
| ECLASS 11 | |
|-----------|--|

| | |
|------------|----------|
| ECLASS 8.1 | 27440202 |
| ETIM 7.0 | EC000437 |
| ETIM 6.0 | EC000437 |

Product compliance

| | |
|------------------------------|--------------------|
| ROHS conformity status | Compliant/Exempted |
| ROHS exceptions | III-6(c) |
| REACH-SVHC conformity status | Duty-To-Declare |
| REACH-SVHC substances | Lead |
| REACH-SVHC CAS numbers | 7439-92-1 |