

Connector

Wire To Board Connectors

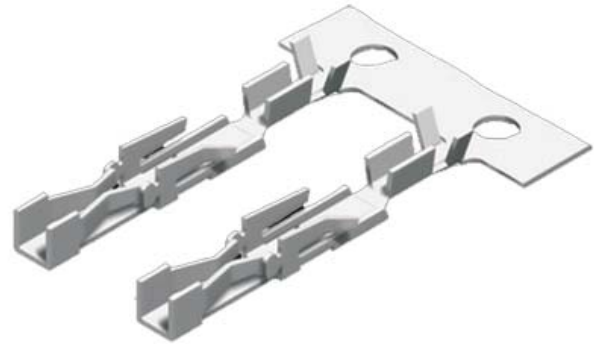
KLS1-TE-2.54 (2.54mm Pitch Wire To Board Connector)

Electrical Characteristics:

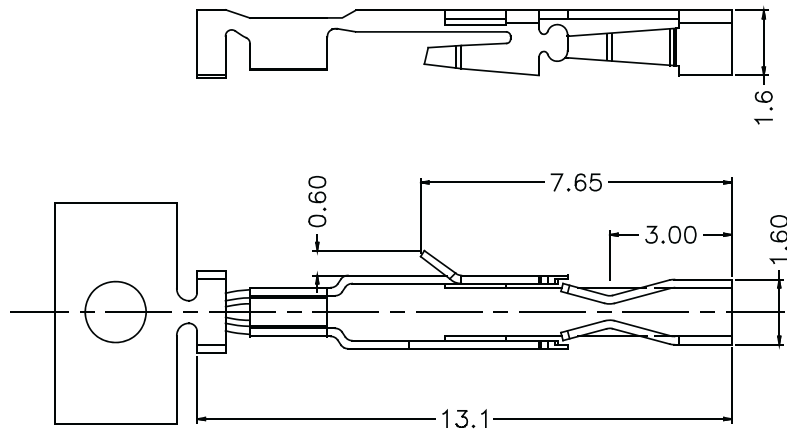
Current Rating: 3A
Voltage Rating: 250V AC DC
Insulator Resistance: 1000MΩ Min.
Contact Resistance: 20mΩ Max.
Withstanding Voltage: AC 1000V for 1 Minute
Operating Temperature: -25°C~+85°C

Material:

Insulator: P.B.T UL94V-0
Contacts: Brass / Tin Plated
Wire Range: #22-#28
Insulation O.D.: 1.50mm(Max)



Terminal



ORDER INFORMATION

Product NO.: **KLS1-TE-2.54-T**

Pos. NO.

Pitch 2.54mm

Type: H=Housing T=Terminal
S=Straight Type R=Right Type

Wire To Board Connectors

KLS1-TE-2.54 (2.54mm Pitch Wire To Board Connector)

Electrical Characteristics:

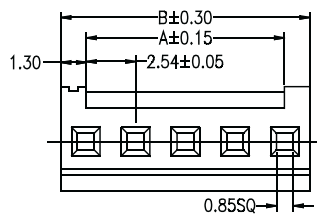
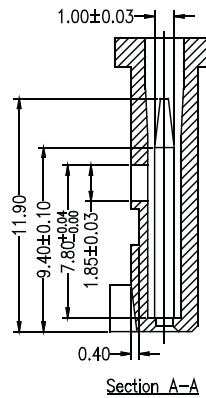
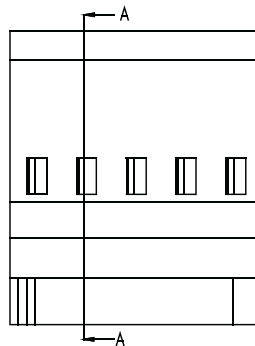
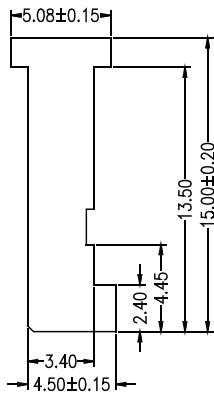
Current Rating: 3A
 Voltage Rating: 250V AC DC
 Insulator Resistance: 1000MΩ Min.
 Contact Resistance: 20mΩ Max.
 Withstanding Voltage: AC 1000V for 1 Minute
 Operating Temperature: -25°C~+85°C

Material:

Insulator: P.B.T UL94V-0
 Contacts: Brass / Tin Plated



Housing



No. of Contacts	Dimensions	
	A	B
2	2.54	5.08
3	5.08	7.62
4	7.62	10.16
5	10.16	12.70
6	12.70	15.24
7	15.24	17.78
8	17.78	20.32
9	20.32	22.86
10	22.86	25.40
12	27.94	30.48
15	35.56	38.10
18	43.18	45.72
20	48.26	50.80

ORDER INFORMATION

Product NO.: KLS1-TE-2.54-1*02-H



Wire To Board Connectors

KLS1-TE-2.54 (2.54mm Pitch Wire To Board Connector)

Electrical Characteristics:

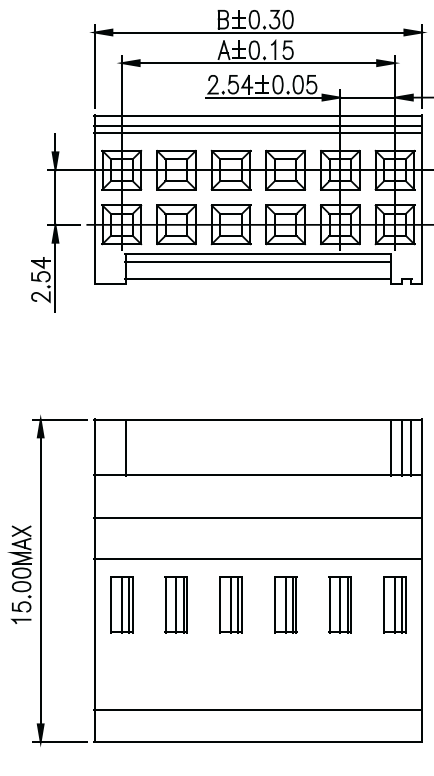
Current Rating: 3A
 Voltage Rating: 250V AC DC
 Insulator Resistance: 1000MΩ Min.
 Contact Resistance: 20mΩ Max.
 Withstanding Voltage: AC 1000V for 1 Minute
 Operating Temperature: -25°C~+85°C

Material:

Insulator: P.B.T UL94V-0
 Contacts: Brass / Tin Plated



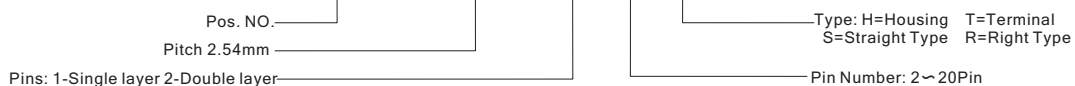
Housing



No. of Contacts	Dimensions	
	A	B
2x2	2.54	5.08
2x3	5.08	7.62
2x4	7.62	10.16
2x5	10.16	12.70
2x6	12.70	15.24
2x7	15.24	17.78
2x8	17.78	20.32
2x9	20.32	22.86
2x10	22.86	25.40
2x11	25.40	27.94
2x12	27.94	30.48
2x13	30.48	33.02
2x14	33.02	35.56
2x15	35.56	38.10
2x16	38.10	40.64
2x17	40.64	43.18
2x18	43.18	45.72
2x19	45.72	48.26
2x20	48.26	50.80

ORDER INFORMATION

Product NO.: KLS1-TE-2.54-2*02-H



Connector

Wire To Board Connectors

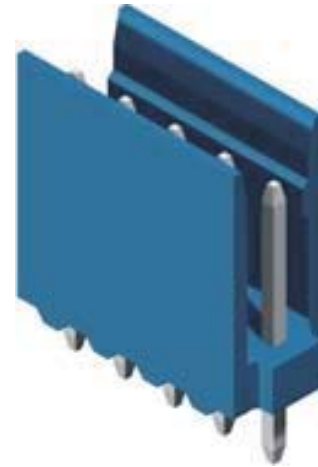
KLS1-TE-2.54 (2.54mm Pitch Wire To Board Connector)

Electrical Characteristics:

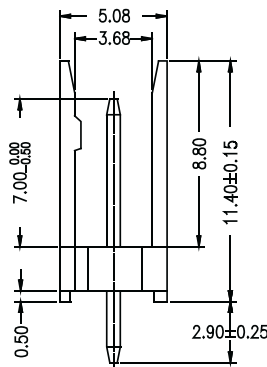
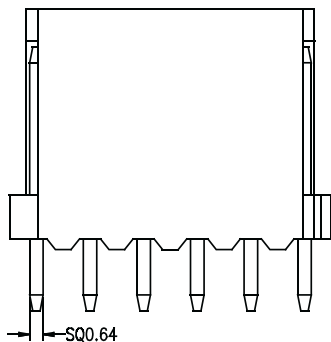
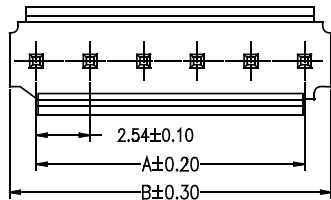
Current Rating: 3A
 Voltage Rating: 250V AC DC
 Insulator Resistance: 1000MΩ Min.
 Contact Resistance: 20mΩ Max.
 Withstanding Voltage: AC 1000V for 1 Minute
 Operating Temperature: -25°C~+85°C

Material:

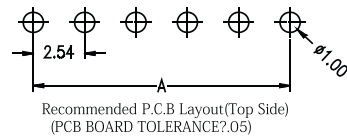
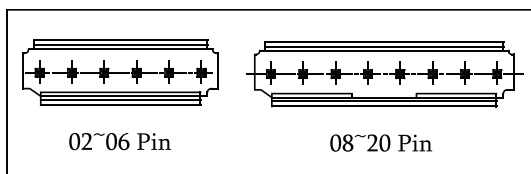
Insulator: P.B.T UL94V-0
 Contacts: Brass / Tin Plated



Straight Type

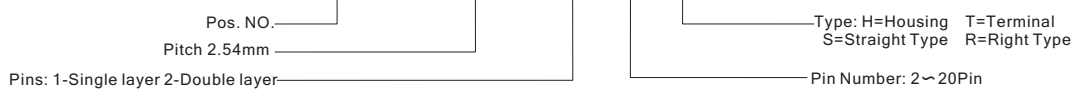


No. of Contacts	Dimensions	
	A	B
2	5.08	2.54
3	7.62	5.08
4	10.16	7.62
5	12.70	10.16
6	15.24	12.70
7	17.78	15.24
8	20.32	17.78
10	25.40	22.86
12	30.48	27.94
13	33.02	30.48
15	38.10	35.56
17	43.18	40.64
18	45.72	43.18
20	50.80	48.26



ORDER INFORMATION

Product NO.: **KLS1-TE-2.54-1*02-S**



Wire To Board Connectors

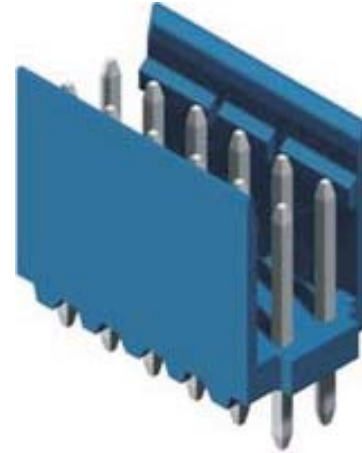
KLS1-TE-2.54 (2.54mm Pitch Wire To Board Connector)

Electrical Characteristics:

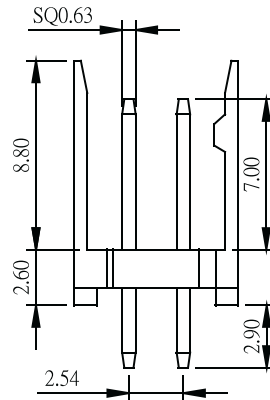
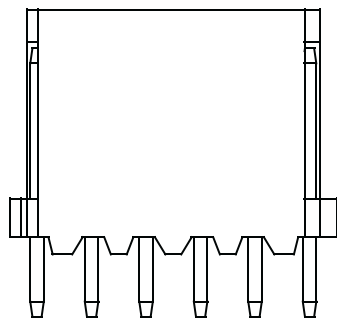
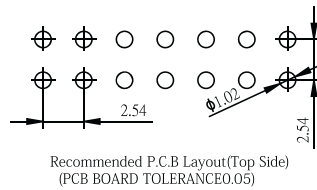
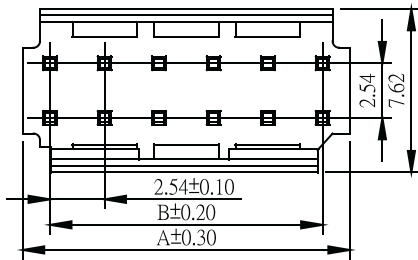
Current Rating: 3A
Voltage Rating: 250V AC DC
Insulator Resistance: 1000MΩ Min.
Contact Resistance: 20mΩ Max.
Withstanding Voltage: AC 1000V for 1 Minute
Operating Temperature: -25°C~+85°C

Material:

Insulator: P.B.T UL94V-0
Contacts: Brass / Tin Plated



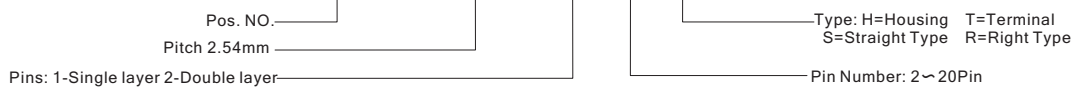
Straight Type



No. of Contacts	Dimensions	
	A	B
2x2	5.08	2.54
2x3	7.62	5.08
2x4	10.16	7.62
2x5	12.70	10.16
2x6	15.24	12.70
2x7	17.78	15.24
2x8	20.32	17.78
2x9	22.86	20.32
2x10	25.40	22.86
2x11	27.94	25.40
2x12	30.48	27.94
2x13	33.02	30.48
2x14	35.56	33.02
2x15	38.10	35.56
2x16	40.64	38.10
2x17	43.18	40.64
2x18	45.72	43.18
2x19	48.26	45.72
2x20	50.80	48.26

ORDER INFORMATION

Product NO.: **KLS1-TE-2.54-2*02-S**



Wire To Board Connectors

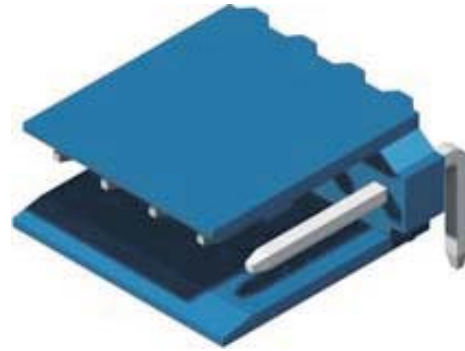
KLS1-TE-2.54 (2.54mm Pitch Wire To Board Connector)

Electrical Characteristics:

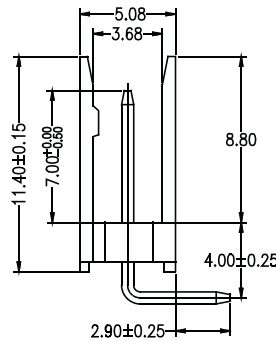
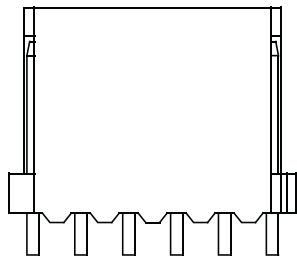
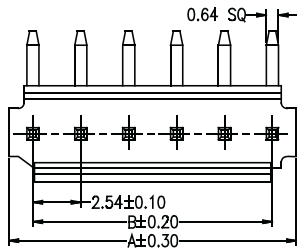
Current Rating: 3A
 Voltage Rating: 250V AC DC
 Insulator Resistance: 1000MΩ Min.
 Contact Resistance: 20mΩ Max.
 Withstanding Voltage: AC 1000V for 1 Minute
 Operating Temperature: -25°C~+85°C

Material:

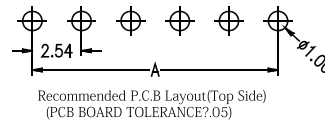
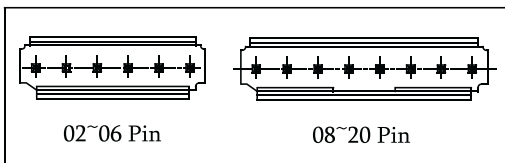
Insulator: P.B.T UL94V-0
 Contacts: Brass / Tin Plated



Right Type



No. of Contacts	Dimensions	
	A	B
2	5.08	2.54
3	7.62	5.08
4	10.16	7.62
5	12.70	10.16
6	15.24	12.70
7	17.78	15.24
8	20.32	17.78
10	25.40	22.86
12	30.48	27.94
13	33.02	30.48
15	38.10	35.56
17	43.18	40.64
18	45.72	43.18
20	50.80	48.26



ORDER INFORMATION

Product NO.: **KLS1-TE-2.54-1*02-R**

Pos. NO. _____ Type: H=Housing T=Terminal
 Pitch 2.54mm _____ S=Straight Type R=Right Type
 Pins: 1-Single layer 2-Double layer _____ Pin Number: 2~20Pin

Connector

Wire To Board Connectors

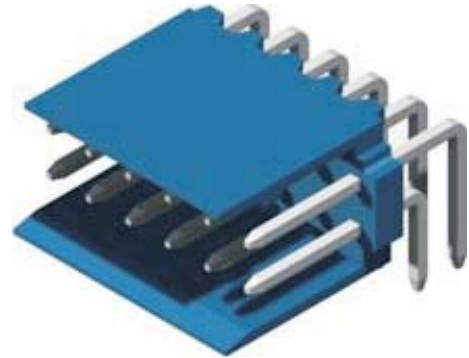
KLS1-TE-2.54 (2.54mm Pitch Wire To Board Connector)

Electrical Characteristics:

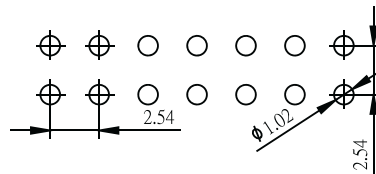
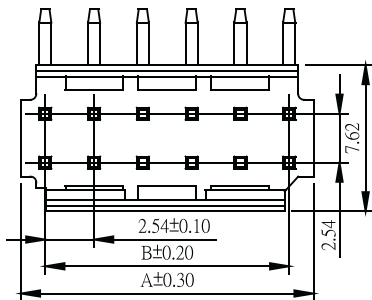
Current Rating: 3A
 Voltage Rating: 250V AC DC
 Insulator Resistance: 1000MΩ Min.
 Contact Resistance: 20mΩ Max.
 Withstanding Voltage: AC 1000V for 1 Minute
 Operating Temperature: -25°C~+85°C

Material:

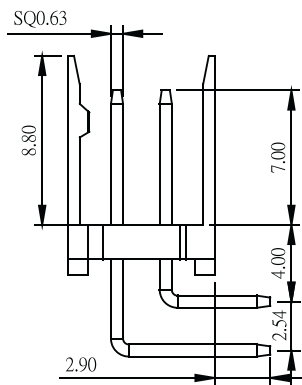
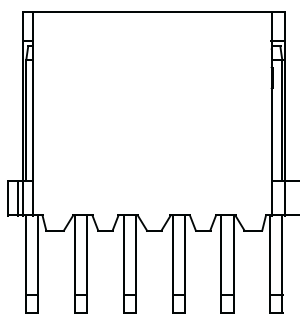
Insulator:P.B.T UL94V-0
 Contacts:Brass / Tin Plated



Right Type



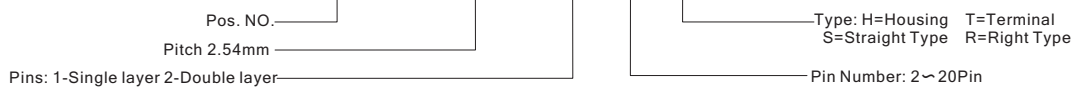
Recommended P.C.B Layout(Top Side)
(PCB BOARD TOLERANCE0.05)



No. of Contacts	Dimensions	
	A	B
2x2	5.08	2.54
2x3	7.62	5.08
2x4	10.16	7.62
2x5	12.70	10.16
2x6	15.24	12.70
2x7	17.78	15.24
2x8	20.32	17.78
2x9	22.86	20.32
2x10	25.40	22.86
2x11	27.94	25.40
2x12	30.48	27.94
2x13	33.02	30.48
2x14	35.56	33.02
2x15	38.10	35.56
2x16	40.64	38.10
2x17	43.18	40.64
2x18	45.72	43.18
2x19	48.26	45.72
2x20	50.80	48.26

ORDER INFORMATION

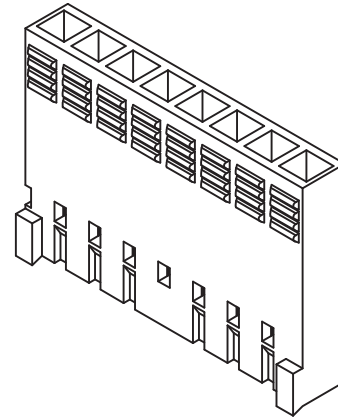
Product NO.: **KLS1-TE-2.54-2*02-R**



Wire To Board Connectors

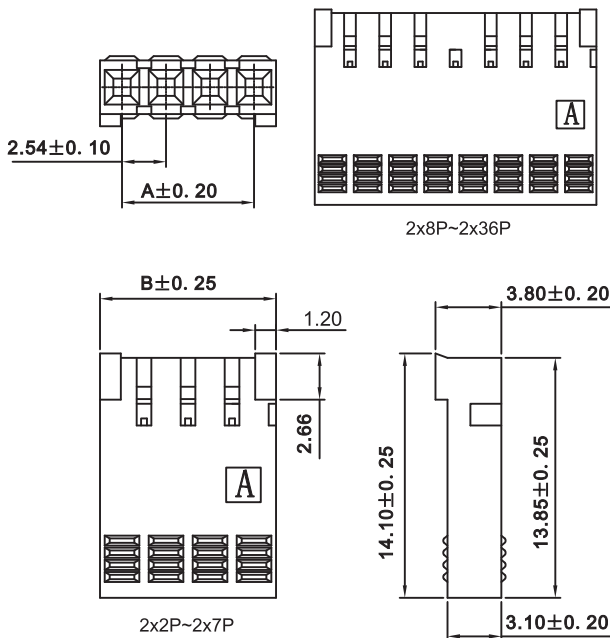
KLS1-TE-2.54-1xN-HK

2.54mm pitch Single Row Housing



Reference Informations:

- *Material:PBT,UL94V-0
- *Suitable KLS1-TE-2.54-1xN-HK
- *Color:Blue



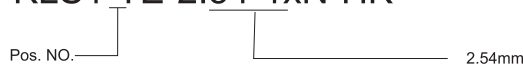
Ordering Information & Dimensions:

PART NO.	Dimensions		PART NO.	Dimensions	
	A	B		A	B
KLS1-TE-2.54-1x2-HK	2.54	5.08	KLS1-TE-2.54-1x20-HK	48.26	50.80
KLS1-TE-2.54-1x3-HK	5.08	7.62	KLS1-TE-2.54-1x21-HK	50.80	53.34
KLS1-TE-2.54-1x4-HK	7.62	10.16	KLS1-TE-2.54-1x22-HK	53.34	55.88
KLS1-TE-2.54-1x5-HK	10.16	12.70	KLS1-TE-2.54-1x23-HK	55.88	58.42
KLS1-TE-2.54-1x6-HK	12.70	15.24	KLS1-TE-2.54-1x24-HK	58.42	60.96
KLS1-TE-2.54-1x7-HK	15.24	17.78	KLS1-TE-2.54-1x25-HK	60.96	63.50
KLS1-TE-2.54-1x8-HK	17.78	20.32	KLS1-TE-2.54-1x26-HK	63.50	66.04
KLS1-TE-2.54-1x9-HK	20.32	22.86	KLS1-TE-2.54-1x27-HK	66.04	68.58
KLS1-TE-2.54-1x10-HK	22.86	25.40	KLS1-TE-2.54-1x28-HK	68.58	71.12
KLS1-TE-2.54-1x11-HK	25.40	27.94	KLS1-TE-2.54-1x29-HK	71.12	73.66
KLS1-TE-2.54-1x12-HK	27.94	30.48	KLS1-TE-2.54-1x30-HK	73.66	76.20
KLS1-TE-2.54-1x13-HK	30.48	33.02	KLS1-TE-2.54-1x31-HK	76.20	78.74
KLS1-TE-2.54-1x14-HK	33.02	35.56	KLS1-TE-2.54-1x32-HK	78.74	81.28
KLS1-TE-2.54-1x15-HK	35.56	38.10	KLS1-TE-2.54-1x33-HK	81.28	83.82
KLS1-TE-2.54-1x16-HK	38.10	40.64	KLS1-TE-2.54-1x34-HK	83.82	86.36
KLS1-TE-2.54-1x17-HK	40.64	43.18	KLS1-TE-2.54-1x35-HK	86.36	88.90
KLS1-TE-2.54-1x18-HK	43.18	45.72	KLS1-TE-2.54-1x36-HK	88.90	91.44
KLS1-TE-2.54-1x19-HK	45.72	48.26			

Unit: mm

ORDER INFORMATION

Product NO.: KLS1-TE-2.54-1xN-HK



Wire To Board Connectors

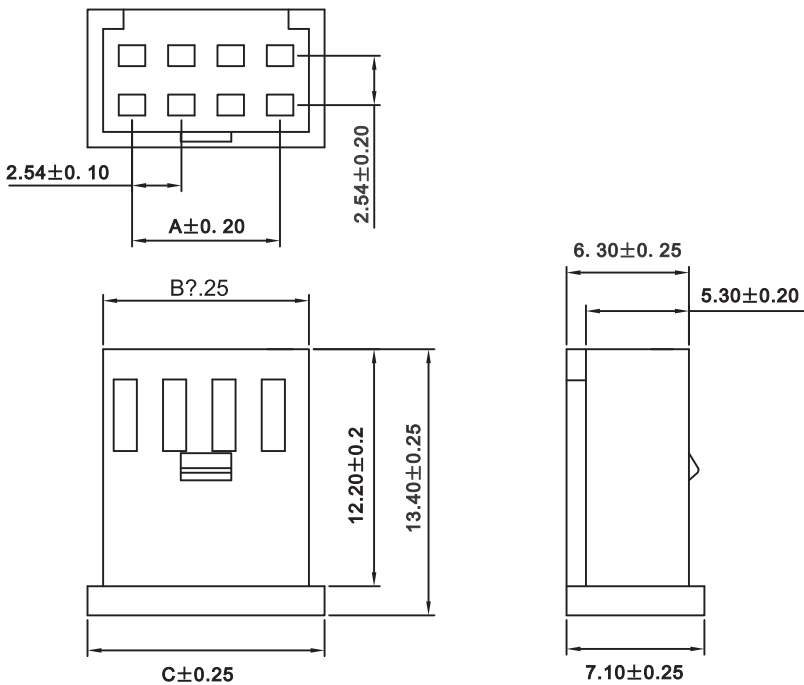
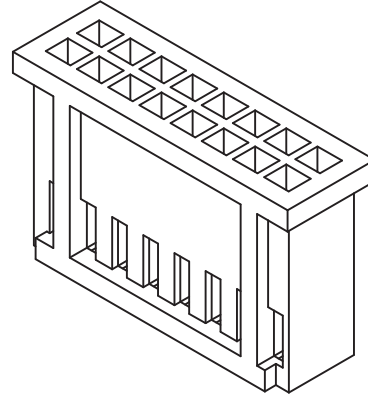
KLS1-TE-2.54-2xN-HK

2.54mm pitch Dual Row Housing



Reference Informations:

- *Material:PBT,UL94V-0
- *Suitable KLS1-TE-2.54-2xN-HK
- *Color:Black



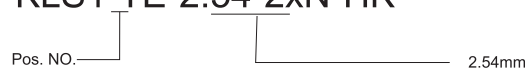
Ordering Information & Dimensions:

PART NO.	Dimensions		
	A	B	C
KLS1-TE-2.54-2x2-HK	2.54	5.60	7.10
KLS1-TE-2.54-2x3-HK	5.08	8.14	9.64
KLS1-TE-2.54-2x4-HK	7.62	10.68	12.18
KLS1-TE-2.54-2x5-HK	10.16	13.22	14.72
KLS1-TE-2.54-2x6-HK	12.70	15.76	17.26
KLS1-TE-2.54-2x7-HK	15.24	18.30	19.80
KLS1-TE-2.54-2x8-HK	17.78	20.84	22.34
KLS1-TE-2.54-2x9-HK	20.32	23.38	24.88
KLS1-TE-2.54-2x10-HK	22.86	25.92	27.42
KLS1-TE-2.54-2x11-HK	25.40	28.46	29.96
KLS1-TE-2.54-2x12-HK	27.94	31.00	32.50
KLS1-TE-2.54-2x13-HK	30.48	33.54	35.04
KLS1-TE-2.54-2x14-HK	33.02	36.08	37.58
KLS1-TE-2.54-2x15-HK	35.56	38.64	40.12
KLS1-TE-2.54-2x16-HK	38.10	41.16	42.66
KLS1-TE-2.54-2x17-HK	40.64	43.70	45.20
KLS1-TE-2.54-2x18-HK	43.18	46.24	47.74
KLS1-TE-2.54-2x19-HK	45.72	48.78	50.28
KLS1-TE-2.54-2x20-HK	48.26	51.32	52.82
KLS1-TE-2.54-2x21-HK	50.80	53.86	55.36
KLS1-TE-2.54-2x22-HK	53.34	56.40	57.90

Unit: mm

ORDER INFORMATION

Product NO.: KLS1-TE-2.54-2xN-HK



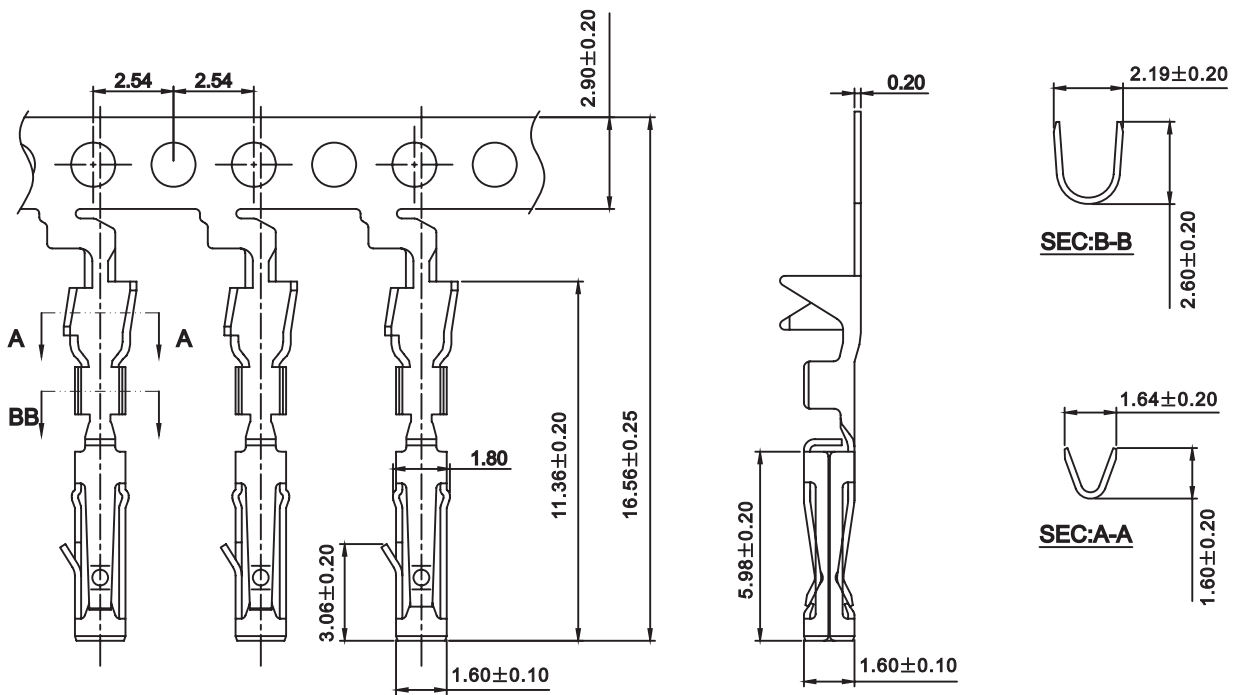
Wire To Board Connectors

KLS1-TE-2.54-TK 2.54mm Pitch Crimp Terminal



Reference Informations:

*Used in KLS1-TE-2.54TK series Housing



ORDER INFORMATION

Product NO.: KLS1-TE-2.54-TK

