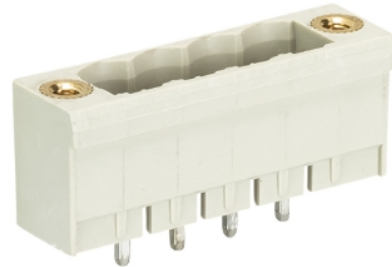


## Data sheet

Commercial Art.No.: 25.338.3253.0

PCB pin header 8113 S / 2 GF OB

PCB pin header, connection method depends on used socket part , 2 poles, pitch: 5 mm, type of packing: carton, color: grey



Commercial Art.No.	25.338.3253.0
EAN	4015573188785
Order Unit	100

Certificates / Approvals



## Technical data

### General

Modular spacing	5 mm
Soldering process	Wave soldering
Packaging	Carton
Number of poles	2
Number of levels	1
Marking	No
Fastening	Flange
Mating direction towards (circuit) board	90°

### Technical data

Rated current	12 A
Overvoltage Category I	1000 V
Overvoltage Category II	400 V
Overvoltage Category III	250 V
Rated impulse voltage	4 kV

### Technical Data UL/CSA

Voltage UL	300 V
Current field wiring	15 A
Current factory wiring	15 A
Voltage CSA	300 V
Current CSA	15 A

### Other

Type of insulation material	Thermoplastic
Color	Grey

Height	12 mm
Length	20 mm
Depth	8.4 mm
Material contact base	CuZn
Material contact surface	Sn

#### Classification

ECLASS 11	
ECLASS 8.1	27440402
ETIM 7.0	EC002637
ETIM 6.0	EC002637
ETIM 5.0	EC002637
ETIM 4.0	EC002637

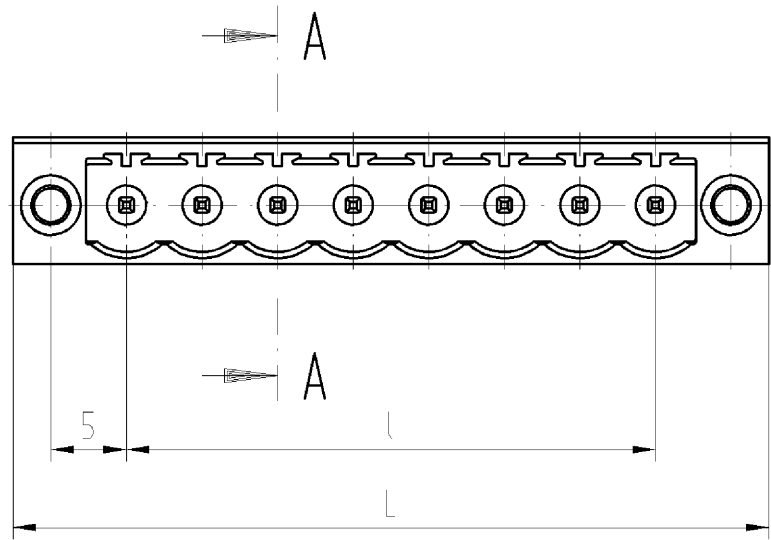
#### Product compliance

ROHS conformity status	Compliant/Exempted
ROHS exceptions	III-6(c)
REACH-SVHC conformity status	Duty-To-Declare
REACH-SVHC substances	Lead
REACH-SVHC CAS numbers	7439-92-1

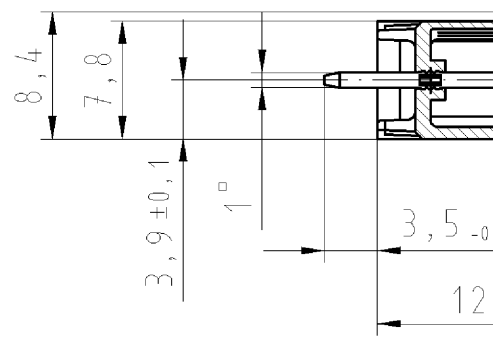
#### Fits with

Commercial Art.No.:	Article-type description:	Description:
25.322.3253.0	PCB connector 8113 B / 2 F OB	PCB female connector with screw connection with rising cage clamp system, 2 poles, max. cross section: 2.5 mm <sup>2</sup> , pitch: 5 mm, type of packing: carton, color: grey
25.322.0253.0	PCB connector 8113 B / 2 F	PCB female connector with screw connection with rising cage clamp system, 2 poles, printed version, max. cross section: 2.5 mm <sup>2</sup> , pitch: 5 mm, type of packing: carton, color: grey
25.821.3253.0	PCB connector 8113 BFK / 2 TOP K F OB	PCB female connector with tension spring connection, 2 poles, max. cross section: 2.5 mm <sup>2</sup> , pitch: 5 mm, type of packing: carton, color: grey
25.821.0253.0	PCB connector 8113 BFK / 2 TOP K F	PCB female connector with tension spring connection, 2 poles, printed version, max. cross section: 2.5 mm <sup>2</sup> , pitch: 5 mm, type of packing: carton, color: grey

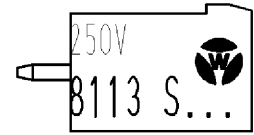
These dimensions will be especially checked at delivery  
 Only inspection dimensions  
 With /E marked dimensions are only valid for internal use



Schnitt A-A  
 section A-A



Weitergabe sowie Vervielfältigung dieser Dokumente, Verbreitung und Mitteilung seines Inhalts sind verboten, soweit nicht ausdrücklich gestattet. Die Reproduktion, Distribution und Nutzung von diesem Dokument als well as the communication of its contents to others without express authorization is prohibited.



Diese Maße werden bei Abnahme besonders geprüft  
 Ausschließlich Prüfmaße  
 Mit /E gekennzeichnete Maße sind nur für interne Zwecke gültig

Art.-Nr. part-no.	Pol-Z. pole	L	l	Typ type
25.338.3253.F	2	20	5	8113 S/ 02 GF OB
25.338.3353.F	3	25	10	8113 S/ 03 GF OB
25.338.3453.F	4	30	15	8113 S/ 04 GF OB
25.338.3553.F	5	35	20	8113 S/ 05 GF OB
25.338.3653.F	6	40	25	8113 S/ 06 GF OB
25.338.3753.F	7	45	30	8113 S/ 07 GF OB
25.338.3853.F	8	50	35	8113 S/ 08 GF OB
25.338.3953.F	9	55	40	8113 S/ 09 GF OB
25.338.4053.F	10	60	45	8113 S/ 10 GF OB
25.338.4153.F	11	65	50	8113 S/ 11 GF OB
25.338.4253.F	12	70	55	8113 S/ 12 GF OB
25.338.4353.F	13	75	60	8113 S/ 13 GF OB
25.338.4453.F	14	80	65	8113 S/ 14 GF OB
25.338.4553.F	15	85	70	8113 S/ 15 GF OB
25.338.4653.F	16	90	75	8113 S/ 16 GF OB
25.338.4753.F	17	95	80	8113 S/ 17 GF OB
25.338.4853.F	18	100	85	8113 S/ 18 GF OB
25.338.4953.F	19	105	90	8113 S/ 19 GF OB
25.338.5053.F	20	110	95	8113 S/ 20 GF OB
25.338.5153.F	21	115	100	8113 S/ 21 GF OB
25.338.5253.F	22	120	105	8113 S/ 22 GF OB

Farbe /colour	.F
grau / grey	.0
schwarz/ black	.1
grün / green	.7

Weitere Daten siehe Katalog  
 further data see catalog

8-polige Ausführung  
 gezeichnet  
 drawn version 8 poles

Tolerierung nach DIN 7167/Tolerance system acc. to DIN 7167.  
 (This DIN-standard describes the envelope principle. According to the envelope principle the deviations of form and parallelism are limited by the size tolerances).

ja/yes  Stoffverbots- und Deklarationsliste nach UU-TQM-05/03 ist einzuhalten.  
 Conformity with Wieland document UU-TQM-05/03 (list of prohibited / declarable hazardous substances) to be declared!

Freitoleranz nach General tolerance

CAD - Zeichnung, keine manuellen Änderungen  
 CAD - drawing, no manual modifications allowed

1.Verwendung: -  
 First Use:

Blatt: 1 von 1  
 Sheet: 1 of 1

Index	Datum / Blatt Date / Sheet	Werkstoff/Material	2005	Tag/Date	Name	Zeichnung Nr./Drawing No.	Index
			gezeichnet drawn	08.12.	Schnitt		
Änderung/Revision	Date / Sheet	Maßstab/Scale 2:1	geprüft checked	-	-	T 25.338.3253.0 01K	Maße in mm/Dimensions are in mm
			Normgepr. Stand. check	-	-		
Vol.		mm <sup>3</sup>	Off./Surf.	mm <sup>2</sup>	Ersatz für/Replacement for: -		
wieland		Type		Benennung/Tittle			
Elektrische Verbindungen		Typ		LP_GEAUSESTIFTLISTE			
		8113 S/.. GF OB		Rastermass: 5 / pitch 5 PCB header			