

Data sheet

Commercial Art.No.: 05.562.6353.0

Blank module male Blindmodul Stecker

Modular connector system blind module male



Commercial Art.No.	05.562.6353.0
EAN	4015573747944
Order Unit	10

Technical data

General

Model	Pin insert
Inflammability class of insulation material acc. with UL94	V0
Color	Grey
Modular version	yes
Operating temperature range min.	-40 °C
Operating temperature range max.	120 °C

Connection Data

Connection type	Other
Number of poles	0
Plus switching contacts	0
Number of pole for rated current 2	0
Number of pole for rated current 3	0
Total number of poles (without ground contact)	0
With wire protection	No
Protective contact	No

Model

With housing	No
--------------	----

Contacts

Contact material	Other
Surface	Other

Technical Data DIN EN 61984

Rated impulse voltage	1.5 kV
-----------------------	--------

Classification

ECLASS 11	
ECLASS 8.1	27440205
ETIM 7.0	EC000438
ETIM 6.0	EC000438
ETIM 5.0	EC000438
ETIM 4.0	EC000438
ETIM 3.0	EC000438

Product compliance

ROHS conformity status	Compliant
REACH-SVHC conformity status	Compliant

A

B

C

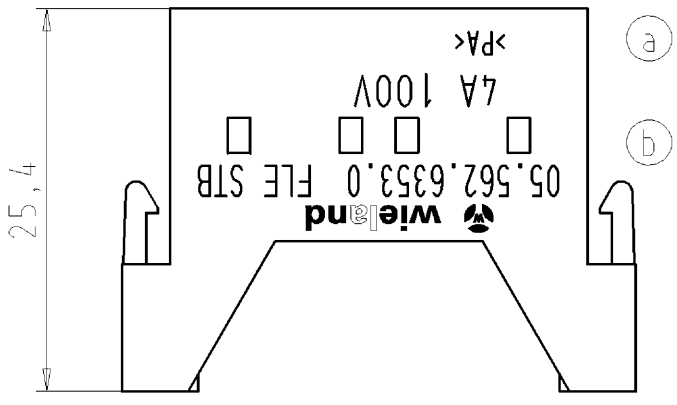
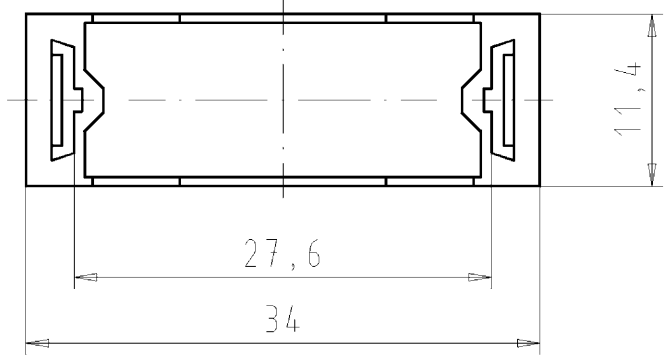
D

E

F

These dimensions will be especially checked at delivery
 Only inspection dimensions
 With /E marked dimensions are only valid for internal use

Diese Maße werden bei Abnahme besonders geprüft
 Ausschließlich Prüfmaße
 Mit /E gekennzeichnete Maße sind nur für interne Zwecke gültig



Weitere Daten siehe Katalog
 further data see catalog

Weitergabe sowie Vervielfältigung dieses Dokuments, Verwertung und Mitteilung seines Inhalts sind verboten, soweit nicht ausdrücklich gestattet. The reproduction, distribution and utilization of this document as well as the communication of its contents to others without express authorization is prohibited.

Tolerierung nach DIN 7167/Tolerance system acc. to DIN 7167. (This DIN-standard describes the envelope principle. According to the envelope principle the deviations of form and parallelism are limited by the size tolerances). ja/yes Stoffverbots- und Deklarationsliste nach UU-TQM-05/03 ist einzuhalten. Conformity with Wieland document UU-TQM-05/03 (list of prohibited / declarable hazardous substances) to be declared!

Freitoleranz nach General tolerance CAD - Zeichnung, keine manuellen Änderungen CAD - drawing, no manual modifications allowed 1.Verwendung: - First Use: - Blatt: 1 von 1 Sheet: 1 of 1

	/		Werkstoff/Material	2008	Tag/Date	Name	Zeichnung Nr./Drawing No.	Index
	/		Farbe: schwarz colour: black	gezeichnet drawn	30.04.	Schmitt J.		
	/		Maßstab/Scale	geprüft checked	-	-	Maße in mm/Dimensions are in mm	
	/	2:1		Normgepr. Stand. check	-	-		
	/	Vol.	mm ³	Ofl./Surf.	mm ²	Ersatz für/Replacement for: -		
b	08.11.2010/		wieland	Type	Benennung/Title			
a	29.10.2009/			Typ	BL INDMODUL_ST			
Index	Datum / Blatt Date / Sheet			FLE STB	20-polig (verschlossen)/20poles (closed) Blank module male			
Änderung/Revision		Elektrische Verbindungen						