

## Data sheet

Commercial Art.No.: X6.032.2053.0

Device connector RST20i3FXS2 M00V GL

RST20i3 device connector M20with ATEX-authorization, , 3 pole, male, spring clamp connection, modular, application 250V with PE, 20A, coding color light grey, color of housing light grey



Commercial Art.No.	X6.032.2053.0
EAN	4015573989016
Order Unit	1

Certificates / Approvals

**SEV-Ex**

## Technical data

### Classification

ECLASS 11	
ECLASS 8.1	27440602
ETIM 7.0	EC002566
ETIM 6.0	EC002566
ETIM 5.0	EC002566
ETIM 4.0	EC002566

### General

Rated current	20 A
Rated voltage	250 V
Pollution degree	3
Rated impulse voltage	4 kV
Lockable	self-locking (unlocking by tool)
Color of coding/ contact carrier	light grey
Marking of poles	L, N, PE
Color of separate adapter (if present)	light grey
Explosion-tested version	yes

### Model

Model	male
Connection type	spring clamp connection
Connecting thread metric	M20
Angle of plug	straight
Degree of protection (IP)	IP66/68 (3m;2h) /IP69

Thickness of housings (electrical device) 2	0.5 mm
Thickness of housings (electrical device)	8 mm

#### Material

Housing material	Polyamide
halogen free	yes
Contact material	CuZn
Fire load	0.188 kWh
Insulation components continuous temperature	100 °C
Surface finish	Silver-plated

#### Connection Data

Connection cross section solid mm <sup>2</sup> max.	2.5 mm <sup>2</sup>
Connection cross section solid mm <sup>2</sup> min.	1.5 mm <sup>2</sup>
Connection cross section fine stranded mm <sup>2</sup> min.	1.5 mm <sup>2</sup>
Terminations per pole	2
Wire strip length	14.5 mm

#### Dimensions

Length	65.3 mm
Width	35 mm
Height	35 mm

#### Note

Note	Fine stranded and stranded conductors require cable end sleeve; Positioning realised with flattened thread
------	---

#### Product compliance

ROHS conformity status	Compliant/Exempted
ROHS exceptions	III-6(c)
REACH-SVHC conformity status	Duty-To-Declare
REACH-SVHC substances	Lead
REACH-SVHC CAS numbers	7439-92-1

#### Accessories

Commercial Art.No.:	Article-type description:	Description:
06.502.4300.0	screwdriver DIN 5264 A 0,4 X 2,5	Screw driver according to DIN 5264 A, blade: 0.4x2.5 mm, long and straight version
95.101.1300.0	ferrule crimping tool 0,08 - 10 mm <sup>2</sup>	Crimping tool for ferrules, wire strip length: 7-28 mm, nominal cross section: 0,08-10 mm <sup>2</sup> , length of tool: 180 mm
06.600.3627.0	ferrules DIN 46228-E1-12	RST end sleeve, for spring clamp contact, with insulating sleeve, for cross section 1.0 mm <sup>2</sup> /AWG17
06.600.3727.0	ferrules DIN 46228-E0,75-12	RST end sleeve, for spring clamp contact, with insulating sleeve, for cross section 0.75-1.0 mm <sup>2</sup> /AWG17
06.600.3827.0	ferrules DIN 46228-E0,5-10	RST end sleeve, for spring clamp contact, with insulating sleeve, for cross section 0.5 mm <sup>2</sup> /AWG20
06.600.3927.0	ferrules DIN 46228-E1,5-12	RST end sleeve, for spring clamp contact, with insulating sleeve, for cross section 1.5 mm <sup>2</sup> /AWG16

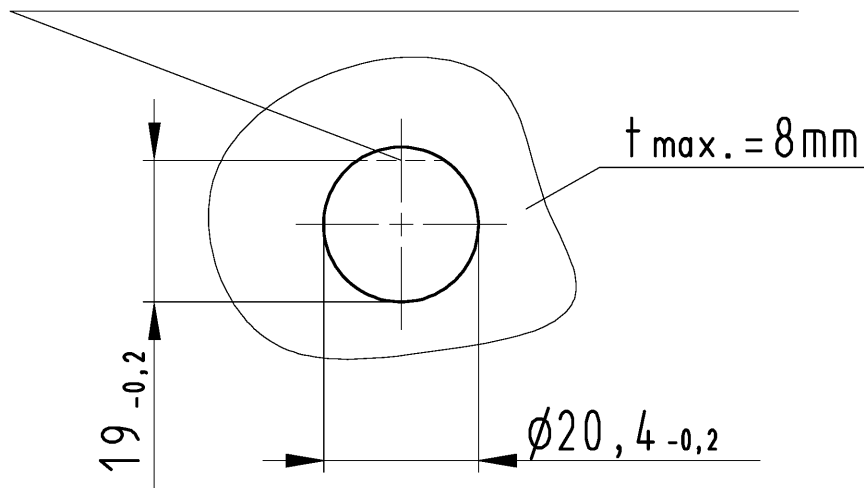
05.564.4453.0	Cover for male connector GL	RST20i3/2 cover piece, for covering unused male connectors, color light grey
99.415.6205.2	Cover for male connector GL	RST20i3/2 cover piece, for covering unused male connectors, with fastening belt, color light grey

### Fits with

Commercial Art.No.:	Article-type description:	Description:
X6.031.0053.0	Connector RST20i3FXB2 ZR1 GL	RST20i3 connector with ATEX-authorization, 3 pole, female, spring clamp connection, application 250V with PE, 20A, for cable diameters 6-10mm, coding color light grey, color of housing light grey
X6.031.0153.0	Connector RST20i3FXB2 ZR2 GL	RST20i3 connector with ATEX-authorization, 3 pole, female, spring clamp connection, application 250V with PE, 20A, for cable diameters 10-14mm, coding color light grey, color of housing light grey

M20 & M16 7°

wahlweise Verdrehsicherung  
optional protection against twisting



**Bitte beachten:**

Gehäusematerial, Wandstärken, Lackierung und  
Entgratung können die Passgenauigkeit beeinflussen.

**Please note:**

Panel material and thickness, deburring and coating thickness  
may influence the cut out dimension.

Tolerierung Size ISO 14405(E)/Tolerance system Size ISO 14405(E).  
(This ISO-standard describes the envelope principle. According to the envelope  
principle the deviations of form and parallelism are limited by the size tolerances).


ja/yes ☒ Stoffverbots- und Deklarationsliste nach WN 5020.010 ist einzuhalten.  
Conformity with Wieland document WN 5020.010 e (list of prohibited /  
declarable hazardous substances) to be declared!

Freitoleranz nach  
General tolerance

CAD - Zeichnung, keine manuellen Änderungen  
CAD - drawing, no manual modifications allowed

1.Verwendung:  
First Use:

Blatt: 1 von 1  
Sheet: 1 of 1

	/		Werkstoff/Material	2015	Tag/Date	Name	Zeichnung Nr./Drawing No.	Index
	/			gezeichnet drawn	11.06.	Dütsch T.		
	/			geprüft checked	-	-		
	/			Normgepr. Stand. check	-	-		
	/	Maßstab/Scale		Maße in mm/Dimensions are in mm				
	/	1:1						
	/	Vol.	mm³	Ofl./Surf.	mm²	Ersatz für/Replacement for: -		
	/			Type	Benennung/Title			
	/			OPENING DIMENSION OEFFNUNGSMASSBILD				
	/			Geräteanschluss / device connectors M20 & M16 7°				
Index	Datum / Blatt Date / Sheet							
Änderung/Revision								