

NOTE:

1. SPECIFICATIONS:

Current rating: 1A AC, DC

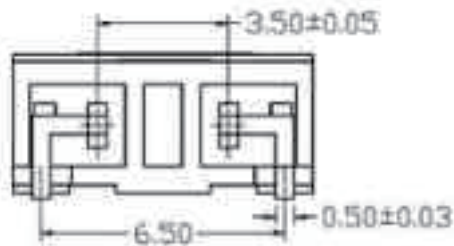
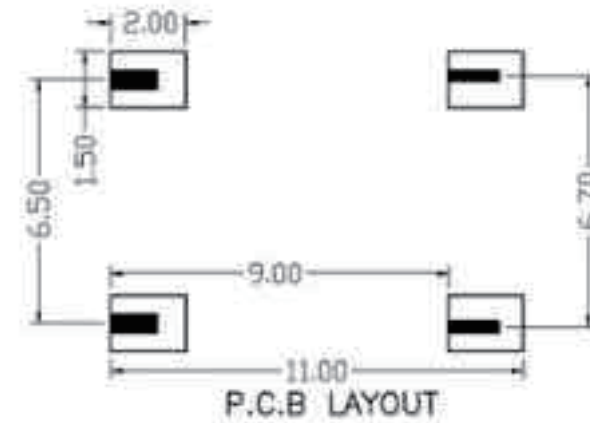
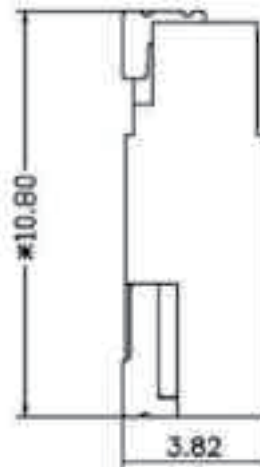
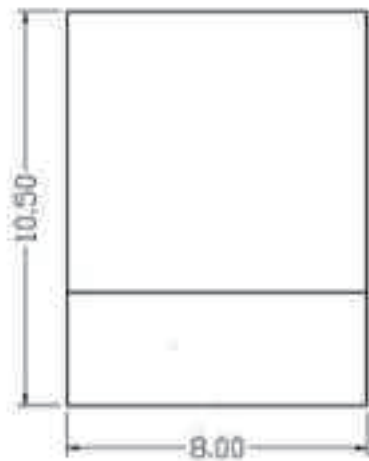
Voltage rating: 1300V AC, DC

Contact Resistance: 20mΩ max

Insulation Resistance: 1000MΩ in

Withstanding Voltage: 3800V AC/minute

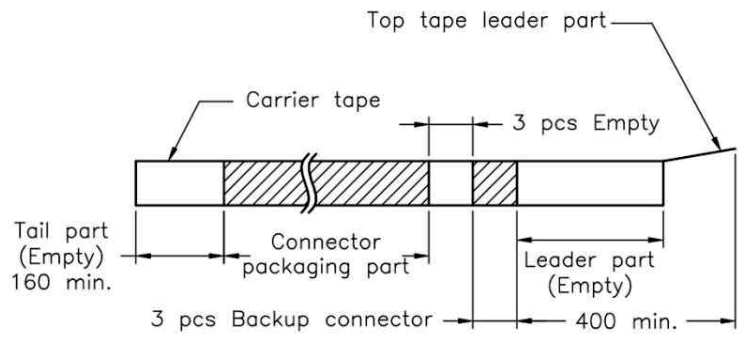
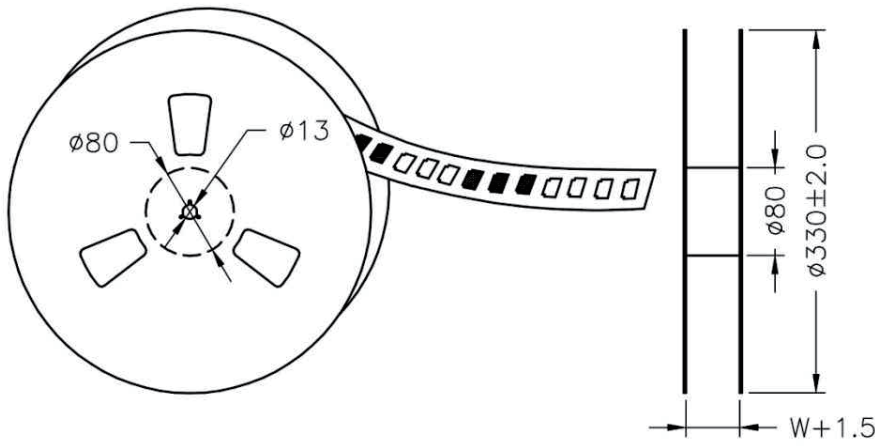
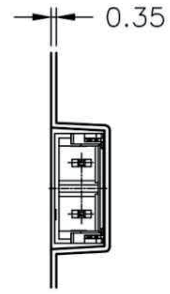
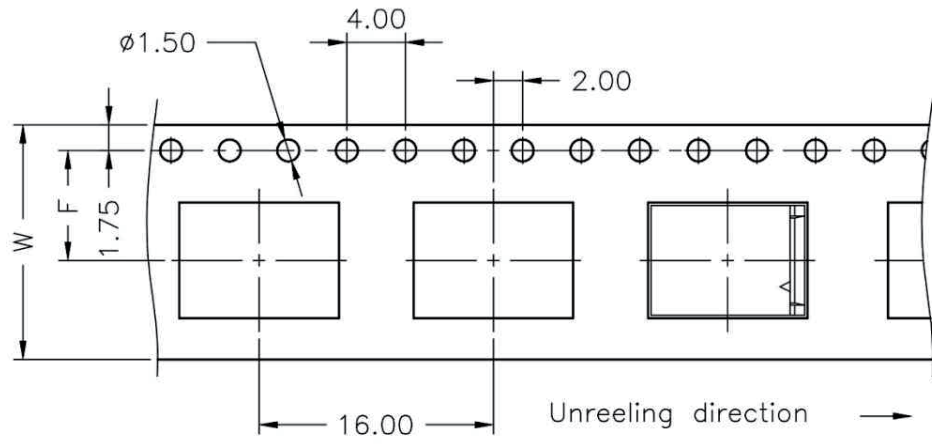
Temperature range: -25°C to +85°C



RoHS Compliant

TOLERANCES ARE

- X.±
- .X±
- .XX±
- .XXX±
- ANG±



Number of Contacts	W±0.3	F±0.1	Q'ty/Reel
02P	16	7.50	1,000

RoHS Compliant

TOLERANCES ARE

MORETHANALL
PCB CONNECTORS
Cable ASSEMBLIES

DRAWING BY CY

CHECKED BY GENIUS

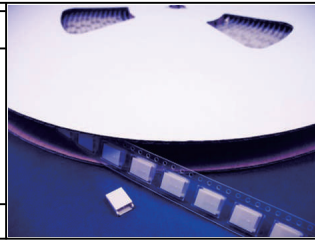
UNIT/mm SCALE 1:1

DATE

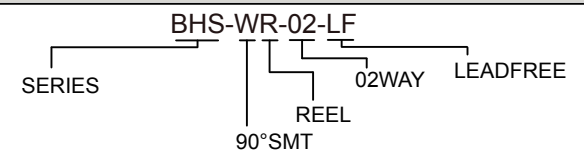
SIZE A4

X.±
.X±
.XX±
.XXX±
ANG±

P PROJECTION



ORDER INFORMATION



煜倫股份有限公司

www.morethanall.com

DESCRIPTION: