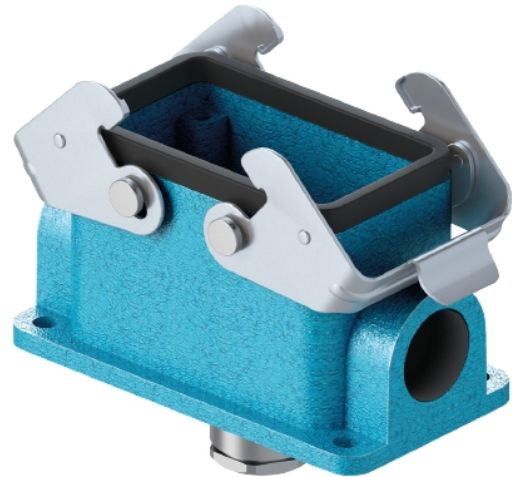


Data sheet

Commercial Art.No.: 70.333.1036.0

Bottom EX GUT GD10 M20 09IA Z0

Bottom-base revos Ex made of zinc, with double locking lever or. screw cap with cable gland M20 on the right side (IP54), low version, 10-polig, explosion-tested version



Commercial Art.No.	70.333.1036.0
EAN	4015573739987
Order Unit	1

Certificates / Approvals



Technical data

General

Housing material	Die-cast zinc
Color	Blue
Surface	With powder coating
Degree of protection (IP)	IP54
Operating temperature range min.	-20 °C
Operating temperature range max.	60 °C

Model

Construction	10
Model of the housing	female
Locking mechanism	Double locking levers
Cable entry	Below
Type of cable	Gland nut
With cable screw gland	yes
Thread size M	20
Thread size PG	
EMC-version	No
Length	84 mm
Width	52 mm
Height	55 mm

Classification

ECLASS 11	
-----------	--

ECLASS 8.1	27440202
ETIM 7.0	EC000437
ETIM 6.0	EC000437

Product compliance

ROHS conformity status	Compliant/Exempted
ROHS exceptions	III-6(c)
REACH-SVHC conformity status	Duty-To-Declare
REACH-SVHC substances	Lead
REACH-SVHC CAS numbers	7439-92-1