

## Data sheet

Commercial Art.No.: 78.116.0253.0

High current module male FLE STS 2 25 1K AG

Modular connector system 2 pole female insert, 1000V/82A, screw connection



Commercial Art.No.	78.116.0253.0
EAN	4015573851375
Order Unit	5

Certificates / Approvals



## Technical data

### General

Model	Pin insert
Inflammability class of insulation material acc. with UL94	V0
Color	black
Mating cycles	100
Pollution degree	3
Modular version	yes
Operating temperature range min.	-40 °C
Operating temperature range max.	120 °C

### Connection Data

Connection type	screw connection
Number of poles	2
Plus switching contacts	0
Number of pole for rated current 2	0
Number of pole for rated current 3	0
Total number of poles (without ground contact)	2
With wire protection	No
Min. conductor diameter rigid (solid/stranded)	10 mm <sup>2</sup>
Max. conductor diameter rigid (solid/stranded)	25 mm <sup>2</sup>
Protective contact	No

### Technical Data UL/CSA

Rated voltage according to UL/CSA	600 V
-----------------------------------	-------

Rated current according UL	82 A
Rated current according CSA	82 A
Min. conductor cross section flexible wire	10 mm <sup>2</sup>
Max. conductor cross section flexible wire	25 mm <sup>2</sup>
Conductor cross section flexible AWG wire	8-4 AWG

**Model**

With housing	No
--------------	----

**Contacts**

Contact material	Copper alloy
Surface	Silver-plated
Contact resistance	≤ 2 mOhm
Wire strip length	15 mm

**Screws head design/recomm. Torque**

Clamping screws	M6/2.5 Nm slot
-----------------	----------------

**Technical Data DIN EN 61984**

Nominal voltage	1000 V
Rated voltage face/ground	1000 V
Nominal current	82 A
Rated impulse voltage	6 kV

**Classification**

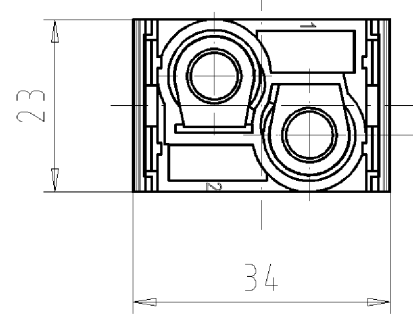
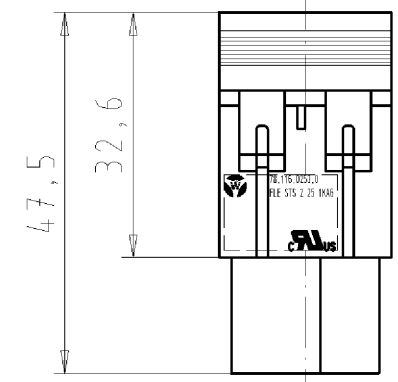
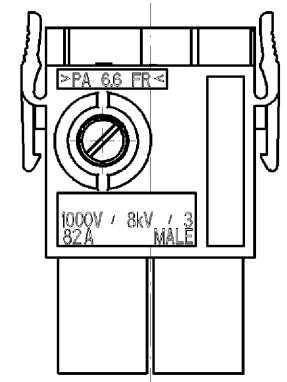
ECLASS 11	
ECLASS 8.1	27440205
ETIM 7.0	EC000438
ETIM 6.0	EC000438
ETIM 5.0	EC000438
ETIM 4.0	EC000438
ETIM 3.0	EC000438

**Product compliance**

ROHS conformity status	Compliant
REACH-SVHC conformity status	Compliant

These dimensions will be especially checked at delivery  
 Only inspection dimensions  
 With /E marked dimensions are only valid for internal use

Diese Maße werden bei Abnahme besonders geprüft  
 Ausschließlich Prüfmaße  
 Mit /E gekennzeichnete Maße sind nur für interne Zwecke gültig



**Technische Daten**  
**Technical Data**

	VDE	CURUS
Bemessungsspannung V rated voltage	1000	600
Bemessungsstrom A rated current	82	82
Anschlußbereich max. mm <sup>2</sup> /AWG connection range	25	8-4
Bemessungsdaten rated data	1000V-82A/8kV/3	
Klemmschraube clamping screw	M 6	
Kontaktbasismaterial contact basis material	CuZn	
Diffusionssperre diffusion barrier	≥2 μm Ni	
Kontaktoberfläche contact surface	≥2 μm Ag	
Isoliermaterial insulating material	PA6.6	
Brennbarkeitsklasse UL 94 V-0 halogenfrei flamability rating UL 94 V-0 halogenfree		
1 Arbeits- und 1 PE-Kontakt 1 make contact and 1 earth contact		

Teile-Nr. part no.	Wieland-Typ	Polzahl n pole n
78.116.0253.0	FLE STS 2 25 1K AG	2

Montageanleitung A 1894.001 beiliegend  
 assembly instruction being attached

Weitere Daten siehe Katalog  
 further data see catalog

Tolerierung nach DIN 7167/Tolerance system acc. to DIN 7167.  
 (This DIN-standard describes the envelope principle. According to the envelope principle the deviations of form and parallelism are limited by the size tolerances).

ja/yes  Stoffverbots- und Deklarationsliste nach UU-TQM-05/03 ist einzuhalten.  
 Conformity with Wieland document UU-TQM-05/03 (list of prohibited / declarable hazardous substances) to be declared!

Freitoleranz nach General tolerance CAD - Zeichnung, keine manuellen Änderungen CAD - drawing, no manual modifications allowed 1.Verwendung: - First Use: - Blatt: 1 von 1 Sheet: of 1

gezeichnet/drawn	2005	Tag/Date	Name	Zeichnung Nr./Drawing No.	Index
geprüft/checked		29.08.	Duetsch		
Normgepr. Stand. check					

Maße in mm/Dimensions are in mm

Werkstoff/Material	2005	Tag/Date	Name	Zeichnung Nr./Drawing No.	Index
Farbe: schwarz colour: black		29.08.	Duetsch		

Maße in mm/Dimensions are in mm

Vol.	mm <sup>3</sup>	Öff./Surf.	mm <sup>2</sup>	Ersatz für/Replacement for: -
------	-----------------	------------	-----------------	-------------------------------

Wieland  
 Elektrische Verbindungen

Type  
 Benennung/Title  
**HOCHSTROMSTIFTMODUL\_2\_POLIG**  
 high current pin module

Änderung/Revision

Weitergabe sowie Vervielfältigung dieses Dokuments, Verwertung und Mitteilung seines Inhalts sind verboten, soweit nicht ausdrücklich gestattet.  
 The reproduction, distribution and utilization of this document as well as the communication of its contents to others without express authorization is prohibited.

781160253001K\_4\_CAD/DWG27.dwg 2005-08-30T15:11:47 1.000