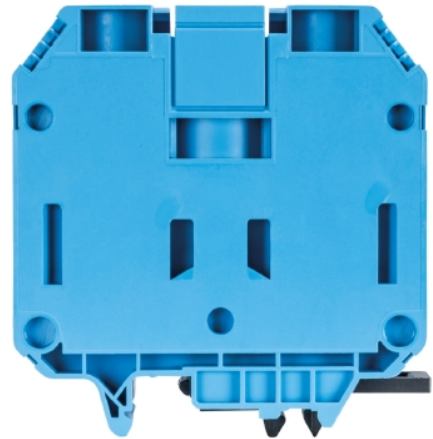


Data sheet

Commercial Art.No.: 57.570.0155.6

Feed-through terminal WKN70 / U BL / V0

Feed-through terminal with Screw connection for mounting on TS 35/ TS 32, nominal cross section: 70 mm², width: 24 mm, color: blue



Commercial Art.No.	57.570.0155.6
EAN	4015573488021
Order Unit	20

Certificates / Approvals



CAN-Ex



ATEX

SEV-Ex



Technical data

General

Nominal cross section	70 mm ²
Color	Blue
Number of levels	1
Number of clamp positions per level	2
Width/grid dimension	24 mm
Insulating housing	PA666
Inflammability class of insulation material acc. with UL94	V0
Explosion-tested version "Ex e"	yes
Mounting method	DIN rail (top hat rail)/G-rail
Terminal blocks for electrical installations	No

Technical data

Rated current	179 A
Rated voltage	800 V
Rated impulse voltage	8 kV
Pollution degree	3
Closing plate required	No
Type of insulation material	Thermoplastic
Length	76.8 mm

Connection Data

Connection type 1	screw connection
-------------------	------------------

Connection type 2	screw connection
Minimum cross section fine stranded	10 mm ²
Maximum cross section fine stranded	70 mm ²
Minimum cross section stranded	16 mm ²
Maximum cross section stranded	95 mm ²
Wire strip length	24 mm
Torque conductor mounting	6 Nm

Technical Data UL/CSA

Cross section UL	6-2/0 AWG
Voltage UL	600 V
Current factory wiring	175 A
Current field wiring	175 A
Cross section CSA	6-2/0 AWG
Voltage CSA	600 V
Current CSA	170 A

Classification

ECLASS 11	
ECLASS 8.1	27141120
ETIM 7.0	EC000897
ETIM 6.0	EC000897
ETIM 5.0	EC000897
ETIM 4.0	EC000897
ETIM 3.0	EC000897

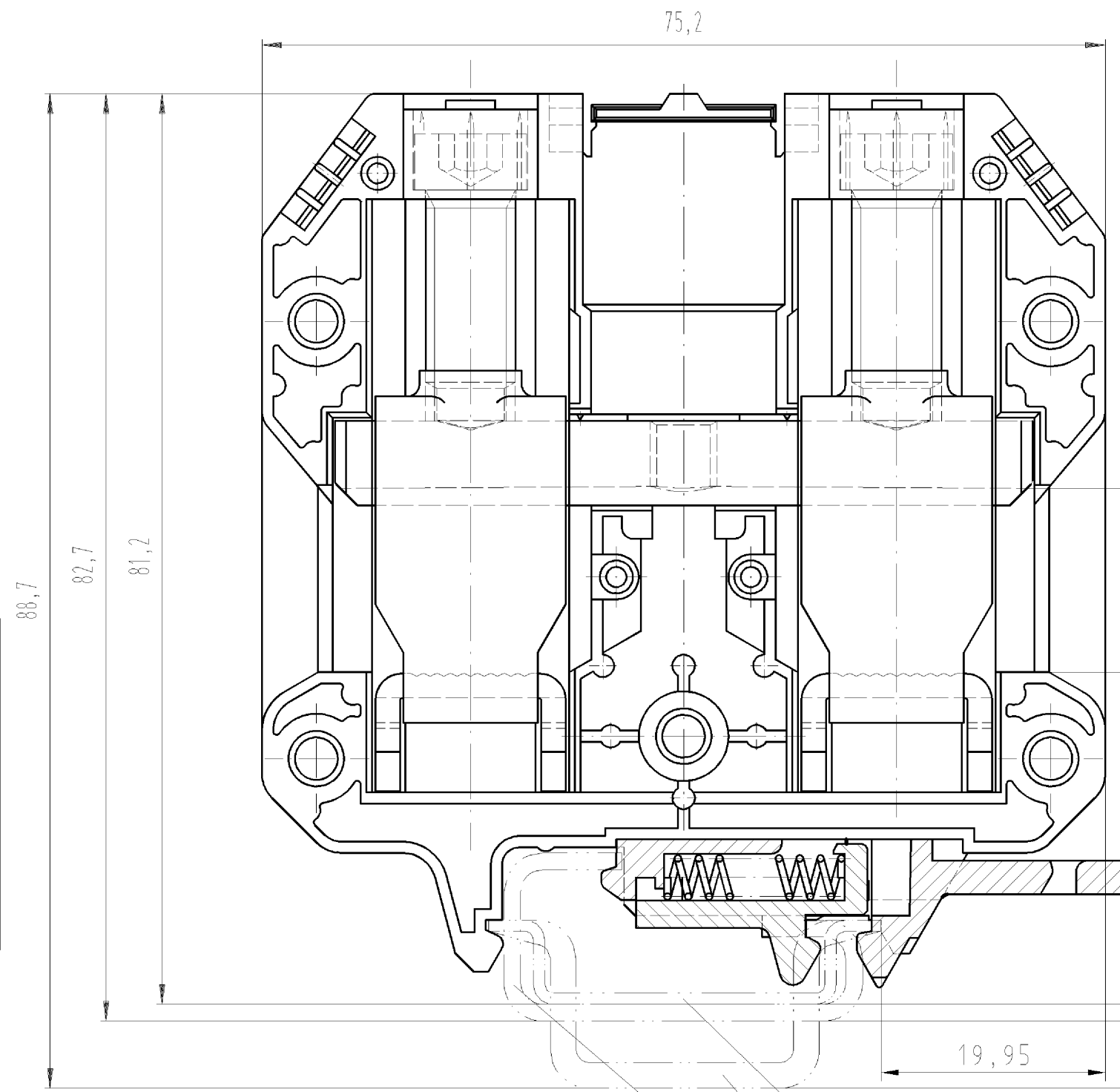
Product compliance

ROHS conformity status	Compliant
REACH-SVHC conformity status	Compliant

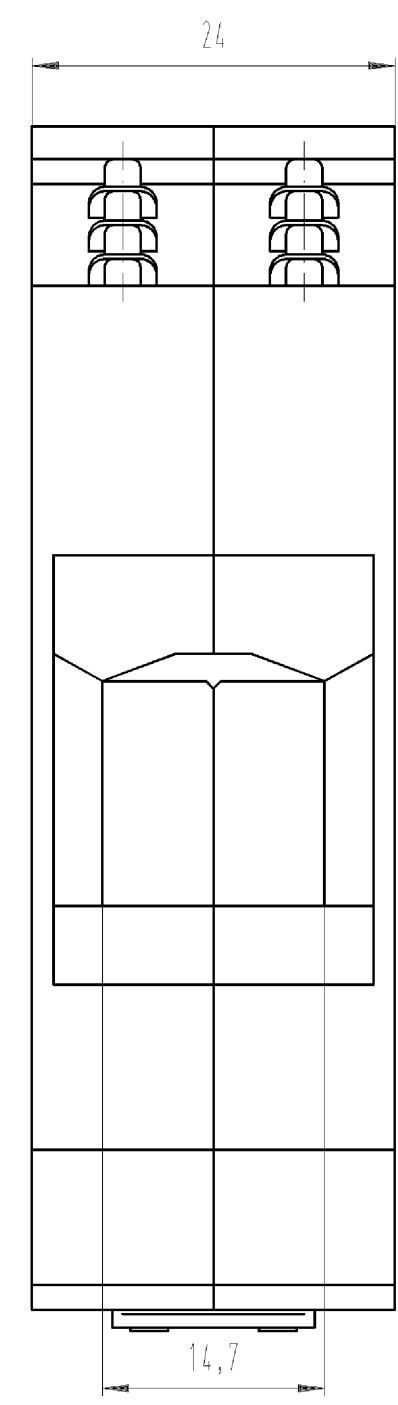
Accessories

Commercial Art.No.:	Article-type description:	Description:
Z7.286.3227.0	Jumper bar VB WKN 70 - 2	Cross connector for DIN rail terminal blocks type WKN ..., 2 -pole
Z7.286.3327.0	Jumper bar VB WKN 70 - 3	Cross connector for DIN rail terminal blocks type WKN ..., 3 -pole
Z7.286.3427.0	Jumper bar VB WKN 70 - 4	Cross connector for DIN rail terminal blocks type WKN ..., 4 -pole
Z7.286.3527.0	Jumper bar VB WKN 70 - 5	Cross connector for DIN rail terminal blocks type WKN ..., 5 -pole
Z7.286.3627.0	Jumper bar VB WKN 70 - 6	Cross connector for DIN rail terminal blocks type WKN ..., 6 -pole
98.300.0000.0	Mounting rail TS 35x7,5 UNPERF - l:2000mm	Mounting rail TS 35, unslotted, size 7,5 mm, length 2 m, material steel. galv. zinc-plated and dichromated
98.370.0000.0	Mounting rail TS 35x15 UNPERF - l:2000mm	Mounting rail TS 35, unslotted, size 15 mm, length 2 m, material steel. galv. zinc-plated and dichromated
98.370.1000.0	Mounting rail TS 35x15 PERF 15mm - l:2000mm	Mounting rail TS 35, slotted, size 15 mm, length 2 m, material steel. galv. zinc-plated and dichromated

○ Diese Maße werden bei Abnahme besonders geprüft
 □ Ausschließlich Prüfmaße
 M1L/A Rekanzeichnete Maße sind nur für interne Zwecke gültig



Vorderansicht im geöffnetem
 Zustand gezeichnet.
 The front view be drawn
 without cover.

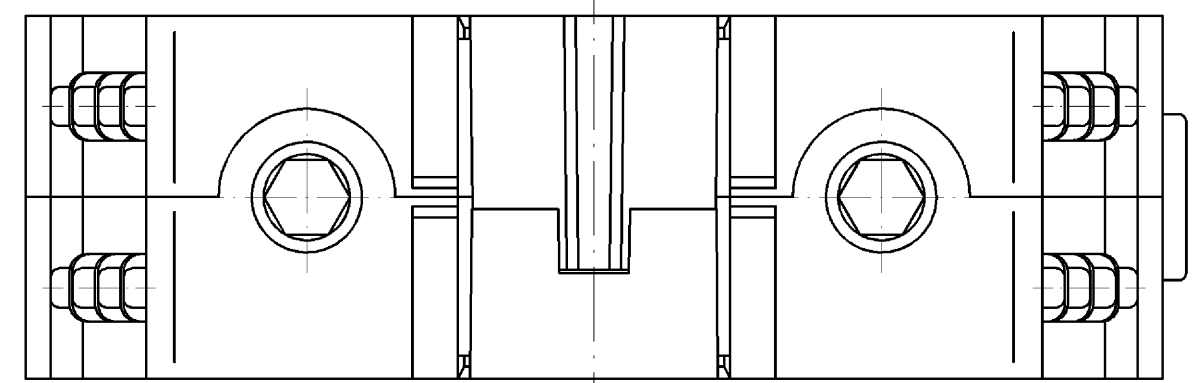


Hutschiene EN 60715-35x7,5
 mounting rail EN 60715-35x7,5
 Hutschiene EN 60715-35x15
 mounting rail EN 60715-35x15
 G-Schiene EN 60715-G32
 G-rail EN 60715-G32

Weitere Daten siehe Katalog
 further data see catalog

* spezielle Verpackung
 specific package

Teile-Nr. Part-number	Farbe colour	Typ type
57.570.0155.0	grau /grey	WKN 70/U /VO
57.570.0155.6	blau /blue	WKN 70/U Blau/VO
* 57.570.0195.0	grau /grey	WKN 70/U /VO
* 57.570.0195.6	blau /blue	WKN 70/U Blau/VO



Freitoleranz nach DIN		CAD - Zeichnung, keine manuellen Änderungen			1. Verwendung: -		Bl.: 1 von 1	
	Maßstab	2004	Tag	Name	Zeichnung Nr.		Index	
	%	Entworfen	23.11.	Schmitt J.	T 57.570.0155.0 01K			
		Geprüft	-	-	Ersatz für: -			
		Normgepr.	-	-	Benennung			
Buchstabe Datum / Blatt		wieland		Elektrische Verbindungen		DURCHGANGSKLEMME		
Änderung						Modular terminal		

Weitergabe sowie Vervielfältigung dieses Dokuments, Verwertung und Mitteilung
 seines Inhalts sind verboten, soweit nicht ausdrücklich gestattet.
 The reproduction, distribution and utilization of this document as well as the
 communication of its contents to others without express authorization is prohibited.

575700155001K_4_CAD/MO28_Schnitt 2004-11-29/T07:38:14 1.000