

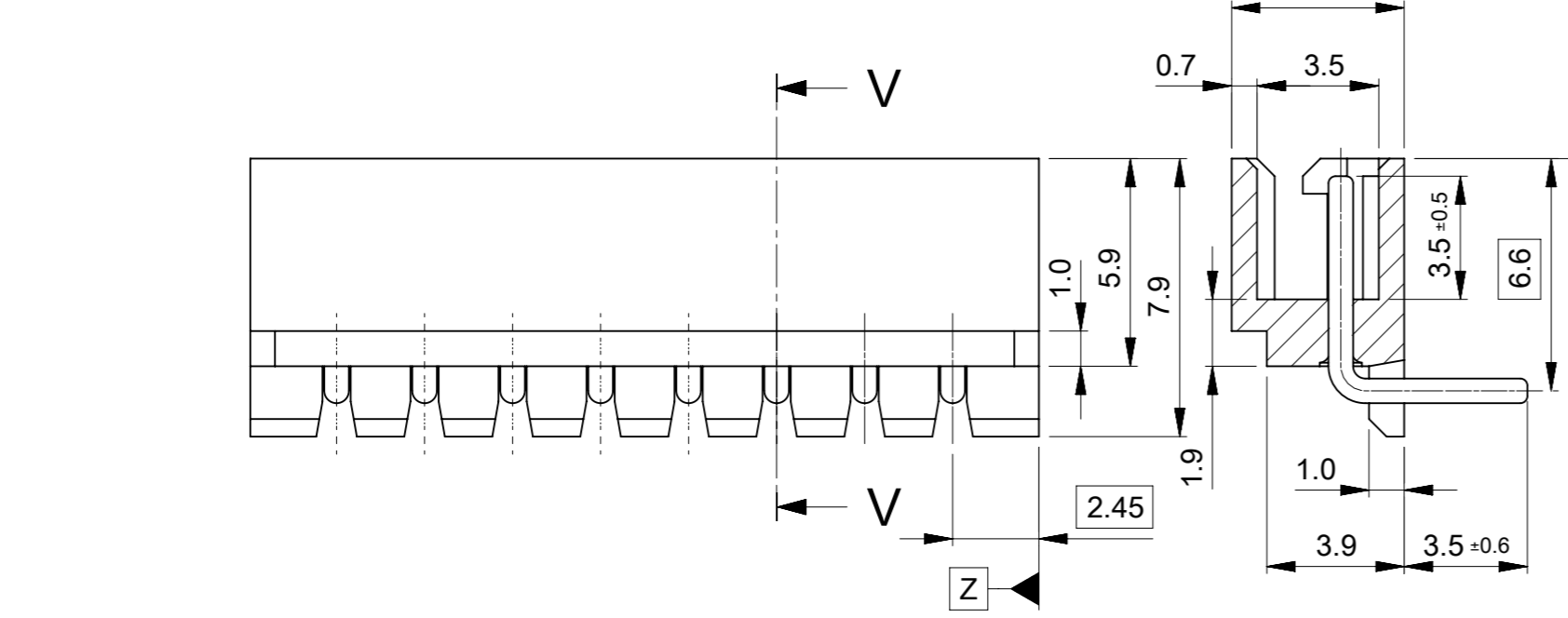
注記：  
NOTES:

① 材質：TABLE 1参照  
MATERIAL：SEE TABLE 1

② 梱包仕様書、製品仕様書、嵌合相手はSHEET 2をご参照ください。  
PLEASE REFER TO SHEET 2 FOR PACKAGING SPECIFICATION, PRODUCT SPECIFICATION AND MATE WITH.

③ 発注番号：ORDER NO.  
22057\*\*5

極数  
CIRCUIT SIZE

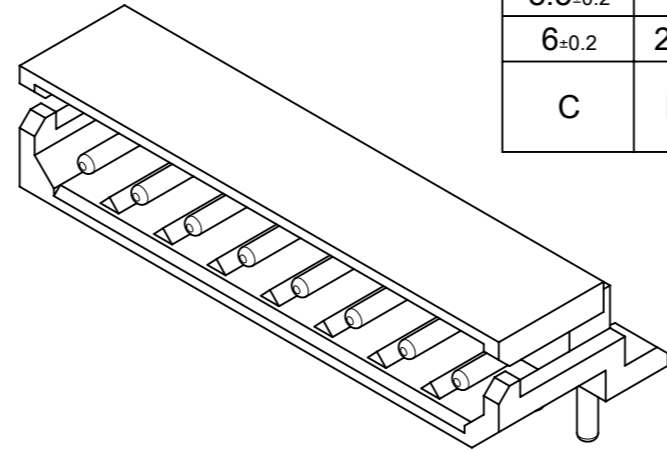


SECTION V-V

38.5±0.3	35	39.9±0.3	ポリ袋 POLY BAG	5268NA	526815A	22057155	15
36±0.3	32.5	37.4±0.3			526814A	22057145	14
33.5±0.3	30	34.9±0.3			526813A	22057135	13
31±0.3	27.5	32.4±0.3			526812A	22057125	12
28.5±0.25	25	29.9±0.25			526811A	22057115	11
26±0.25	22.5	27.4±0.25			526810A	22057105	10
23.5±0.25	20	24.9±0.25			526809A	22057095	9
21±0.25	17.5	22.4±0.25			526808A	22057085	8
18.5±0.25	15	19.9±0.25			526807A	22057075	7
16±0.25	12.5	17.4±0.25			526806A	22057065	6
13.5±0.25	10	14.9±0.25	526805A	22057055	5		
11±0.25	7.5	12.4±0.25	526804A	22057045	4		
8.5±0.2	5	9.9±0.2	526803A	22057035	3		
6±0.2	2.5	7.4±0.2	526802A	22057025	2		
C	B	A	梱包形態 PACKAGING	シリーズ番号 SERIES NO.	ENG. NO.	③ 発注番号 ORDER NO.	極数 CIRCUIT SIZE

① TABLE 1

番号 NO.	部品 PART	材質 MATERIAL	
①	ハウジング HOUSING	ポリアミド(PA), UL94V-0, 色: ナチュラル(白) POLYAMIDE(PA), UL94V-0, COLOR: NATURAL (WHITE)	
②	ピン PIN	母材 BASE METAL	黄銅(Φ0.7) BRASS (Φ0.7)
		めっき PLATING	錫めっき : 3 MICROMETER MIN. TIN
		下地めっき UNDERPLATING	銅めっき : 1 MICROMETER MIN. COPPER (UNDERPLATING)



THIS DRAWING CONTAINS INFORMATION THAT IS PROPRIETARY TO MOLEX ELECTRONIC TECHNOLOGIES, LLC AND SHOULD NOT BE USED WITHOUT WRITTEN PERMISSION

DIMENSION UNITS: mm SCALE: NTS

GENERAL TOLERANCES (UNLESS SPECIFIED):  
ANGULAR TOL ± 3.0°  
4 PLACES ±  
3 PLACES ±  
2 PLACES ± 0.2  
1 PLACE ± 0.2  
0 PLACES ±

DRAFT WHERE APPLICABLE MUST REMAIN WITHIN DIMENSIONS

THIRD ANGLE PROJECTION

DRAWING: A3-SIZE

SERIES: 5268

MATERIAL NUMBER: SEE CHART

CUSTOMER: GENERAL

SHEET NUMBER: 1 OF 2

EC NO: 727270  
DRWN: SOKUMURA01 2022/11/30  
CHK'D: SAKIYAMA 2023/03/09  
APPR: AIDA 2023/03/09

INITIAL REVISION:  
DRWN: ABABU01 2019/06/21  
APPR: KOMURAKAMI 2020/05/13

DOCUMENT NUMBER: 52680001-SD

DOC TYPE: PSD

DOC PART: 000

REVISION: B

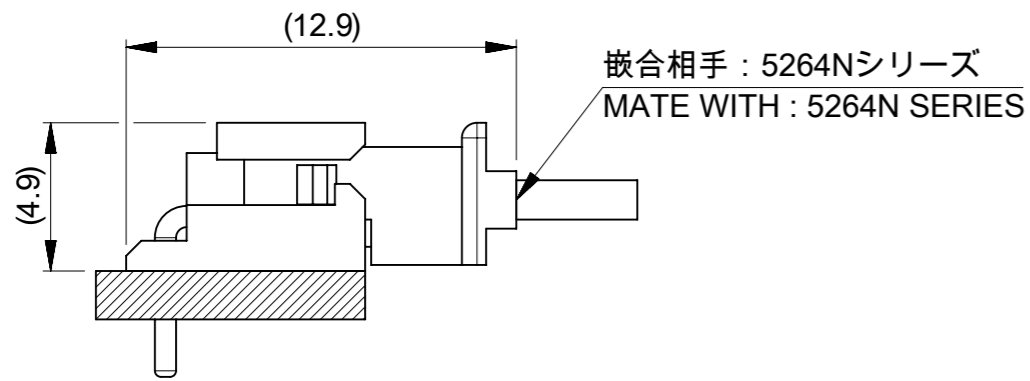
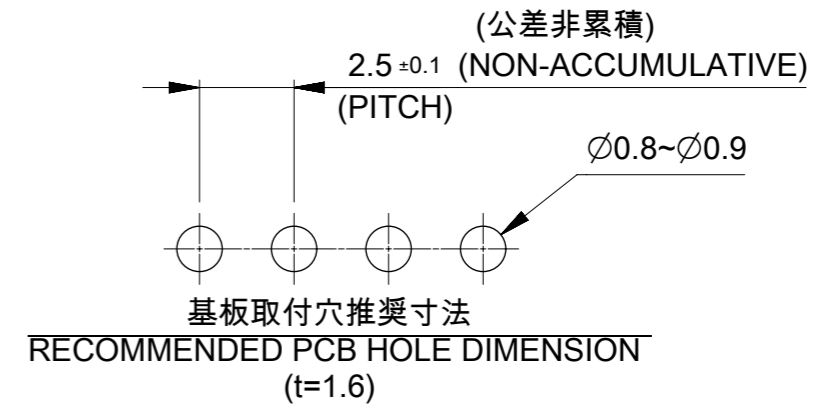
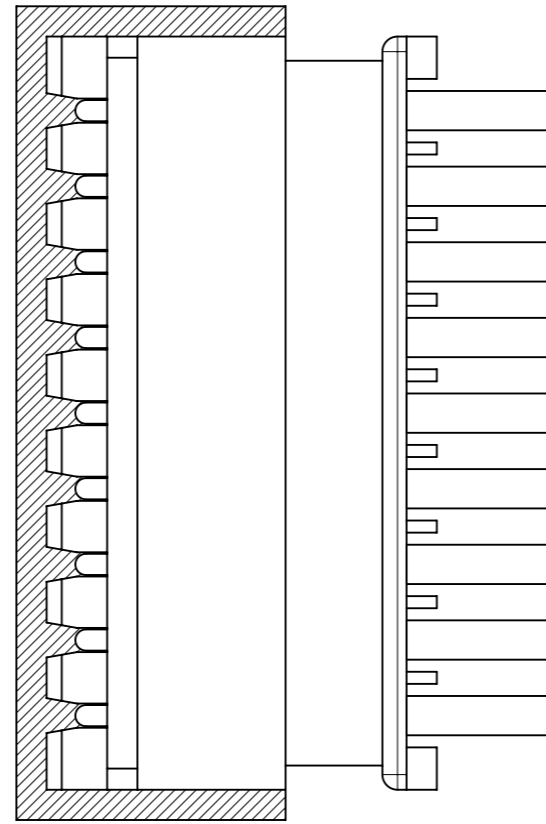
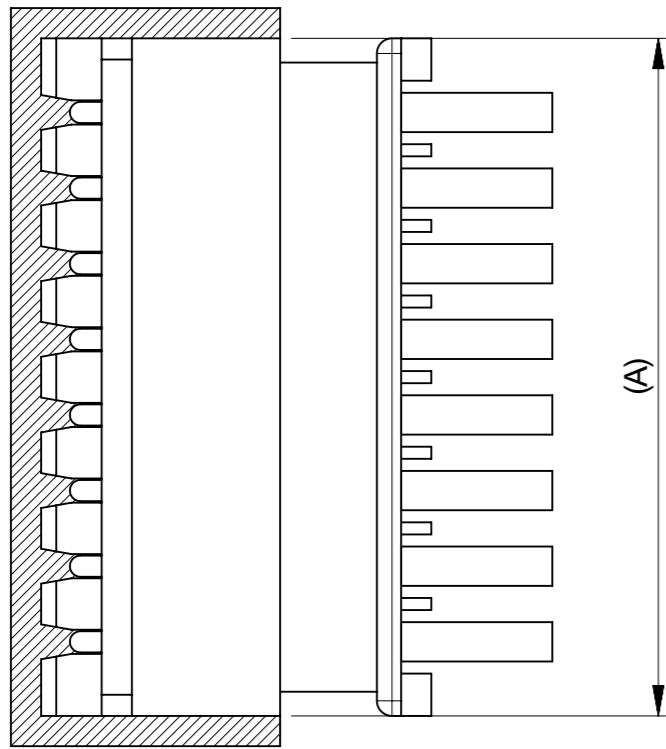
**molex**

MINI-SPOX 2.5 W/B  
RIGHT ANGLE PLUG ASSEMBLY WITHOUT COIN  
COPPER UNDERPLATING

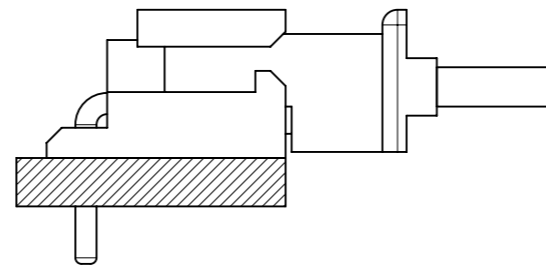
PRODUCT CUSTOMER DRAWING

△ 適用製品及び各種仕様書  
 APPLICABLE PRODUCTS AND VARIOUS SPECIFICATIONS

梱包仕様書 PACKAGING SPECIFICATION	ORDER NO.	SPECIFICATION NO.
	22057**5	SPK-5268-001 PS 001
嵌合相手 MATE WITH	RECEPTACLE HOUSING	
シリーズ番号 SERIES NO.	5264N	
製品仕様書 PRODUCT SPECIFICATION	PS-5264-001 PS 001	



2-8極  
 2-8 CIRCUIT



9-15極  
 9-15 CIRCUIT

嵌合図  
 MATING CONNECTORS

THIS DRAWING CONTAINS INFORMATION THAT IS PROPRIETARY TO MOLEX ELECTRONIC TECHNOLOGIES, LLC AND SHOULD NOT BE USED WITHOUT WRITTEN PERMISSION									
DIMENSION UNITS	SCALE	CURRENT REV DESC:							
mm	NTS	<p><b>molex</b></p> <p>MINI-SPOX 2.5 W/B                  RIGHT ANGLE PLUG ASSEMBLY WITHOUT COIN                  COPPER UNDERPLATING</p> <p>PRODUCT CUSTOMER DRAWING</p> <p>DOCUMENT NUMBER: 52680001-SD   DOC TYPE: PSD   DOC PART: 000   REVISION: B</p> <p>DRAFT WHERE APPLICABLE MUST REMAIN WITHIN DIMENSIONS</p> <p>THIRD ANGLE PROJECTION</p> <p>DRAWING: A3-SIZE   SERIES: 5268   MATERIAL NUMBER: SEE SHEET 1   CUSTOMER: GENERAL   SHEET NUMBER: 2 OF 2</p>							
GENERAL TOLERANCES (UNLESS SPECIFIED)									
ANGULAR TOL	± 3.0 °								
4 PLACES	±								
3 PLACES	±								
2 PLACES	± 0.2								
1 PLACE	± 0.2								
0 PLACES	±								
EC NO: 727270		DRWN: SOKUMURA01		2022/11/30		2023/03/09		2023/03/09	
CHK'D: SAKIYAMA		APPR: AIDA		INITIAL REVISION:		DRWN: ABABU01		2019/06/21	
APPR: KOMURAKAMI		2020/05/13		APPR: KOMURAKAMI		2020/05/13			