

Nu-Link2-Pro

- [Introduction](#)
- [Features](#)
- [Quick Start](#)
- [ETM Settings](#)
- [ICP Tool](#)
- [ISP Tool](#)

I. Environment Settings

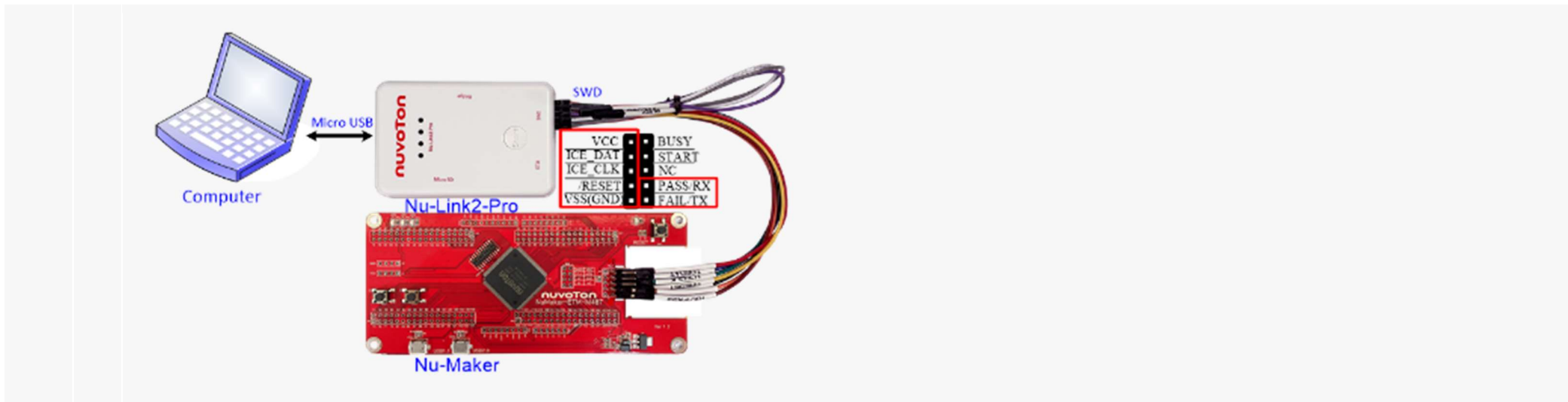
1. Install the preferred toolchain. Please make sure at least one of the toolchains has been installed.
 - [KEIL MDK Nuvoton edition M0/M4/M23](#)
 - [IAR EWARM](#)
 - [NuEclipse \(GCC\)\(Windows\)](#)
 - [NuEclipse \(GCC\)\(Linux\)](#)
2. Download and install the latest Nuvoton Nu-Link Driver. Please install the Nu-Link USB Driver as well at the end of the installation.
 - Download and install [Nu-Link Keil Driver](#) when using Keil MDK
 - Download and install [Nu-Link IAR Driver](#) when using IAR EWARM
 - Skip this step when using NuEclipse
3. Download and unzip the [Board Support Package \(BSP\)](#).
4. Download and install Nuvoton tools

- [ICP Programming Tool](#)
- [ISP Programming Tool](#)

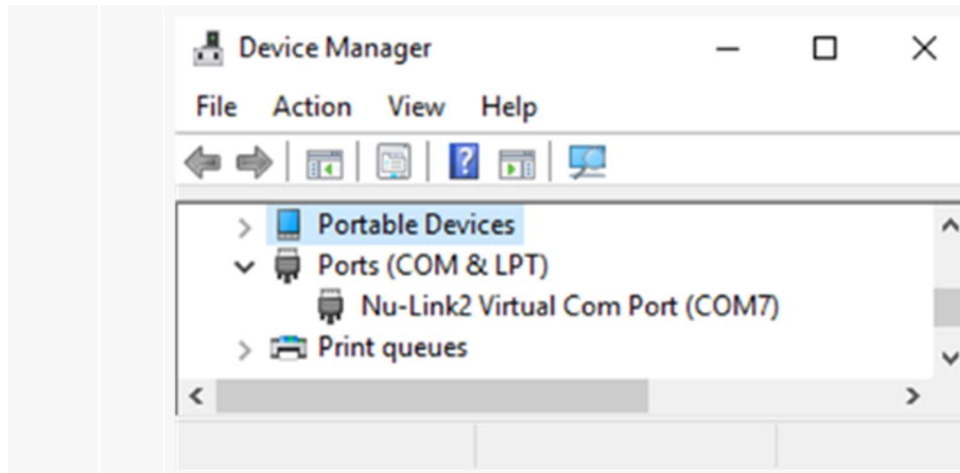
II. Debug Function

1. Hardware Setup

(1) Connect the ICE USB connector to the PC USB port through Micro USB cable.



(2) Find the Nu-Link2 Virtual Com Port at Device Manger. Nu-Link2-Pro can directly use the virtual serial port (VCOM) function without any settings.



2. Use the "Template" project as an example. The project can be found under the BSP folder.

- M480_Series_BSP_CMSIS_V3.XX.XXX

- SampleCode

- Template

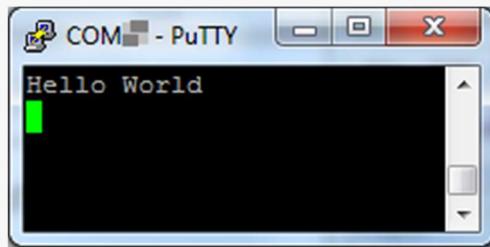
- GCC(Used under NuEclipse (GCC))

- Keil MDK(Used under Keil MDK)

- IAR(Used under IAR EWARM)

3. Open and execute the project under the toolchain. For detailed setting, please refer to the [Nu-Link2-Pro Debugger/ Programmer User Manual](#).

4. User can see the result in the terminal window on PC.



III. Setting and introduction of related tools

1. To use the ETM function, you need to make ETM related settings and then use the ETM to monitor the code, please click the link below for setting.

[ETM Settings](#)

2. For ICP tools for programming, please click the link below for setting.

[NuMicro ICP Programming Tool](#)

3. ISP Online Programming

[NuMicro ISP Programming Tool](#)

Resources

[Nu-Link2-Pro Debugger/ Programmer User Manual](#) | [Microcontrollers](#) | [Software Development Tool](#) | [Driver \(BSP\)](#) | [Programmer](#) | [Nuvoton Official Forum](#) | [Nuvoton eStore](#)