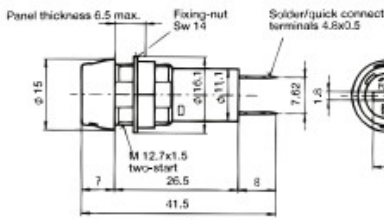




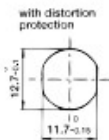
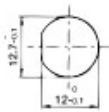
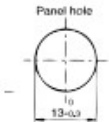
Type



**G-Sicherungshalter für G-Sicherungseinsätze 5 x 20 mm / Fuse-Holders for miniature Fuse-Links 5 x 20 mm**

Bemessungsspannung / rated voltage	AC 250 V
Bemessungsstrom / rated current	10 A (VDE) / 16 A (UL/CSA)
Bemessungsleistung / rated power	2,5 W @ 10 A
Spannungsfestigkeit / dielectric strength	3kV
Schutzart / protection standard	IP 40
Berührungsschutzkategorie / shocksafe category	PC2

Montage / mounting	Frontplatte / front panel
Loch / hole	Ø 13 mm
Verdrehungsschutz / distortion protection	
Gegenmutter / locknut	M12,7 x 1,5
Verschlusskappe / fuse-carrier	Renkverschluss / bayonet cap
Anschlüsse / connections	lötbar / solderable
Approbationen / approvals	VDE, UL rec.



Type **204000**



5 mm Ø - D = 0,65 mm

Type **204001**

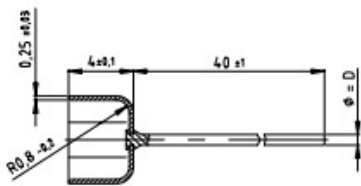


5 mm Ø - D = 0,8mm

Type **204002**



5 mm Ø - D = 1 mm



**Aufsteckkappen für G-Sicherungseinsätze mit 5 mm Kappen-Ø/ Push-on Cap for miniature Fuse-Links with 5 mm cap Ø**

Bemessungsstrom / rated current	204000: max. 6,3A
	204001: max. 10A
	204002: max. 16A

Montage / mounting	Leiterplatte / printed circuit board
Anschlüsse / connections	Axial angeschweisste Drahtenden Drahtenden 40 mm, lötbar / axially welded wire-ends of 40 mm, solderable
Material Kappen / material contact caps	Kupferlegierung vernickelt / copper alloy, nickel plated
Material Drähte / material wire-ends	Kupfer, verzinkt / copper, tinned

