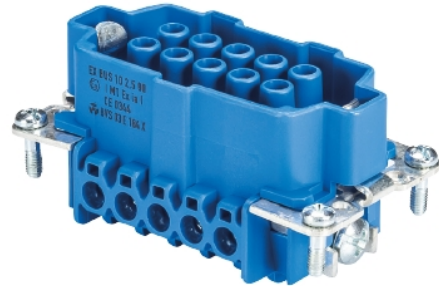


## Data sheet

Commercial Art.No.: 72.300.1053.9

Female insert EX BUS 10 2,5 09IA



Commercial Art.No.	72.300.1053.9
EAN	4015573227064
Order Unit	10

Certificates / Approvals



## Technical data

### General

Explosion-tested version	yes
Model	Female insert
Color	Blue
Mating cycles	200
Pollution degree	3
Operating temperature range min.	-20 °C
Operating temperature range max.	60 °C

### Connection Data

Connection type	screw connection
Number of poles	10

### Technical Data UL/CSA

Min. conductor cross section flexible wire	0.5 mm <sup>2</sup>
Max. conductor cross section flexible wire	2.5 mm <sup>2</sup>

### Contacts

Contact material	Copper alloy
Surface	Tin-plated
Contact resistance	≤ 1.5 mOhm
Wire strip length	7 mm

### Technical Data DIN EN 61984

Nominal voltage	90 V
-----------------	------

### Note

Note	Max. Input current 16A by permitted wire cross section 1.5 till 2.5mm <sup>2</sup> ; Max. Input current 10A by permitted wire cross section 1.0 mm <sup>2</sup> ; Max. Input current 6 A by permitted wire cross section 0.75 mm <sup>2</sup> ; Max. Input current 3 A by permitted wire cross section 0.5 mm <sup>2</sup>
------	---

**Classification**

ECLASS 11	
ECLASS 8.1	27440205
ETIM 7.0	EC000438
ETIM 6.0	EC000438
ETIM 5.0	EC000438
ETIM 4.0	EC000438

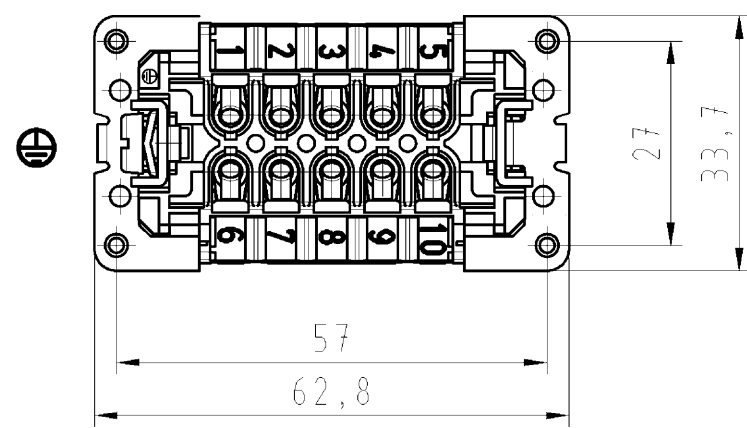
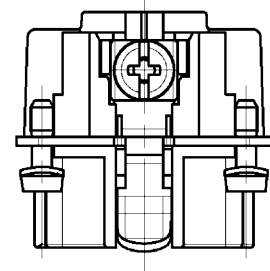
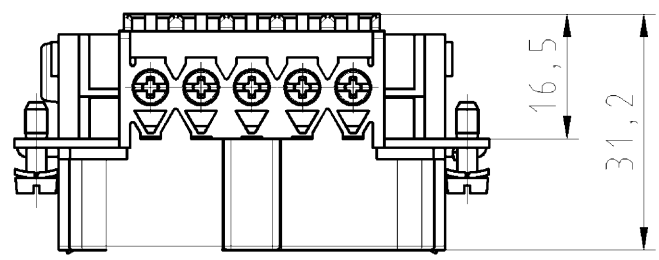
**Product compliance**

ROHS conformity status	Compliant/Exempted
ROHS exceptions	III-6(c)
REACH-SVHC conformity status	Duty-To-Declare
REACH-SVHC substances	Lead
REACH-SVHC CAS numbers	7439-92-1

A  
B  
C  
D  
E  
F

These dimensions will be especially checked at delivery  
Only inspection dimensions  
With /E marked dimensions are only valid for internal use

Diese Maße werden bei Abnahme besonders geprüft  
Ausschließlich Prüfmaße  
Mit /E gekennzeichnete Maße sind nur für interne Zwecke gültig



Weitere Daten siehe Katalog  
further data see catalog

Tolerierung nach DIN 7167/Tolerance system acc. to DIN 7167. (This DIN-standard describes the envelope principle. According to the envelope principle the deviations of form and parallelism are limited by the size tolerances). ja/yes  Stoffverbots- und Deklarationsliste nach UU-TQM-05/03 ist einzuhalten. Conformity with Wieland document UU-TQM-05/03 (list of prohibited / declarable hazardous substances) to be declared!

Freitoleranz nach - General tolerance CAD - Zeichnung, keine manuellen Änderungen CAD - drawing, no manual modifications allowed I.Verwendung: - First Use: - Blatt: 1 von 1 Sheet: 1 of 1

	/		Werkstoff/Material	2013	Tag/Date	Name	Zeichnung Nr./Drawing No.	Index
	/			gezeichnet drawn	05.12.	Schmitt J.		
	/	<b>z</b>		geprüft checked	-	-	Maße in mm/Dimensions are in mm	
	/			Maßstab/Scale	Normgepr. Stand., check	-		
	/	Vol.	mm <sup>3</sup> Oil./Surf.	mm <sup>2</sup>	Ersatz für/Replacement for: -			
	/		<b>wieland</b>	Type	Benennung/Tittle			
	/			Elektrische Verbindungen	EX BUS 10 2,5 091A AU	BUCHSENE INSATZ 6 polig / 6 poles female insert		
Index	Datum / Blatt Date / Sheet							
Änderung/Revision								

Weitergabe sowie Vervielfältigung dieses Dokuments, Verwertung und Mitteilung seines Inhalts sind verboten, soweit nicht ausdrücklich gestattet. The reproduction, distribution and utilization of this document as well as the communication of its contents to others without express authorization is prohibited.

723011053901K\_2 CADW3029 Schmitt 2013-12-09T08:44:40 1.000