



## 特点 Features

- IEC标准插座带开关或保险丝滤波器:  
型号中R:带单保险丝或双保险丝; K:带开关。  
IEC connector filter with fuse or switch.  
R:for one or two fuses K:with switch.
- 体积小  
Space-saving

## 应用 Applications

- 用于小型电子设备和电子测量仪器  
For mini-electronic equipments and electronic measuring instruments

## 技术参数 Technical Data

额定电压 Rated Voltage	250VAC
工作频率 Operating Frequency	50/60Hz
额定电流 Rated Current	1A-10A
耐压试验:(一分钟) Test Voltage (1min)	1500VDC (line/line) 1500VAC (line/ground)
气候类别 Climatic Category	25/085/21

型号 Model	端子方式 Terminal		额定电流 Rated Current (A)	接地电容量 Ground Capacitance (nF)	泄漏电流 Leakage Current ≤(mA)	放电电阻 Discharge Resistance (MΩ)	电路图 Circuit Diagram fig.	外形尺寸 Dimension fig.
	入 Input	出 Output						
DL-1DZ2R	↔	⏏	1	2.2	0.5	1	1	1
DL-3DZ2R	↔	⏏	3	2.2	0.5	1	1	1
DL-6DZ2R	↔	⏏	6	2.2	0.5	1	1	1
DL-10DZ2R	↔	⏏	10	2.2	0.5	1	1	1
DL-1DZ2KR	↔	⏏	1	2.2	0.5	1	2	2
DL-3DZ2KR	↔	⏏	3	2.2	0.5	1	2	2
DL-6DZ2KR	↔	⏏	6	2.2	0.5	1	2	2
DL-10DZ2KR	↔	⏏	10	2.2	0.5	1	2	2
DL-1DZ2KR2	↔	⏏	1	2.2	0.5	1	3	3
DL-3DZ2KR2	↔	⏏	3	2.2	0.5	1	3	3
DL-6DZ2KR2	↔	⏏	6	2.2	0.5	1	3	3
DL-10DZ2KR2	↔	⏏	10	3.3	0.5	1	3	3

## 电原理图 Typical Circuit Diagram

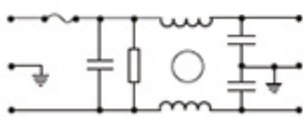


fig.1

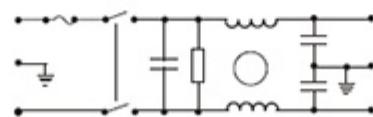


fig.2 (for one fuses)

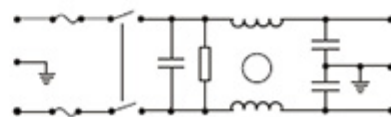
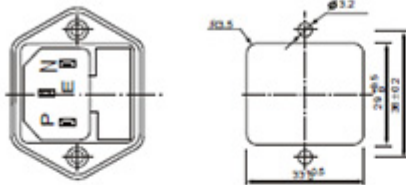
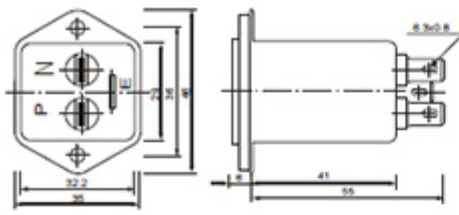


fig.3 (for two fuses)

## 外形尺寸 Outline Drawing and Dimensions (mm)



Panel Cut Out  
fig.1

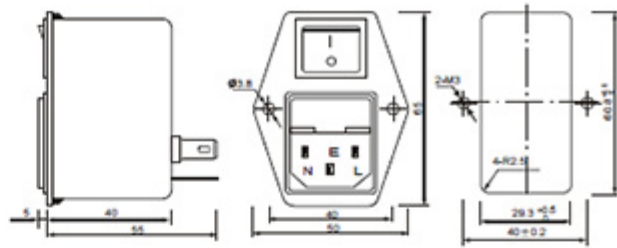


fig.2

Panel Cut Out

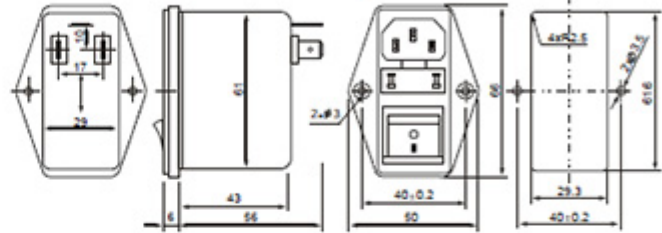


fig.3

## 插入损耗 Insertion Loss in dB

(50 Ω 测量系统, IEC/CISPR No.17 号出版物 Measured in 50 Ω system, as IEC/CISPR No. 17)

