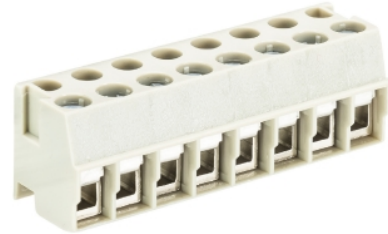


## Data sheet

Commercial Art.No.: 25.600.2653.0

Pluggable PCB Terminal 8142 / 6

Pluggable-PCB terminal with screw connection with wire protection, 6 poles, printed version, max. cross section: 2.5 mm<sup>2</sup>, pitch: 5 mm, type of packing: carton, color: grey



|                    |               |
|--------------------|---------------|
| Commercial Art.No. | 25.600.2653.0 |
| EAN                | 4015573203075 |
| Order Unit         | 50            |

Certificates / Approvals



## Technical data

### General

|                                    |                  |
|------------------------------------|------------------|
| Modular spacing                    | 5 mm             |
| Connection type                    | screw connection |
| Soldering process                  | None             |
| Packaging                          | Carton           |
| Number of poles                    | 6                |
| Marking                            | yes              |
| Mating direction towards connector | 90°              |

### Technical data

|                          |                     |
|--------------------------|---------------------|
| Nominal cross section    | 2.5 mm <sup>2</sup> |
| Rated current            | 8 A                 |
| Overvoltage Category I   | 1000 V              |
| Overvoltage Category II  | 250 V               |
| Overvoltage Category III | 200                 |
| Rated impulse voltage    | 4 kV                |
| Wire strip length        | 5 mm                |

### Connection Data

|                                     |                      |
|-------------------------------------|----------------------|
| Minimum cross section solid         | 0.14 mm <sup>2</sup> |
| Maximum cross section solid         | 4 mm <sup>2</sup>    |
| Minimum cross section fine stranded | 0.14 mm <sup>2</sup> |
| Maximum cross section fine stranded | 2.5 mm <sup>2</sup>  |
| Wire strip length                   | 5 mm                 |

### Technical Data UL/CSA

|                  |           |
|------------------|-----------|
| Cross section UL | 22-12 AWG |
| Voltage UL       | 300 V     |

|                        |           |
|------------------------|-----------|
| Current field wiring   | 15 A      |
| Current factory wiring | 15 A      |
| Cross section CSA      | 22-12 AWG |
| Voltage CSA            | 300 V     |
| Current CSA            | 15 A      |

#### Other

|                             |               |
|-----------------------------|---------------|
| Type of insulation material | Thermoplastic |
| Color                       | Grey          |
| Height                      | 13 mm         |
| Length                      | 30 mm         |
| Depth                       | 11.5 mm       |
| Material attachment screw   | Steel         |
| Material contact base       | CuSn          |
| Material contact surface    | Sn            |

#### Classification

|            |          |
|------------|----------|
| ECLASS 11  |          |
| ECLASS 8.1 | 27440402 |
| ETIM 7.0   | EC002637 |
| ETIM 6.0   | EC002637 |
| ETIM 5.0   | EC002637 |

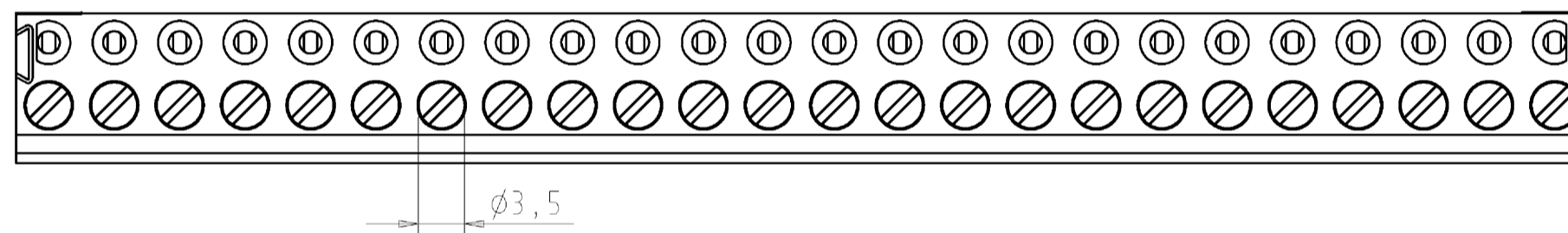
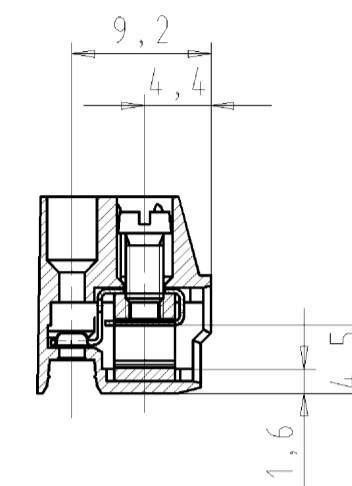
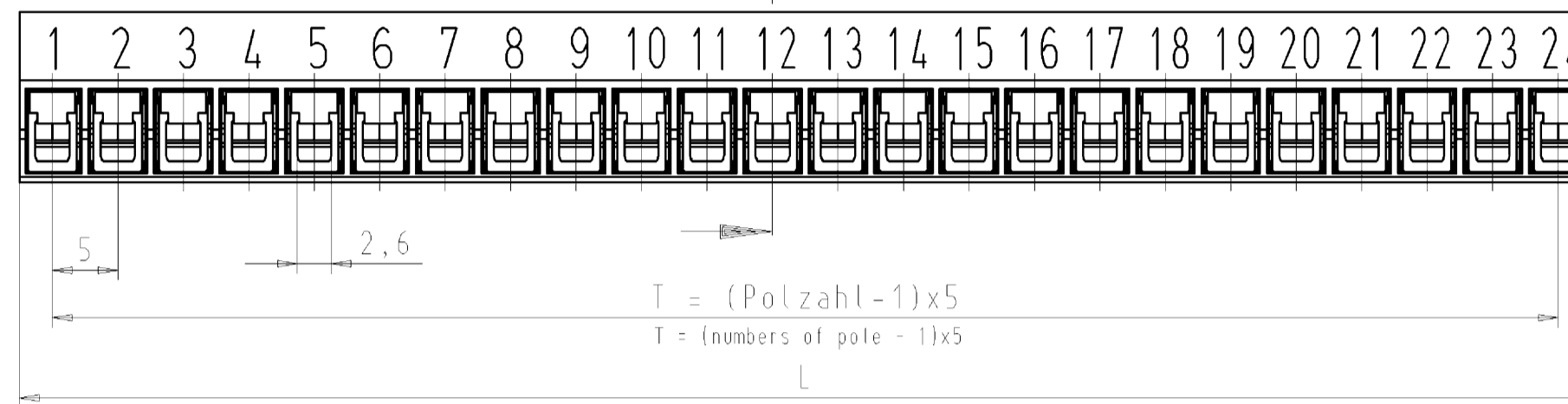
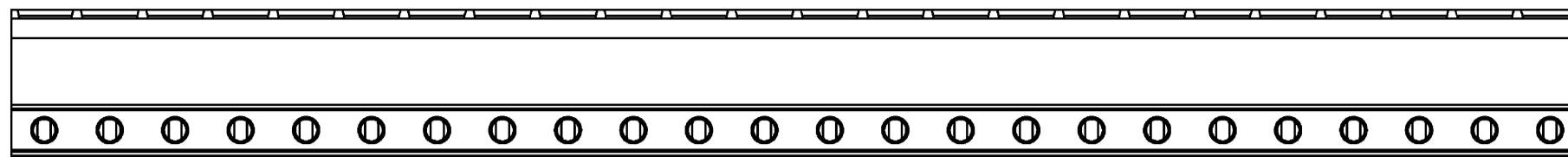
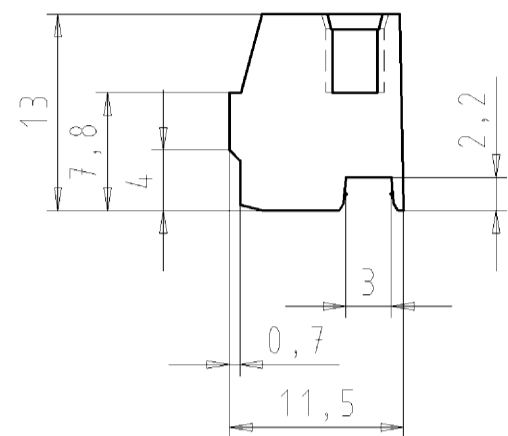
#### Product compliance

|                              |                    |
|------------------------------|--------------------|
| ROHS conformity status       | Compliant/Exempted |
| ROHS exceptions              | III-6(c)           |
| REACH-SVHC conformity status | Duty-To-Declare    |
| REACH-SVHC substances        | Lead               |
| REACH-SVHC CAS numbers       | 7439-92-1          |

#### Fits with

| Commercial Art.No.: | Article-type description:              | Description:  |
|---------------------|--|---|
| Z5.540.0625.0       | PCB pin header 8142... /6 90° D1.3/1.0 | PCB pin header, 6 poles, pitch: 5 mm, type of packing: carton, color: grey  |
| Z5.540.3625.0       | PCB pin header 8142... /6 90° D1.3/1.3 | PCB pin header, 6 poles, pitch: 5 mm, type of packing: carton, color: grey  |
| Z5.530.0625.0       | PCB pin header 8142... /6 D1.3/1.0     | PCB pin header, 6 poles, pitch: 5 mm, type of packing: carton, color: grey  |
| Z5.530.3625.0       | PCB pin header 8142 / 6                | PCB pin header, 6 poles, pitch: 5 mm, type of packing: carton, color: grey  |
| Z5.530.0604.0       | PCB pin header 8142 S / 6 THR          | PCB pin header, 6 poles, pitch: 5 mm, type of packing: carton, color: black, This product can be soldered by reflow and wave soldering                                  |
| Z5.529.0625.0       | PCB pin header 8142 / 6                | PCB pin header with screw connection with rising cage clamp system, 6 poles, max. cross section: 1.5 mm <sup>2</sup> , pitch: 5 mm, type of packing: carton,color: grey |

Gezeichnet/drawn:  
25.600.4453.0



|                       |             |                 |     |     |
|-----------------------|-------------|-----------------|-----|-----|
| 25.600.4453.F         | 8142/24     | 24              | 115 | 120 |
| 25.600.4353.F         | 8142/23     | 23              | 110 | 115 |
| 25.600.4253.F         | 8142/22     | 22              | 105 | 110 |
| 25.600.4153.F         | 8142/21     | 21              | 100 | 105 |
| 25.600.4053.F         | 8142/20     | 20              | 95  | 100 |
| 25.600.3953.F         | 8142/19     | 19              | 90  | 95  |
| 25.600.3853.F         | 8142/18     | 18              | 85  | 90  |
| 25.600.3753.F         | 8142/17     | 17              | 80  | 85  |
| 25.600.3653.F         | 8142/16     | 16              | 75  | 80  |
| 25.600.3553.F         | 8142/15     | 15              | 70  | 75  |
| 25.600.3453.F         | 8142/14     | 14              | 65  | 70  |
| 25.600.3353.F         | 8142/13     | 13              | 60  | 65  |
| 25.600.3253.F         | 8142/12     | 12              | 55  | 60  |
| 25.600.3153.F         | 8142/11     | 11              | 50  | 55  |
| 25.600.3053.F         | 8142/10     | 10              | 45  | 50  |
| 25.600.2953.F         | 8142/9      | 9               | 40  | 45  |
| 25.600.2853.F         | 8142/8      | 8               | 35  | 40  |
| 25.600.2753.F         | 8142/7      | 7               | 30  | 35  |
| 25.600.2653.F         | 8142/6      | 6               | 25  | 30  |
| 25.600.2553.F         | 8142/5      | 5               | 20  | 25  |
| 25.600.2453.F         | 8142/4      | 4               | 15  | 20  |
| 25.600.2353.F         | 8142/3      | 3               | 10  | 15  |
| 25.600.2253.F         | 8142/2      | 2               | 5   | 10  |
| Teile-Nr.<br>part-no. | Typ<br>type | Polzahl<br>pole | T   | L   |

| .F | Farbe/colour  |
|----|---------------|
| .0 | grau/grey     |
| .1 | schwarz/black |
| .9 | orange/orange |

Weitere Daten siehe Katalog  
further data see catalog

|  |   |  |
|--|---|--|
| Tolerierung Size ISO 14405/Tolerance system Size ISO 14405<br>(This ISO-standard describes the envelope principle. According to the envelope principle the deviations of form and parallelism are limited by the size tolerances). |   | ja/yes <input checked="" type="checkbox"/> Stoffverhalts- und Deklarationsliste nach UU-TQM-05/03 ist einzuhalten.<br>Conformity with Wieland document UU-TQM-05/03 (list of prohibited / declarable hazardous substances) to be declared! |
| Freitoleranz nach DIN ISO 2768 - m   | CAD - Zeichnung, keine manuellen Änderungen<br>CAD - drawing, no manual modifications allowed | 1. Verwendung:<br>First Use: -   |
| Blatt: 1 von 1<br>Sheet: 1 of 1  | Zeichnung Nr./Drawing No.<br>T 25.600.2253.0 01K  | Index  |
| Maße in mm/Dimensions are in mm  |   |  |
| Ersatz für/Replacement for: -  |   |  |
| wieland<br>Elektrische Verbindungen  |   | Benennung/Title<br>PLUGGABLE PCB TERMINAL<br>LP_STECKKLEMM<br>2 - 24 polig/poles   |
| Index Datum / Blatt<br>Date / Sheet  |   | s. Tabelle<br>see table  |
| Änderung/Revision  |   |  |

Weitergabe sowie Vervielfältigung dieses Dokuments, Verwertung und Mitteilung seines Inhalts sind verboten, soweit nicht ausdrücklich gestattet. Die Reproduktion, Verbreitung und Nutzung dieses Dokuments als well as the communication of its contents to others without express authorization is prohibited.

These dimensions will be especially checked at delivery  
Only inspection dimensions  
Nur für Inspektionszwecke  
Diese Maße werden bei Abnahme besonders geprüft  
Ausschließlich Prüfmaße  
Nur für abnahmetechnische Zwecke  
Nur für interne Zwecke gültig