

Data sheet

Commercial Art.No.: 92.050.8853.0

Flat cable adapter GST18I5A S E F8

intermediate feed-in for flat-cable 5x10 mm², double side connection via terminal blocks and cable gland M40x1,5 mm for H05VV-F or NYM-J cable 1 mm tin-plated steel housing



Commercial Art.No.	92.050.8853.0
EAN	4015573913417
Order Unit	1

Technical data

General

Rated current	50 A
Degree of protection (IP)	IP20
Mechanical coding	yes
Marking of poles	L3, L2, PE, N, L1
Lockable	self-locking (unlocking by tool)

Model

Model	central feed-in
Selection of phase	L1-L3

Classification

ECLASS 11	
ECLASS 8.1	27440601
ETIM 7.0	EC002588
ETIM 6.0	EC002588
ETIM 5.0	EC002588
ETIM 4.0	EC002588

Material

Fire load	1.671 kWh
-----------	-----------

Product compliance

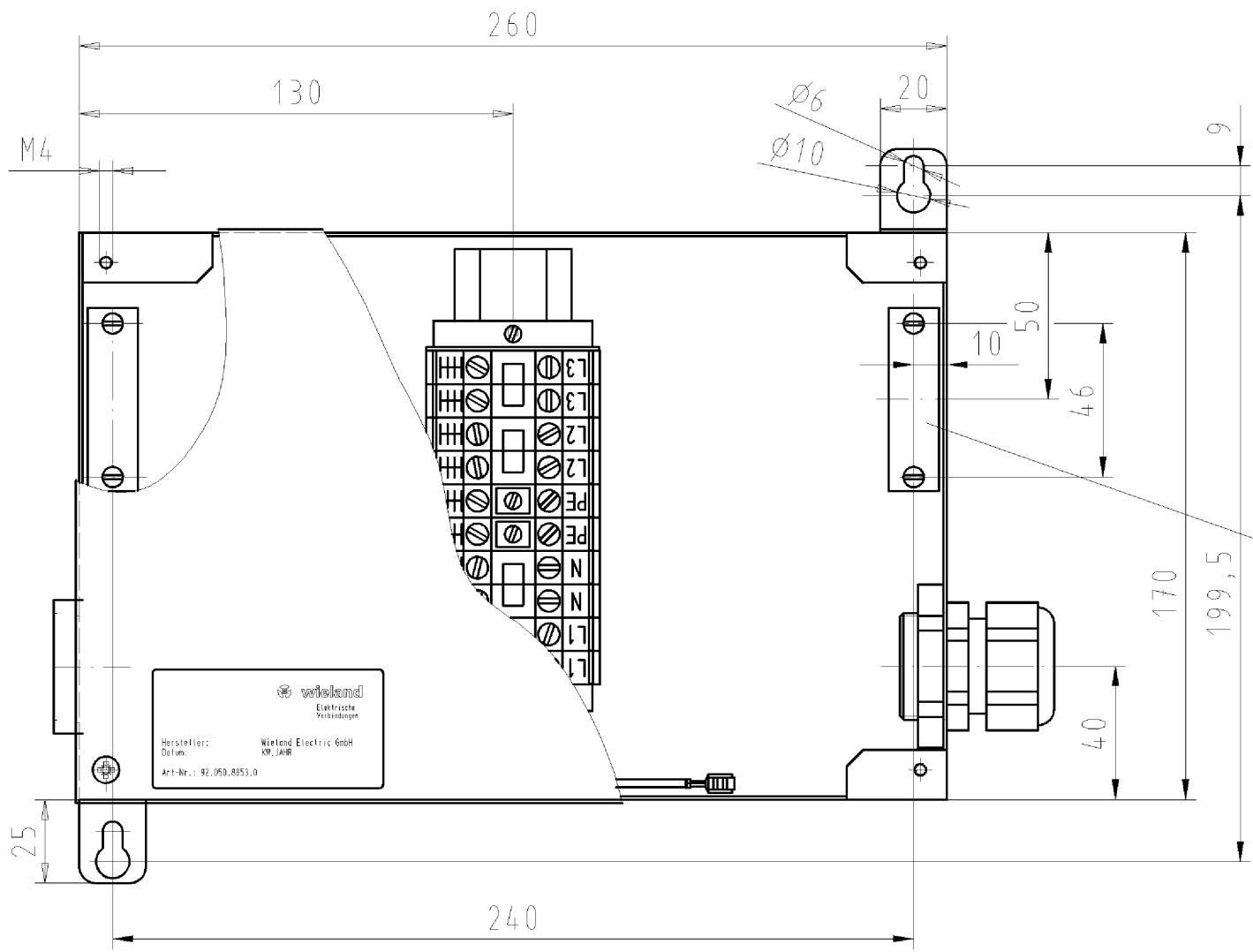
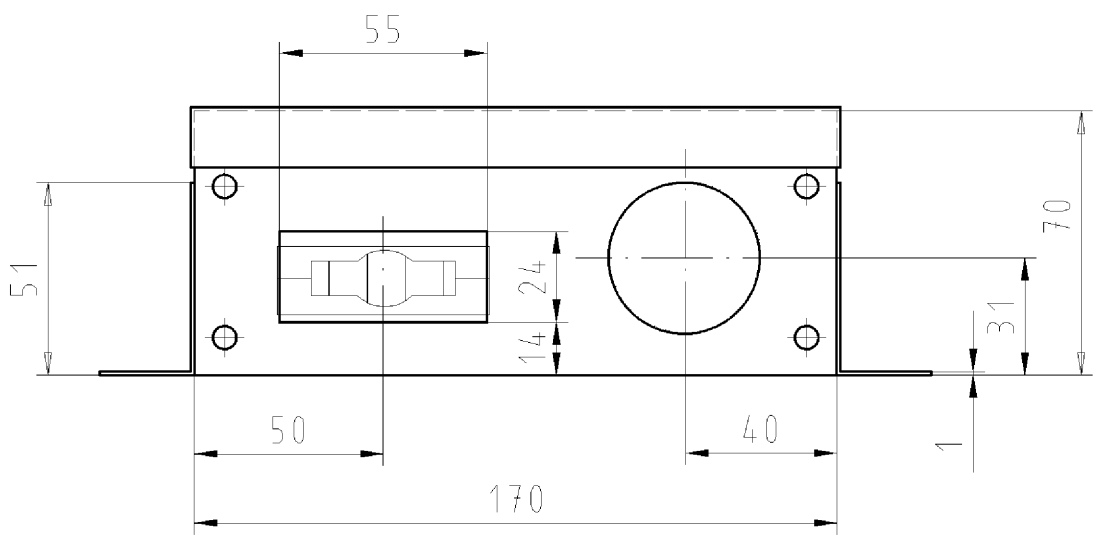
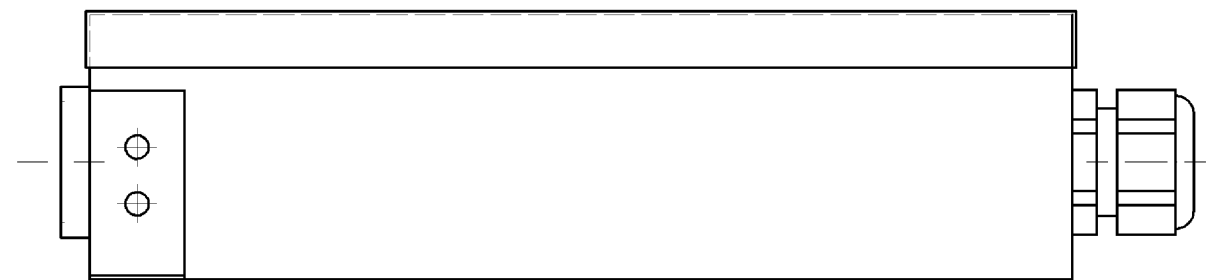
ROHS conformity status	Compliant/Exempted
ROHS exceptions	III-6(c)
REACH-SVHC conformity status	Duty-To-Declare
REACH-SVHC substances	Lead
REACH-SVHC CAS numbers	7439-92-1

Fits with

Commercial Art.No.:	Article-type description:	Description:
00.702.0306.7	Flat cable 5G10 PVC GRUEN	geis NRG flat cable, mains 5G10 mm ² , color light green, insulation: PVC
00.770.0306.7	Flat cable 5G10 FR/LSOH GRUEN	geis NRG flatcable, mains 5G10 mm ² , halogen free fire class: B2ca s1a d1 a1, color light green.

These dimensions will be especially checked at delivery
Only inspection dimensions
With /E marked dimensions are only valid for internal use

Diese Maße werden bei Abnahme besonders geprüft
Ausschließlich Prüfmaße
Mit /E gekennzeichnete Maße sind nur für interne Zwecke gültig



wieland
Elektrische Verbindungen
Hersteller: Wieland Electric GmbH
Datum: KW. JAHR
Art-Nr.: 92.050.8853.0

für Flachleitungssystem 5x10mm²
for flat cable system 5x10mm²
(Flachleitungen / flat cables
00.702.0306.7 und / and 00.709.0306.7)

Weitere Daten siehe Katalog
further data see catalog

Tolerierung nach DIN 7167/Tolerance system acc. to DIN 7167. (This DIN-standard describes the envelope principle. According to the envelope principle the deviations of form and parallelism are limited by the size tolerances).				ja/yes <input checked="" type="checkbox"/> Stoffverbots- und Deklarationsliste nach UU-TQM-05/03 ist einzuhalten. Conformity with Wieland document UU-TQM-05/03 (list of prohibited / declarable hazardous substances) to be declared!			
Freitoleranz nach General tolerance		CAD - Zeichnung, keine manuellen Änderungen CAD - drawing, no manual modifications allowed		1. Verwendung: - First Use:		Blatt: 1 von 1 Sheet: of 1	
/		Werkstoff/Material		2006 Tag/Date Name		Zeichnung Nr./Drawing No.	
/		Maßstab/Scale		gezeichnet/drawn 20.07. Schmitt J.		92.050.8853.0 01K	
/		%		geprüft/checked - -		Index	
/		Vol. mm ³ Oil./Surf. mm ²		Normgepr. Stand. check - -		Maße in mm/Dimensions are in mm	
/		Ersatz für/Replacement for: -		Type		Benennung/Title	
/		wieland		GST1815A SE F8		MITTELEINSPEISUNG max. 10mm ² flat cable power supply	
Index Datum / Blatt Date / Sheet		Änderung/Revision					

Weitergabe sowie Vervielfältigung dieses Dokuments, Verwertung und Mitteilung seines Inhalts sind verboten, soweit nicht ausdrücklich gestattet. The reproduction, distribution and utilization of this document as well as the communication of its contents to others without express authorization is prohibited.

920508853001K_4_CADW1042_Schnitt 2006-07-20T11:44:43 1.000