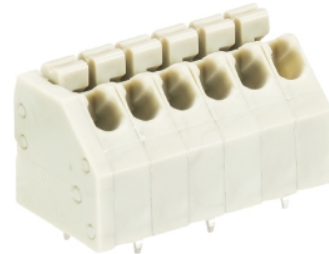


Data sheet

Commercial Art.No.: 27.010.3753.0

Printed circuit board terminal 8562 N / 7 OB HW

PCB terminal, 7 poles, with solder pin (3.5mm), pitch: 3.5 mm, type of packing: carton, color: grey



Commercial Art.No.	27.010.3753.0
EAN	4015573872998
Order Unit	50

Certificates / Approvals



Technical data

General

Modular spacing	3.5 mm
Connection type	spring clamp connection
Soldering process	Wave soldering
Packaging	Carton
Number of poles	7
Conductor to circuit board	180°
Number of levels	1
Integrated test socket	No
Insulation plate	yes
Retaining pins	No
Marking	No

Technical data

Nominal cross section	1.5 mm ²
Rated current	2 A
Overvoltage Category I	1000 V
Overvoltage Category II	690 V
Overvoltage Category III	250 V
Rated impulse voltage	4 kV
Wire strip length	8 mm

Connection Data

Minimum cross section solid	0.5 mm ²
Maximum cross section solid	1.5 mm ²
Minimum cross section fine stranded	0.5 mm ²
Maximum cross section fine stranded	1.5 mm ²

Wire strip length	8 mm
-------------------	------

Technical Data UL/CSA

Cross section UL	16-20 AWG
Voltage UL	300 V
Current field wiring	2 A
Current factory wiring	2 A
Cross section CSA	14-20 AWG
Voltage CSA	300 V
Current CSA	2 A

Other

Type of insulation material	Thermoplastic
Color	Grey
Height	12.8 mm
Length	24.5 mm
Depth	12 mm
Material attachment screw	None
Material contact base	CuSn
Material contact surface	Sn

Classification

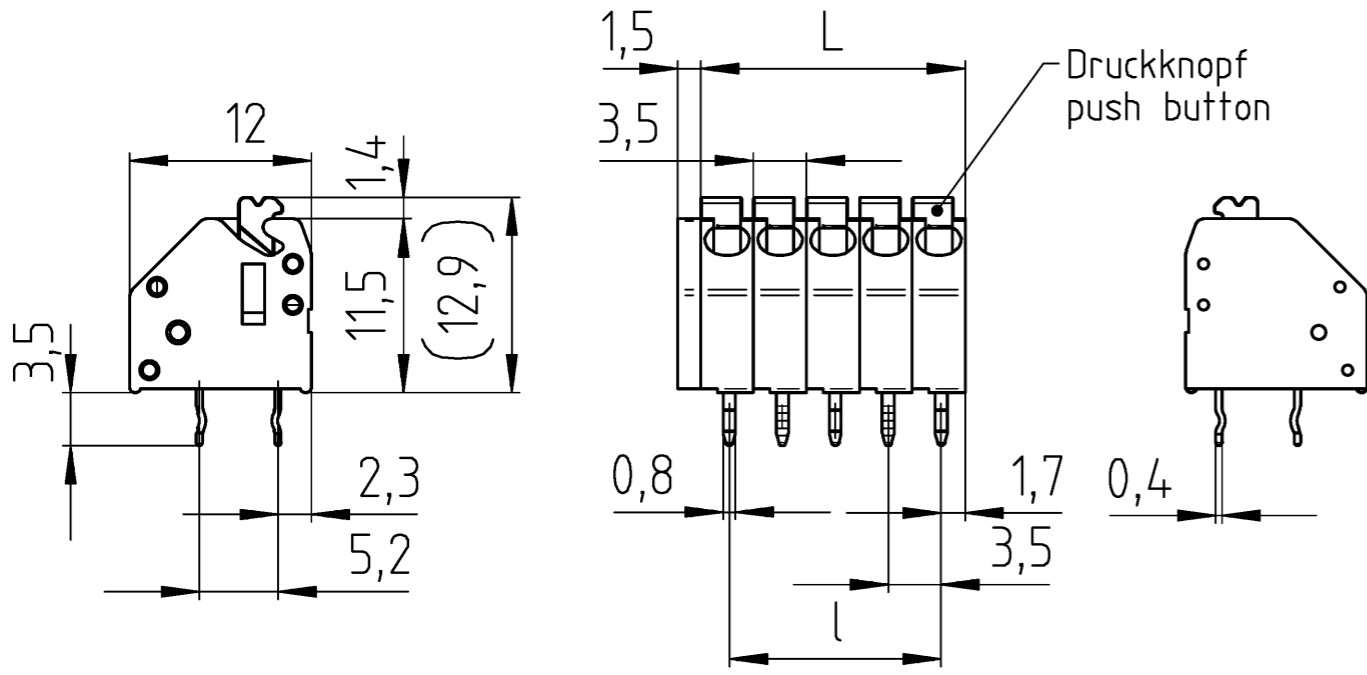
ECLASS 11	
ECLASS 8.1	27440401
ETIM 7.0	EC002643
ETIM 6.0	EC002643
ETIM 5.0	EC002643
ETIM 4.0	EC002643

Product compliance

ROHS conformity status	Compliant
REACH-SVHC conformity status	Compliant

A
 Weitergabe sowie Vervielfältigung dieses Dokuments, Verwertung und Mitteilung seines Inhalts sind verboten, soweit nicht ausdrücklich gestattet.
 The reproduction, distribution and utilization of this document as well as the communication of its contents to others without express authorization is prohibited.

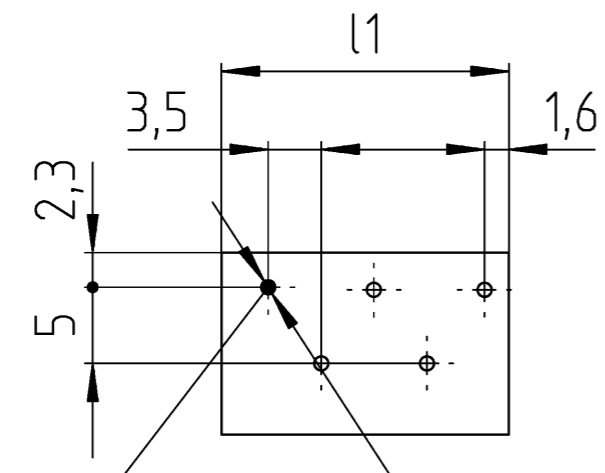
Gezeichnete Ausführung: 27.010.3553.0
 drawn version:



These dimensions will be especially checked at delivery
 Only inspection dimensions
 With /E marked dimensions are only valid for internal use

D
 Diese Maße werden bei Abnahme besonders geprüft
 Ausschließlich Prüfmäße
 Mit /E gekennzeichnete Maße sind nur für interne Zwecke gültig

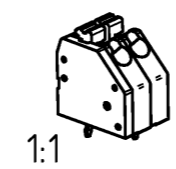
Lochbild
 PCB layout



F
 erster Pin immer hinten
 (gültig für alle Polzahlen)
 first pin always in back side
 (valid for all poles)

Technische Daten technical data			
Bemessungsspannung V rated voltage	VDE 250	UL 300	CSA 300
Bemessungsstrom A rated current	2	2	2
Anschlussbereich max. mm ² /AWG connection range	1,5	16	16
Verschmutzungsgrad 3 / Überspannungskategorie III pollution degree 3 / overvoltage category III			
Brennbarkeitsklasse UL 94 - V0 flamability rating			
Material : PA666 kieselgrau, ähnlich RAL 7032 material : PA666 pebble grey similar to RAL 7032			

Teilenummer part number	Typ type	Polzahl poles	l	L	l1
27.010.3253.0	8562N/ 2 OB HW	2	3,5	7	8,5
27.010.3353.0	8562N/ 3 OB HW	3	7	10,5	12
27.010.3453.0	8562N/ 4 OB HW	4	10,5	14	15,5
27.010.3553.0	8562N/ 5 OB HW	5	14	17,5	19
27.010.3653.0	8562N/ 6 OB HW	6	17,5	21	22,5
27.010.3753.0	8562N/ 7 OB HW	7	21	24,5	26
27.010.3853.0	8562N/ 8 OB HW	8	24,5	28	29,5
27.010.3953.0	8562N/ 9 OB HW	9	28	31,5	33
27.010.4053.0	8562N/10 OB HW	10	31,5	35	36,5
27.010.4153.0	8562N/11 OB HW	11	35	38,5	40
27.010.4253.0	8562N/12 OB HW	12	38,5	42	43,5
27.010.4353.0	8562N/13 OB HW	13	42	45,5	47
27.010.4453.0	8562N/14 OB HW	14	45,5	49	50,5
27.010.4553.0	8562N/15 OB HW	15	49	52,5	54
27.010.4653.0	8562N/16 OB HW	16	52,5	56	57,5
27.010.4753.0	8562N/17 OB HW	17	56	59,5	61
27.010.4853.0	8562N/18 OB HW	18	59,5	63	64,5
27.010.4953.0	8562N/19 OB HW	19	63	66,5	68
27.010.5053.0	8562N/20 OB HW	20	66,5	70	71,5
27.010.5153.0	8562N/21 OB HW	21	70	73,5	75
27.010.5253.0	8562N/22 OB HW	22	73,5	77	78,5
27.010.5353.0	8562N/23 OB HW	23	77	80,5	82
27.010.5453.0	8562N/24 OB HW	24	80,5	84	85,5



Weitere Daten siehe KATALOG oder eKatalog
 additional data see CATALOG or eCATALOG
www.wieland-electric.com
eshop.wieland-electric.com

Tolerierung Size ISO 14405 © / Tolerance system Size ISO 14405 ©. ja/yes Stoffverbots- und Deklarationsliste nach WN 5020.010 ist einzuhalten.
 (This ISO-standard describes the envelope principle. According to the envelope principle the deviations of form and parallelism are limited by the size tolerances). Conformity with Wieland document WN 5020.010 e (list of prohibited / declarable hazardous substances) to be declared!

Freitoleranz nach General tolerance CAD - Zeichnung, keine manuellen Änderungen CAD - drawing, no manual modifications allowed 1. Verwendung: First Use: Blatt: 1 von 1 Sheet: 1 of 1

Werkstoff / Material	Tag/Date	Name	Zeichnung Nr. / Drawing No.	Index
gezeichnet / drawn	30.06.2021	Schmitt J.		
Maßstab / Scale	2:1		T 27.010.3253.0 13K	-
Elektronische Freigabe / Electronic Release				
Maße in mm / Dimensions are in mm				
Vol.	mm ³ Dfl./Srf.	mm ²	Ersatz für / Replacement for:	
wieland		Type	Benennung/Title	
Index Datum / Blatt Date / Sheet		8562N/ OB HW	LP.KLEMME	
Änderung / Revision		PCB-Terminal pitch 3,5mm ; screwless 45°-wire entry Rastmaß 3,5mm schraublos 45° Kabeleingang		