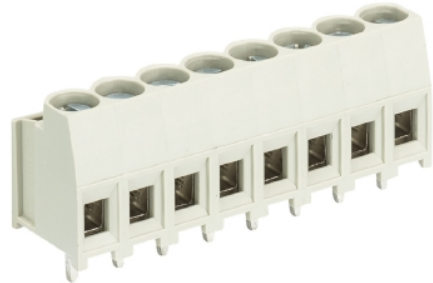


## Data sheet

Commercial Art.No.: 25.155.0353.0

Printed circuit board terminal 8191 R / 3 Z OB

PCB terminal with screw connection with rising cage clamp system, 3 poles, with insulating plate, with solder pin (3.5mm), max. cross section: 2.5 mm<sup>2</sup>, pitch: 5 mm, type of packing: carton, color: grey



|                    |               |
|--------------------|---------------|
| Commercial Art.No. | 25.155.0353.0 |
| EAN                | 4015573509917 |
| Order Unit         | 500           |

Certificates / Approvals



## Technical data

### General

|                            |                  |
|----------------------------|------------------|
| Modular spacing            | 5 mm             |
| Connection type            | screw connection |
| Soldering process          | Wave soldering   |
| Packaging                  | Carton           |
| Number of poles            | 3                |
| Conductor to circuit board | 180°             |
| Number of levels           | 1                |
| Integrated test socket     | No               |
| Insulation plate           | yes              |
| Retaining pins             | No               |
| Marking                    | No               |

### Technical data

|                          |                     |
|--------------------------|---------------------|
| Nominal cross section    | 2.5 mm <sup>2</sup> |
| Rated current            | 16 A                |
| Overvoltage Category I   | 1000 V              |
| Overvoltage Category II  | 690 V               |
| Overvoltage Category III | 250 V               |
| Rated impulse voltage    | 4 kV                |
| Wire strip length        | 6.5 mm              |

### Connection Data

|                                     |                      |
|-------------------------------------|----------------------|
| Minimum cross section solid         | 0.14 mm <sup>2</sup> |
| Maximum cross section solid         | 4 mm <sup>2</sup>    |
| Minimum cross section fine stranded | 0.14 mm <sup>2</sup> |
| Maximum cross section fine stranded | 2.5 mm <sup>2</sup>  |

|                   |        |
|-------------------|--------|
| Wire strip length | 6.5 mm |
|-------------------|--------|

#### Technical Data UL/CSA

|                        |           |
|------------------------|-----------|
| Cross section UL       | 22-12 AWG |
| Voltage UL             | 300 V     |
| Current field wiring   | 20 A      |
| Current factory wiring | 30 A      |
| Cross section CSA      | 22-12 AWG |
| Voltage CSA            | 300 V     |
| Current CSA            | 25 A      |

#### Other

|                             |               |
|-----------------------------|---------------|
| Type of insulation material | Thermoplastic |
| Color                       | Grey          |
| Height                      | 15 mm         |
| Length                      | 15.85 mm      |
| Depth                       | 11.5 mm       |
| Material attachment screw   | Steel         |
| Material contact base       | E-Cu          |
| Material contact surface    | Sn            |

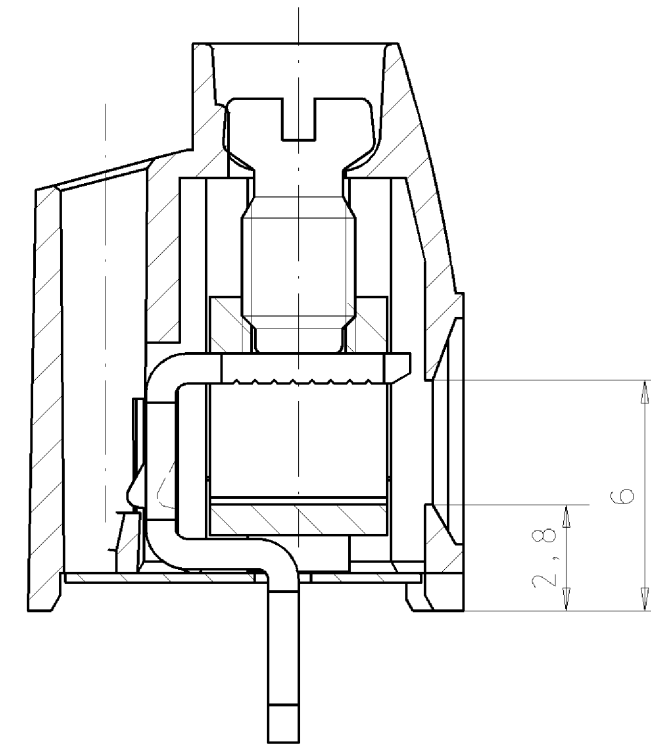
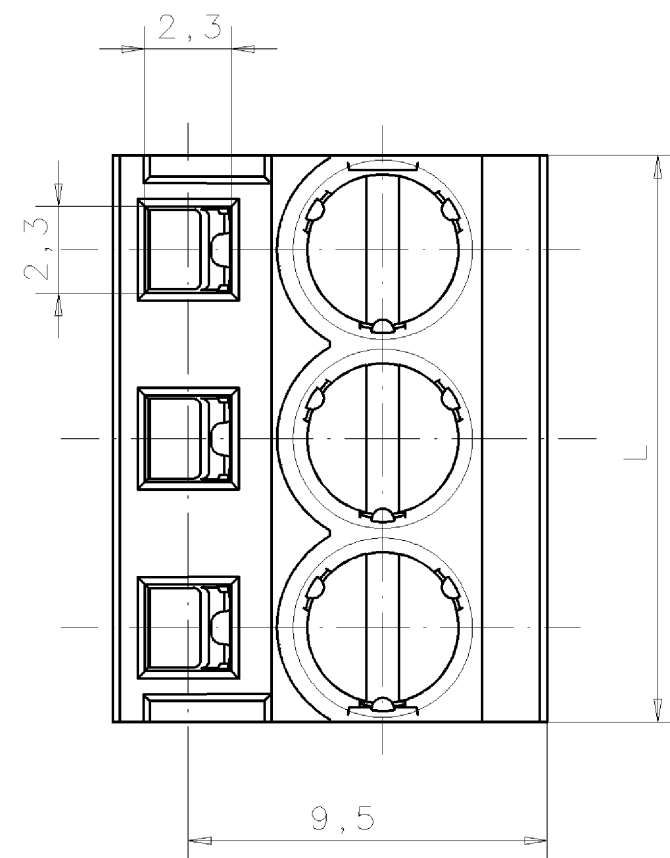
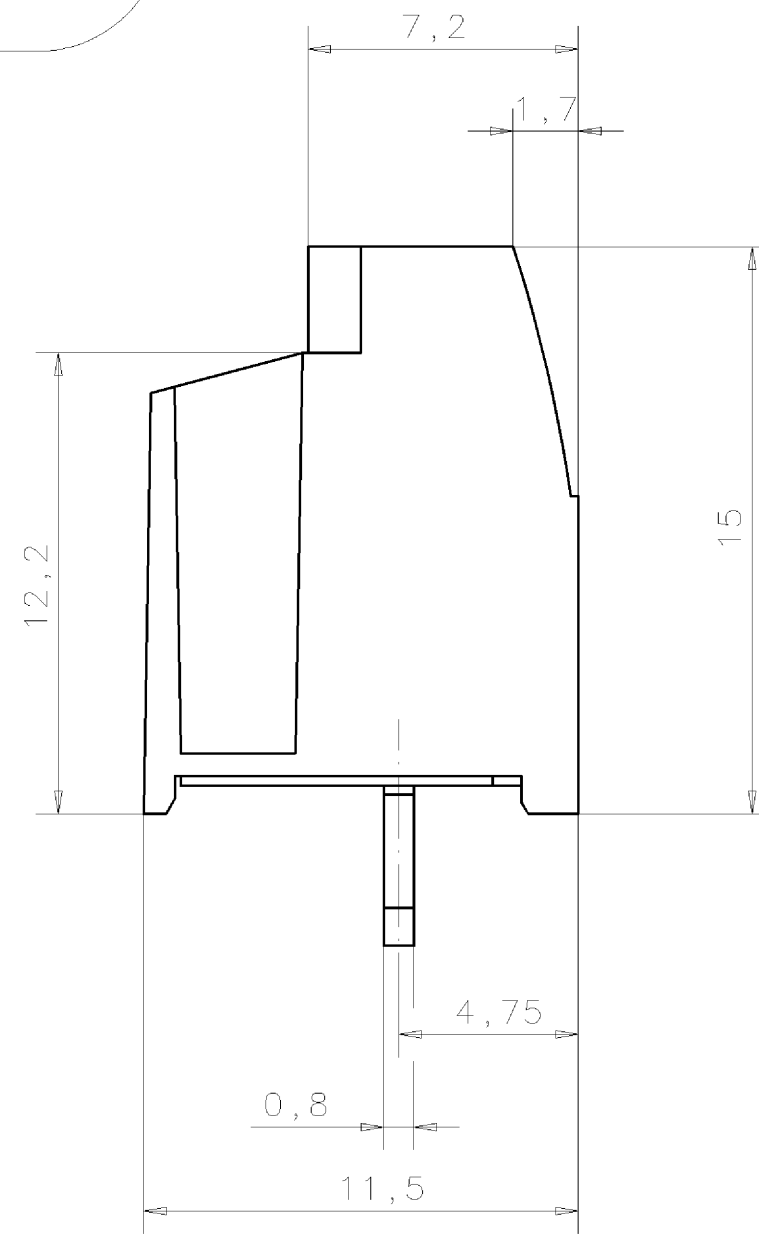
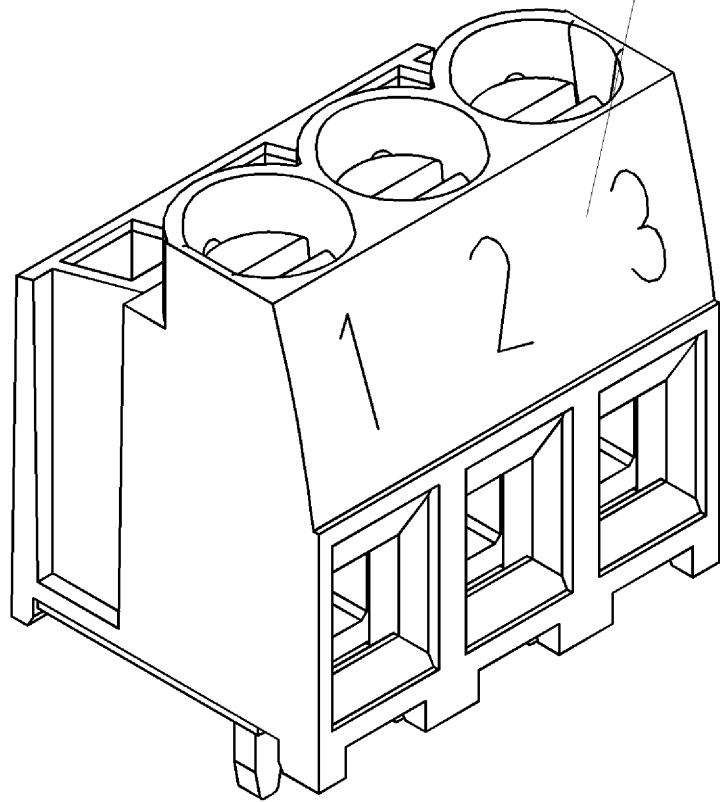
#### Classification

|            |          |
|------------|----------|
| ECLASS 11  |          |
| ECLASS 8.1 | 27440401 |
| ETIM 7.0   | EC002643 |
| ETIM 6.0   | EC002643 |
| ETIM 5.0   | EC002643 |
| ETIM 4.0   | EC002643 |

#### Product compliance

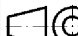

|                              |                    |
|------------------------------|--------------------|
| ROHS conformity status       | Compliant/Exempted |
| ROHS exceptions              | III-6(c)           |
| REACH-SVHC conformity status | Duty-To-Declare    |
| REACH-SVHC substances        | Lead               |
| REACH-SVHC CAS numbers       | 7439-92-1          |

Ausfuehrungen mit oder ohne Beschriftung  
Typ siehe Tabelle  
version with or without marking  
type see table



|    |               |
|----|---------------|
| .F | Farbe/colour  |
| .0 | grau/grey     |
| .1 | schwarz/black |

|                                     |                                      |  |  |             |                                       |
|-------------------------------------|--------------------------------------|--|--|-------------|---------------------------------------|
| 25.155.2253.F-<br>25.155.3853.F     | 8191 R / 2 Z -<br>8191 R /18 Z       | 2 -<br>18                                | $T = \frac{\text{Polzahl} - 1}{\text{number of poles} - 1} \times 5$ | $L = T + 5$ | 1-18                                  |
| 25.155.0253.F-<br>25.155.1853.F     | 8191 R / 2 Z OB -<br>8191 R /18 Z OB | 2 -<br>18                                | $T = \frac{\text{Polzahl} - 1}{\text{number of poles} - 1} \times 5$ | $L = T + 5$ |                                       |
| <b>Teile-Nr.</b><br><b>part-no.</b> | <b>Typ</b><br><b>type</b>            | <b>Polzahl</b><br><b>number of poles</b> | <b>T</b>   | <b>L</b>    | <b>Beschriftung</b><br><b>marking</b> |

|  |  |   |   |                             |  |                               |          |                                    |                                 |  |       |
|--|--|---|---|-----------------------------|--|-------------------------------|----------|------------------------------------|---------------------------------|--|-------|
| Tolerierung nach DIN 7167/Tolerance system acc. to DIN 7167.<br>(This DIN-standard describes the envelope principle. According to the envelope principle the deviations of form and parallelism are limited by the size tolerances). |  |   |   |                             | ja/yes <input checked="" type="checkbox"/> Schweizerbots- und Deklarationsliste nach UU-TM-05/03 ist einzuhalten.<br>Conformity with Wieland document UU-TM-05/03 (list of prohibited / deklarable hazardous substances) to be declared! |                               |          |                                    |                                 |  |       |
| Freitoleranz nach<br>General tolerance   |  |   | CAD - Zeichnung, keine manuellen Änderungen<br>CAD - drawing, no manual modifications allowed |                             |  | 1.Verwendung: -<br>First Use: |          |                                    | Blatt: 1 von 1<br>Sheet: 1 of 1 |  |       |
| /  |  |  | Werkstoff/Material  |                             | 2008   | Tag/Date                      | Name     | T                                  | Zeichnung Nr./Drawing No.       |  | Index |
| /  |  |   |   |                             | gezeichnet<br>drawn  | 18.03.                        | Düsch T. |                                    |                                 |  |       |
| / Maßstab/Scale  |  |   |   |                             | geprüft<br>checked   | -                             | -        |                                    |                                 |  |       |
| / 5:1  |  |   |   |                             | Nummer<br>Stand, check   | -                             | -        |                                    |                                 |  |       |
| /  |  |   | Maße in mm/Dimensions are in mm   |                             |  |                               |          |                                    |                                 |  |       |
| / Vol.   |  | mm  |   | Gfl./Surf.                  |  | mm                            |          | Ersatz für/Replacement for: -      |                                 |  |       |
| /  |  |  |   | Type                        |  | Benennung/Title               |          | PCB TERMINAL                       |                                 |  |       |
| /  |  |   |   | 8191 R                      |  |                               |          | LP_KLEMME                          |                                 |  |       |
| /  |  |   |   |                             |  |                               |          | 250 V / 16 A / 2,5 mm <sup>2</sup> |                                 |  |       |
| Index  |  | Datum / Blatt<br>date / Sheet   |   |                             |  |                               |          |                                    |                                 |  |       |
| Änderung/Revision  |  |   |   | Elektrische<br>Verbindungen |  |                               |          |                                    |                                 |  |       |

Weitere Daten siehe Katalog  
further data see catalog

Weitergabe sowie Vervielfältigung dieses Dokuments, Verwertung und Mitteilung seines Inhalts sind verboten, soweit nicht ausdrücklich gestattet.  
The reproduction, distribution and utilization of this document as well as the communication of its contents to others without express authorization is prohibited.