

## Wire To Board Connectors \* Wire To Wire Connectors

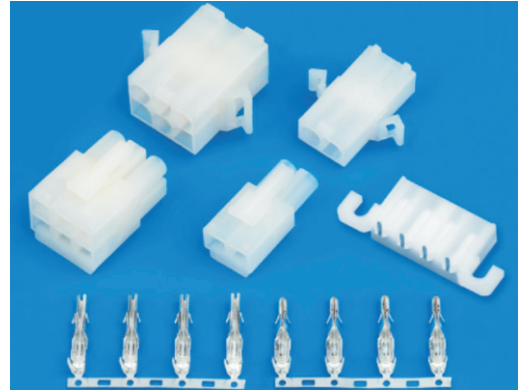
### KLS1-6.70 6.70mm pitch Wire To Board Connectors

#### Specifications:

Voltage rating:300v.Ac/Dc  
Current rating:12~8A  
Contact resistance: $\leq 0.01\Omega$   
Insulation resistance: $\geq 1000M\Omega$   
Withstand voltage:2000v.Ac/1min  
Poles:1、2、3、4、6、9、12、15  
Applicable PC board thickness:1.6mm  
Temperature range:-25℃~85℃

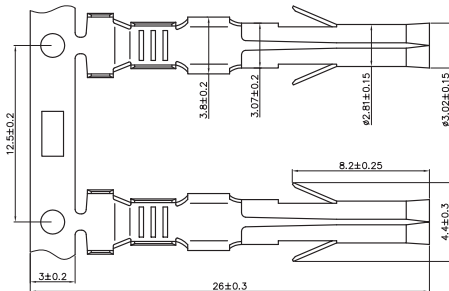
#### Material:

Plug housing:PA66 UL94V-2(0)  
Receptacle housing:PA66 UL94V-2(0)  
Terminal:Phos.bronze Tin/plated

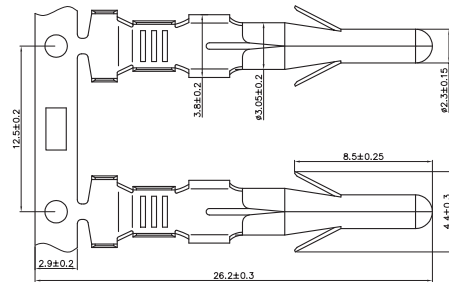


I

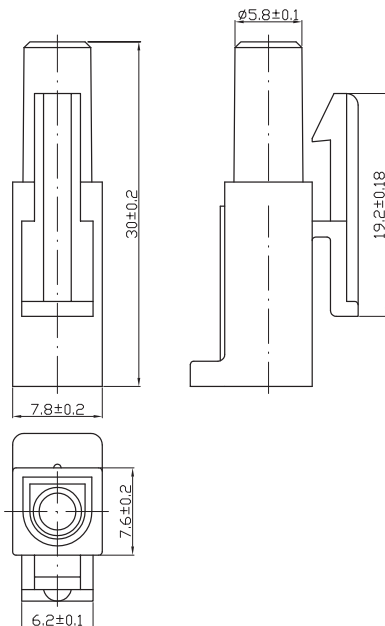
L-KLS1-6.70-FT



L-KLS1-6.70-MT



L-KLS1-6.70-1×01R



L-KLS1-6.70-1×01P

