

Data sheet

Commercial Art.No.: 57.404.8055.9

Multi-tier terminal WK 4 E / U G-ULR/V0

Multi-tier function terminal block with screw connection for mounting on TS 35 and TS 32, nominal cross section 4 mm², width 6 mm, color orange



Commercial Art.No.	57.404.8055.9
EAN	4015573604704
Order Unit	100

Certificates / Approvals



Technical data

General

Nominal cross section	4 mm ²
Color	orange
Number of levels	2
Number of clamp positions per level	2
Width/grid dimension	6 mm
Insulating housing	PA666
Inflammability class of insulation material acc. with UL94	V0
Mounting method	DIN rail (top hat rail)/G-rail
Terminal blocks for electrical installations	No
Type of component	Diode

Technical data

Rated current	1 A
Rated voltage	400 V
Pollution degree	3
Closing plate required	yes
Type of insulation material	Thermoplastic
Length	61.6 mm

Connection Data

Connection type 1	screw connection
Connection type 2	screw connection
Minimum cross section solid	0.5 mm ²
Maximum cross section solid	4 mm ²
Minimum cross section fine stranded	0.5 mm ²
Maximum cross section fine stranded	4 mm ²
Wire strip length	9 mm
Torque conductor mounting	0.5 Nm

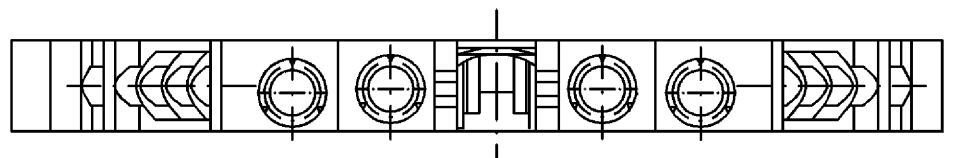
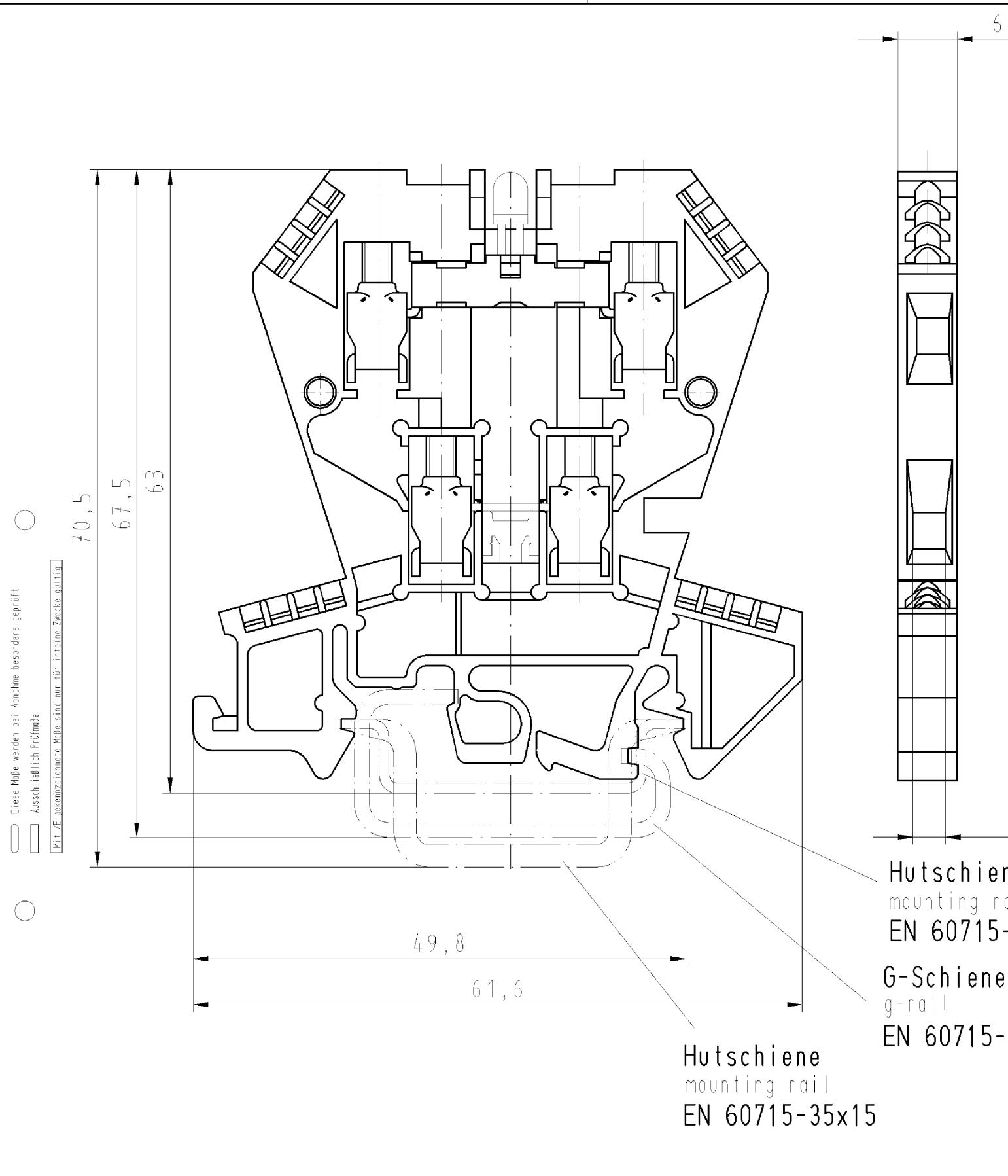
Technical Data UL/CSA

Cross section UL	22-10 AWG
Voltage UL	300 V

Current factory wiring	20 A
Current field wiring	20 A
Cross section CSA	20-12 AWG
Voltage CSA	300 V
Current CSA	10 A

Classification

ECLASS 11	
ECLASS 8.1	27141127
ETIM 7.0	EC000903
ETIM 6.0	EC000903
ETIM 5.0	EC000903
ETIM 4.0	EC000903
ETIM 3.0	EC000903



Weitere Daten siehe Katalog
further data see catalog

Teile-Nr. /part-nr.	Typ/type WK4 E/U...	LED-Farbe LED-colour	mit gedrehter Diode with inverted diode	
57.404.8355.5	...G-URL			
57.404.8055.9	...G-ULR		X	
57.404.8255.5	...G0			
57.404.8155.9	...GU		X	
57.404.7255.5	...LD+P0	rot/red		
57.404.8755.5	..LDG+P024	grün/green		
57.404.7455.9	..LD-PO 24	rot/red		
57.404.7955.5	...G2			
57.404.8855.9	...G2/1		X	
57.404.8455.5	...LD 42	rot/red		
57.404.6255.9	...LD+P0 24LD	rot/red		

1
2
3
4
5
6
7
8
10
11
12
13
14
15
16
17
18
19
20
M1
M2
M3
L
G
1.1
2.1
1.1

Weitergabe sowie Vervielfältigung dieses Dokuments, Verwertung und Mitteilung seiner Inhalte ist ohne schriftliche Genehmigung der Wieland-Werke AG. The further communication of its contents to others without express authorization is prohibited.

R=2,2K
0,35W

R=2,2K
0,35W

1A/1000V

1A/1000V
R=6,8K
0,6W

1A/1000V
R=2,2K
0,35W

Freitoleranz nach		CAD - Zeichnung, keine manuellen Änderungen			1. Verwendung: -		Bl.: 1 von 1		
	Maßstab	Werkstoff und Oberfläche:		2003	Tag	Name		Zeichnung Nr. T 57.404.6255.9 01K	Index
	2:1			Entworfen	15.05.	Schmitt J.			
				Geprüft	-				
	Vol.	mm ³	Dfl.	mm ²	Normgepr.	-	Ersatz für: -		
				WK 4		Benennung ETAGENKLEMME modular double-deck terminal			
				E/U ...					
Buchstabe	Datum / Blatt								
Änderung									