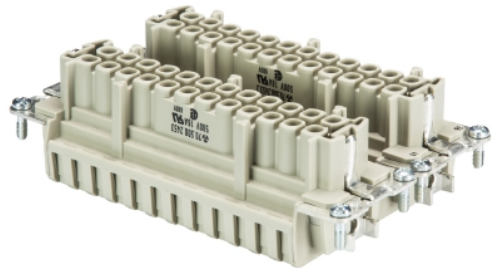


Data sheet

Commercial Art.No.: 70.500.4853.0

Female insert BAS BUF 48 2,5 50

Female insert revos basic, 48-poles, rated current: 16A, rated voltage:500V, with tinned contacts



Commercial Art.No.	70.500.4853.0
EAN	4015573374898
Order Unit	1

Certificates / Approvals



Technical data

General

Model	Female insert
Inflammability class of insulation material acc. with UL94	V2
Color	Grey
Mating cycles	500
Pollution degree	3
Modular version	No
Operating temperature range min.	-40 °C
Operating temperature range max.	120 °C

Connection Data

Connection type	spring clamp connection
Number of poles	48
Plus switching contacts	0
Number of pole for rated current 2	0
Number of pole for rated current 3	0
Total number of poles (without ground contact)	48
With wire protection	yes
Min. conductor diameter rigid (solid/stranded)	0.5 mm ²
Max. conductor diameter rigid (solid/stranded)	2.5 mm ²
Protective contact	yes

Technical Data UL/CSA

Rated voltage according to UL/CSA	600 V
Rated current according UL	16 A
Rated current according CSA	16 A
Min. conductor cross section flexible wire	0.14 mm ²
Max. conductor cross section flexible wire	2.5 mm ²

Conductor cross section flexible AWG wire	26-12 AWG
---	-----------

Model

With housing	No
--------------	----

Contacts

Contact material	Copper alloy
Surface	Silver-plated
Contact resistance	≤ 3 mOhm
Wire strip length	7 mm

Screws head design/recomm. Torque

Mounting screws	H1/0.5-0.7 Nm
Ground conductor screws	H2/1.2-1.6 Nm

Technical Data DIN EN 61984

Nominal voltage	500 V
Rated voltage face/ground	500 V
Nominal current	16 A
Rated impulse voltage	6 kV

Classification

ECLASS 11	
ECLASS 8.1	27440205
ETIM 7.0	EC000438
ETIM 6.0	EC000438
ETIM 5.0	EC000438
ETIM 4.0	EC000438

Product compliance

ROHS conformity status	Compliant/Exempted
ROHS exceptions	III-6(c)
REACH-SVHC conformity status	Duty-To-Declare
REACH-SVHC substances	Lead
REACH-SVHC CAS numbers	7439-92-1

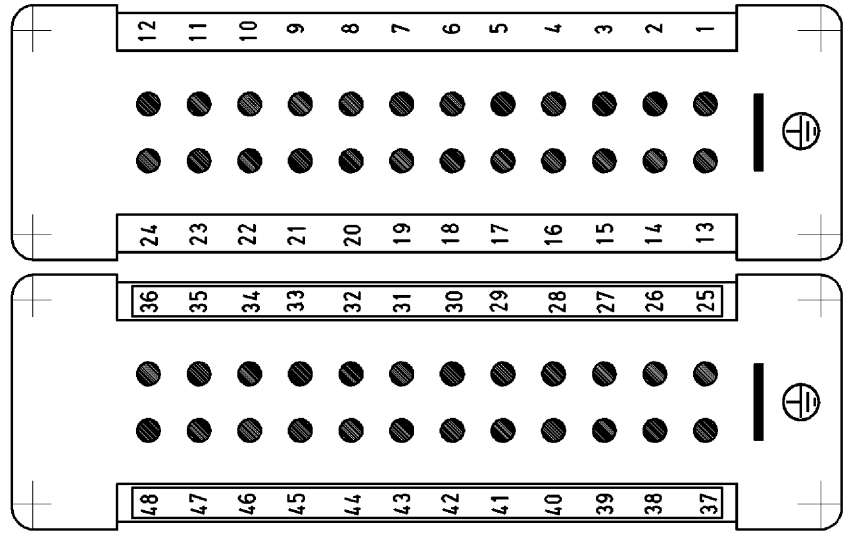
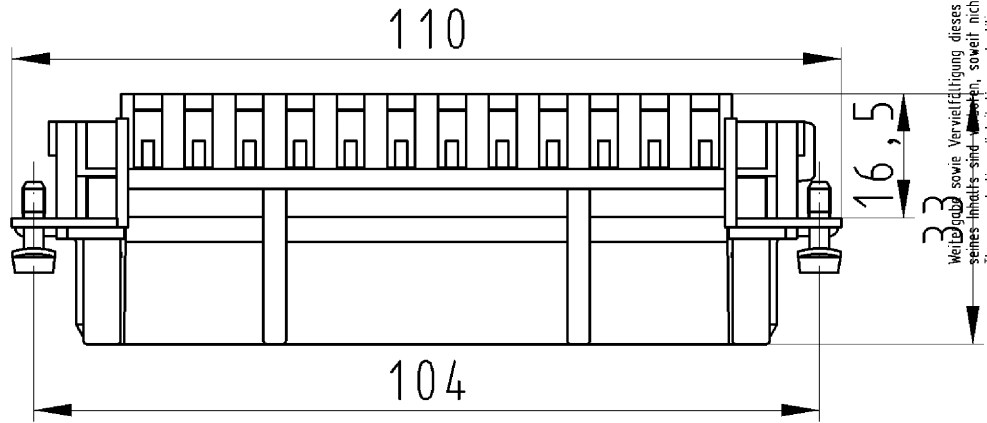
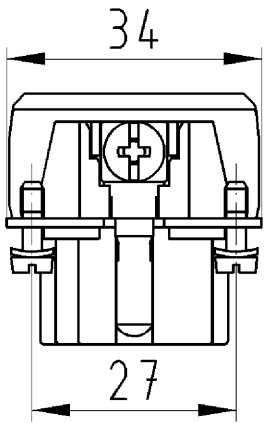
Accessories

Commercial Art.No.:	Article-type description:	Description:
06.502.4000.0	screwdriver DIN 5264 A 0,6 x 3,5	Screw driver according to DIN 5264 A, blade: 0.6x3.5 mm, long and straight version

Fits with

Commercial Art.No.:	Article-type description:	Description:
70.350.4835.0	Hood BAS GOT GG 48 M32 50 A0	Hood revos basic made of aluminum, for single locking lever with cable gland M32 on the right side (IP54), low version, 48-poles
70.350.4835.1	Hood BAS GOT GG 48 M32 50 A1	Hood revos basic made of aluminum, for single locking lever with threaded hole M32 on the right side, low version, 48-poles

70.350.4835.3	Hood BAS GOT GG 48 M32 A3	Hood revos basic made of aluminum, for single locking lever with trumpet gland M32 on the right side (IP54), low version, 48-poles
70.352.4835.0	Hood BAS GOT GI 48 M32 50 A0	Hood revos basic made of aluminum, for single locking lever with cable gland M32 on the top (IP54), low version, 48-poles
70.352.4835.1	Hood BAS GOT GI 48 M32 50 A1	Hood revos basic made of aluminum, for single locking lever with threaded hole M32 on the top, low version, 48-poles
70.352.4835.2	Hood BAS GOT GI 48 M32 50 A2	Hood revos basic made of aluminum, for single locking lever with nozzleM32 on the top, low version, 48-poles
70.352.4835.3	Hood BAS GOT GI 48 M32 A3	Hood revos basic made of aluminum, for single locking lever with trumpet gland M32 on the top (IP54), low version, 48-poles
70.353.4835.1	Hood BAS GOT GG 48 M40 50 A1	Hood revos basic made of aluminum, for single locking lever with threaded hole M40 on the right side, low version, 48-poles
70.353.4835.2	Hood BAS GOT GG 48 M40 50 A2	Hood revos basic made of aluminum, for single locking lever with nozzleM40 on the right side, low version, 48-poles
70.354.4835.1	Hood BAS GOT GI 48 M40 50 A1	Hood revos basic made of aluminum, for single locking lever with threaded hole M40 on the top, low version, 48-poles
70.354.4835.2	Hood BAS GOT GI 48 M40 50 A2	Hood revos basic made of aluminum, for single locking lever with nozzleM40 on the top, low version, 48-poles
70.320.4828.0	Bottom BAS GUT GK 48 50 A	Bottom-base revos basic made of aluminum, with single locking lever, open, low version, 32-poles
70.325.4828.0	Bottom BAS GUT GP 48 50 A	Bottom-base revos basic made of aluminum, with single locking lever, open, low version, 32-poles
70.331.4835.0	Bottom BAS GUT GM 48 M32 50 A0	Bottom-base revos basic made of aluminum, with single locking lever and cable gland M32 on the left side (IP54), low version, 48-polig
70.331.4835.1	Bottom BAS GUT GM 48 M32 50 A1	Bottom-base revos basic made of aluminum, with single locking lever and threaded hole M32 on the left side, low version, 48-polig
70.331.4835.3	Bottom BAS GUT GM 48 M32 A3	Bottom-base revos basic made of aluminum, with single locking lever and trumpet gland M32 on the left side (IP54), low version, 48-polig
70.341.4835.1	Bottom BAS GUT GS 48 M32 50 A1	Bottom-base revos basic made of aluminum, with single locking lever and threaded hole M32 on the left side, with protective cover, low version, 48-polig
70.341.4835.3	Bottom BAS GUT GS 48 M32 A3	Bottom-base revos basic made of aluminum, with single locking lever and trumpet gland M32 on the left side, with protective cover (IP54), low version, 48-polig
70.344.4835.1	Bottom BAS GUT GR 48 M40 50 A1	Bottom-base revos basic made of aluminum, with single locking lever and threaded hole M40 on the right and the left side, with protective cover, low version, 48-polig
70.510.4853.0	Male insert BAS STF 48 2,5 50	Male insert revos basic, 48-poles, rated current: 16A, rated voltage: 500V, with tin-plated contacts
70.710.4858.0	Male insert BAS STC 48 50	Male insert revos basic, 48-poles, rated current: 16A, rated voltage: 500V, with tin-plated contacts
70.310.4840.0	Male insert BAS STS 48 2,5 50	Male insert revos basic, 48-poles, rated current: 16A, rated voltage: 500V, with tin-plated contacts



Verzögerung sowie Vervielfältigung dieses Dokuments, Verwertung und Mitteilung seines Inhalts sind verboten, soweit nicht ausdrücklich gestattet. The reproduction, distribution and utilization of this document as well as the communication of its contents to others without express authorization is prohibited.

Buchseneinsatz
70.500.4853.0

Zeichnungsnummer
70.500.4853.010W
Buchseneinsatz

07.11.2007
Hoffmann Angelika
M 1:1