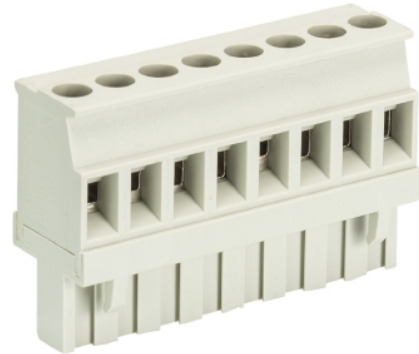


## Data sheet

Commercial Art.No.: 25.325.3553.0

PCB connector 8113 B / 5 VR OB

PCB female connector with screw connection with rising cage clamp system, 5 poles, max. cross section: 2.5 mm<sup>2</sup>, pitch: 5 mm, type of packing: carton, color: grey



|                    |               |
|--------------------|---------------|
| Commercial Art.No. | 25.325.3553.0 |
| EAN                | 4015573183575 |
| Order Unit         | 50            |

Certificates / Approvals



## Technical data

### General

|                                    |                  |
|------------------------------------|------------------|
| Modular spacing                    | 5 mm             |
| Connection type                    | screw connection |
| Soldering process                  | None             |
| Packaging                          | Carton           |
| Number of poles                    | 5                |
| Marking                            | No               |
| Fastening                          | None             |
| Mating direction towards connector | 90°              |

### Technical data

|                          |                     |
|--------------------------|---------------------|
| Nominal cross section    | 2.5 mm <sup>2</sup> |
| Rated current            | 12 A                |
| Overvoltage Category I   | 1000 V              |
| Overvoltage Category II  | 400 V               |
| Overvoltage Category III | 250 V               |
| Rated impulse voltage    | 4 kV                |
| Wire strip length        | 6 mm                |

### Connection Data

|                                     |                      |
|-------------------------------------|----------------------|
| Minimum cross section solid         | 0.14 mm <sup>2</sup> |
| Maximum cross section solid         | 2.5 mm <sup>2</sup>  |
| Minimum cross section fine stranded | 0.14 mm <sup>2</sup> |
| Maximum cross section fine stranded | 2.5 mm <sup>2</sup>  |
| Wire strip length                   | 6 mm                 |

**Technical Data UL/CSA**

|                        |           |
|------------------------|-----------|
| Cross section UL       | 22-12 AWG |
| Voltage UL             | 300 V     |
| Current field wiring   | 15 A      |
| Current factory wiring | 15 A      |
| Cross section CSA      | 22-12 AWG |
| Voltage CSA            | 300 V     |
| Current CSA            | 15 A      |

**Other**

|                             |               |
|-----------------------------|---------------|
| Type of insulation material | Thermoplastic |
| Color                       | Grey          |
| Height                      | 26 mm         |
| Length                      | 25 mm         |
| Depth                       | 12.6 mm       |
| Material attachment screw   | CuSn/Steel    |
| Material contact base       | CuSn          |
| Material contact surface    | Sn            |

**Classification**

|            |          |
|------------|----------|
| ECLASS 11  |          |
| ECLASS 8.1 | 27440402 |
| ETIM 7.0   | EC002637 |
| ETIM 6.0   | EC002637 |
| ETIM 5.0   | EC002637 |
| ETIM 4.0   | EC002637 |

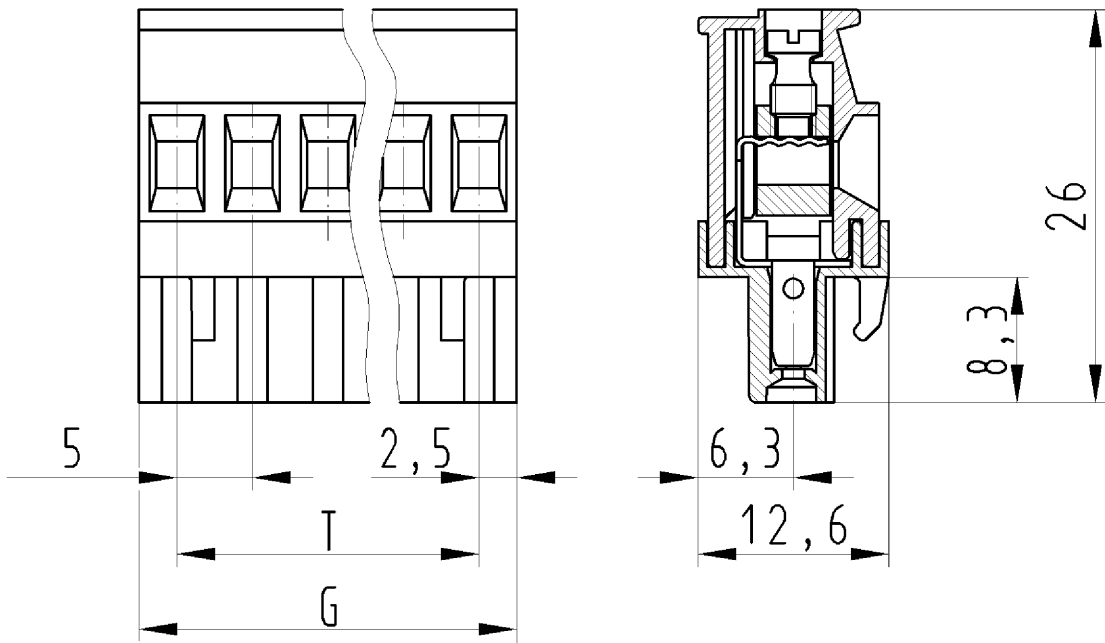
**Product compliance**

|                              |                    |
|------------------------------|--------------------|
| ROHS conformity status       | Compliant/Exempted |
| ROHS exceptions              | III-6(c)           |
| REACH-SVHC conformity status | Duty-To-Declare    |
| REACH-SVHC substances        | Lead               |
| REACH-SVHC CAS numbers       | 7439-92-1          |

**Fits with**

| Commercial Art.No.: | Article-type description:             | Description:   |
|---------------------|---------------------------------------|--|
| 25.332.3553.0       | PCB pin header 8113 S / 5 W OB        | PCB pin header, connection method depends on used socket part , 5 poles, pitch: 5 mm, type of packing: carton, color: grey |
| 99.205.9996.0       | PCB pin header 8113 S / 5 G OB OF     | PCB pin header, connection method depends on used socket part , 5 poles, pitch: 5 mm, type of packing: carton, color: grey |
| 25.330.3553.0       | PCB pin header 8113 S / 5 G OB        | PCB pin header, connection method depends on used socket part , 5 poles, pitch: 5 mm, type of packing: carton, color: grey |
| 25.394.3553.0       | PCB pin header 8113 S / 5 S OB        | PCB pin header, connection method depends on used socket part , 5 poles, pitch: 5 mm, type of packing: carton, color: grey |
| 99.265.9996.0       | PCB pin header 8113 S / 5 W OB OF     | PCB pin header, connection method depends on used socket part , 5 poles, pitch: 5 mm, type of packing: carton, color: grey |
| 27.336.0553.0       | PCB pin header 8113 SEG / 5 / 10 W OB | PCB pin header, 5 poles, pitch: 5 mm, type of packing: carton, color: grey   |

|               |                                       |  |
|---------------|---------------------------------------|--|
| 27.334.0553.0 | PCB pin header 8113 SEG / 5 / 10 G OB | PCB pin header, 5 poles, pitch: 5 mm, type of packing: carton, color: grey |
|---------------|---------------------------------------|--|



für folgende Tabellen-Zchnng.:  
 25.325.5453.F 8113 B/...VR OB

LP. STECKKLEMME  
 25.325.3253.0 10W  
 30.10.2007 DÜT  
 M 2:1