



# Medium Toggle Switch



## Ordering Information

KN3 (C) - 102APE-B2

- 铭牌标记 Nameplate mark
- 铭牌种类 Nameplate options
- 手柄种类 Handle options
- 端子种类 Terminal options
- 规格 Rating
- 电路特性 Circuitry trait
- 刀数 Poles
- "C"型钮子开关 Type "C" Toggle Switch

## Specification

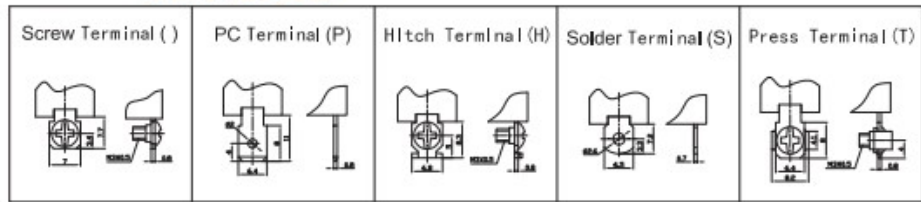
- 1.规格 Rating:( )10A 125VAC;6A 250VAC  
(A)15A 125VAC;10A 250VAC  
(AA)20A 125VAC;15A 250VAC
- 2.接触电阻 Contact Resistance:50mΩ max
- 3.绝缘电阻 Insulation Resistance:500VDC 1000MΩ min
- 4.耐电压 Dielectric Strength:1500VAC, 1Minute
- 5.操作温度 Operating Temperature:-25°C ~ +85°C
- 6.电气寿命 Electrical Life:10,000 Cycles

### Circuitry trait

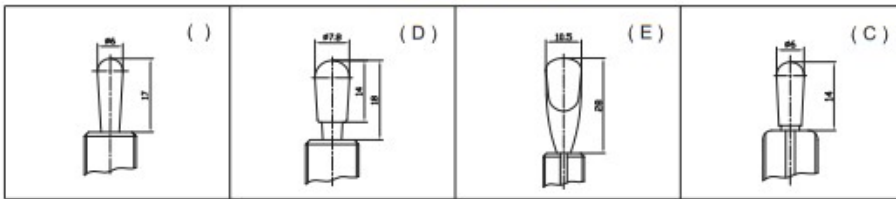
01	ON	-	OFF
02	ON	-	ON
12	ON	-	(ON)
03	ON	OFF	ON
13	ON	OFF	(ON)
23	(ON)	OFF	(ON)

( ) : 回弹指示 Indicates Momentary

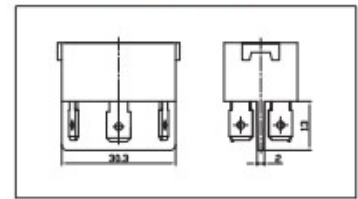
### Terminal options



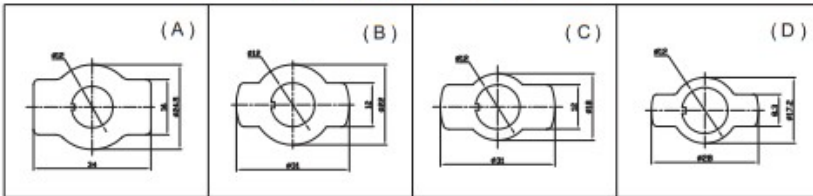
### Handle options



### Special base



### Nameplate options



### Nameplate mark

1	ON - OFF
2	ON - ON
3	ON - OFF - ON

### Base color

材料 Material	基座颜色 Base color	
电木 Bakelite	黑 Black	棕 Brown
聚碳酸酯 PC	红 Red	
三聚氰胺 Melamine	蓝 Blue	

### Water proof cap

