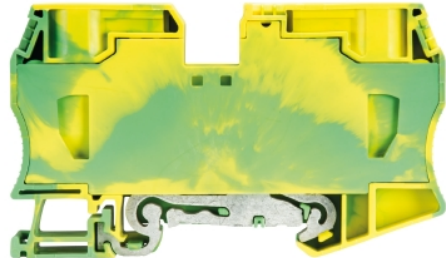


## Data sheet

Commercial Art.No.: 56.735.9053.0

Earth terminal WKF 35 SL/35

Ground terminal with tension spring connection for mounting on TS 35, nominal cross section: 35 mm<sup>2</sup>, width: 16 mm, color: Green-yellow



Commercial Art.No.	56.735.9053.0
EAN	4015573732230
Order Unit	10

Certificates / Approvals



**ATEX**

## Technical data

### General

Nominal cross section	35 mm <sup>2</sup>
Color	Green/yellow
Number of levels	1
Number of clamp positions per level	2
Width/grid dimension	16 mm
Insulating housing	PA666
Inflammability class of insulation material acc. with UL94	V0
Explosion-tested version "Ex e"	yes
Mounting method	DIN rail (top hat rail) 35/7.5 mm
Terminal blocks for electrical installations	No

### Technical data

Rated impulse voltage	8 kV
Pollution degree	3
Closing plate required	No
Type of insulation material	Thermoplastic
Length	99.9 mm

### Connection Data

Connection type 1	spring clamp connection
Connection type 2	spring clamp connection
Minimum cross section solid	2.5 mm <sup>2</sup>
Maximum cross section solid	10 mm <sup>2</sup>
Minimum cross section fine stranded	2.5 mm <sup>2</sup>
Maximum cross section fine stranded	35 mm <sup>2</sup>
Minimum cross section stranded	16 mm <sup>2</sup>
Maximum cross section stranded	35 mm <sup>2</sup>

Wire strip length	25 mm
-------------------	-------

**Technical Data UL/CSA**

Cross section UL	12-2 AWG
Cross section CSA	12-2 AWG

**Classification**

ECLASS 11	
ECLASS 8.1	27141141
ETIM 7.0	EC000901
ETIM 6.0	EC000901
ETIM 5.0	EC000901
ETIM 4.0	EC000901
ETIM 3.0	EC000901

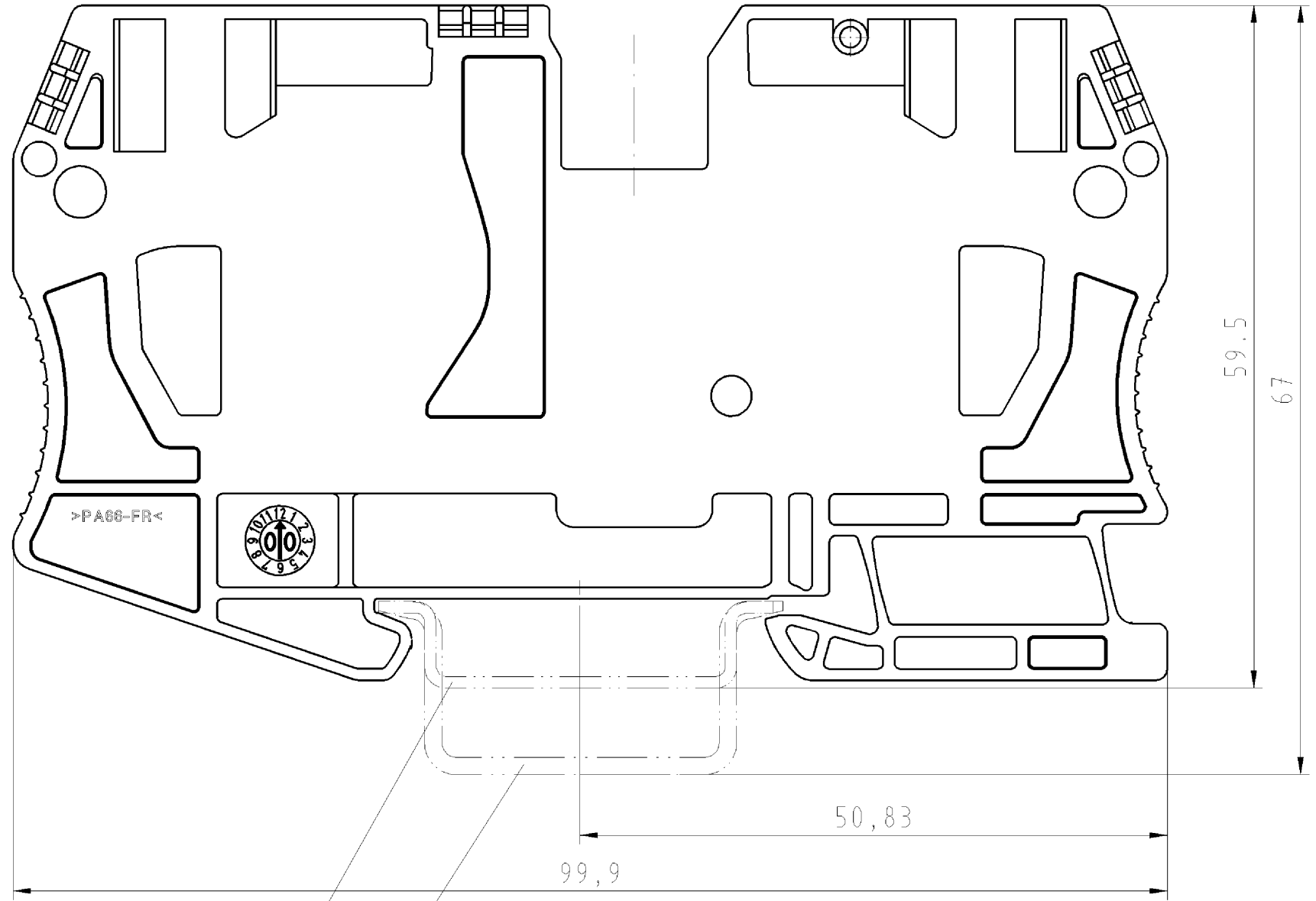
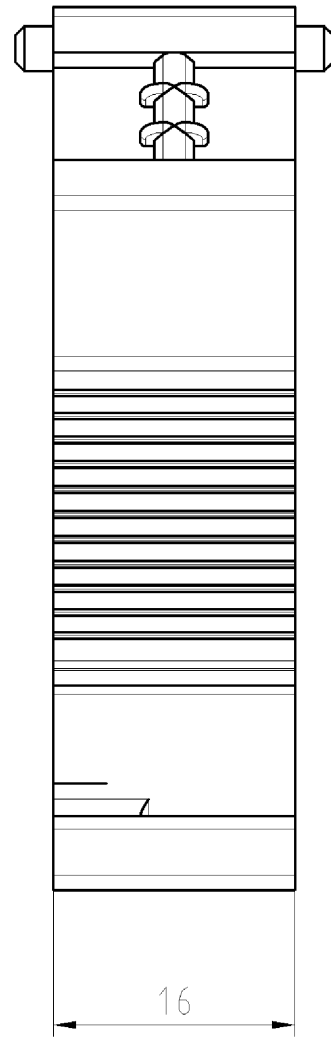
**Product compliance**

ROHS conformity status	Compliant
REACH-SVHC conformity status	Compliant

**Accessories**

Commercial Art.No.:	Article-type description:	Description:
98.300.0000.0	Mounting rail TS 35x7,5 UNPERF - l:2000mm	Mounting rail TS 35, unslotted, size 7,5 mm, length 2 m, material steel. galv. zinc-plated and dichromated
98.300.1000.0	Mounting rail TS 35x7,5 PERF 15mm - l:2000mm	Mounting rail TS 35, slotted, size 7,5 mm, length 2 m, material steel. galv. zinc-plated and dichromated
98.300.1900.0	Mounting rail TS 35x7,5 PERF 25mm - l:2000mm	Mounting rail TS 35, slotted, size 7,5 mm, length 2 m, material steel. galv. zinc-plated and dichromated
98.360.0000.0	Mounting rail TS 35x15-2,3 UNPERF - l:2000mm	Mounting rail TS 35, unslotted, size 15 mm, length 2 m, material steel. galv. zinc-plated and dichromated
98.360.0004.0	Mounting rail TS 35x15-2,3 UNPERF FZN - l:2000mm	Mounting rail TS 35, unslotted, size 15 mm, length 2 m, material steel, hot galvanized
98.370.0000.0	Mounting rail TS 35x15 UNPERF - l:2000mm	Mounting rail TS 35, unslotted, size 15 mm, length 2 m, material steel. galv. zinc-plated and dichromated
98.370.1000.0	Mounting rail TS 35x15 PERF 15mm - l:2000mm	Mounting rail TS 35, slotted, size 15 mm, length 2 m, material steel. galv. zinc-plated and dichromated
98.380.0000.0	Mounting rail TS 35x15-2,3 UNPERF CU - l:2000mm	Mounting rail TS 35, unslotted, size 15 mm, length 2 m, material E copper
04.343.9253.8	Warning cover ADF 35/5	Cover with warning symbol for DIN rail terminal blocks type WKF ...
Z7.285.6227.0	Jumper bar IVB WKF 35-2	Cross connector, insulated for DIN rail terminal blocks type WKF..., 2 - pole
98.300.1800.0	Mounting rail TS 35x7,5 PERF 18mm - l:2000mm	Mounting rail TS 35, slotted, size 7,5 mm, length 2 m, material steel. galv. zinc-plated and dichromated
04.242.8053.0	Marking tag strips 9705 A / 8 / 10	Marking tag strips for DIN rail terminal blocks type 9700 A / 8..., 10 tags per strip, color: blue, unmarked, markable with Wieplot plotter-system

○ Diese Maße werden bei Abnahme besonders geprüft  
 □ Ausschließlich Prüfmaße  
 ○ Mitz./E. gekennzeichnete Maße sind nur für interne Zwecke gültig



Tragschiene EN 60715 - 35 x 15  
 mounting rail EN 60715 - 35 x 15

Tragschiene EN 60715 - 35 x 7,5  
 mounting rail EN 60715 - 35 x 7,5

Technische Daten  
 Technical Data

	VDE	UL	CSA
Bemessungsspannung V rated voltage			
Bemessungsstrom A rated current			
Anschlußbereich max. mm <sup>2</sup> /AWG connection range	35	2	2
Bemessungsquerschnitt 35mm <sup>2</sup> rated cross-section 35mm <sup>2</sup>			
Brennbarkeitsklasse UL 94 V-0 flamability rating UL 94 V-0			
Verschmutzungsgrad 3/Überspannungskategorie III pollution degree 3/overvoltage category III			

weitere Daten siehe Katalog  
 additional data are available from the catalogue

Freitoleranz nach		CAD - Zeichnung, keine manuellen Änderungen			1. Verwendung: -		Bl.: 1 von 1	
	/	Maßstab	PA 6.6	2004	Tag	Name	Zeichnung Nr.	
	/	2:1	grün RAL 6021 /gelb RAL 1018	Entworfen	1. März	Postler F.	56.735.9053.0 01K	
	/		green RAL 6021 /yellow RAL 1018	Geprüft	-	-		
	/	Vol.	mm <sup>3</sup>	Off.	mm <sup>3</sup>	Normgepr.	Ersatz für: -	
	/			<b>Typ</b> WKF 35 SL/35		Benennung <b>SCHUTZLEITERKLEMME</b> ground wire clamp fasis PRO 35mm <sup>2</sup>		
Buchstabe	Datum / Blatt							
Änderung		Elektrische Verbindungen						

Weitergabe sowie Vervielfältigung dieses Dokuments, Verwertung und Mitteilung seines Inhalts sind verboten, soweit nicht ausdrücklich gestattet.  
 The reproduction, distribution and utilization of this document as well as the communication of its contents to others without express authorization is prohibited.