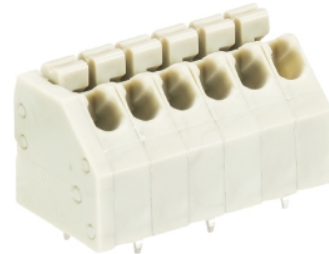


## Data sheet

Commercial Art.No.: 27.010.3453.0

Printed circuit board terminal 8562 N / 4 OB HW

PCB terminal, 4 poles, with solder pin (3.5mm), pitch: 3.5 mm, type of packing: carton, color: grey



|                    |               |
|--------------------|---------------|
| Commercial Art.No. | 27.010.3453.0 |
| EAN                | 4015573872981 |
| Order Unit         | 50            |

Certificates / Approvals



## Technical data

### General

|                            |                         |
|----------------------------|-------------------------|
| Modular spacing            | 3.5 mm                  |
| Connection type            | spring clamp connection |
| Soldering process          | Wave soldering          |
| Packaging                  | Carton                  |
| Number of poles            | 4                       |
| Conductor to circuit board | 180°                    |
| Number of levels           | 1                       |
| Integrated test socket     | No                      |
| Insulation plate           | yes                     |
| Retaining pins             | No                      |
| Marking                    | No                      |

### Technical data

|                          |                     |
|--------------------------|---------------------|
| Nominal cross section    | 1.5 mm <sup>2</sup> |
| Rated current            | 2 A                 |
| Overvoltage Category I   | 1000 V              |
| Overvoltage Category II  | 690 V               |
| Overvoltage Category III | 250 V               |
| Rated impulse voltage    | 4 kV                |
| Wire strip length        | 8 mm                |

### Connection Data

|                                     |                     |
|-------------------------------------|---------------------|
| Minimum cross section solid         | 0.5 mm <sup>2</sup> |
| Maximum cross section solid         | 1.5 mm <sup>2</sup> |
| Minimum cross section fine stranded | 0.5 mm <sup>2</sup> |
| Maximum cross section fine stranded | 1.5 mm <sup>2</sup> |

|                   |      |
|-------------------|------|
| Wire strip length | 8 mm |
|-------------------|------|

**Technical Data UL/CSA**

|                        |           |
|------------------------|-----------|
| Cross section UL       | 16-20 AWG |
| Voltage UL             | 300 V     |
| Current field wiring   | 2 A       |
| Current factory wiring | 2 A       |
| Cross section CSA      | 14-20 AWG |
| Voltage CSA            | 300 V     |
| Current CSA            | 2 A       |

**Other**

|                             |               |
|-----------------------------|---------------|
| Type of insulation material | Thermoplastic |
| Color                       | Grey          |
| Height                      | 12.8 mm       |
| Length                      | 14 mm         |
| Depth                       | 12 mm         |
| Material attachment screw   | None          |
| Material contact base       | CuSn          |
| Material contact surface    | Sn            |

**Classification**

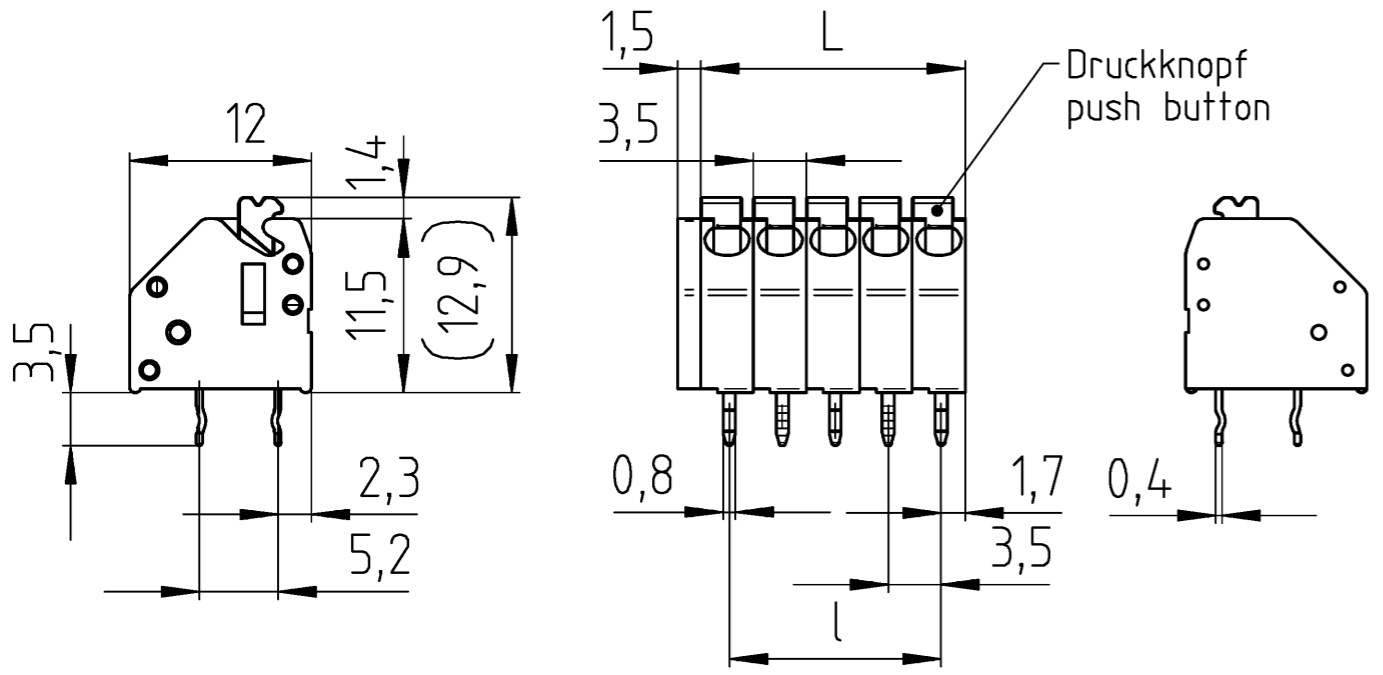
|            |          |
|------------|----------|
| ECLASS 11  |          |
| ECLASS 8.1 | 27440401 |
| ETIM 7.0   | EC002643 |
| ETIM 6.0   | EC002643 |
| ETIM 5.0   | EC002643 |
| ETIM 4.0   | EC002643 |

**Product compliance**

|                              |           |
|------------------------------|-----------|
| ROHS conformity status       | Compliant |
| REACH-SVHC conformity status | Compliant |

A  
 Weitergabe sowie Vervielfältigung dieses Dokuments, Verwertung und Mitteilung seines Inhalts sind verboten, soweit nicht ausdrücklich gestattet. The reproduction, distribution and utilization of this document as well as the communication of its contents to others without express authorization is prohibited.

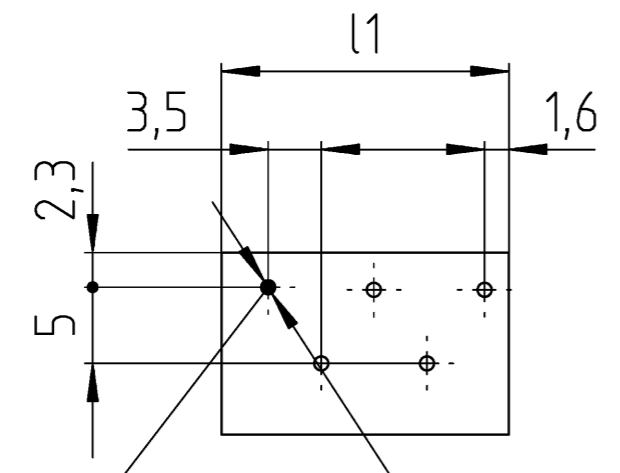
Gezeichnete Ausführung: 27.010.3553.0  
 drawn version:



C  
 These dimensions will be especially checked at delivery  
 Only inspection dimensions  
 With /E marked dimensions are only valid for internal use

D  
 Diese Maße werden bei Abnahme besonders geprüft  
 Ausschließlich Prüfmäße  
 Mit /E gekennzeichnete Maße sind nur für interne Zwecke gültig

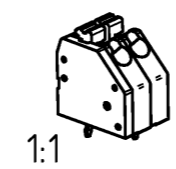
Lochbild  
 PCB layout



F  
 erster Pin immer hinten  
 (gültig für alle Polzahlen)  
 first pin always in back side  
 (valid for all poles)

| Technische Daten<br>technical data                                                                 |            |           |            |
|----------------------------------------------------------------------------------------------------|------------|-----------|------------|
| Bemessungsspannung V<br>rated voltage                                                              | VDE<br>250 | UL<br>300 | CSA<br>300 |
| Bemessungsstrom A<br>rated current                                                                 | 2          | 2         | 2          |
| Anschlussbereich max. mm <sup>2</sup> /AWG<br>connection range                                     | 1,5        | 16        | 16         |
| Verschmutzungsgrad 3 / Überspannungskategorie III<br>pollution degree 3 / overvoltage category III |            |           |            |
| Brennbarkeitsklasse UL 94 - V0<br>flamability rating                                               |            |           |            |
| Material : PA666 kieselgrau, ähnlich RAL 7032<br>material : PA666 pebble grey similar to RAL 7032  |            |           |            |

| Teilenummer<br>part number | Typ<br>type    | Polzahl<br>poles | l    | L    | l1   |
|----------------------------|----------------|------------------|------|------|------|
| 27.010.3253.0              | 8562N/ 2 OB HW | 2                | 3,5  | 7    | 8,5  |
| 27.010.3353.0              | 8562N/ 3 OB HW | 3                | 7    | 10,5 | 12   |
| 27.010.3453.0              | 8562N/ 4 OB HW | 4                | 10,5 | 14   | 15,5 |
| 27.010.3553.0              | 8562N/ 5 OB HW | 5                | 14   | 17,5 | 19   |
| 27.010.3653.0              | 8562N/ 6 OB HW | 6                | 17,5 | 21   | 22,5 |
| 27.010.3753.0              | 8562N/ 7 OB HW | 7                | 21   | 24,5 | 26   |
| 27.010.3853.0              | 8562N/ 8 OB HW | 8                | 24,5 | 28   | 29,5 |
| 27.010.3953.0              | 8562N/ 9 OB HW | 9                | 28   | 31,5 | 33   |
| 27.010.4053.0              | 8562N/10 OB HW | 10               | 31,5 | 35   | 36,5 |
| 27.010.4153.0              | 8562N/11 OB HW | 11               | 35   | 38,5 | 40   |
| 27.010.4253.0              | 8562N/12 OB HW | 12               | 38,5 | 42   | 43,5 |
| 27.010.4353.0              | 8562N/13 OB HW | 13               | 42   | 45,5 | 47   |
| 27.010.4453.0              | 8562N/14 OB HW | 14               | 45,5 | 49   | 50,5 |
| 27.010.4553.0              | 8562N/15 OB HW | 15               | 49   | 52,5 | 54   |
| 27.010.4653.0              | 8562N/16 OB HW | 16               | 52,5 | 56   | 57,5 |
| 27.010.4753.0              | 8562N/17 OB HW | 17               | 56   | 59,5 | 61   |
| 27.010.4853.0              | 8562N/18 OB HW | 18               | 59,5 | 63   | 64,5 |
| 27.010.4953.0              | 8562N/19 OB HW | 19               | 63   | 66,5 | 68   |
| 27.010.5053.0              | 8562N/20 OB HW | 20               | 66,5 | 70   | 71,5 |
| 27.010.5153.0              | 8562N/21 OB HW | 21               | 70   | 73,5 | 75   |
| 27.010.5253.0              | 8562N/22 OB HW | 22               | 73,5 | 77   | 78,5 |
| 27.010.5353.0              | 8562N/23 OB HW | 23               | 77   | 80,5 | 82   |
| 27.010.5453.0              | 8562N/24 OB HW | 24               | 80,5 | 84   | 85,5 |



Weitere Daten siehe KATALOG oder eKatalog  
 additional data see CATALOG or eCATALOG  
[www.wieland-electric.com](http://www.wieland-electric.com)  
[eshop.wieland-electric.com](http://eshop.wieland-electric.com)

Tolerierung Size ISO 14405 © / Tolerance system Size ISO 14405 ©. ja/yes  Stoffverbots- und Deklarationsliste nach WN 5020.010 ist einzuhalten.  
 (This ISO-standard describes the envelope principle. According to the envelope principle the deviations of form and parallelism are limited by the size tolerances). Conformity with Wieland document WN 5020.010 e (list of prohibited / declarable hazardous substances) to be declared!

Freitoleranz nach General tolerance CAD - Zeichnung, keine manuellen Änderungen CAD - drawing, no manual modifications allowed 1 Verwendung: First Use: Blatt: 1 von 1 Sheet: 1 of 1

|                                                |            |                                                                                                  |                                   |       |
|------------------------------------------------|------------|--------------------------------------------------------------------------------------------------|-----------------------------------|-------|
| Werkstoff / Material                           | Tag/Date   | Name                                                                                             | Zeichnung Nr. / Drawing No.       | Index |
| gezeichnet / drawn                             | 30.06.2021 | Schmitt J.                                                                                       |                                   |       |
| Maßstab / Scale                                | 2:1        |                                                                                                  | T 27.010.3253.0 13K               | -     |
| Elektronische Freigabe / Electronic Release    |            |                                                                                                  |                                   |       |
| Vol. mm <sup>3</sup> Dfl./Srf. mm <sup>2</sup> |            |                                                                                                  | Maße in mm / Dimensions are in mm |       |
| Ersatz für / Replacement for:                  |            | Type                                                                                             | Benennung/Title                   |       |
|                                                |            | 8562N/ OB HW                                                                                     | LP.KLEMME                         |       |
| Index Datum / Blatt / Date / Sheet             |            | PCB-Terminal pitch 3,5mm ; screwless 45°-wire entry<br>Rastmaß 3,5mm schraublos 45° Kabeleingang |                                   |       |
| Änderung / Revision                            |            | wieland                                                                                          |                                   |       |