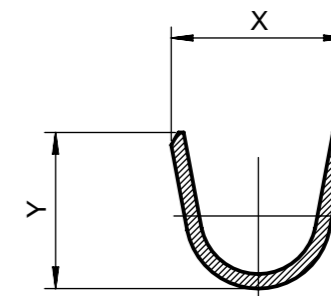


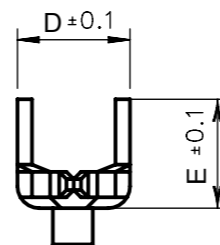
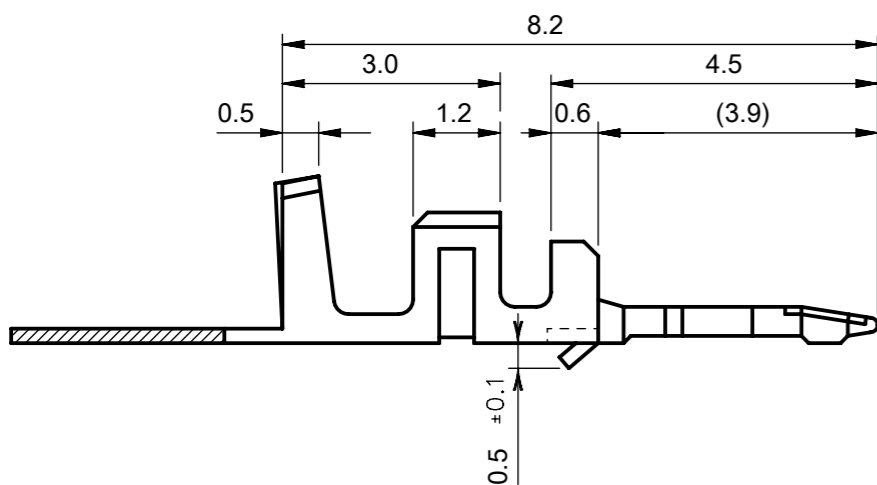
SECTION A-A'



SECTION B-B'

NOTE

1. MATERIAL : BRASS
  2. FINISHES
    - 1) PRE-PLATING : 0.9 MICROMETER TIN(Sn) MINIMUM OVER  
0.5 MICROMETER MINIMUM COPPER OVERALL
    - 2) POST-PLATING : 1~3 MICROMETER TIN(Sn) OVER  
1 MICROMETER MINIMUM COPPER OVERALL
  3. WIRE STRIP LENGTH : 2.0 ~ 2.5MM
  4. TERMINAL INSERTION FORCE: 1.0kgf MAX.
  5. TERMINAL RETENTION FORCE: 1.0kgf MIN.
  6. USED WITH HOUSING : 35022, 35023, 35516
  7. WIRE CRIMPING WIDTH : CONDUCTOR BARREL : 1.2mm  
INSULATION BARREL : 1.3mm
  - Ⓕ 8. APPLICABLE WIRE RANGE : AWG #22~#28 (SEE TABLE)
  - Ⓕ 9. APPLICABLE INSULATION RANGE :  $\varnothing 1.5\sim 1.9$ mm MAX. (SEE TABLE)
  10. PCB HOLE SIZE(Ref.) : 2.0 PITCH -  $\varnothing 0.8\pm 0.05$   
2.5 PITCH -  $\varnothing 1.0\pm 0.05$
- DETAIL SIZE REFERS 35022 & 35023 DRAWINGS.



DESCRIPTION	Ⓕ WIRE RANGE	Ⓕ ENG. NO.	DIMENSION							PLATING	PACKING
			A	B	C	D	E	X	Y		
2.5MM B-IN TYPE	AWG #22~28 (INS. DIA : $\varnothing 1.9$ mm MAX.)	35044-9104	0.70	0.68	1.05	1.55	1.50	2.4	2.15	PRE-PLATING	GENERAL PACKING
2.0MM B-IN TYPE	AWG #24~28 (INS. DIA : $\varnothing 1.5$ mm MAX.)	35044-9102	0.65	0.65	0.85	1.40	1.40	2.4	2.15	PRE-PLATING	GENERAL PACKING

THIS DRAWING CONTAINS INFORMATION THAT IS PROPRIETARY TO MOLEX ELECTRONIC TECHNOLOGIES, LLC AND SHOULD NOT BE USED WITHOUT WRITTEN PERMISSION

DIMENSION UNITS <b>mm</b>	SCALE <b>10:1</b>	CURRENT REV DESC: REMOVED OBSOLETE PART NUMBER AS PER PCN#509450.	<b>molex</b>			
GENERAL TOLERANCES (UNLESS SPECIFIED)						2.0/2.5 B-IN TERL
ANGULAR TOL $\pm 1.0^\circ$			PRODUCT CUSTOMER DRAWING			
4 PLACES $\pm$		EC NO: 694111	DOCUMENT NUMBER			
3 PLACES $\pm$		DRWN: SANTHN 2022/02/07	DOC TYPE			
2 PLACES $\pm 0.15$		CHK'D: GGA 2022/03/31	DOC PART			
1 PLACE $\pm 0.2$		APPR: GGA 2022/03/31	REVISION			
0 PLACES $\pm$		INITIAL REVISION:	SD-35044-001			
		DRWN: KSKIM 2003/06/09	PSD	001	F3	
		APPR: CHANGWOOLEE 2003/06/10				
DRAFT WHERE APPLICABLE MUST REMAIN WITHIN DIMENSIONS	THIRD ANGLE PROJECTION	DRAWING	SERIES	MATERIAL NUMBER	CUSTOMER	SHEET NUMBER
		A3-SIZE	35044	SEE TABLE	GENERAL MARKET	1 OF 1