

SPECIFICATIONS

Current rating : 2A AC,DC

Voltage rating : 250V AC,DC

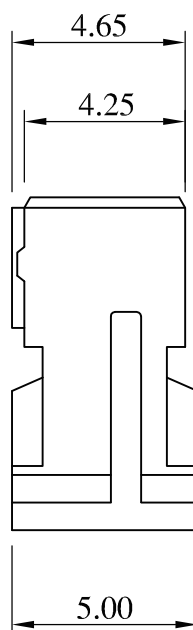
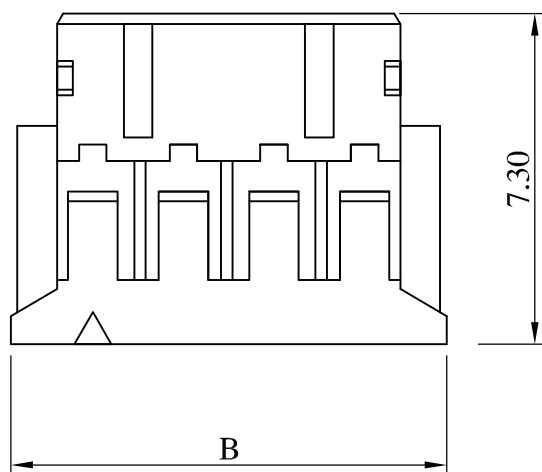
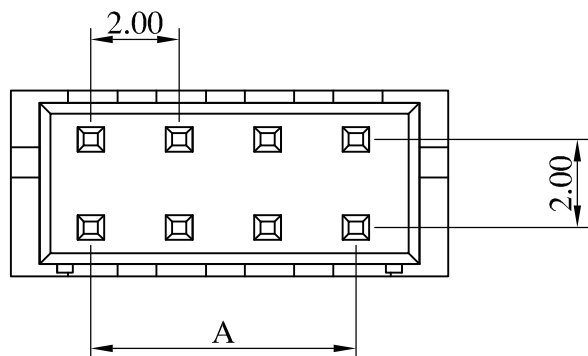
Temperature range : -25°C to +85 °C

Contact resistance : 20mΩ Max.

Insulation resistance : 1000MΩ Min.

Withstanding voltage : 800V AC/minute

Material : Nylon 66, UL94V-0



Ordering Information & Dimensions

Poles	Dimension (mm)		Part No.	Note.
	A	B		
2x2	2.00	5.90	PHD 04F	
2x3	4.00	7.90	PHD 06F	
2x4	6.00	9.90	PHD 08F	
2x5	8.00	11.90	PHD 10F	
2x6	10.00	13.90	PHD 12F	
2x7	12.00	15.90	PHD 14F	
2x8	14.00	17.90	PHD 16F	
2x9	16.00	19.90	PHD 18F	
2x10	18.00	21.90	PHD 20F	
2x11	20.00	23.90	PHD 22F	
2x12	22.00	25.90	PHD 24F	
2x13	24.00	27.90	PHD 26F	
2x14	26.00	29.90	PHD 28F	
2x15	28.00	31.90	PHD 30F	
2x16	30.00	33.90	PHD 32F	
2x17	32.00	35.90	PHD 34F	
2x20	38.00	41.90	PHD 40F	

RoHS Compliant

TOLERANCES ARE

X, ±
 .X ±
 .XX ±
 .XXX ±
 ANG ±