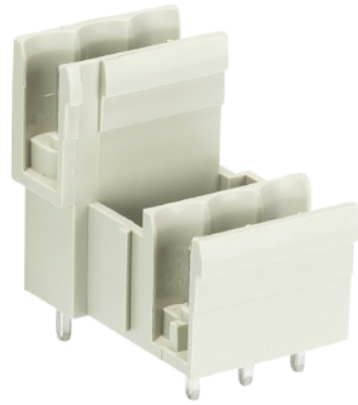


## Data sheet

Commercial Art.No.: 25.354.3353.0

PCB pin header 8213 S E / 3 G OB

PCB pin header, connection method depends on used socket part , 3 poles, pitch:  
5.08 mm, type of packing: carton, color: grey



|                    |               |
|--------------------|---------------|
| Commercial Art.No. | 25.354.3353.0 |
| EAN                | 4015573194960 |
| Order Unit         | 100           |

Certificates / Approvals



## Technical data

### General

|  |                |
|--|----------------|
| Modular spacing                          | 5.08 mm        |
| Soldering process                        | Wave soldering |
| Packaging                                | Carton         |
| Number of poles                          | 3              |
| Number of levels                         | 2              |
| Marking                                  | No             |
| Fastening                                | None           |
| Mating direction towards (circuit) board | 90°            |

### Technical data

|                          |        |
|--------------------------|--------|
| Rated current            | 10 A   |
| Overvoltage Category I   | 1000 V |
| Overvoltage Category II  | 400 V  |
| Overvoltage Category III | 250 V  |
| Rated impulse voltage    | 4 kV   |

### Technical Data UL/CSA

|                        |       |
|------------------------|-------|
| Voltage UL             | 300 V |
| Current field wiring   | 15 A  |
| Current factory wiring | 15 A  |
| Voltage CSA            | 300 V |

|             |      |
|-------------|------|
| Current CSA | 10 A |
|-------------|------|

#### Other

|                             |               |
|-----------------------------|---------------|
| Type of insulation material | Thermoplastic |
| Color                       | Grey          |
| Height                      | 22 mm         |
| Length                      | 17.78 mm      |
| Depth                       | 23.3 mm       |
| Material contact base       | CuZn          |
| Material contact surface    | Sn            |

#### Classification

|            |          |
|------------|----------|
| ECLASS 8.1 | 27440402 |
| ETIM 7.0   | EC002637 |
| ETIM 6.0   | EC002637 |
| ETIM 5.0   | EC002637 |
| ETIM 4.0   | EC002637 |

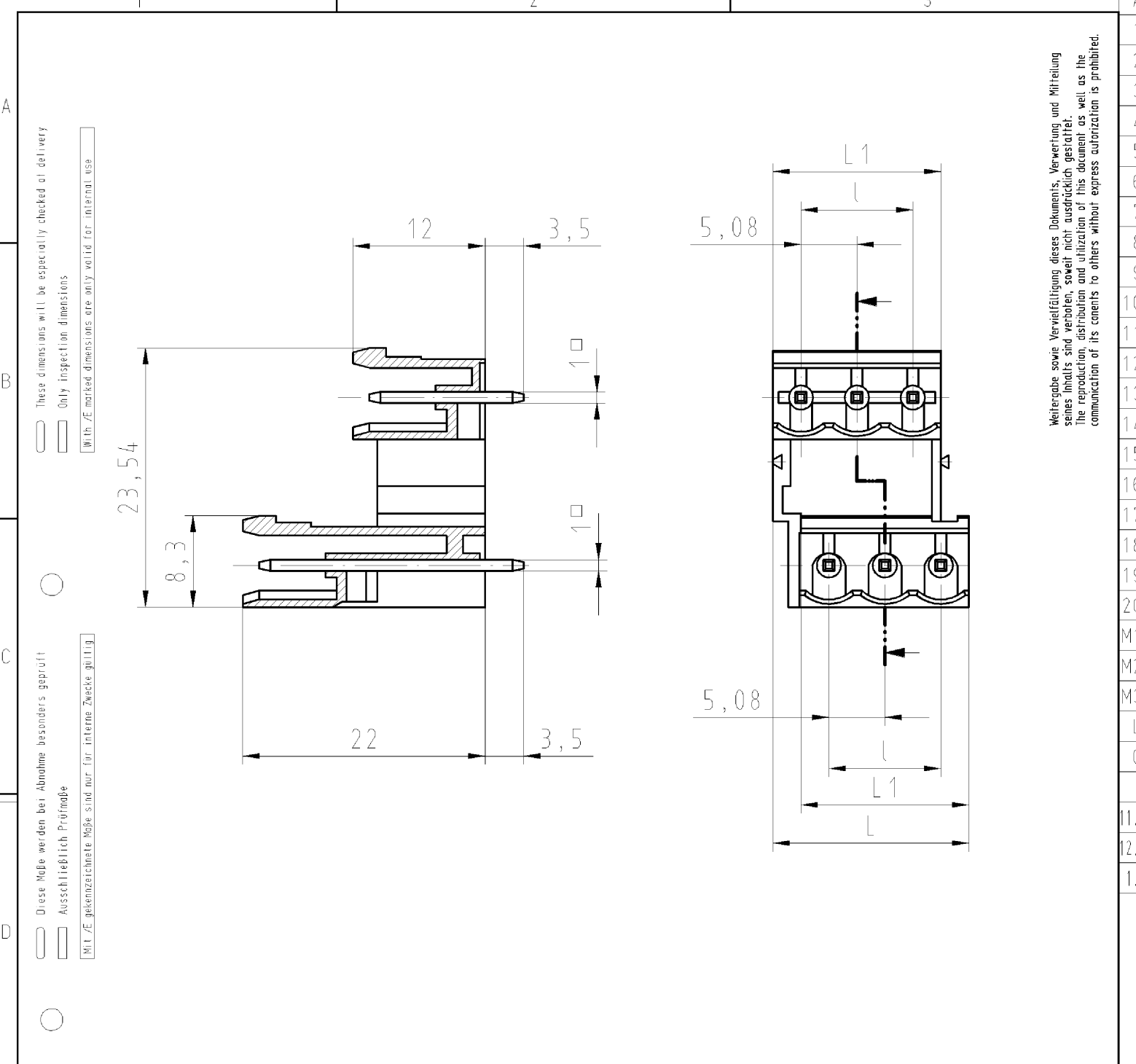
#### Product compliance

|                              |           |
|------------------------------|-----------|
| ROHS conformity status       | Compliant |
| REACH-SVHC conformity status | Compliant |

#### Fits with

| Commercial Art.No.: | Article-type description:       | Description:   |
|---------------------|---------------------------------|--|
| 25.240.3353.0       | PCB connector 8213 B / 3 TOP OB | PCB female connector with front/top screw connection, 3 poles, max. cross section: 2.5 mm <sup>2</sup> , pitch: 5.08 mm, type of packing: carton, color: grey                                      |
| 25.240.0353.0       | PCB connector 8213 B / 3 TOP    | PCB female connector with front/top screw connection, 3 poles, printed version, max. cross section: 2.5 mm <sup>2</sup> , pitch: 5.08 mm, type of packing: carton, color: grey                     |
| 25.340.3353.0       | PCB connector 8213 B / 3 OB     | PCB female connector with screw connection with rising cage clamp system, 3 poles, max. cross section: 2.5 mm <sup>2</sup> , pitch: 5.08 mm, type of packing: carton, color: grey                  |
| 25.340.0353.0       | PCB connector 8213 B / 3        | PCB female connector with screw connection with rising cage clamp system, 3 poles, printed version, max. cross section: 2.5 mm <sup>2</sup> , pitch: 5.08 mm, type of packing: carton, color: grey |
| 25.345.3353.0       | PCB connector 8213 B / 3 VR OB  | PCB female connector with screw connection with rising cage clamp system, 3 poles, max. cross section: 2.5 mm <sup>2</sup> , pitch: 5.08 mm, type of packing: carton, color: grey                  |
| 25.345.0353.0       | PCB connector 8213 B / 3 VR     | PCB female connector with screw connection with rising cage clamp system, 3 poles, printed version, max. cross section: 2.5 mm <sup>2</sup> , pitch: 5.08 mm, type of packing: carton, color: grey |
| 25.346.3353.0       | PCB connector 8213 B / 3 VL OB  | PCB female connector with screw connection with rising cage clamp system, 3 poles, max. cross section: 2.5 mm <sup>2</sup> , pitch: 5.08 mm, type of packing: carton, color: grey                  |
| 25.346.0353.0       | PCB connector 8213 B / 3 VL     | PCB female connector with screw connection with rising cage clamp system, 3 poles, printed version, max. cross section: 2.5 mm <sup>2</sup> , pitch: 5.08 mm, type of packing: carton, color: grey |
| 27.341.3353.0       | PCB connector 8213 B / 3 S OB   | PCB female connector, 3 poles, pitch: 5.08 mm, type of packing: carton,color: grey   |

|               |                                   |   |
|---------------|-----------------------------------|---|
| 25.840.3353.0 | PCB connector 8213 BFK / 3 TOP OB | PCB female connector with tension spring connection, 3 poles, max. cross section: 2.5 mm <sup>2</sup> , pitch: 5.08 mm, type of packing: carton, color: grey                  |
| 25.840.0353.0 | PCB connector 8213 BFK / 3 TOP    | PCB female connector with tension spring connection, 3 poles, printed version, max. cross section: 2.5 mm <sup>2</sup> , pitch: 5.08 mm, type of packing: carton, color: grey |



Weitergabe sowie Vervielfältigung dieses Dokuments, Verwertung und Mitteilung seines Inhalts sind verboten, soweit nicht ausdrücklich gestattet. Die Reproduktion, Distribution und Nutzung dieses Dokumentes sowie die Kommunikation von dessen Inhalten ohne schriftliche Genehmigung ist untersagt.

| Teile - Nr.<br>part - no. | Typ<br>type     | Polzahl<br>poles | L     | L1    | l     |
|---------------------------|-----------------|------------------|-------|-------|-------|
| 25.354.3253.0             | 8213 SE/ 2 G OB | 2                | 12,7  | 10,16 | 5,08  |
| 25.354.3353.0             | 8213 SE/ 3 G OB | 3                | 17,78 | 15,24 | 10,16 |

Tolerierung nach DIN 7167/Tolerance system acc. to DIN 7167. (This DIN-standard describes the envelope principle. According to the envelope principle the deviations of form and parallelism are limited by the size tolerances). ja/yes  Stoffverbots- und Deklarationsliste nach UU-TQM-05/03 ist einzuhalten. Conformity with Wieland document UU-TQM-05/03 (list of prohibited / declarable hazardous substances) to be declared!

Freitoleranz nach General tolerance CAD - Zeichnung, keine manuellen Änderungen CAD - drawing, no manual modifications allowed 1.Verwendung: First Use: Blatt: 1 von 1 Sheet: 1 of 1

|   |  |                               |  |  |                                 |                   |       |
|---|--|-------------------------------|--|--|---------------------------------|-------------------|-------|
| Werkstoff/Material                              |  | 2007                          | Tag/Date                               | Name   | Zeichnung Nr./Drawing No.       |                   | Index |
|   |  | gezeichnet<br>drawn           | 22.03.                                 | Treschan   | T                               | 25.354.3353.0 01K |       |
|   |  | geprüft<br>checked            | -                                      | -  |                                 |                   |       |
|   |  | Normgepr.<br>Stand. check     | -                                      | -  |                                 |                   |       |
| Vol. mm <sup>3</sup> Of1./Surf. mm <sup>2</sup> |  | Ersatz für/Replacement for: - |  |  | Maße in mm/Dimensions are in mm |                   |       |
|   |  | Type                          | Benennung/Title                        |  |                                 |                   |       |
|   |  | Typ                           | double-deck-header<br>ETAGENSTIFTLISTE |  |                                 |                   |       |
| Änderung/Revision                               |  | 8213 SE / 2-3 G OB            |  | passend für 8213 B.. gerade ; ohne Codierung<br>suitable for 8213B.. straight ; without coding |                                 |                   |       |

253543353001K\_4 CADW1044 treschan 2007-03-22T12:50:17 1.000