

SPECIFICATIONS

Electrical

Current Rating: 2A AC, DC

Voltage Rating: 100V AC/ max.

Operating Temp.: -25°C ~ +85°C

Insulation Resistance: 1000MΩ/ min.

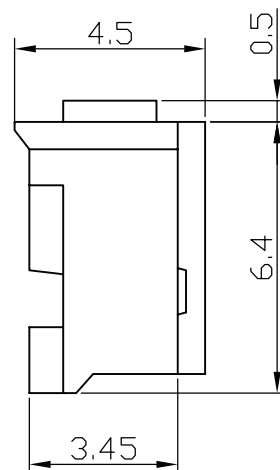
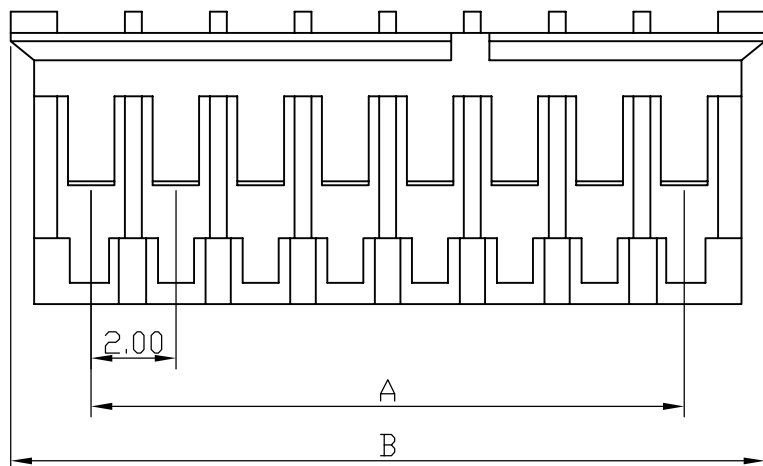
Dielectric Withstanding Voltage: 800V AC/ min.

Contact Resistance: 20mΩ/ max.

Material

Material: Nylon 66, UL94V-0

RoHS Compliant



Poles	Dimension mm (in.)		Part No.	Note.
	A	B		
2	2.0(0.079)	5.8(0.228)	PH 02F	
3	4.0(0.157)	7.8(0.307)	PH 03F	
4	6.0(0.236)	9.8(0.386)	PH 04F	
5	8.0(0.315)	11.8(0.465)	PH 05F	
6	10.0(0.394)	13.8(0.543)	PH 06F	
7	12.0(0.472)	15.8(0.622)	PH 07F	
8	14.0(0.551)	17.8(0.701)	PH 08F	
9	16.0(0.630)	19.8(0.780)	PH 09F	
10	18.0(0.709)	21.8(0.858)	PH 10F	
11	20.0(0.787)	23.8(0.937)	PH 11F	
12	22.0(0.886)	25.8(1.016)	PH 12F	
13	24.0(0.945)	27.8(1.094)	PH 13F	
14	26.0(1.024)	29.8(1.173)	PH 14F	
15	28.0(1.102)	31.8(1.252)	PH 15F	
16	30.0(1.181)	33.8(1.331)	PH 16F	

TOLERANCES ARE

X. ±
 .X ± 0.30
 .XX ± 0.20
 .XXX ±
 ANG ±

DESCRIPTION: 2.0mm Wire-to-Board Housing