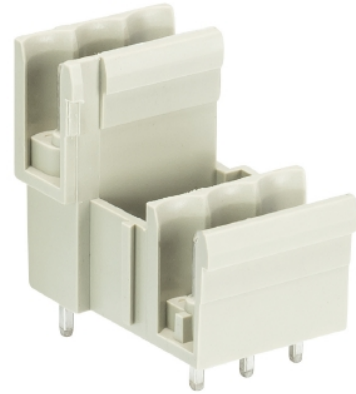


Data sheet

Commercial Art.No.: 25.334.3253.0

PCB pin header 8113 S E / 2 G OB

PCB pin header, connection method depends on used socket part , 2 poles, pitch: 5 mm, type of packing: carton, color: grey



| | |
|--------------------|---------------|
| Commercial Art.No. | 25.334.3253.0 |
| EAN | 4015573188372 |
| Order Unit | 100 |

Certificates / Approvals



Technical data

General

| | |
|--|----------------|
| Modular spacing | 5 mm |
| Soldering process | Wave soldering |
| Packaging | Carton |
| Number of poles | 2 |
| Number of levels | 2 |
| Marking | No |
| Fastening | None |
| Mating direction towards (circuit) board | 90° |

Technical data

| | |
|--------------------------|--------|
| Rated current | 10 A |
| Overvoltage Category I | 1000 V |
| Overvoltage Category II | 400 V |
| Overvoltage Category III | 250 V |
| Rated impulse voltage | 4 kV |

Technical Data UL/CSA

| | |
|------------------------|-------|
| Voltage UL | 300 V |
| Current field wiring | 15 A |
| Current factory wiring | 15 A |
| Voltage CSA | 300 V |

| | |
|-------------|------|
| Current CSA | 10 A |
|-------------|------|

Other

| | |
|-----------------------------|---------------|
| Type of insulation material | Thermoplastic |
| Color | Grey |
| Height | 22 mm |
| Length | 12.5 mm |
| Depth | 23.3 mm |
| Material contact base | CuZn |
| Material contact surface | Sn |

Classification

| | |
|------------|----------|
| ECLASS 11 | |
| ECLASS 8.1 | 27440402 |
| ETIM 7.0 | EC002637 |
| ETIM 6.0 | EC002637 |
| ETIM 5.0 | EC002637 |
| ETIM 4.0 | EC002637 |

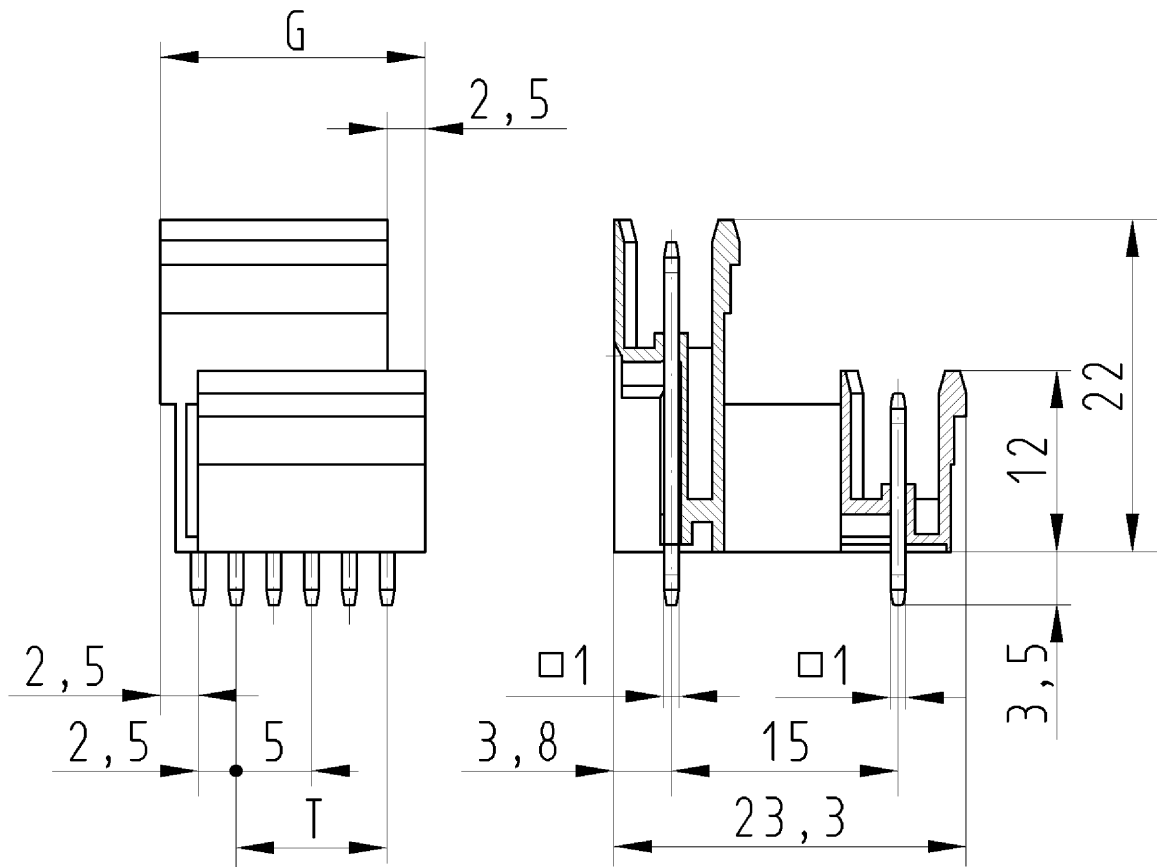
Product compliance

| | |
|------------------------------|-----------|
| ROHS conformity status | Compliant |
| REACH-SVHC conformity status | Compliant |

Fits with

| Commercial Art.No.: | Article-type description: | Description: |
|---------------------|---------------------------------|---|
| 25.220.3253.0 | PCB connector 8113 B / 2 TOP OB | PCB female connector with front/top screw connection, 2 poles, max. cross section: 2.5 mm ² , pitch: 5 mm, type of packing: carton, color: grey |
| 25.220.0253.0 | PCB connector 8113 B / 2 TOP | PCB female connector with front/top screw connection, 2 poles, printed version, max. cross section: 2.5 mm ² , pitch: 5 mm, type of packing: carton, color: grey |
| 01.060.3253.0 | PCB connector 8113 BK / 2 OB | PCB female connector with Crimp connection, 2 poles, max. cross section: 2.5 mm ² , pitch: 5 mm, type of packing: carton, color: grey |
| 01.060.0253.0 | PCB connector 8113 BK / 2 | PCB female connector with Crimp connection, 2 poles, printed version, max. cross section: 2.5 mm ² , pitch: 5 mm, type of packing: carton, color: grey |
| 25.320.3253.0 | PCB connector 8113 B / 2 OB | PCB female connector with screw connection with rising cage clamp system, 2 poles, max. cross section: 2.5 mm ² , pitch: 5 mm, type of packing: carton, color: grey |
| 25.320.0253.0 | PCB connector 8113 B / 2 | PCB female connector with screw connection with rising cage clamp system, 2 poles, printed version, max. cross section: 2.5 mm ² , pitch: 5 mm, type of packing: carton, color: grey |
| 25.325.3253.0 | PCB connector 8113 B / 2 VR OB | PCB female connector with screw connection with rising cage clamp system, 2 poles, max. cross section: 2.5 mm ² , pitch: 5 mm, type of packing: carton, color: grey |
| 25.325.0253.0 | PCB connector 8113 B / 2 VR | PCB female connector with screw connection with rising cage clamp system, 2 poles, printed version, max. cross section: 2.5 mm ² , pitch: 5 mm, type of packing: carton, color: grey |
| 25.326.3253.0 | PCB connector 8113 B / 2 VL OB | PCB female connector with screw connection with rising cage clamp system, 2 poles, max. cross section: 2.5 mm ² , pitch: 5 mm, type of packing: carton, color: grey |

| | | |
|---------------|------------------------------------|---|
| 25.326.0253.0 | PCB connector 8113 B / 2 VL | PCB female connector with screw connection with rising cage clamp system, 2 poles, printed version, max. cross section: 2.5 mm ² , pitch: 5 mm, type of packing: carton, color: grey |
| 25.820.3253.0 | PCB connector 8113 BFK / 2 TOP OB | PCB female connector with tension spring connection, 2 poles, max. cross section: 2.5 mm ² , pitch: 5 mm, type of packing: carton, color: grey |
| 25.820.0253.0 | PCB connector 8113 BFK / 2 TOP | PCB female connector with tension spring connection, 2 poles, printed version, max. cross section: 2.5 mm ² , pitch: 5 mm, type of packing: carton, color: grey |
| 25.399.9853.0 | PCB connector 8113 BSK / 2 0,75 OB | PCB female connector with screw connection with rising cage clamp system, 2 poles, max. cross section: 2.5 mm ² , pitch: 5 mm, type of packing: carton, color: grey |



Weitergabe sowie Vervielfältigung dieses Dokuments, Verwertung und Mitteilung seines Inhalts sind verboten, soweit nicht ausdrücklich gestattet. Die Reproduktion, Distribution und Utilization of this document as well as the communication of its contents to others without express authorization is prohibited.

für folgende Tabellen-Zchnng.:
 25.334.3353.0 8113 SE/...G

ETAGENSTIFTLEISTE
 25.334.3353.0 10W
 12.11.2007 SCJ
 M 2:1