


Product Specification



	Model: GNIXA4MDJD1S1	Rev. No.	Issued Date.	Page.
		A	2021, Dec. 23	1 / 27


Thin-Film-Transistor LCD Module
Model: GNIXA4MDJD1S1

Acceptance

Solomon Goldentek Display Corp.
NO. 18 Ta-Yeh St., Ta-Fa Industrial Park, Ta-Liao
Hsiang, Kaohsiung Hsien 831, TAIWAN , R.O.C.
FAX: 886-7-7886800

Approved and Checked by

Approved by	Checked by		Made by
			


Product Specification				
	Model: GNIXA4MDJD1S1	Rev. No.	Issued Date.	Page.
		A	2021, Dec. 23	2 / 27

Revise Records

Rev.	Date	Contents	Written	Approved
A	2021/12/23	Preliminary Specification	Aven Tung	Ken Hung

Special Notes


Note1.	
Note2.	
Note3.	
Note4.	
Note5.	

Product Specification				
	Model: GNIXA4MDJD1S1	Rev. No.	Issued Date.	Page.
		A	2021, Dec. 23	3 / 27

Contents

- 1. General Description and Features.....4**
- 1.1 Features 4
- 1.2 LCD Module 4
- 2. Mechanical Information.....4**
- 3. Electrical Specifications5**
- 3.1 Absolute Max. Ratings 5
- 4. Optical Characteristics9**
- 4.1 Optical characteristic of the LCD 9
- 5. I/O Terminal.....12**
- 5.1 Pin Assignment (MSB24013P20A or equivalent.) 12
- 5.2 Back-light (CN2:ENTERY 3808K-F05N-03L or Equivalent) 13
- 5.3 Pin Assignment for CTP (User Part No.:5F2.2535E-A3821.110(ARC) or equivalent.) 14
- 5.4 Block Diagram 15
- 6. Displayed Color and Input Data16**
- 7. Projected Capacitive Touch Panel17**
- 8. Reliability Condition.....18**
- 9. Dimensional Outlines19**
- 10. Incoming Inspection Standards22**

Product Specification

	Model: GNIXA4MDJD1S1	Rev. No.	Issued Date.	Page.
		A	2021, Dec. 23	4 / 27

1. General Description and Features

GNIXA4MDJD1S1 is a transmissive type color active matrix TFT (Thin Film Transistor) liquid crystal display (LCD) that uses amorphous silicon TFT as a switching device. This model is composed of a TFT-LCD module, a receiver circuit, and a back-light unit. Graphics and texts can be displayed on a HD 1024 (W) x 3 x 768 (H) dots (4:3 aspect ratio) with 262K colors by supplying 18 bits data signal (6bits/each color). The following table described the features of GNIXA4MDJD1S1.

1.1 Features

- Transmissive and back-light with 30 LEDs are available.
- IPS mode.
- LVDS Receiver 18 bit Interface.

1.2 LCD Module


Item	Specification	Unit
Screen Size	10.4 inches	Diagonal
Display Resolution	1024 (H) x 768 (V)	Pixel
Active Area	211.2 (H) x 158.4 (V)	mm
Outline Dimension	259.2 (H) x 206.4 (V) x 10.8 (T)	mm
Display Mode	Normally Black mode/ Transmissive	--
Surface Treatment	Anti-glare(AG)	--
Pixel Arrangement	R,G,B Vertical Stripe	--
Pixel Size	206.25 x 206.25	um
Display Color	262K	--
Viewing Direction	Full View	--
Input Interface	LVDS Receiver 18 bit Interface	--

2. Mechanical Information

Item	Min.	Typ.	Max.	Unit	Note
Module Size	Horizontal (H)	--	(259.2)	--	mm
	Vertical (V)	--	(206.4)	--	mm
	Thickness (T)	--	(10.8)	--	mm (1)
Weight	--	(TBD)	--	g	--

Note (1) Not Include Component. Refer to the Outline Dimension Drawing as attached.

Product Specification

	Model: GNIXA4MDJD1S1	Rev. No.	Issued Date.	Page.
		A	2021, Dec. 23	5 / 27

3. Electrical Specifications

3.1 Absolute Max. Ratings

3.1.1 Absolute Ratings of Environment

If the operating condition exceeds the following absolute maximum ratings, the TFT LCD module may be damaged permanently.

(Ta=25±2°C, GND=0)


Item	Symbol	Min.	Max.	Unit	Note
Storage temperature	T _{STG}	-30	80	°C	(1)
Operating temperature	T _{OPR}	-20	70	°C	(1,2,3)

Note (1) 95 % RH Max. (40 °C ≥ Ta). Maximum wet-bulb temperature at 39 °C or less. (Ta > 40 °C) No condensation.

Note (2) In case of below 0°, the response time of liquid crystal (LC) becomes slower and the color of panel becomes darker than normal one. Level of retardation depends on temperature, because of LC's character

Note (3) Only operation is guaranteed at operating temperature. Contrast, response time, another display quality are evaluated at +25°C.

Product Specification

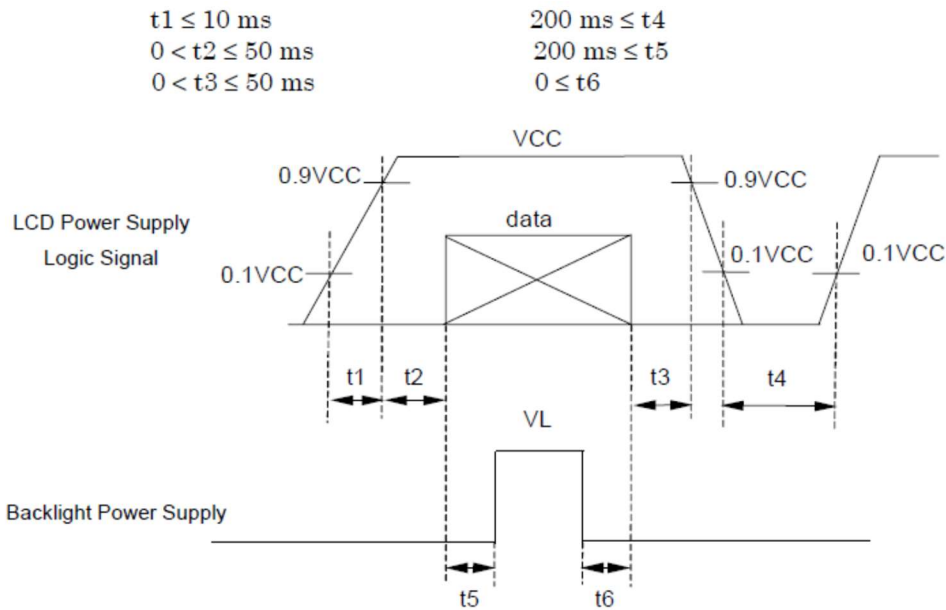
	Model: GNIXA4MDJD1S1	Rev. No.	Issued Date.	Page.
		A	2021, Dec. 23	6 / 27

3.1.2 Electrical Absolute Maximum Ratings


($V_{SS}=GND=0$)

Parameter	Symbol	Min.	Max.	Unit	Remark
Power supply Logic voltage	VCC	-0.3	4.0	V	
Power supply LED voltage	VLED	-0.3	40	V	
Permissible input ripple voltage	V_{RF}	--	100	mVp-p	VCC=3.3V

Display On/Off Sequence :



Product Specification

	Model: GNIXA4MDJD1S1	Rev. No.	Issued Date.	Page.
		A	2021, Dec. 23	7 / 27

3.1.3 DC Electrical Characteristics of the TFT LCD

(Ta=25±2°C, GND=0)

Item	Symbol	Min.	Typ.	Max.	Unit	Remark
Power supply Logic Voltage	VCC	3.0	3.3	3.6	V	
Power supply LED Voltage	VLED	8	12	40	V	
Input Voltage for logic	H Level	VIH	0.7xVDD	-	VDD	V
	L Level	VIL	0	-	0.3xVDD	V
Power Supply Current for LCM	ICC	-	(320)	(360)	mA	Note 1
Power Supply Current (LED Driver)	ILED	(1070)	(650)	(185)	mA	VLED=12V
ADJ Control Level	High	0.6	-	1.95	V	
	Low	0	-	0.2	V	
PWM Control Ratio	-	0	-	100	%	
PWM Control Frequency	-	100	-	2K	Hz	

Note : 1 : White Pattern & 60Hz



Note2: The environmental conducted under ambient air flow ,at Ta=25±2°C,60%RH±5%

3.1.4 AC Timing Condition

Signal	Parameter	Symbol	Min.	Typ.	Max.	Unit.	Remark
DCLK	CLK frequency	fclk	52	65	71	MHz	
Horizontal Timing	Horizontal display area	Thd	1024			DCLK	
	HSYNC period time	Th	1114	1344	1400	DCLK	
	HSYNC Blanking	thb+thfp	90	320	376	DCLK	
Vertical Timing	Vertical display area	Tvd	768			TH	
	VSYNC Period time	Tv	778	806	845	TH	
	VSYNC Blanking	Tvb+tvfp	10	38	77	TH	

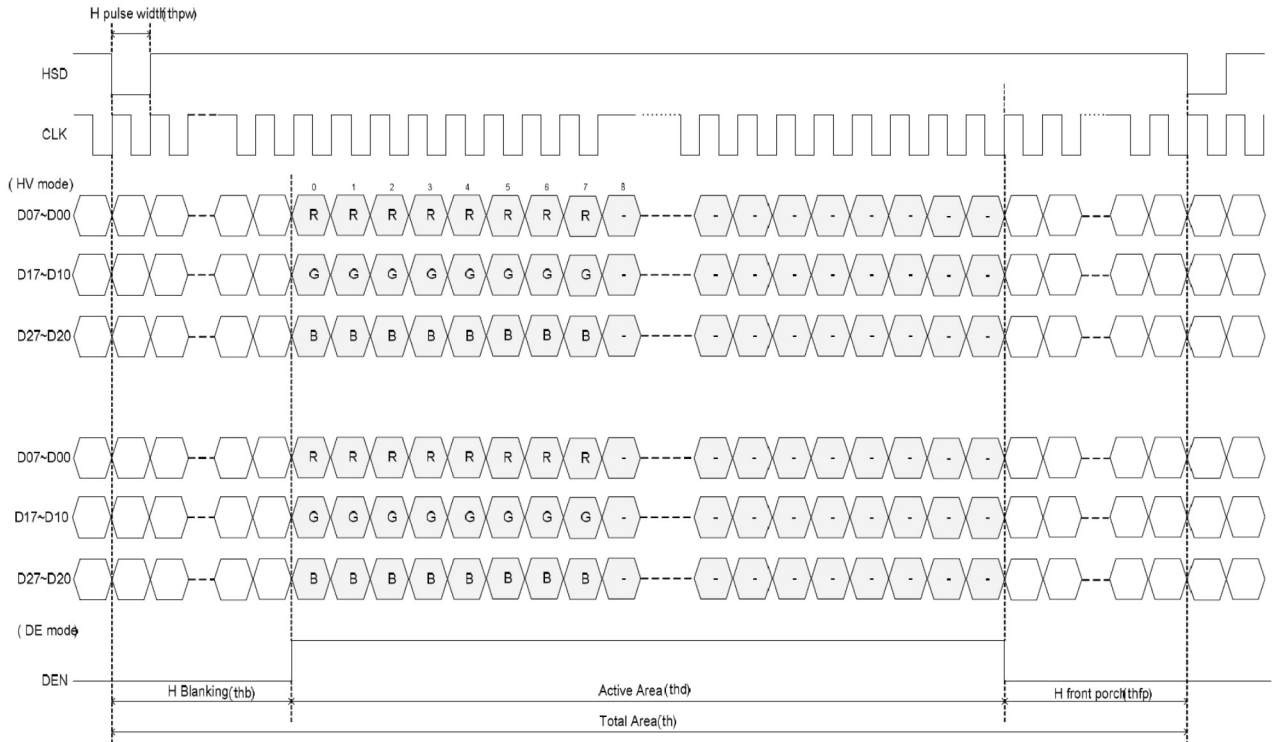
Product Specification



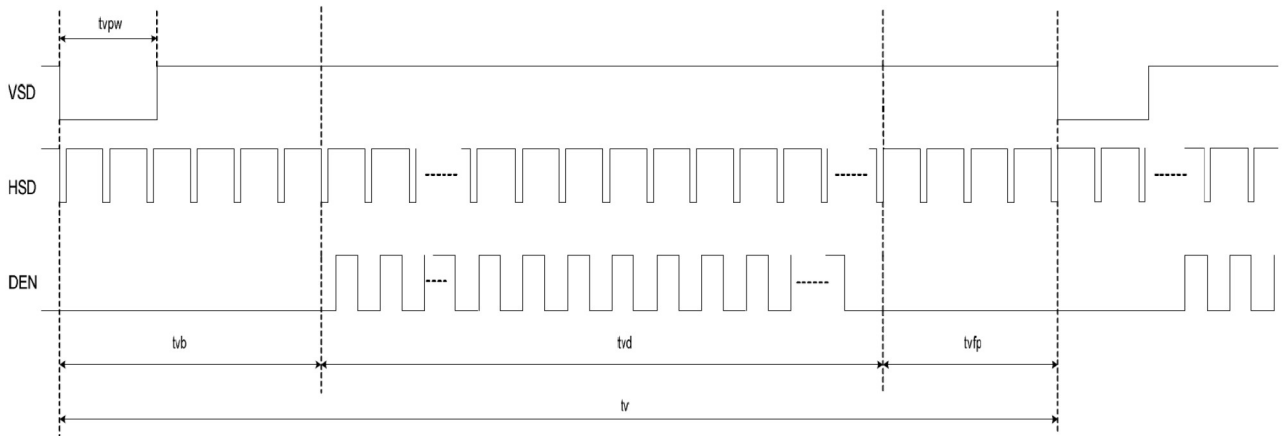
Model: GNIXA4MDJD1S1	Rev. No.	Issued Date.	Page.
	A	2021, Dec. 23	8 / 27

3.1.5 Timing Characteristic


3.1.5.1 Horizontal Timing



3.1.5.2 Vertical Timing



Product Specification

	Model: GNIXA4MDJD1S1	Rev. No.	Issued Date.	Page.
		A	2021, Dec. 23	9 / 27

4. Optical Characteristics


4.1 Optical characteristic of the LCD

The following items are measured under stable conditions. The optical characteristics should be measured in a dark room or equivalent state with the methods.

Measuring equipment: BM-7A

Item	Symbol	Condition	Min	Type	Max	Unit	Note	
Brightness	B		(800)	(900)	--	cd/m ²		
Response time	T _r +T _f	$\theta=0^\circ$	-	30	40	ms	.	
Contrast ratio	CR	At optimized viewing angle	(600)	(900)	--	--		
Luminance Uniformity	ΔL		70	75		%		
Color Chromaticity (CIE 1931)	White	W _x	$\theta=0^\circ$ Normal Viewing Angle	(0.28)	(0.33)	(0.38)	--	BM-7A
		W _y		(0.35)	(0.40)	(0.45)		
Viewing Angle	Hor.	θ_R	CR \geq 10	80	85	--	Degree	
		θ_L		80	85	--		
	Ver.	θ_U		80	85	--		
		θ_D		80	85	--		

Product Specification

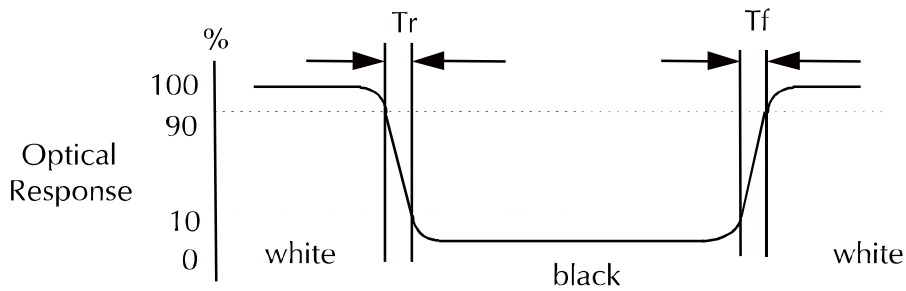
	Model: GNIXA4MDJD1S1	Rev. No.	Issued Date.	Page.
		A	2021, Dec. 23	10 / 27

a. Test equipment setup

After stabilizing and leaving the panel alone shall be warmed up for the stable operation of LCM, the measurement should be executed. Measurement should be executed in a stable, windless, and dark room. Optical specifications are measured by Topcon BM-7A(fast) with a viewing angle of 2° at a distance of 50cm and normal direction.

b. Definition of response time: Tr and Tf

The response time is defined as the following figure and shall be measured by switching the input signal for "black" and "white".




c. Definition of contrast ratio:

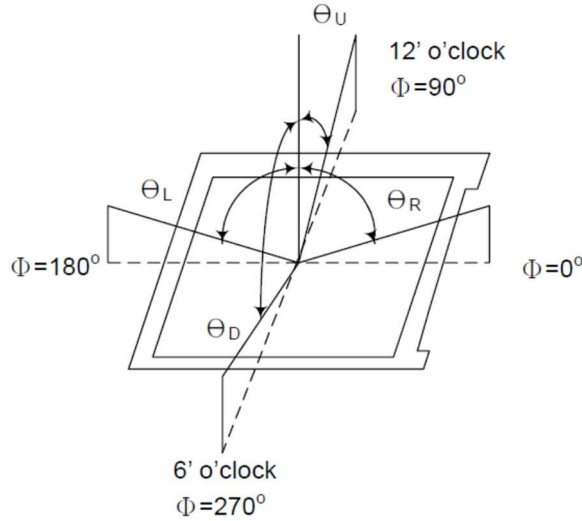
$$\text{Contrast Ratio (CR)} = \frac{\text{Brightness measured when LCD is at "white state"}}{\text{Brightness measured when LCD is at "black state"}}$$

d. Measured at the center area of the panel when all the input terminals of LCD panel are electrically opened.

Product Specification

	Model: GNIXA4MDJD1S1	Rev. No.	Issued Date.	Page.
		A	2021, Dec. 23	11 / 27

e. View Angle




f. Definition of Luminance of White: Luminance of white at the center points

Light Source of Back-Light Unit	LED Type
---------------------------------	----------

g. Definition of White Uniformity

$$\text{White Uniformity} = \frac{\text{Min. luminance of white among 9-points}}{\text{Max. luminance of white among 9-points}} \times 100\%$$

Product Specification

	Model: GNIXA4MDJD1S1	Rev. No.	Issued Date.	Page.
		A	2021, Dec. 23	12 / 27

5. I/O Terminal

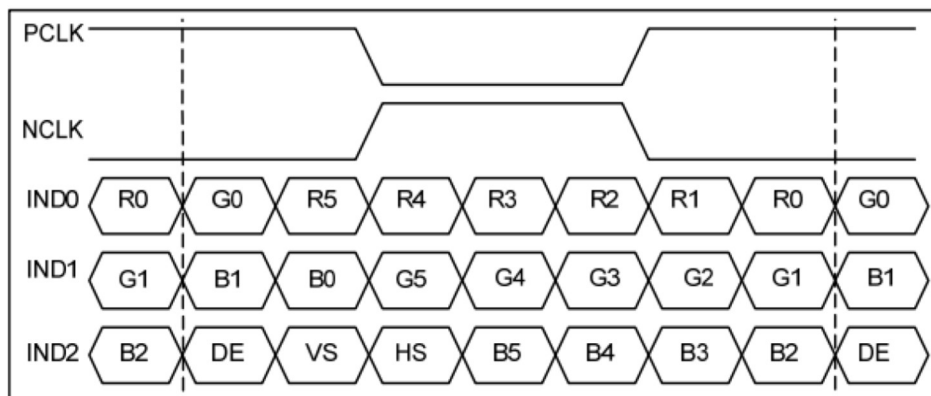
5.1 Pin Assignment (MSB24013P20A or equivalent.)

Pin No.	Symbol	I/O	Function	Remark
1	VCC	P	Power Supply for LCM	
2	VCC	P	Power Supply for LCM	
3	NC	-	No Connect	
4	GND	P	Ground	
5	RXI0-	I	Negative LVDS differential data 0 input	
6	RXI0+	I	Positive LVDS differential data 0 input	
7	GND	P	Ground	
8	RXI1-	I	Negative LVDS differential data 1 input	
9	RXI1+	I	Positive LVDS differential data 1 input	
10	GND	P	Ground	
11	RXI2-	I	Negative LVDS differential data 2 input	
12	RXI2+	I	Positive LVDS differential data 2 input	
13	GND	P	Ground	
14	RXICLK-	I	Negative LVDS differential CLK input	
15	RXICLK+	I	Positive LVDS differential CLK input	
16	GND	P	Ground	
17	NC	-	No Connect	
18	NC	-	No Connect	
19	GND	P	Ground	
20	GND	P	Ground	


I: Input, O: Output, P: Power

Note 1 :LVDS Input

6 bit LVDS Input

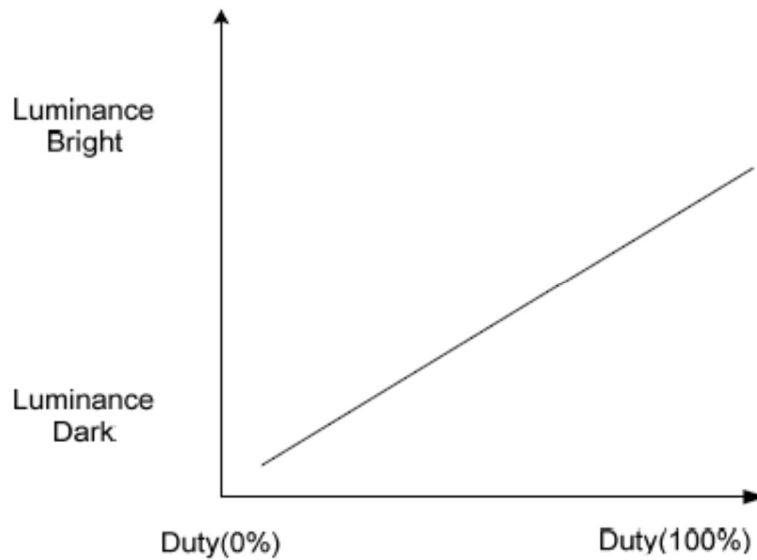


Product Specification

	Model: GNIXA4MDJD1S1	Rev. No.	Issued Date.	Page.
		A	2021, Dec. 23	13 / 27

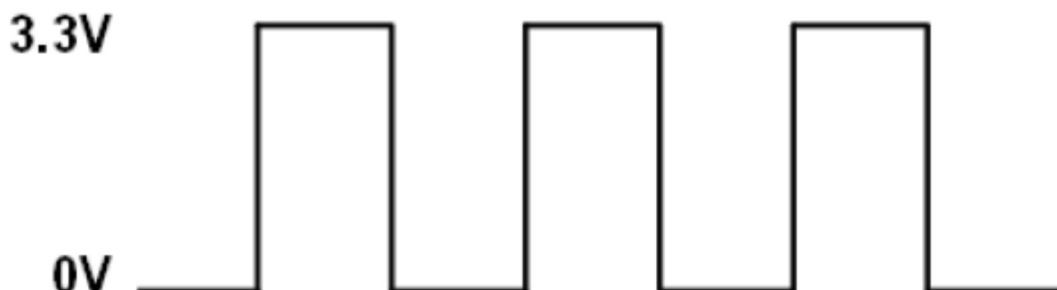
5.2 Back-light (CN2:ENTERY 3808K-F05N-03L or Equivalent)

Pin No.	Symbol	I/O	Function	Remark
1	VLED	P	Power Supply voltage for Backlight	
2	GND	P	Ground	
3	ON/OFF	I	Backlight ON/OFF	
4	Dimming	I	Adjust brightness	Note 2
5	GND	P	Ground	




Note 2: ADJ Voltage : 0.6~1.95V (0%~100%)

Note 3: PWM signal : 0~3.3V, Operating frequency:100Hz~2KHz



Product Specification

	Model: GNIXA4MDJD1S1	Rev. No.	Issued Date.	Page.
		A	2021, Dec. 23	14 / 27

5.3 Pin Assignment for CTP (User Part No.:5F2.2535E-A3821.110(ARC) or equivalent.)

Pin No.	Symbol	I/O	Function	Remark
1	GND	P	Ground	
2	VDD	P	I2C VDD 3.3V	
3	Reset	I	I2C Reset Pin	
4	INT	O	I2C INT Pin	
5	SDA	I/O	I2C SDA Pin	
6	SCL	I/O	I2C SCL Pin	
7	GND	P	Ground	
8	NC	-	No Connect	
9	NC	-	No Connect	
10	NC	-	No Connect	

Product Specification



Model: GNIXA4MDJD1S1

Rev. No.

Issued Date.

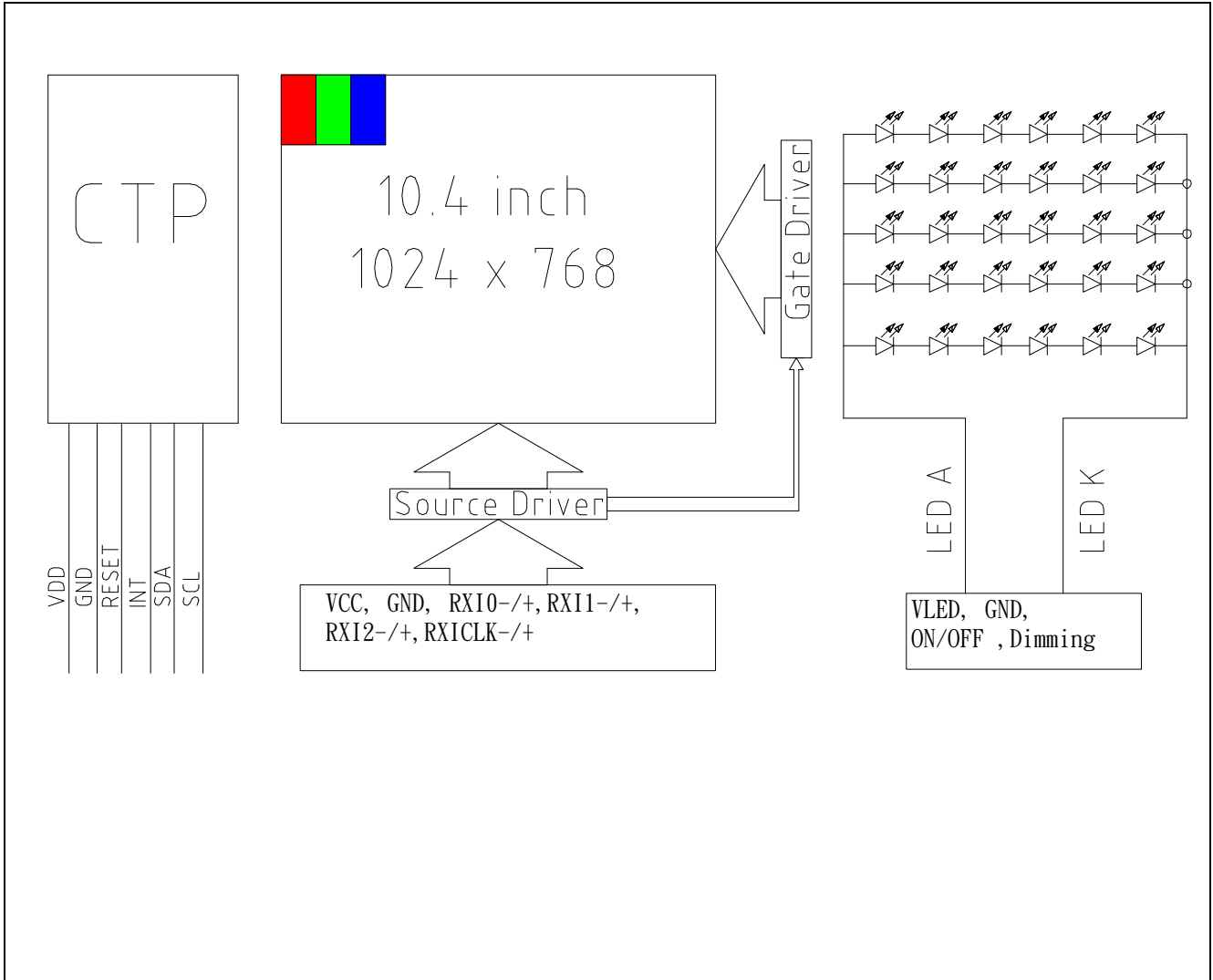
Page.

A


2021, Dec. 23

15 / 27

5.4 Block Diagram



Product Specification

	Model: GNIXA4MDJD1S1	Rev. No.	Issued Date.	Page.
		A	2021, Dec. 23	16 / 27


6. Displayed Color and Input Data

	Color & Gray Scale	Data Signal																	
		R5	R4	R3	R2	R1	R0	G5	G4	G3	G2	G1	G0	B5	B4	B3	B2	B1	B0
Basic Color	Black	0	0	0	0	0	0	0	0	0	0	0	0	0	0	0	0	0	0
	Red(0)	1	1	1	1	1	1	0	0	0	0	0	0	0	0	0	0	0	0
	Green(0)	0	0	0	0	0	0	1	1	1	1	1	1	0	0	0	0	0	0
	Blue(0)	0	0	0	0	0	0	0	0	0	0	0	0	1	1	1	1	1	1
	Cyan	0	0	0	0	0	0	1	1	1	1	1	1	1	1	1	1	1	1
	Magenta	1	1	1	1	1	1	0	0	0	0	0	0	1	1	1	1	1	1
	Yellow	1	1	1	1	1	1	1	1	1	1	1	1	0	0	0	0	0	0
	White	1	1	1	1	1	1	1	1	1	1	1	1	1	1	1	1	1	1
Red	Black	0	0	0	0	0	0	0	0	0	0	0	0	0	0	0	0	0	0
	Red(62)	0	0	0	0	0	1	0	0	0	0	0	0	0	0	0	0	0	0
	Red(61)	0	0	0	0	1	0	0	0	0	0	0	0	0	0	0	0	0	0
	:	:	:	:	:	:	:	:	:	:	:	:	:	:	:	:	:	:	:
	Red(31)	0	1	1	1	1	1	0	0	0	0	0	0	0	0	0	0	0	0
	:	:	:	:	:	:	:	:	:	:	:	:	:	:	:	:	:	:	:
	Red(1)	1	1	1	1	1	0	0	0	0	0	0	0	0	0	0	0	0	0
	Red(0)	1	1	1	1	1	1	0	0	0	0	0	0	0	0	0	0	0	0
Green	Black	0	0	0	0	0	0	0	0	0	0	0	0	0	0	0	0	0	0
	Green(62)	0	0	0	0	0	0	0	0	0	0	0	1	0	0	0	0	0	0
	Green(61)	0	0	0	0	0	0	0	0	0	0	1	0	0	0	0	0	0	0
	:	:	:	:	:	:	:	:	:	:	:	:	:	:	:	:	:	:	:
	Green(31)	0	0	0	0	0	0	0	1	1	1	1	0	0	0	0	0	0	0
	:	:	:	:	:	:	:	:	:	:	:	:	:	:	:	:	:	:	:
	Green(1)	0	0	0	0	0	0	1	1	1	1	1	0	0	0	0	0	0	0
	Green(0)	0	0	0	0	0	0	1	1	1	1	1	1	0	0	0	0	0	0
Blue	Black	0	0	0	0	0	0	0	0	0	0	0	0	0	0	0	0	0	0
	Blue(62)	0	0	0	0	0	0	0	0	0	0	0	0	0	0	0	0	0	1
	Blue(61)	0	0	0	0	0	0	0	0	0	0	0	0	0	0	0	0	1	0
	:	:	:	:	:	:	:	:	:	:	:	:	:	:	:	:	:	:	:
	Blue(31)	0	0	0	0	0	0	0	0	0	0	0	0	0	1	1	1	1	1
	:	:	:	:	:	:	:	:	:	:	:	:	:	:	:	:	:	:	:
	Blue(1)	0	0	0	0	0	0	0	0	0	0	0	0	1	1	1	1	1	0
	Blue(0)	0	0	0	0	0	0	0	0	0	0	0	0	1	1	1	1	1	1

0 : Low level voltage, 1 :High level voltage

Each basic color can be displayed in 64 gray scales from 6 bit data signals. With the combination of total 18 bit data signals, the 262,144-color display can be achieved on the screen.

Product Specification


	Model: GNIXA4MDJD1S1	Rev. No.	Issued Date.	Page.
		A	2021, Dec. 23	17 / 27

7. Projected Capacitive Touch Panel

7.1 Main Feature

Item	Specification	Unit
Screen Size	10.4 inches	Diagonal
Type	Projected Capacitive Touch Panel	--
Input Mode	Human's Finger or Through a special stylus	--
Active Area	215.2(H) X 162.4(V)	mm
Module Outline	259.2(H) X 206.4(V) X 2(T)	mm
Interface	I2C	--
IC Type	Hy4635	
Touch Function	4	points
Cover glass pencil-handness	≥ 6 H	--
Digital Power Supply	3.3V DC	V

Product Specification

	Model: GNIXA4MDJD1S1	Rev. No.	Issued Date.	Page.
		A	2021, Dec. 23	18 / 27

8. Reliability Condition

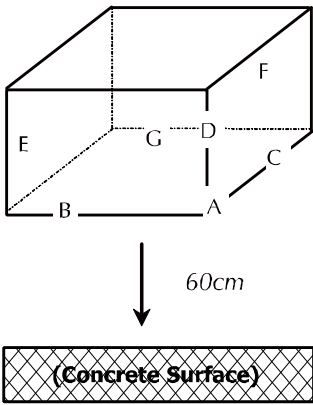
No change on display and in operation under the following test condition.

Condition: Unless otherwise specified, tests will be conducted under the following condition.

Temperature: 20±5°C.

Humidity: 65±5%RH.

Tests will be not conducted under functioning state.

No.	Parameter	Condition	Notes
1	High Temperature Operating	70°C±2°C, 240hrs (Operation state).	
2	Low Temperature Operating	-20°C±2°C, 240hrs (Operation state).	1
3	High Temperature Storage	80°C±2°C, 240hrs.	2
4	Low Temperature Storage	-30°C±2°C, 240hrs.	1,2
5	High Temperature and High Humidity Operation Test	60°C±2°C, 90%, 240hrs.	1,2
6	Vibration Test	Total fixed amplitude: 1.5mm. Vibration Frequency: 10~55Hz. One cycle 60 seconds to 3 direction of Random each 15 minutes.	3
7.	Drop Test	To be measured after dropping from 60cm high on the concrete surface in packing state.  <p style="margin-left: 20px;"><i>Dropping method corner dropping:</i></p> <p style="margin-left: 20px;"><i>A corner: Once edge dropping.</i></p> <p style="margin-left: 20px;"><i>B, C, D edge: Once face dropping.</i></p> <p style="margin-left: 20px;"><i>E, F, G face: Once.</i></p>	

- Notes:
1. No dew condensation to be observed.
 2. The function test shall be conducted after 4 hours storage at the normal temperature and humidity after removed from the test chamber.
 3. Vibration test will be conducted to the product itself without putting I in a container.

Product Specification



Model: GNIXA4MDJD1S1

Rev. No.

Issued Date.

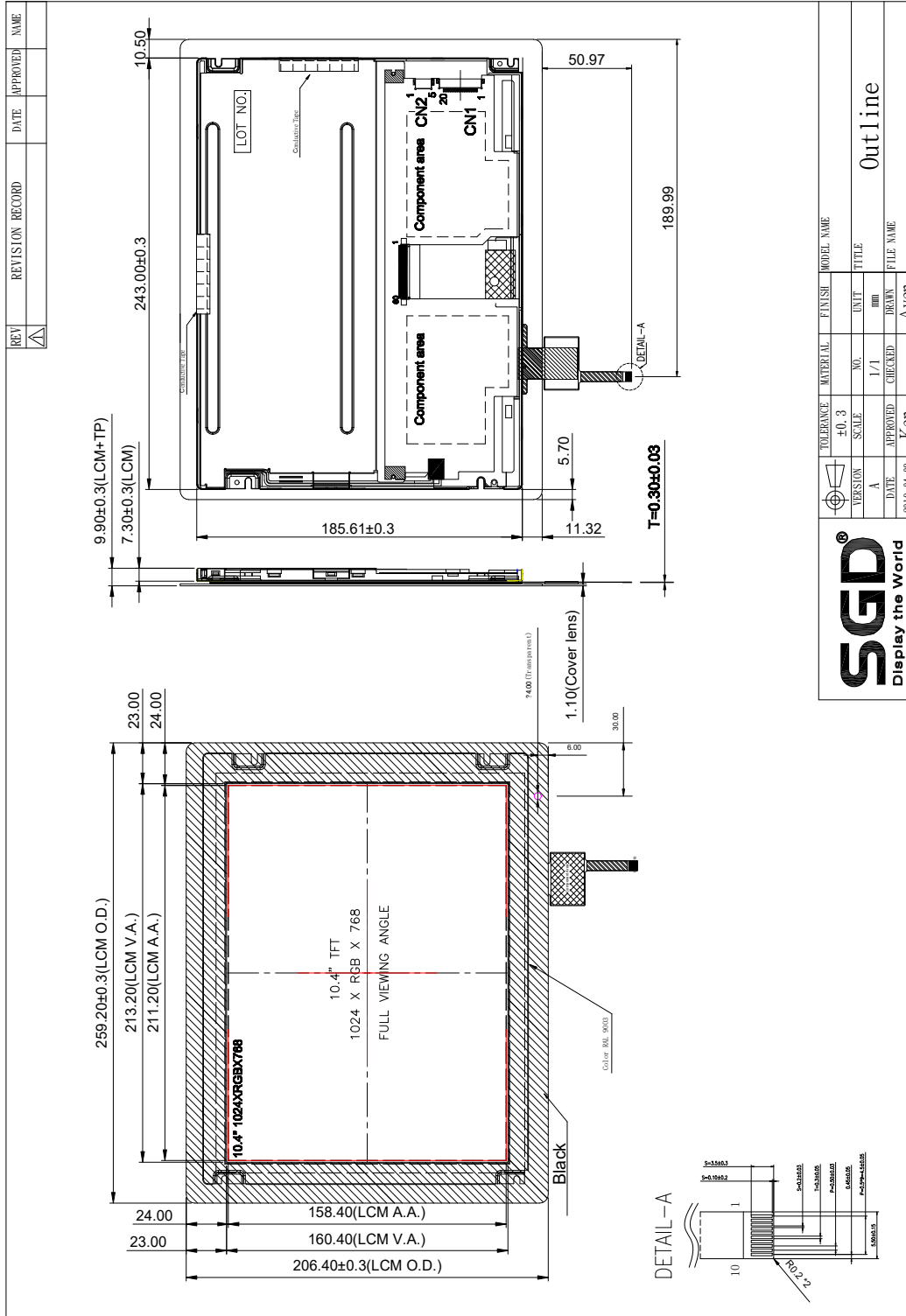
Page.

A

2021, Dec. 23

19 / 27

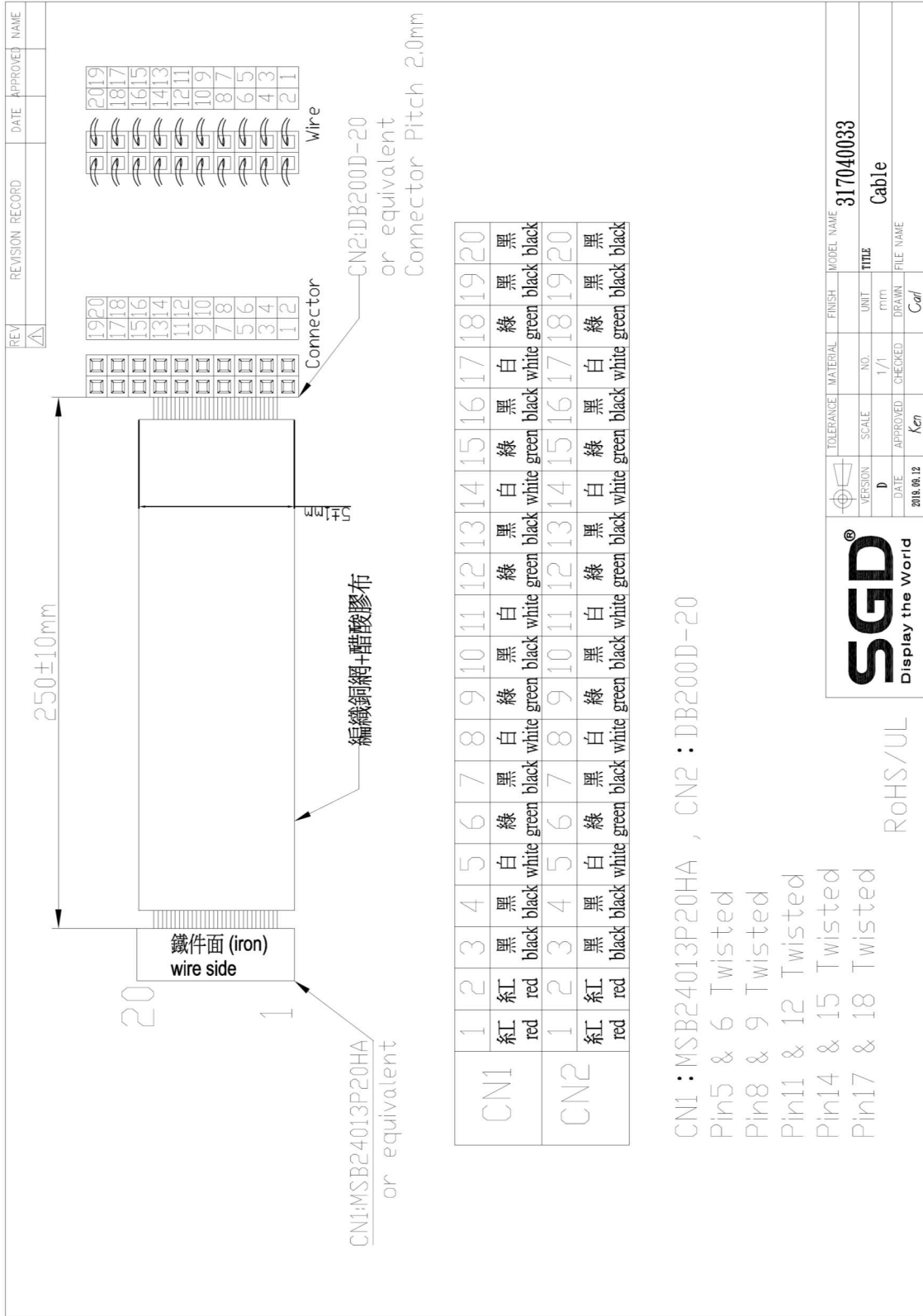
9. Dimensional Outlines



Product Specification



Model: GNIXA4MDJD1S1	Rev. No.	Issued Date.	Page.
	A	2021, Dec. 23	20 / 27



TOLERANCE	MATERIAL	FINISH	MODEL NAME
			317040033
VERSION	SCALE	NO.	UNIT
D		1/1	mm
DATE	APPROVED	CHECKED	DRAWN
2018.06.12	Ken		Carl
			FILE NAME
			Cable

RoHS/UL

SGD
 Display the World

Product Specification



Model: GNIXA4MDJD1S1

Rev. No.

Issued Date.

Page.

A

2021, Dec. 23

21 / 27

REV	REVISION RECORD	DATE	APPROVED	NAME
1				

250±11mm


CN1
88232-0500or
equivalent

CN2
510210500or
equivalent

CN1		CN2	
1	紅 red	1	紅 red
2	黑 black	2	黑 black
3	藍 blue	3	藍 blue
4	橘 orange	4	橘 orange
5	黑 black	5	黑 black

TOLERANCE		MATERIAL		FINISH		MODEL NAME	317040031
VERSION	SCALE	NO.	1/1	UNIT	mm	TITLE	Cable
DATE	APPROVED	CHECKED	DRAWN	DATE	2018.06.12	FILE NAME	
	Ken	Kevin	Kevin	Kolos			

Product Specification

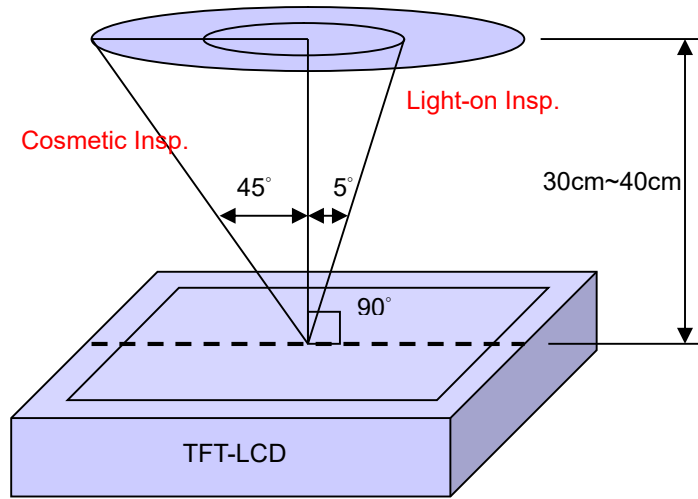
	Model: GNIXA4MDJD1S1	Rev. No.	Issued Date.	Page.
		A	2021, Dec. 23	22 / 27

10. Incoming Inspection Standards

10.1 Inspection and Environment Conditions

10.1.1 Inspection Conditions:

- (1) Inspection Distance: 35 cm±5cm
- (2) View Angle : Light-on Inspection Angle : ±5°
Cosmetic Inspection Angle : ±45°



(perpendicular to LCD panel surface)

10.1.2 Environment Conditions:

Ambient Temperature		23°C±5°C
Ambient Humidity		55±10%RH
Ambient Illumination	Cosmetic Inspection	more than 600 Lux
	Functional Inspection	300~500 Lux


10.1.3 Sampling Conditions:

- (1) Lot Size: Quantity of shipment lot per model
- (2) Sampling Method:

Sampling Plan		MIL-STD-105E
		Normal Inspection, Single Sampling
		Level II
AQL	Major Defect	1.0%
	Minor Defect	1.5%

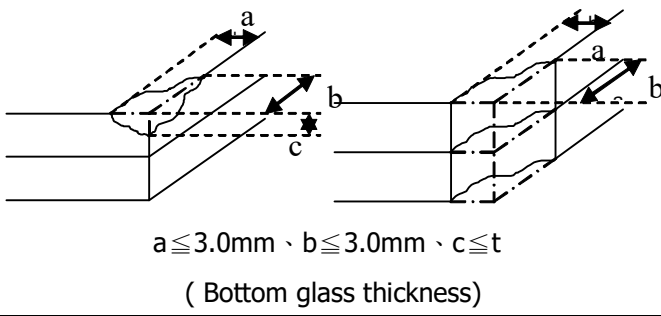
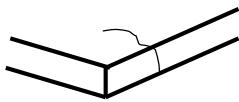
- (3) The classification of Major(MA) and Minor(MI) defects is shown as 3. Inspection Criteria.

Product Specification


	Model: GNIXA4MDJD1S1	Rev. No.	Issued Date.	Page.
		A	2021, Dec. 23	23 / 27

10.1.4 Inspection Criteria

10.1.4.1 Cosmetic Inspection(Panel):

Item	Judgment Criteria	Classification
Chipping on Panel	 <p style="text-align: center;">$a \leq 3.0\text{mm} \cdot b \leq 3.0\text{mm} \cdot c \leq t$ (Bottom glass thickness)</p>	MA
Scratch on Panel *Note-2	$W \leq 0.05\text{mm}$ or $L < 5\text{mm}$: Ignored $0.05\text{mm} < W \leq 0.1\text{mm}$ and $L \leq 5\text{mm}$: $N \leq 5$ $W > 0.1\text{mm}$ or $L > 5\text{mm}$: Not allowed	MI
Bubble or Dent on Panel *Note-3	$D \leq 0.2\text{mm}$: Ignored $0.2\text{mm} < D \leq 0.3\text{mm}$: $N \leq 5$ $D > 0.3\text{mm}$: Not allowed	MI
Panel Crack	 <p style="text-align: center;">Not Allowed crack</p>	MA
Bezel Deformation	Obvious deformation is not allowed.	MI
Bezel Oxidation	Not allowed if it rusts continuously over 1 cm (It is out of warranty with rusted tin plate)	MI
Bezel Scratch	$L \leq 20\text{mm}$, $W \leq 0.2$, $N \leq 3$	MI
Metal Squash Dent /Flange(Front Side)	$D(W) \leq 1, L \leq 3, N \leq 3;$	MI
B/L High Voltage Wire Denudation	Not allowed	MA
Polarizer flaw or leak out resin	Defect is defined as the active area.	MI
Outline Dimension	Must in Spec, refer to related product spec.	MI
Mura & Leak	ND5%	


Product Specification

	Model: GNIXA4MDJD1S1	Rev. No.	Issued Date.	Page.
		A	2021, Dec. 23	24 / 27

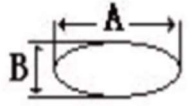
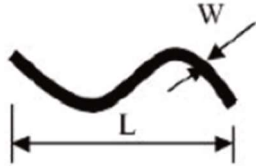
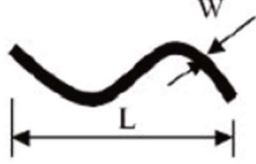
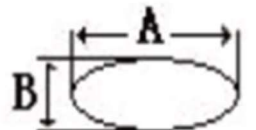
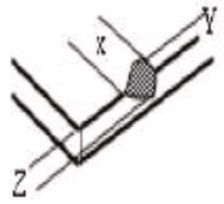
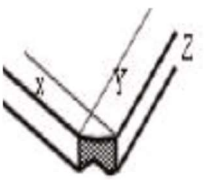
10.1.4.2 Functional Inspection:

Item	Judgment Criteria			Classification
	Area(Note1)	I	O	
Point Defect	Bright dot	Random	2	
		2 dots adjacent	0	0
		3 dots adjacent or more	0	0
	Dark dot	Random	3	
		2 dots adjacent	0	
		3 dots adjacent or more	0	0
	Total Dot Defect		5	
	Distance	Distance between Bright and Bright dot	$L \geq 5\text{mm}$	
		Distance between Bright and Dark dot	$L \geq 5\text{mm}$	
		Distance between Dark dot	$L \geq 50\text{mm}$	
(1) It is defined as Point Defect if defect area $> 0.5\text{dot}$ (2) It is ignored if defect area $\leq 0.5\text{dot}$ (3) Weak point defect will be defined as Bright Dot if it can be observed through ND filter 5%(Full Screen Black Inspection)				
Line Defect	Obvious vertical or horizontal line defect is not allowed.			MA
Mura	Not allowed if it can be observed through ND Filter 5 %			MI
Foreign Material in spot shape *Note-3	$D \leq 0.2\text{mm}$: Ignored $0.2\text{mm} < D \leq 0.5\text{mm}$: $N \leq 8$ $D > 0.5\text{mm}$: Not allowed			MI
Foreign Material in line or spiral shape *Note-4	$W \leq 0.05\text{mm}$ or $L \leq 5\text{mm}$: Ignored $0.05\text{mm} < W \leq 0.2\text{mm}$ and $L 1.0\text{mm} \leq 5\text{mm}$: $N \leq 8$ $W > 0.2\text{mm}$ or $L > 5\text{mm}$: Not allowed			MI
Display Function Abnormal	No Malfunction can be allowed			MA


Product Specification

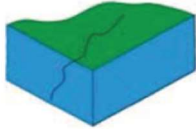
	Model: GNIXA4MDJD1S1	Rev. No.	Issued Date.	Page.
		A	2021, Dec. 23	25 / 27

10.1.4.3 Appearance inspection(Touch Panel)

Item	Judgment Criteria	Classification
Dots defects	1. $D \leq 0.2\text{mm}$, Ignored ⑦ Pass 2. $0.2\text{mm} < D \leq 0.35\text{mm}$, $DS > 10\text{mm}$, $N \leq 3$, Ignored ⑦ Pass 3. $D > 0.35\text{mm}$ ⑦ Not allowed	 $\Phi = (A+B)/2$
Scratch	1. $W < 0.03\text{mm}$, $L \leq 10\text{mm}$ Ignored ⑦ Pass 2. $0.03\text{mm} \leq W \leq 0.05\text{mm}$, $L < 5\text{mm}$ $DS > 10\text{mm}$, $N \leq 3$, Ignored ⑦ Pass $L > 5\text{mm}$ ⑦ Not allowed 3. $W > 0.05\text{mm}$ ⑦ Not allowed	
Linear defects	1. $W < 0.25\text{mm}$, Ignored ⑦ Pass 2. $L < 2\text{mm}$, $DS > 10\text{mm}$, $N \leq 2$, Ignored ⑦ Pass 3. $0.035\text{mm} \leq W \leq 0.05\text{mm}$, $L < 2\text{mm}$, $N \leq 1$, Ignored ⑦ Pass $L > 2\text{mm}$, $N > 2$ ⑦ Not allowed 4. $W > 0.05\text{mm}$ ⑦ Not allowed	
Concave /Convex / Bubbles	1. $D < 0.2\text{mm}$, $N \leq 2$, $DS > 10\text{mm}$ Ignored ⑦ Pass 2. $0.2\text{mm} < D \leq 0.35\text{mm}$, $N \leq 2$, Ignored ⑦ Pass 3. $D > 0.35\text{mm}$ ⑦ Not allowed	 $\Phi = (A+B)/2$
Edge broken loss	1. $X \leq 2\text{mm}$, $Y \leq 1\text{mm}$, $Z \leq t$ (t = glass thickness), without affecting the function of the product, it is disregard. 2. If the edge fault is located on a golden finger or line, it seriously affects the function of the product, the product is NG. X: Length ; Y: Width ; Z: Glass Thickness	
Corner broken loss	1. $X \leq 1.5\text{mm}$, $Y \leq 1\text{mm}$, $Z \leq t$ (t = glass thickness), without affecting the function of the product, it is disregard. 2. If the edge fault is located on a golden finger or line, it seriously affects the function of the product, the product is NG. X: Length ; Y: Width ; Z: Glass Thickness	

Product Specification

	Model: GNIXA4MDJD1S1	Rev. No.	Issued Date.	Page.
		A	2021, Dec. 23	26 / 27

Crack	Not allowed: no matter in what position.	
-------	--	---

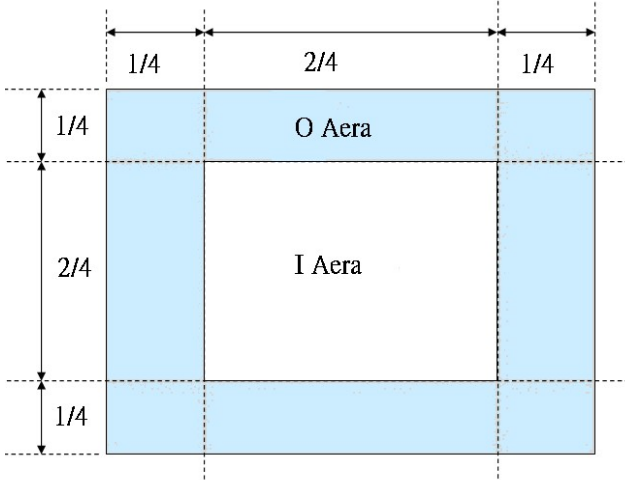
Item	Judgment Criteria
Smudge	Can wipe clean part that judged to be OK.
Color/ Logo/ Typeface of cover lens ; shade of background	Color shows no difference from that of the samples.
	Uniform and clear typeface, clear pattern.
	Good shade of background color.
	Less than 0.3mm tolerance is allowed.

Product Specification

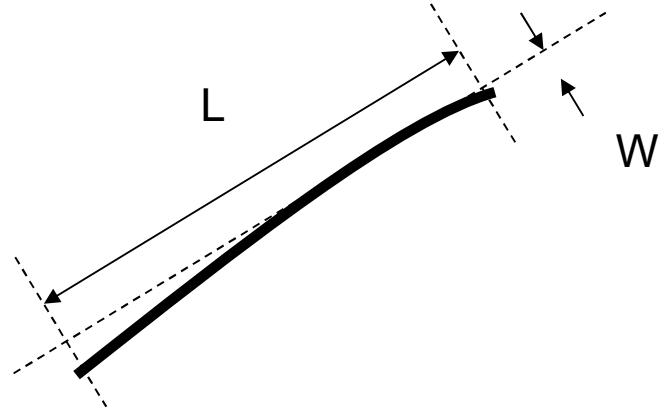


Model: GNIXA4MDJD1S1	Rev. No.	Issued Date.	Page.
	A	2021, Dec. 23	27 / 27

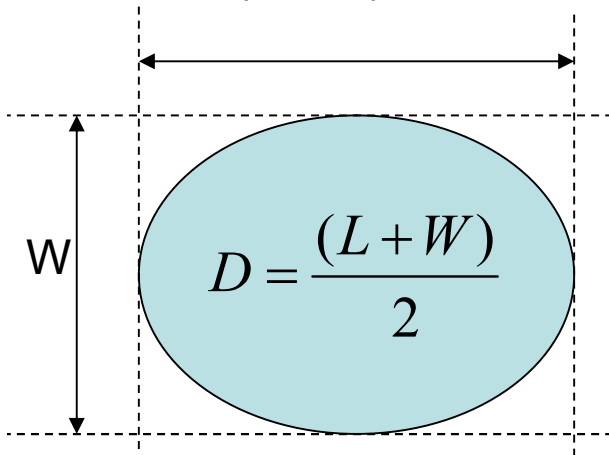
Note-1 : I/O Area Definition



Note-2 : Polarizer Scratch



Note-3 : Spot Foreign Material
($W \geq L / 4$)



Note-4 : Line or Spiral Foreign Material
($W < L / 4$)

