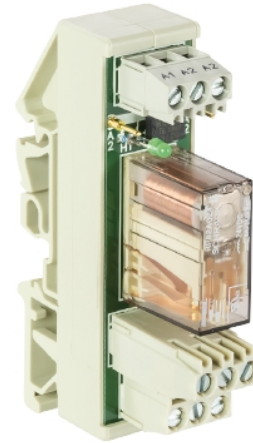


Data sheet

Commercial Art.No.: 80.010.1002.0

Relay module WRS-REL-2W-48V20M

WRS-relays, contact Assignment: 2 change-over contacts, gold-plated contact, relay not plugable, with LED, open module housing WEB 1002, dimensions: 80x22,5mm (HxW), control voltage: 24V DC,output voltage: maximim 48VDC / 20mADC



Commercial Art.No.	80.010.1002.0
EAN	4015573322523
Order Unit	5

Certificates / Approvals



Technical data

General

Connection type	screw connection
Number of change-over contacts	2
Detachable clamps	No
Drive, polarization	Polarity free
Drive, function	Mono stable
Forced-guided contacts	No
Complete with socket	yes
Degree of protection (IP)	IP20

Technical data

Type of excitation	AC/DC
Rated frequency, auxiliary-/control circuit	50 - 60
Min. rated frequency, auxiliary/control current circuit	50 Hz
Max. rated frequency, auxiliary/control current circuit	60 Hz
Min. nominal voltage DC	24 V
Lower nominal voltage DC	20.4 V
Upper nominal voltage DC	26.4 V

Dimensions

Depth	60 mm
Width	22.5 mm
Height	80 mm

ECLASS 11	
ECLASS 8.1	27371601
ETIM 7.0	EC001437
ETIM 6.0	EC001437
ETIM 5.0	EC001437
ETIM 4.0	EC001437

Product compliance

ROHS conformity status	Compliant/Exempted
ROHS exceptions	III-6(c)
REACH-SVHC conformity status	Duty-To-Declare
REACH-SVHC substances	Lead
REACH-SVHC CAS numbers	7439-92-1