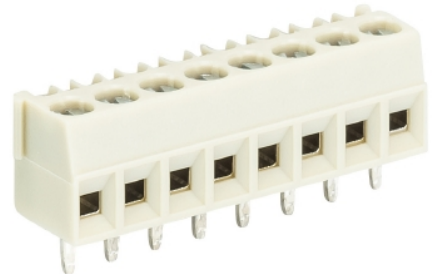


Data sheet

Commercial Art.No.: 25.194.0453.0

Printed circuit board terminal 8593 / 4

PCB terminal with screw connection with rising cage clamp system, 4 poles, printed version, with solder pin (3.5mm), max. cross section: 1.5 mm², pitch: 3.5 mm, type of packing: carton, color: grey



Commercial Art.No.	25.194.0453.0
EAN	4015573317352
Order Unit	50

Certificates / Approvals



Technical data

General

Modular spacing	3.5 mm
Connection type	screw connection
Soldering process	Wave soldering
Packaging	Carton
Number of poles	4
Conductor to circuit board	180°
Number of levels	1
Integrated test socket	yes
Insulation plate	No
Retaining pins	No
Marking	yes

Technical data

Nominal cross section	1 mm ²
Rated current	10 A
Overvoltage Category I	690 V
Overvoltage Category II	250 V
Overvoltage Category III	160
Rated impulse voltage	2.5 kV
Wire strip length	5 mm

Connection Data

Minimum cross section solid	0.14 mm ²
Maximum cross section solid	1.5 mm ²
Minimum cross section fine stranded	0.14 mm ²
Maximum cross section fine stranded	1 mm ²
Wire strip length	5 mm

Technical Data UL/CSA

Cross section UL	30-16 AWG
Voltage UL	300 V
Current field wiring	10 A
Current factory wiring	10 A
Cross section CSA	30-16 AWG
Voltage CSA	300 V
Current CSA	10 A

Other

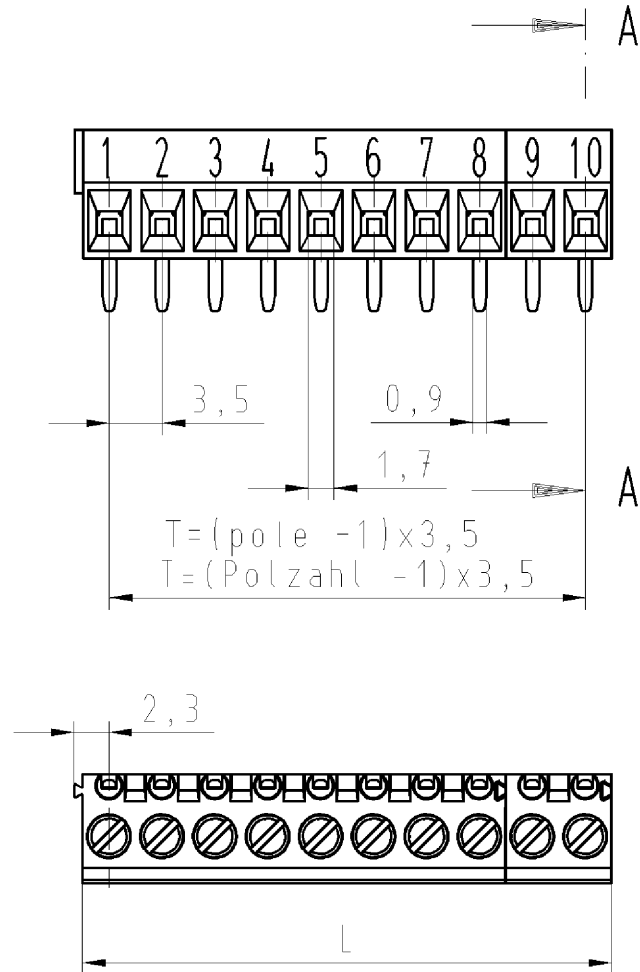
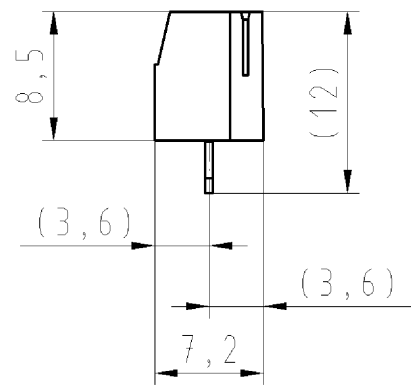
Type of insulation material	Thermoplastic
Color	Grey
Height	8.5 mm
Length	14 mm
Depth	7.2 mm
Material attachment screw	Steel
Material contact base	CuSn
Material contact surface	Sn

Classification

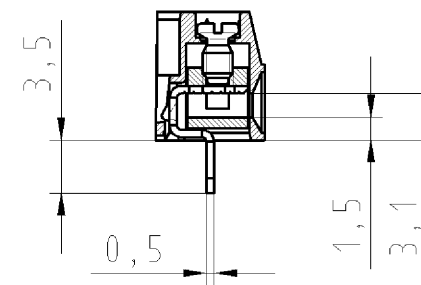
ECLASS 11	
ECLASS 8.1	27440401
ETIM 7.0	EC002643
ETIM 6.0	EC002643
ETIM 5.0	EC002643
ETIM 4.0	EC002643

Product compliance

ROHS conformity status	Compliant/Exempted
ROHS exceptions	III-6(c)
REACH-SVHC conformity status	Duty-To-Declare
REACH-SVHC substances	Lead
REACH-SVHC CAS numbers	7439-92-1



Schnitt A-A
section A-A



25.194.2453.0	8593/24	24	80,5	84
25.194.2353.0	8593/23	23	77	80,5
25.194.2253.0	8593/22	22	73,5	77
25.194.2153.0	8593/21	21	70	73,5
25.194.2053.0	8593/20	20	66,5	70
25.194.1953.0	8593/19	19	63	66,5
25.194.1853.0	8593/18	18	59,5	63
25.194.1753.0	8593/17	17	56	59,5
25.194.1653.0	8593/16	16	52,5	56
25.194.1553.0	8593/15	15	49	52,5
25.194.1453.0	8593/14	14	45,5	49
25.194.1353.0	8593/13	13	42	45,5
25.194.1253.0	8593/12	12	38,5	42
25.194.1153.0	8593/11	11	35	38,5
25.194.1053.0	8593/10	10	31,5	35
25.194.0953.0	8593/ 9	9	28	31,5
25.194.0853.0	8593/ 8	8	24,5	28
25.194.0753.0	8593/ 7	7	21	24,5
25.194.0653.0	8593/ 6	6	17,5	21
25.194.0553.0	8593/ 5	5	14	17,5
25.194.0453.0	8593/ 4	4	10,5	14
25.194.0353.0	8593/ 3	3	7	10,5
25.194.0253.0	8593/ 2	2	3,5	7
Teile-Nr. part-Nr.	Typ type	Polzahl Pole	T	L
			T	L

gezeichnete Ausführung
10-polig
drawn version
10-poles
25.194.0953.0

Weitere Daten siehe Katalog
further data see catalog

Tolerierung nach DIN 7167/Tolerance system acc. to DIN 7167. (This DIN-standard describes the envelope principle. According to the envelope principle the deviations of form and parallelism are limited by the size tolerances).		ja/yes <input checked="" type="checkbox"/> Stoffverbots- und Deklarationsliste nach UU-TQM-05/03 ist einzuhalten. Conformity with Wieland document UU-TQM-05/03 (list of prohibited / declarable hazardous substances) to be declared!	
Freitoleranz nach General tolerance		CAD - Zeichnung, keine manuellen Änderungen CAD - drawing, no manual modifications allowed	
1. Verwendung: First Use:		Blatt: 1 von 1 Sheet: of 1	
Zeichnung Nr./Drawing No.		Index	
T		25.194.0253.0 01K	
Maße in mm/Dimensions are in mm			
Ersatz für/Replacement for: -		Type	
8593/..		Benennung/Title	
LP_KLEMME		Rastermaß/pitch 3,50/3,81mm PCB terminal	
Elektrische Verbindungen		wieland	
Index		Datum / Blatt Date / Sheet	
Änderung/Revision		Maßstab/Scale	
.7		2:1	
.1		Vol.	
.0		Farbe: colour:	
.F		Bedruckung: schwarz printing: black	
		Bedruckung: weiß printing: white	
		Bedruckung: grün printing: black	

These dimensions will be especially checked at delivery
Only inspection dimensions
Mit/with circled dimensions are only valid for internal use

Diese Maße werden bei Abnahme besonders geprüft
Ausschließlich Prüfmaße
Mit/with circled dimensions are only for internal use

Weitergabe sowie Vervielfältigung dieses Dokuments, Verwertung und Mitteilung seines Inhalts sind verboten, soweit nicht ausdrücklich gestattet. The reproduction, distribution and utilization of this document as well as the communication of its contents to others without express authorization is prohibited.

251940253001K_4_CADW1044_Schnitt: 2006-06-01/T: 1:09:37 1.000