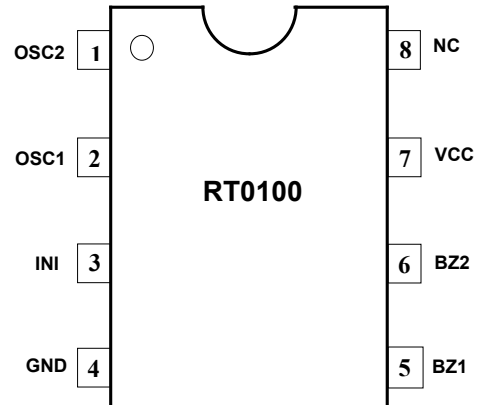


**SINGLE TONE SIREN/ALARM SOUND GENERATOR**

The RT0100 is a CMOS design for single tone alarm sound application.

**FEATURES :**

1. Auto Power down function.
2. Low Operating Voltage 2V~5V.
3. CMOS process.
4. On-chip RC oscillator.
5. Low stand by current.

**PIN DIAGRAM****PIN OUT AND DESCRIPTION**

Symbol	Description	PIN	I/P, O/P
OSC2	Oscillator pin	1	I/P
OSC1	Oscillator pin	2	O/P
INI	An internal pull-up resistor. Might disable BZ1, BZ2 when connected to GND.	3	I/P
GND	Ground	4	
BZ1	Audio output	5	O/P
BZ2	Audio output	6	O/P
VCC	Power	7	
NC	No connecting	8	

# ELECTRICAL CHARACTERISTICS

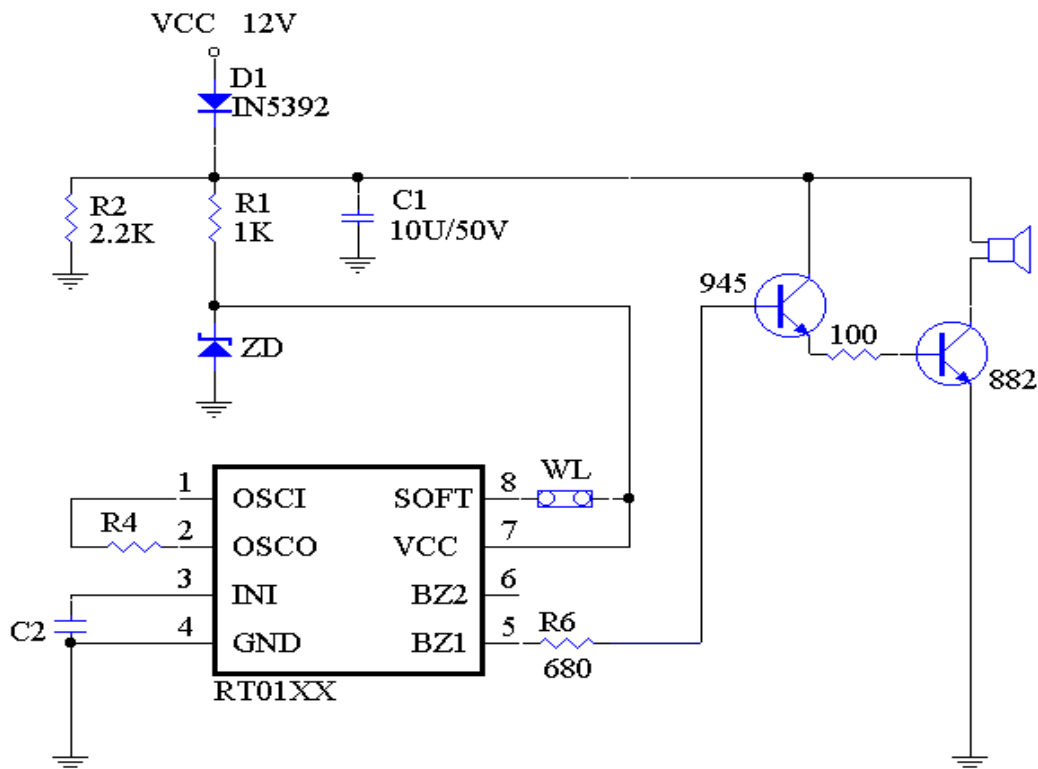
VCC=3V, Temp. =25°C

Parameter	Symbol	Min.	Typ.	Max.	Unit
Operating Voltage	VCC	2.0	3.0	5.0	V
Stand-By Current	I <sub>sb</sub>		30	50	uA
Operating Current	I <sub>op</sub>		300	500	uA
BZ1, BZ2 Driving Current	I <sub>oh</sub>	1.0			mA
	I <sub>ol</sub>	1.0			mA
Operating Frequency	F <sub>op</sub>		128		K Hz

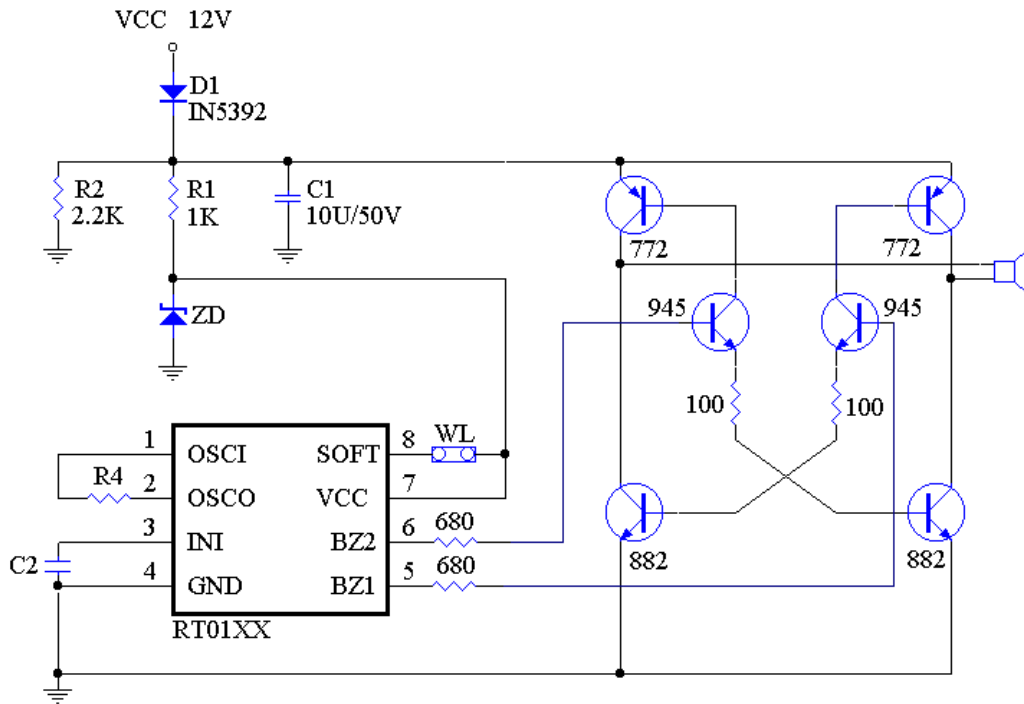
## ABSOLUTE MAXIMUM RATINGS

Symbol	Parameter	Rating	Unit
VCC	Supply Voltage	-0.3 ~ 6	V
V <sub>i</sub>	Input Voltage	-0.3 ~ V <sub>cc</sub> +0.3	V
V <sub>o</sub>	Output Voltage	-0.3 ~ V <sub>cc</sub> +0.3	V
T <sub>st</sub>	Storage Temperature	-40 ~ 125	°C
T <sub>tp</sub>	Operating Temperature	0 ~ 65	°C

## APPLICATION CIRCUIT



I C TYPE	ZD	R4	C2
RT0100/0102/0103	2.7V	100K	103
RT0104/0105/0106	4.7V	160K	N.C
RT0608/0610	3.3V	82K	103



I C TYPE	ZD	R4	C2
RT0100/0102/0103	2.7V	100K	103
RT0104/0105/0106	4.7V	160K	N.C
RT0608/0610	3.3V	82K	103