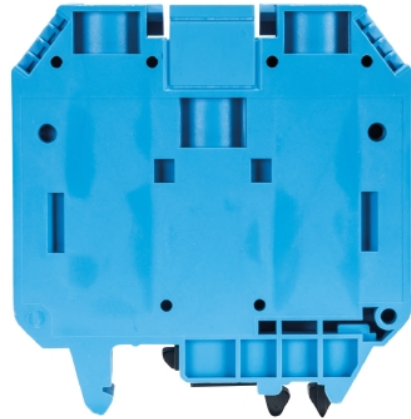


Data sheet

Commercial Art.No.: 57.535.0155.6

Feed-through terminal WKN35 / U BL / V0

Feed-through terminal with Screw connection for mounting on TS 35/ TS 32, nominal cross section: 35 mm², width: 16 mm, color: blue



Commercial Art.No.	57.535.0155.6
EAN	4015573488014
Order Unit	20

Certificates / Approvals



CAN-EX



ATEX

SEV-Ex



USA-Ex



Technical data

General

Nominal cross section	35 mm ²
Color	Blue
Number of levels	1
Number of clamp positions per level	2
Width/grid dimension	16 mm
Insulating housing	PA666
Inflammability class of insulation material acc. with UL94	V0
Explosion-tested version "Ex e"	yes
Mounting method	DIN rail (top hat rail)/G-rail
Terminal blocks for electrical installations	No

Technical data

Rated current	124 A
Rated voltage	800 V
Rated impulse voltage	8 kV
Pollution degree	3
Closing plate required	No
Type of insulation material	Thermoplastic
Length	70.6 mm

Connection Data

Connection type 1	screw connection
Connection type 2	screw connection

Minimum cross section solid	10 mm ²
Maximum cross section solid	10 mm ²
Minimum cross section fine stranded	10 mm ²
Maximum cross section fine stranded	35 mm ²
Minimum cross section stranded	16 mm ²
Maximum cross section stranded	50 mm ²
Wire strip length	18 mm
Torque conductor mounting	3 Nm

Technical Data UL/CSA

Cross section UL	10 - 1/0 AWG
Voltage UL	600 V
Current factory wiring	150 A
Current field wiring	150 A
Cross section CSA	10 - 1/0 AWG
Voltage CSA	600 V
Current CSA	150 A

Classification

ECLASS 11	
ECLASS 8.1	27141120
ETIM 7.0	EC000897
ETIM 6.0	EC000897
ETIM 5.0	EC000897
ETIM 4.0	EC000897

Product compliance

ROHS conformity status	Compliant
REACH-SVHC conformity status	Compliant

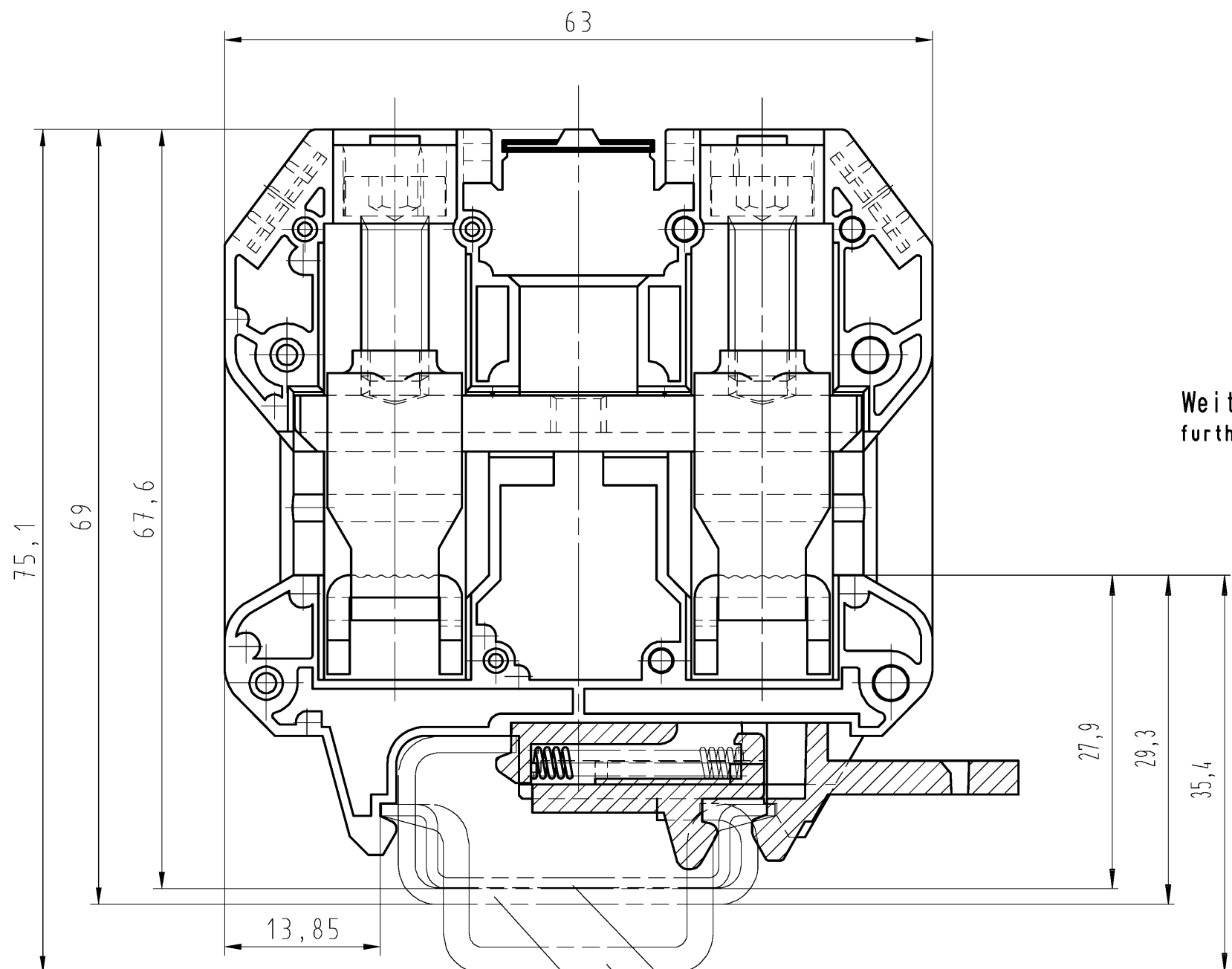
Accessories

Commercial Art.No.:	Article-type description:	Description:
Z7.285.2227.0	Insulated jumper bar IVB WKN 35 - 2	Cross connector, insulated for DIN rail terminal blocks type WKN ..., 2 - pole
Z7.285.2327.0	Insulated jumper bar IVB WKN 35 - 3	Cross connector, insulated for DIN rail terminal blocks type WKN ..., 3 - pole
Z7.285.2427.0	Insulated jumper bar IVB WKN 35 - 4	Cross connector, insulated for DIN rail terminal blocks type WKN ..., 4 - pole
Z7.285.2527.0	Insulated jumper bar IVB WKN 35 - 5	Cross connector, insulated for DIN rail terminal blocks type WKN ..., 5 - pole
Z7.285.2627.0	Insulated jumper bar IVB WKN 35 - 6	Cross connector, insulated for DIN rail terminal blocks type WKN ..., 6 - pole
Z7.285.2727.0	Insulated jumper bar IVB WKN 35 - 7	Cross connector, insulated for DIN rail terminal blocks type WKN ..., 7 - pole
Z7.285.2827.0	Insulated jumper bar IVB WKN 35 - 8	Cross connector, insulated for DIN rail terminal blocks type WKN ..., 8 - pole
Z7.285.2927.0	Insulated jumper bar IVB WKN 35 - 9	Cross connector, insulated for DIN rail terminal blocks type WKN ..., 9 - pole
Z7.285.3027.0	Insulated jumper bar IVB WKN 35 - 10	Cross connector, insulated for DIN rail terminal blocks type WKN ..., 10 -pole

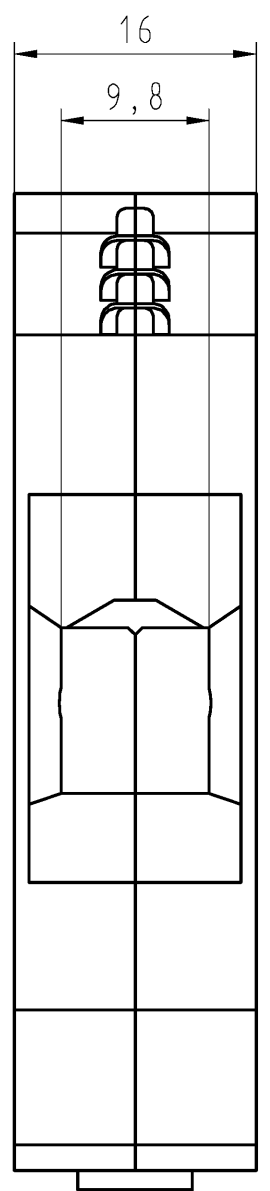
Z7.285.3127.0	Insulated jumper bar IVB WKN 35 - 11	Cross connector, insulated for DIN rail terminal blocks type WKN ..., 11 -pole
Z7.285.3227.0	Insulated jumper bar IVB WKN 35 - 12	Cross connector, insulated for DIN rail terminal blocks type WKN ..., 12 -pole
98.190.0000.0	Mounting rail TS 32 UNPERF - l:2000mm	Mounting rail G 32, unslotted, Höhe 5,5 mm, length 2 m, material steel. galv. zinc-plated and dichromated
98.190.1000.0	Mounting rail TS 32 PERF 15mm - l:2000mm	Mounting rail G 32, slotted, Höhe 15 mm, length 2 m, material steel. galv. zinc-plated and dichromated
98.210.0000.0	Mounting rail TS 32 UNPERF AL - l:2000mm	Mounting rail G 32, unslotted, Höhe 15 mm, length 2 m, material Aluminium
98.220.0000.0	Mounting rail TS 32 UNPERF CU - l:2000mm	Mounting rail G 32, unslotted, Höhe 15 mm, length 2 m, material E copper
98.300.0000.0	Mounting rail TS 35x7,5 UNPERF - l:2000mm	Mounting rail TS 35, unslotted, size 7,5 mm, length 2 m, material steel. galv. zinc-plated and dichromated
98.300.1000.0	Mounting rail TS 35x7,5 PERF 15mm - l:2000mm	Mounting rail TS 35, slotted, size 7,5 mm, length 2 m, material steel. galv. zinc-plated and dichromated
98.300.1900.0	Mounting rail TS 35x7,5 PERF 25mm - l:2000mm	Mounting rail TS 35, slotted, size 7,5 mm, length 2 m, material steel. galv. zinc-plated and dichromated
98.360.0000.0	Mounting rail TS 35x15-2,3 UNPERF - l:2000mm	Mounting rail TS 35, unslotted, size 15 mm, length 2 m, material steel. galv. zinc-plated and dichromated
98.360.0004.0	Mounting rail TS 35x15-2,3 UNPERF FZN - l:2000mm	Mounting rail TS 35, unslotted, size 15 mm, length 2 m, material steel, hot galvanized
98.370.0000.0	Mounting rail TS 35x15 UNPERF - l:2000mm	Mounting rail TS 35, unslotted, size 15 mm, length 2 m, material steel. galv. zinc-plated and dichromated
98.370.1000.0	Mounting rail TS 35x15 PERF 15mm - l:2000mm	Mounting rail TS 35, slotted, size 15 mm, length 2 m, material steel. galv. zinc-plated and dichromated
98.380.0000.0	Mounting rail TS 35x15-2,3 UNPERF CU - l:2000mm	Mounting rail TS 35, unslotted, size 15 mm, length 2 m, material E copper
07.311.7855.0	Partition TWN 35 /0	Partition for DIN rail terminal blocks type WKN 35..., color: grey
04.242.8053.0	Marking tag strips 9705 A / 8 / 10	Marking tag strips for DIN rail terminal blocks type 9700 A / 8..., 10 tags per strip, color: blue, unmarked, markable with Wieplot plotter-system

These dimensions will be especially checked at delivery
Only inspection dimensions
With /E marked dimensions are only valid for internal use

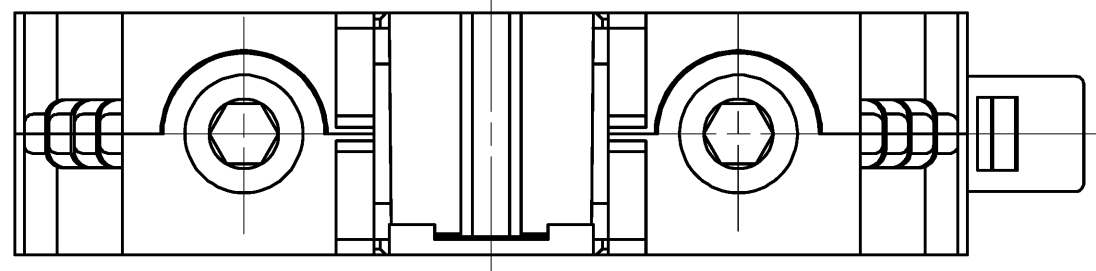
Diese Maße werden bei Abnahme besonders geprüft
Ausschließlich Prüfmaße
Mit /E gekennzeichnete Maße sind nur für interne Zwecke gültig



Weitere Daten siehe Katalog
further data see catalog



- Hutschiene EN 60715-35x7,5
mounting rail EN 60715-35x7,5
- Hutschiene EN 60715-35x15
mounting rail EN 60715-35x15
- G-Schiene EN 60715-G32
G-rail EN 60715-G32



Teile-Nr. Part-number	Typ type	Farbe colour
57.535.0153.0	WKN35/U	grau / grey
57.535.0155.0	WKN35/U/VO	grau / grey
57.535.0155.1	WKN35/U SW/VO	schwarz/black
57.535.0155.5	WKN35/U RT/VO	rot red
57.535.0155.6	WKN35/U BL/VO	blau / blue

Tolerierung Size ISO 14405 (E) / Tolerance system Size ISO 14405 (E). (This ISO-standard describes the envelope principle. According to the envelope principle the deviations of form and parallelism are limited by the size tolerances).				ja/yes <input checked="" type="checkbox"/> Stoffverbots- und Deklarationsliste nach WN 5020.010 ist einzuhalten. Conformity with Wieland document WN 5020.010 e (list of prohibited / declarable hazardous substances) to be declared!			
Freitoleranz nach General tolerance		CAD - Zeichnung, keine manuellen Änderungen CAD - drawing, no manual modifications allowed		1. Verwendung: First Use:		Blatt: 1 von 1 Sheet: of 1	
/		Werkstoff/Material		2001 Tag/Date Name		Zeichnung Nr./Drawing No. Index	
/		Maßstab/Scale		gezeichnet drawn 24.09. Bauer F.		T 57.535.0153.0 01K b	
/		x		geprüft checked - -		Maße in mm/Dimensions are in mm	
/		Vol. mm ³ Of l./Surf. mm ²		Normgepr. Stand. check - -		Ersatz für/Replacement for: -	
b 26.03.2015/		www.wieland		Type		Benennung/Title	
a 23.11.2004/		www.wieland-electric.com				DURCHGANGSKLEMME	
Index Datum / Blatt Date / Sheet						Modular terminal	
Änderung/Revision							

Weitergabe sowie Vervielfältigung dieses Dokuments, Verwertung und Mitteilung seines Inhalts sind verboten, soweit nicht ausdrücklich gestattet. Die Reproduktion, Distribution und Nutzung dieses Dokuments sowie die Kommunikation der Inhalte an Dritte ohne schriftliche Genehmigung ist untersagt.