

color: green , black
 pitch: 3.50/3.81 mm
 certification: UL, CE, VDE, CQC
 Type: male

MATERIAL:

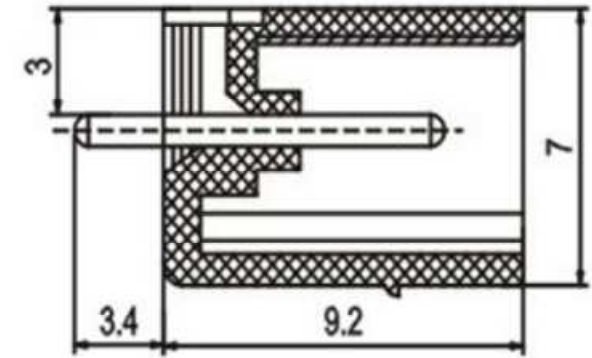
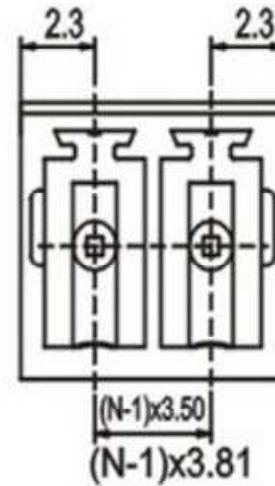
- PIN HEADER : BRASS, TIN PLATED
- HOUSING : PA66, UL94V-0

ELECTRICAL:

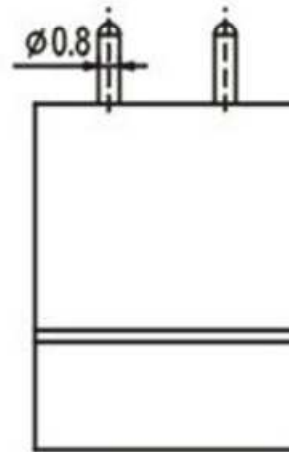
- RATED VOLTAGE : 300V
- RATED CURRENT : 8A
- CONTACT RESISTANCE : 20mΩ
- INSULATION RESISTANCE : 5000MΩ/1000V
- WITHSTANDING VOLTAGE : AC1500V/1Min

MECHANICAL:

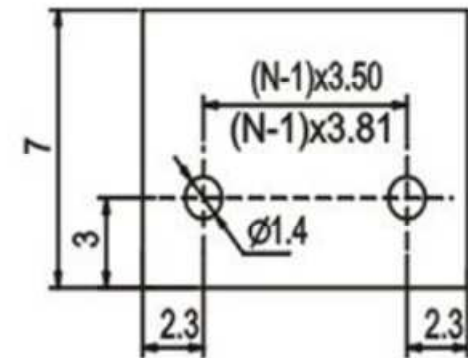
- TEMP.RANGE : -40°C...+105°C
- MAX SOLDREING : +250°C, FOR 5 SEC.



N=Number of contacts



P.C.B.LAYOUT



HOW TO ORDER

— **P** —

型号 Series No. 极数 No. of Pole 间距 Pitch 颜色 Color

1	单间距	1 灰色 Grey
	Single pitch	
2	双间距	3 黑色 Black
	Double pitch	4 绿色 Green