



**WINSTAR Display Co.,Ltd.**  
**華凌光電股份有限公司**



**Winstar Display Co., LTD**

**華凌光電股份有限公司**

WEB: <https://www.winstar.com.tw> E-mail: sales@winstar.com.tw



## SPECIFICATION

**CUSTOMER :** \_\_\_\_\_

**MODULE NO.:** WF40ETWAA6MNT0#

<p><b>APPROVED BY:</b></p> <p>( FOR CUSTOMER USE ONLY )</p>	<p><b>PCB VERSION:</b> _____</p> <p><b>DATA:</b> _____</p>
---	--

SALES BY	APPROVED BY	CHECKED BY	PREPARED BY
			葉虹蘭
<b>ISSUED DATE: 2021/05/06</b>			

TFT Display Inspection Specification: <https://www.winstar.com.tw/technology/download.html>

Precaution in use of TFT module: <https://www.winstar.com.tw/technology/download/declaration.html>



**RECORDS OF REVISION**

**DOC. FIRST ISSUE**

VERSION	DATE	REVISED PAGE NO.	SUMMARY
0	2021/04/13		First issue
A	2021/05/06		Add Pull tape

# Contents

1.Module Classification Information

2.Summary

3.General Specifications

4.Absolute Maximum Ratings

5.Electrical Characteristics

6.Interface Timing

7.Optical Characteristics

8.Interface

9.Reliability

10.Touch Panel Information

11.Contour Drawing

12.Initial Code For Reference

13.Other

# 1.Module Classification Information

W F 40 E T W A A6 M N T 0 #  
 ① ② ③ ④ ⑤ ⑥ ⑦ ⑧ ⑨ ⑩ ⑪ ⑫ ⑬

①	Brand : WINSTAR DISPLAY CORPORATION													
②	Display Type : F→TFT Type, J→Custom TFT													
③	Display Size : 4.0" TFT													
④	Model serials no.													
⑤	Backlight Type :						F→CCFL, White S→LED, High Light White			T→LED, White Z→Nichia LED, White				
⑥	LCD Polarize Type/ Temperature range/ Gray Scale Inversion Direction						A→Transmissive, N.T, IPS TFT C→Transmissive, N. T, 6:00 ; F→Transmissive, N.T,12:00 ; I→Transmissive, W. T, 6:00 K→Transflective, W.T,12:00 L→Transmissive, W.T,12:00 N→Transmissive, Super W.T, 6:00			Q→Transmissive, Super W.T, 12:00 R→Transmissive, Super W.T, O-TFT V→Transmissive, Super W.T, VA TFT W→Transmissive, Super W.T, IPS TFT X→Transmissive, W.T, VA TFT Y→Transmissive, W.T, IPS TFT Z→Transmissive, W.T, O-TFT				
⑦	A : TFT LCD B : TFT+SCREW HOLES+CONTROL BOARD C : TFT+ SCREW HOLES +A/D BOARD D : TFT+ SCREW HOLES +A/D BOARD+CONTROL BOARD E : TFT+ SCREW HOLES +POWER BOARD						F : TFT+CONTROL BOARD G : TFT+ SCREW HOLES H : TFT+D/V BOARD I : TFT+ SCREW HOLES +D/V BOARD J : TFT+POWER BD							
⑧	Resolution:													
	A	128160	B	320234	C	320240	D	480234	E	480272	F	640480	A6	480480
	G	800480	H	1024600	I	320480	J	240320	K	800600	L	240400		
	M	1024768	N	128128	P	1280800	Q	480800	R	640320	S	480128		
	T	800320	U	8001280	V	176220	W	1280398	X	1024250	Y	1920720		
	Z	800200	2	1024324	3	7201280	4	19201200	5	1366768	6	1280320		
⑨	D: Digital L : LVDS M:MIPI													
⑩	Interface:													
	N	Without control board			A	8Bit		B	16Bit		H	HDMI		
	I	I2C Interface			R	RS232		S	SPI Interface		U	USB		
⑪	TS:													
	N	Without TS				T	Resistive touch panel			C	Capacitive touch panel (G-F-F)			
	G	Capacitive touch panel (G-G)					C1	Capacitive touch panel (G-F-F)+OCA						
	C2	Capacitive touch panel (G-F-F)+OCR					G1	Capacitive touch panel (G-G)+OCA						
	G2	Capacitive touch panel (G-G)+OCR					B	CTP+GG+USB						
⑫	Version: X:Raspberry pi													
⑬	Special Code			#:Fit in with ROHS directive regulations										

## **2.Summary**

TFT 4.0" is a color active matrix thin film transistor (TFT) liquid crystal display (LCD) that uses amorphous silicon TFT as a switching device. This TFT LCD has a 4.0 (1:1) inch diagonally measured active display area with 480x480 (480 horizontal by 480 vertical pixel) resolution.

### 3.General Specifications

Item	Dimension	Unit
Size	4.0	inch
Dot Matrix	480× 3(RGB) × 480	dots
Module dimension	78.8(H) * 82.95 (W) *6.37	mm
Active area	71.856(H)*70.176 (V)	mm
Pixel pitch	0.1497(H)*0.1462(V)	mm
LCD type	TFT, Normally Black, Transmissive	
View Direction	80/80/80/80	
Aspect Ratio	1:1	
Interface	2-Lanes MIPI	
Driver IC	ST7701S or Equivalent	
Backlight Type	LED ,Normally White	
With /Without TP	With RTP	
Surface	Anti-glare	

\*Color tone slight changed by temperature and driving voltage.

## 4. Absolute Maximum Ratings

Item	Symbol	Min	Typ	Max	Unit
Operating Temperature	TOP	-30	—	+80	°C
Storage Temperature	TST	-30	—	+80	°C

Note: Device is subject to be damaged permanently if stresses beyond those absolute maximum ratings listed above

1. Temp.  $\leq 60^{\circ}\text{C}$ , 90% RH MAX. Temp.  $> 60^{\circ}\text{C}$ , Absolute humidity shall be less than 90% RH at  $60^{\circ}\text{C}$



# 5. Electrical Characteristics

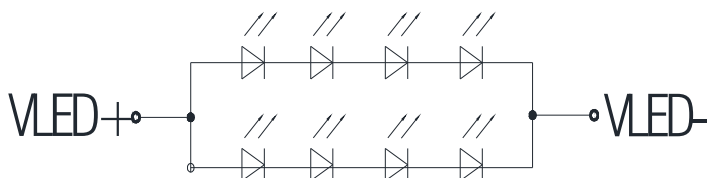
## 5.1. Typical Operation Conditions

Item	Symbol	Values			Unit	Remark
		Min.	Typ.	Max.		
Interface Supply Voltage	VCI	2.5	2.8	3.6	V	
Power voltage	IOVCC	1.65	1.8	3.3	V	
Current for Driver(White)	I <sub>VCI</sub>	-	39	58	mA	
	I <sub>IOVCC</sub>	-	11	16.5	mA	

## 5.2. Backlight Driving Conditions

Parameter	Symbol	Min.	Typ.	Max.	Unit	Remark
LED current	I <sub>LED</sub>	-	100	-	mA	
LED voltage	V <sub>LED+</sub>	10.8	12.4	13.6	V	Note 1
LED Life Time		50,000	-	-	Hr	Note 2,3,4

Note 1 : There are 1 Groups LED



CIRCUIT DIAGRAM

Note 2 : Ta = 25 °C

Note 3 : Brightness to be decreased to 50% of the initial value

Note 4 : The single LED lamp case.

# 6. Interface Timing

## 6.1. MIPI Interface Characteristics High Speed Mode

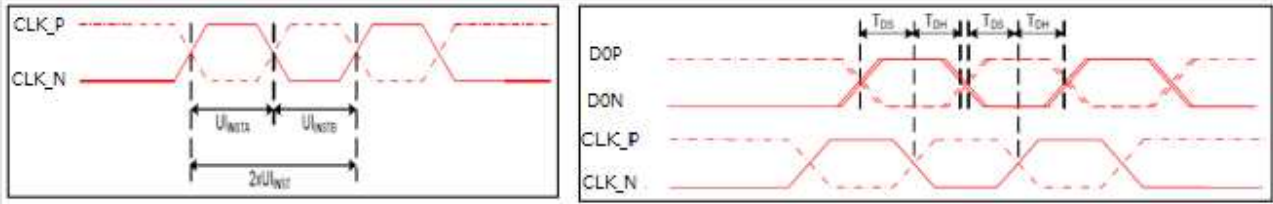


Figure 1 DSI clock channel timing  
 Figure 2 Rising and falling time on clock and data channel  
 $VDDI=1.8, VDD=2.8, AGND=DGND=0V, Ta=25^{\circ}C$

Signal	Symbol	Parameter	MIN	MAX	Unit	Description
CLK_P/N	$2xUI_{INSTA}$	Double UI instantaneous	4	25	ns	
CLK_P/N	$UI_{INSTA}$ $UI_{INSTB}$	UI instantaneous halves	2	12.5	ns	$UI = UI_{INSTA} = UI_{INSTB}$
D1P/N	$t_{DS}$	Data to clock setup time	0.15	-	UI	
D1P/N	$t_{DH}$	Data to clock hold time	0.15	-	UI	

Table 1 Mipi Interface-High Speed Mode Timing Characteristics

## Low Power Mode

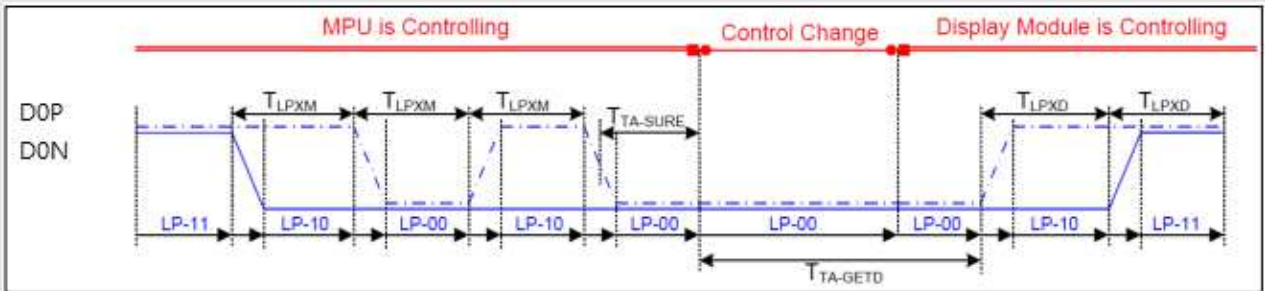


Figure 3 Bus Turnaround (BTA) from display module to MPU Timing

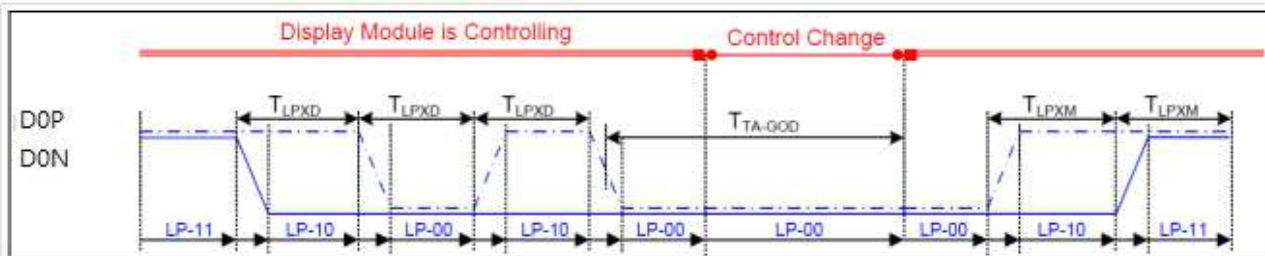


Figure 4 Bus Turnaround (BTA) from MPU to display module Timing

Signal	Symbol	Parameter	MIN	MAX	Unit	Description
D0P/N	TLPXM	Length of LP-00, LP-01, LP-10 or LP-11 periods MPU → Display Module	50	75	ns	Input
D0P/N	TLPXD	Length of LP-00, LP-01, LP-10 or LP-11 periods MPU → Display Module	50	75	ns	Output
D0P/N	TTA-SURED	Time-out before the MPU start driving	T <sub>LPXD</sub>	2xT <sub>LPXD</sub>	ns	Output
D0P/N	TTA-GETD	Time to drive LP-00 by display module	5xT <sub>LPXD</sub>		ns	Input
D0P/N	TTA-GOD	Time to drive LP-00 after turnaround request-MPU	4xT <sub>LPXD</sub>		ns	Output

Table 2 Mipi Interface Low Power Mode Timing Characteristics

### DSI Bursts Mode

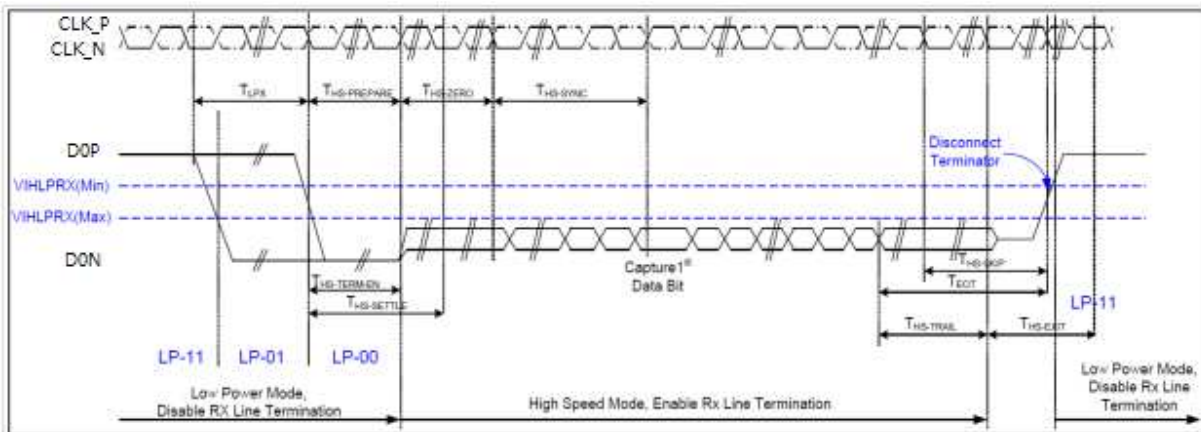


Figure 5 Data lanes-Low Power Mode to/from High Speed Mode Timing

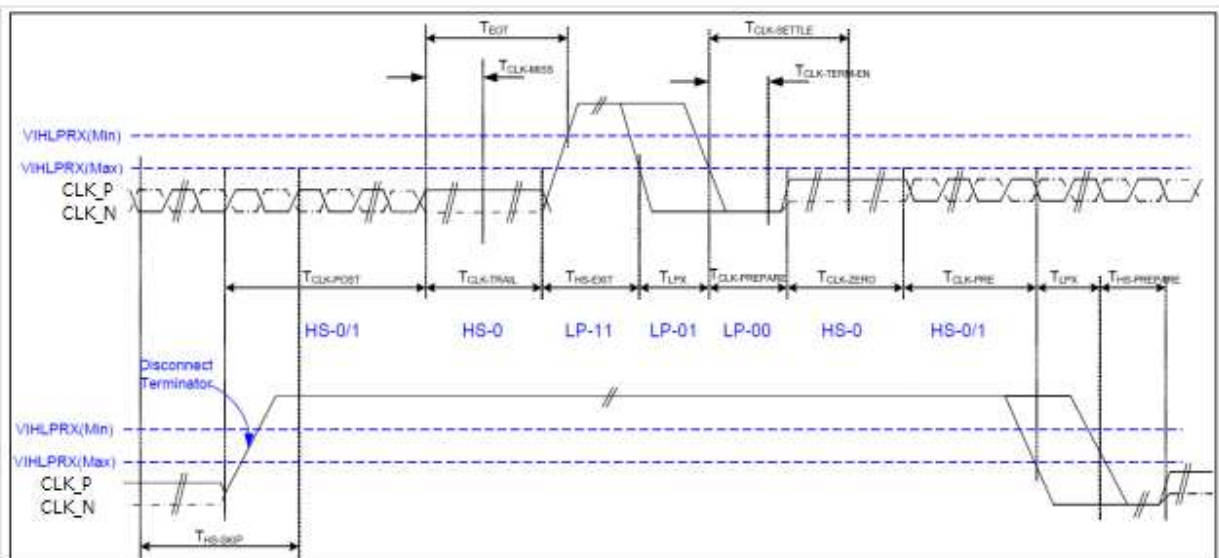
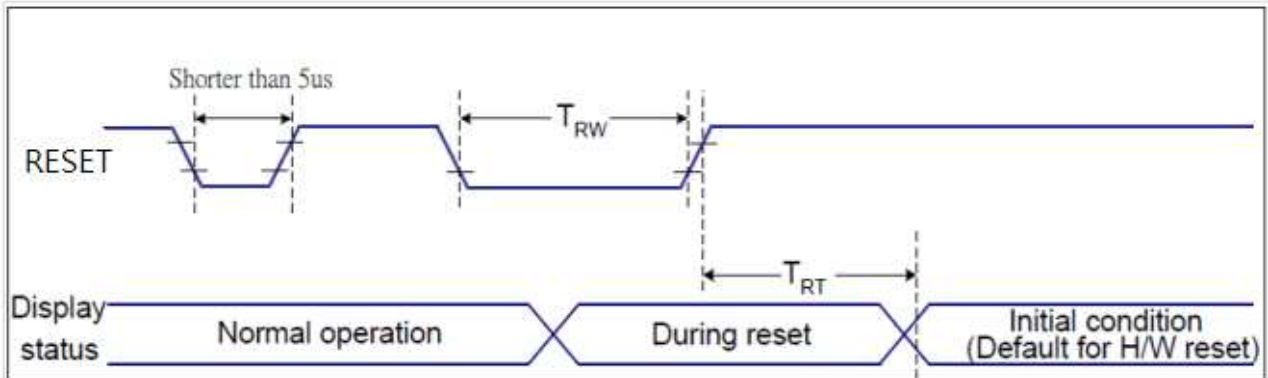


Figure 6 Clock lanes- High Speed Mode to/from Low Power Mode Timing

VDDI=1.8, VDD=2.8, AGND=DGND=0V, Ta=25°C

Signal	Symbol	Parameter	MIN	MAX	Unit	Description
Low Power Mode to High Speed Mode Timing						
D1P/N	TLPX	Length of any low power state period	50	-	ns	Input
D1P/N	THS-PREPARE	Time to drive LP-00 to prepare for HS transmission	40+4 UI	85+6 UI	ns	Input
D1P/N	THS-TERM-EN	Time to enable data receiver line termination measured from when Dn crosses VILMAX	-	35+4 UI	ns	Input
D1P/N	THS-PREPARE + THS-ZERO	THS-PREPARE + time to drive HS-0 before the sync sequence	140+ 10UI	-	ns	Input
High Speed Mode to Low Power Mode Timing						
D1P/N	THS-SKIP	Time-out at display module to ignore transition period of EoT	40	55+4 UI	ns	Input
D1P/N	THS-EXIT	Time to drive LP-11 after HS burst	100	-	ns	Input
D1P/N	THS-TRAIL	Time to drive flipped differential state after last payload data bit of a HS transmission burst	60+4 UI	-	ns	Input
High Speed Mode to/from Low Power Mode Timing						
CLK_P/N	TCLK-POS	Time that the MPU shall continue sending HS clock after the last associated data lane has transition to LP mode	60+5 2UI	-	ns	Input
CLK_P/N	TCLK-TRAIL	Time to drive HS differential state after last payload clock bit of a HS transmission burst	60	-	ns	Input
CLK_P/N	THS-EXIT	Time to drive LP-11 after HS burst	100	-	ns	Input
CLK_P/N	TCLK-PREPARE	Time to drive LP-00 to prepare for HS transmission	38	95	ns	Input
CLK_P/N	TCLK-TERM-EN	Time-out at clock lan display module to enable HS transmission	-	38	ns	Input
CLK_P/N	TCLK-PREPARE + TCLK-ZERO	Minimum lead HS-0 drive period before starting clock	300	-	ns	Input
CLK_P/N	TCLK-PRE	Time that the HS clock shall be driven prior to any associated data lane beginning the transition from LP to HS mode	8UI	-	ns	Input
CLK_P/N	TEOT	Time form start of TCLK-TRAIL period to start of LP-11 state	-	105n s+12 UI	ns	Input

## 6.2. Reset Timing



**Figure 6 Reset Timing**

$V_{DDI}=1.8, V_{DD}=2.8, A_{GND}=D_{GND}=0V, T_a=25^\circ C$

Related Pins	Symbol	Parameter	MIN	MAX	Unit
RESET	TRW	Reset pulse duration	10	-	us
	TRT	Reset cancel	-	5 (Note 1, 5)	ms
				120 (Note 1, 6, 7)	ms

**Table 3 Reset Timing**

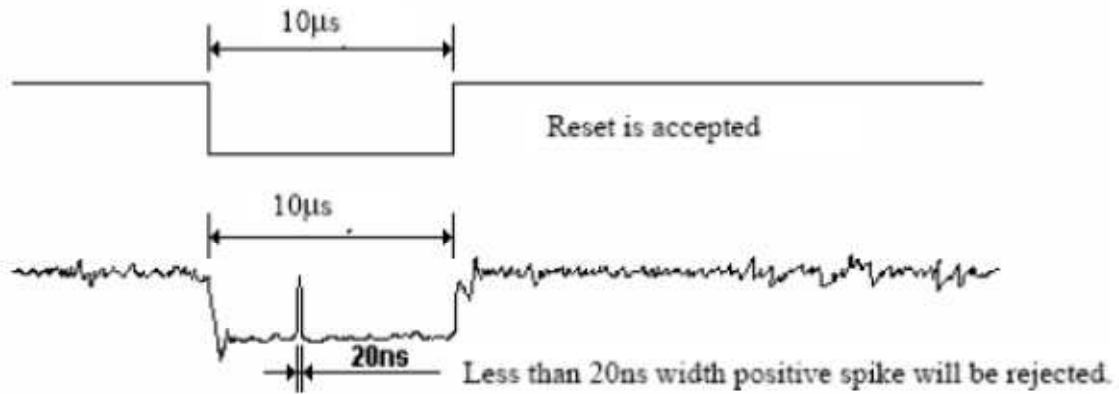
Notes:

1. The reset cancel includes also required time for loading ID bytes, VCOM setting and other settings from NVM (or similar device) to registers. This loading is done every time when there is HW reset cancel time ( $t_{RT}$ ) within 5 ms after a rising edge of RESX.
2. Spike due to an electrostatic discharge on RESX line does not cause irregular system reset according to the table below:

RESET Pulse	Action
Shorter than 5us	Reset Rejected
Longer than 9us	Reset
Between 5us and 9us	Reset starts

3. During the Resetting period, the display will be blanked (The display is entering blanking sequence, which maximum time is 120 ms, when Reset Starts in Sleep Out –mode. The display remains the blank state in Sleep In –mode.) and then return to Default condition for Hardware Reset.

4. Spike Rejection also applies during a valid reset pulse as shown below:



5. When Reset applied during Sleep In Mode.
6. When Reset applied during Sleep Out Mode.
7. It is necessary to wait 5msec after releasing RESX before sending commands. Also Sleep Out command cannot be sent for 120msec.

# 7. Optical Characteristics

Item	Symbol	Condition.	Min	Typ.	Max.	Unit	Remark	
Response time	Tr+ Tf	$\theta=0^\circ$ 、 $\Phi=0^\circ$	-	25	35	.ms	Note 3	
Contrast ratio	CR	At optimized viewing angle	640	800	-	-	Note 4	
Color Chromaticity	White	Wx	$\theta=0^\circ$ 、 $\Phi=0$	0.251	0.301	0.351		Note 2,6,7
		Wy		0.277	0.327	0.377		
Viewing angle	Hor.	$\Theta_R$	$CR \geq 10$	70	80	-	Deg.	Note 1
		$\Theta_L$		70	80	-		
	Ver.	$\Phi_T$		70	80	-		
		$\Phi_B$		70	80	-		
Brightness	-	-	250	350	-	cd/m <sup>2</sup>	Center of display	
Uniformity	(U)	-	75	-	-	%	Note 5	

Ta=25±2°C

Note 1: Definition of viewing angle range

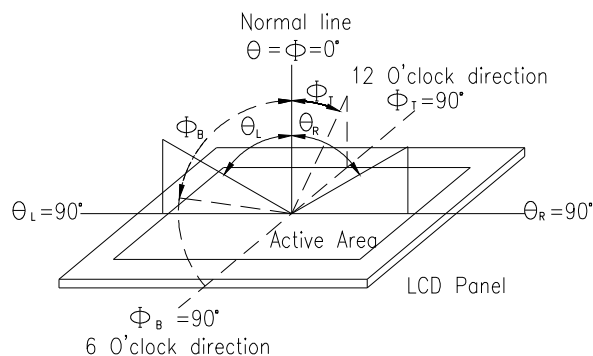


Fig. 7.1. Definition of viewing angle

Note 2: Test equipment setup:

After stabilizing and leaving the panel alone at a driven temperature for 10 minutes, the measurement should be executed. Measurement should be executed in a stable, windless, and dark room. Optical specifications are measured by Topcon BM-7or BM-5 luminance meter 1.0° field of view at a distance of 50cm and normal direction.

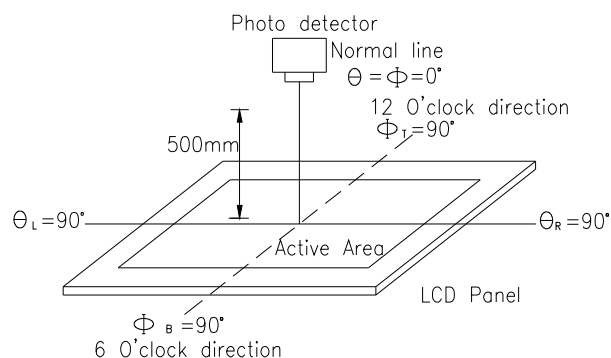
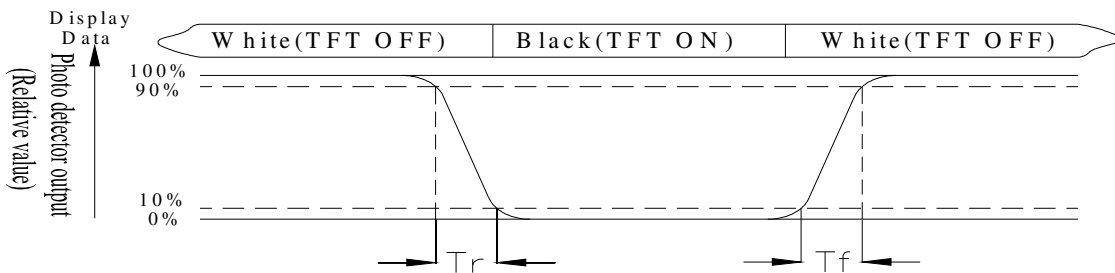


Fig. 7.2. Optical measurement system setup

Note 3: Definition of Response time:

The response time is defined as the LCD optical switching time interval between “White” state and “Black” state. Rise time,  $T_r$ , is the time between photo detector output intensity changed from 90% to 10%. And fall time,  $T_f$ , is the time between photo detector output intensity changed from 10% to 90%



Note 4: Definition of contrast ratio:

The contrast ratio is defined as the following expression.

$$\text{Contrast ratio (CR)} = \frac{\text{Luminance measured when LCD on the "White" state}}{\text{Luminance measured when LCD on the "Black" state}}$$

Note 5: Definition of Luminance Uniformity

Active area is divided into 9 measuring areas (reference the picture in below). Every measuring point is placed at the center of each measuring area.

Luminance Uniformity (U) =  $L_{\min}/L_{\max} \times 100\%$

L = Active area length

W = Active area width

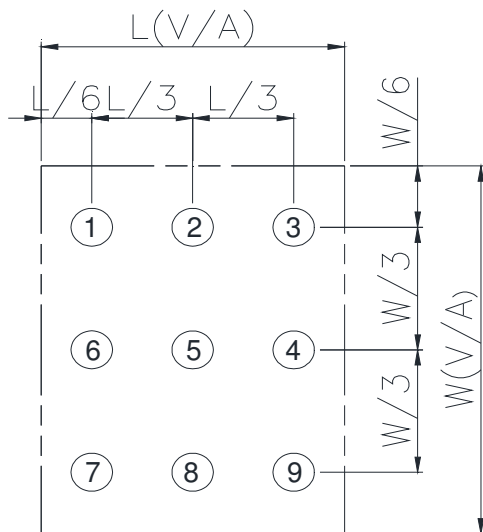


Fig 7.3. Definition of uniformity

Note 6: Definition of color chromaticity (CIE 1931)

Color coordinates measured at the center point of LCD

Note 7: Measured at the center area of the panel when all the input terminals of LCD panel are electrically opened.



# 8.Interface

## 8.1. LCM PIN Definition

Pin	Symbol	Function
1	GND	Power ground
2	YU	Top electrode
3	XL	Left electrode
4	YD	Bottom electrode
5	XR	Right electrode
6	GND	Power ground
7	D0N	MIPI DSI differential data pair (Data lane 0)
8	D0P	
9	GND	Power ground
10	CLK_N	MIPI DSI differential clock pair
11	CLK_P	
12	GND	Power ground
13	D1N	MIPI DSI differential data pair(Data lane 1)
14	D1P	
15	GND	Power ground
16	IOVCC	I/O and interface power supply (1.8V)
17	RESET	Reset input
18	TE	Tearing effect output pin.
19	VCI	Analog power supply
20	VCI	Analog power supply
21	NC	No connect
22	VLED-	Power for LED backlight cathode
23	VLED+	Power for LED backlight anode
24	GND	Power ground

# 9. Reliability

Content of Reliability Test (Super Wide temperature, -30°C ~80°C)

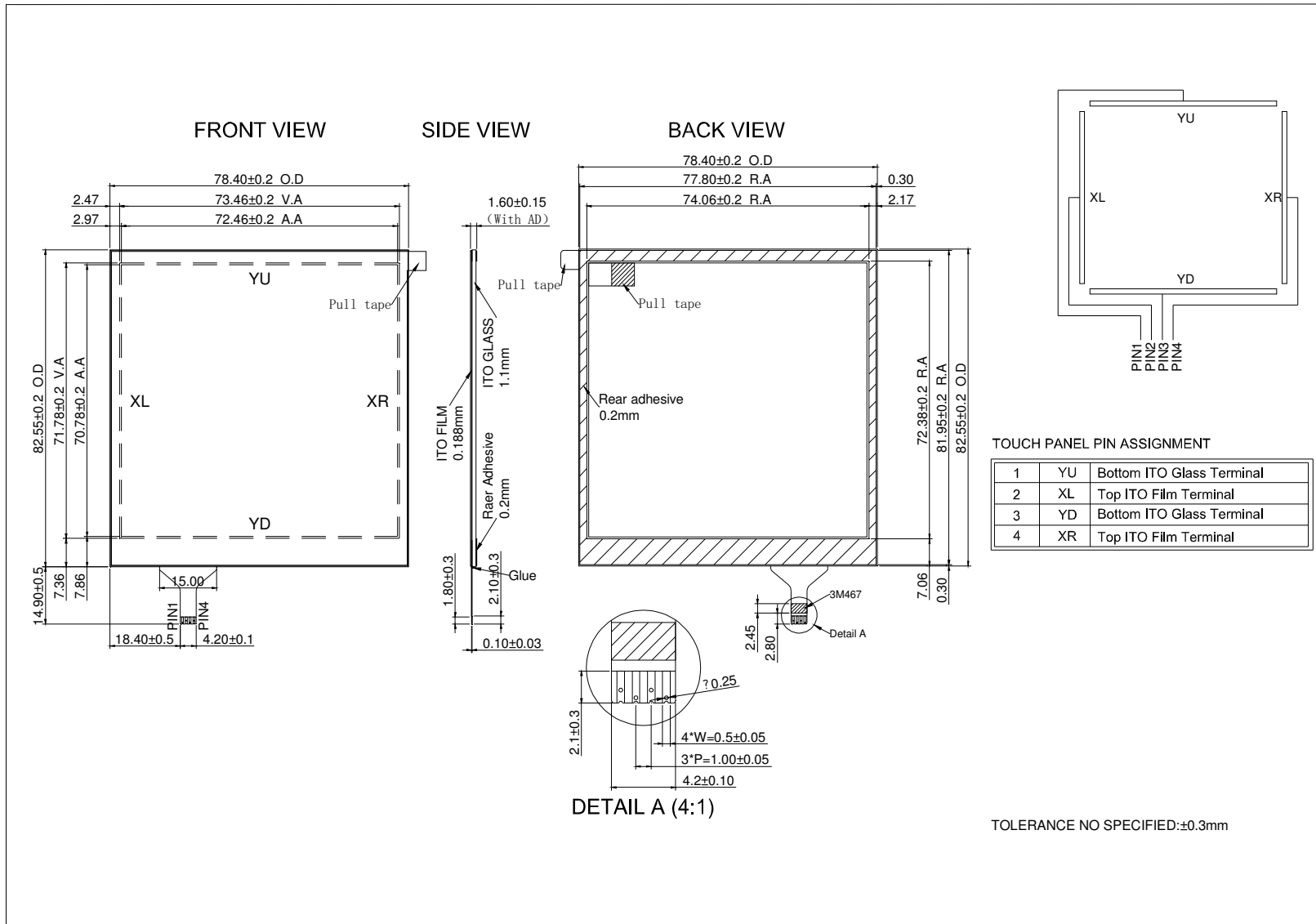
Environmental Test			
Test Item	Content of Test	Test Condition	Note
High Temperature storage	Endurance test applying the high storage temperature for a long time.	80°C 200hrs	2
Low Temperature storage	Endurance test applying the low storage temperature for a long time.	-30°C 200hrs	1,2
High Temperature Operation	Endurance test applying the electric stress (Voltage & Current) and the thermal stress to the element for a long time.	80°C 200hrs	—
Low Temperature Operation	Endurance test applying the electric stress under low temperature for a long time.	-30°C 200hrs	1
High Temperature/ Humidity storage	The module should be allowed to stand at 60°C, 90%RH max	60°C, 90%RH 96hrs	1,2
Thermal shock resistance	The sample should be allowed stand the following 10 cycles of operation <div style="text-align: center;"> <p style="margin: 0;">-30°C    25°C    80°C</p> <p style="margin: 0;">30min    5min    30min</p> <p style="margin: 0;">1 cycle</p> </div>	-30°C/80°C 10 cycles	—
Vibration test	Endurance test applying the vibration during transportation and using.	Total fixed amplitude : 1.5mm Vibration Frequency : 10~55Hz One cycle 60 seconds to 3 directions of X,Y,Z for Each 15 minutes	3
Static electricity test	Endurance test applying the electric stress to the terminal.	VS=±600V(contact) , ±800v(air), RS=330Ω CS=150pF 10 times	—

Note1: No dew condensation to be observed.

Note2: The function test shall be conducted after 4 hours storage at the normal Temperature and humidity after remove from the test chamber.

Note3: The packing have to including into the vibration testing.

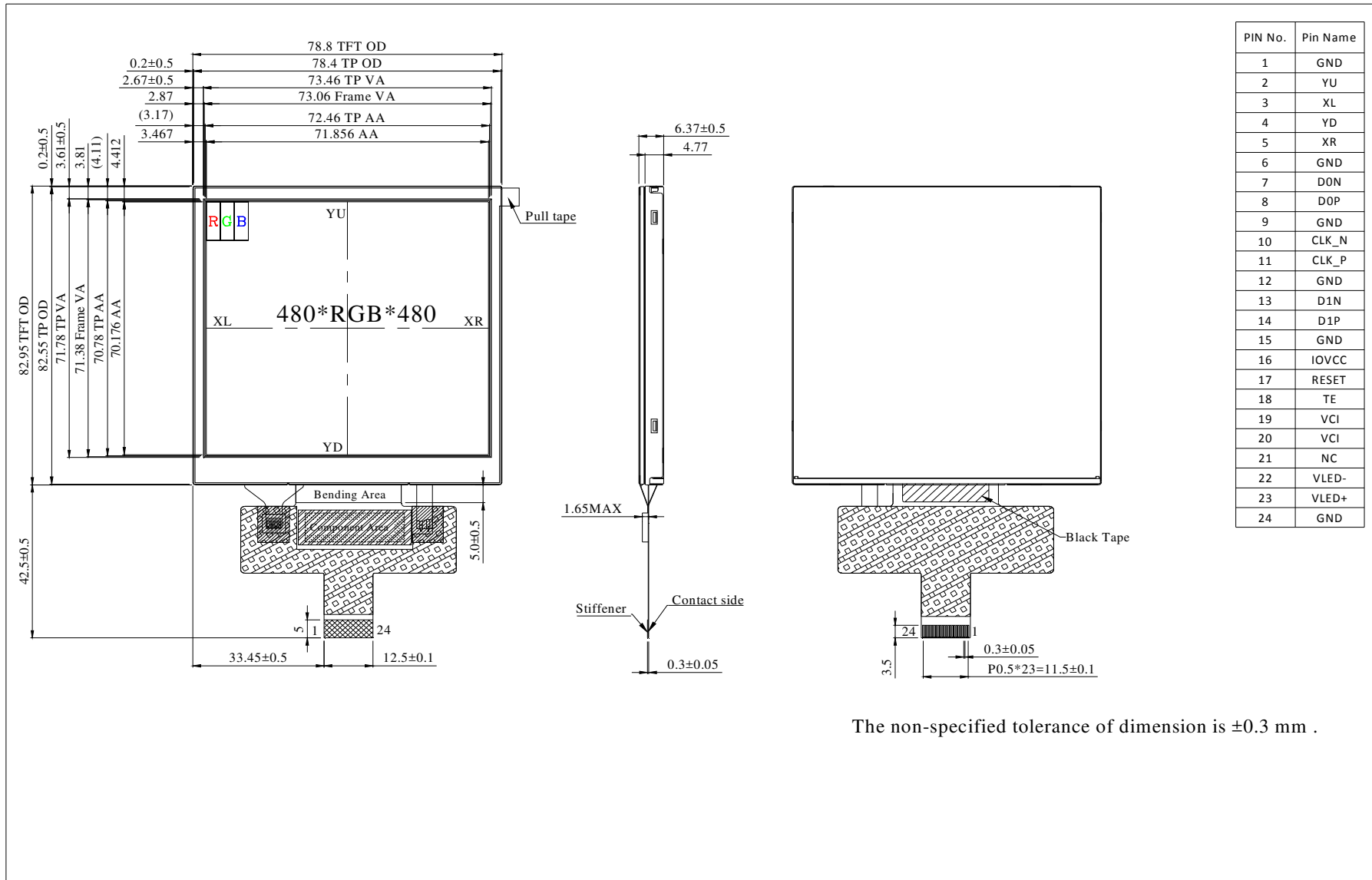
# 10.Touch Panel Information



### 10.1. Resistance Touch Panel General Specifications

Item	Description
Driving condition	DC 5V Max
Operating force	<100g
Linearity	≤1.5%
Insulating resistance	≥10MΩ(DC 25V)
Light transparence	70%
Structure type	ITO Film+ITO Glass(1.1mm)
Surface Hardness	≥3H
Pen Hitting Durability (with the silicon rubber)	> 1000,000 times
X Axis resistance	200~600Ω
Y Axis resistance	200~600Ω

# 11. Contour Drawing



PIN No.	Pin Name
1	GND
2	YU
3	XL
4	YD
5	XR
6	GND
7	DON
8	DOP
9	GND
10	CLK_N
11	CLK_P
12	GND
13	D1N
14	D1P
15	GND
16	IOVCC
17	RESET
18	TE
19	VCI
20	VCI
21	NC
22	VLED-
23	VLED+
24	GND

The non-specified tolerance of dimension is ±0.3 mm .

# 12.Initial Code For Reference

External system porch setting:125>VBP $\geq$ 17, VFP $\geq$ 20

Two data lanes / maximum speed 550Mbps

```
Void ST7701S_PanellInitialCode(void)
{
//-----Reset Sequence-----//
LCD_Nreset(1);
Delaysms (1); //Delay 1ms
LCD_Nreset(0);
Delaysms (1); //Delay 1ms
LCD_Nreset(1);
Delaysms (120); //Delay 120ms
WriteComm (0x11);
Delaysms (120); //Delay 120ms

//-----Initial setting-----//
WriteComm (0xFF);
WriteData (0x77);
WriteData (0x01);
WriteData (0x00);
WriteData (0x00);
WriteData (0x10);

WriteComm (0xC0);
WriteData (0x3B);
WriteData (0x00);

WriteComm (0xC1);
WriteData (0x0D);
WriteData (0x02);

WriteComm (0xC2);
WriteData (0x21);
WriteData (0x08);

WriteComm (0xCC);
WriteData (0x10);

WriteComm (0xB0);
WriteData (0x00);
WriteData (0x05);
WriteData (0x0F);
WriteData (0x0D);
WriteData (0x13);
WriteData (0x07);
WriteData (0x01);
WriteData (0x08);
WriteData (0x09);
```

**WriteData (0x1E);**  
**WriteData (0x05);**  
**WriteData (0x12);**  
**WriteData (0x10);**  
**WriteData (0xA7);**  
**WriteData (0x2F);**  
**WriteData (0x18);**

**WriteComm (0xB1);**  
**WriteData (0x00);**  
**WriteData (0x0F);**  
**WriteData (0x17);**  
**WriteData (0x0C);**  
**WriteData (0x0D);**  
**WriteData (0x05);**  
**WriteData (0x01);**  
**WriteData (0x08);**  
**WriteData (0x08);**  
**WriteData (0x1E);**  
**WriteData (0x05);**  
**WriteData (0x13);**  
**WriteData (0x11);**  
**WriteData (0xA7);**  
**WriteData (0x2F);**  
**WriteData (0x18);**

**WriteComm (0xFF);**  
**WriteData (0x77);**  
**WriteData (0x01);**  
**WriteData (0x00);**  
**WriteData (0x00);**  
**WriteData (0x11);**

**WriteComm (0xB0);**  
**WriteData (0x4D);**

**WriteComm (0xB1);**  
**WriteData (0x4F);**

**WriteComm (0xB2);**  
**WriteData (0x07);**

**WriteComm (0xB3);**  
**WriteData (0x80);**

**WriteComm (0xB5);**  
**WriteData (0x47);**

**WriteComm (0xB7);**  
**WriteData (0x85);**

**WriteComm (0xB8);  
WriteData (0x21);**

**WriteComm (0xB9);  
WriteData (0x10);**

**WriteComm (0xC1);  
WriteData (0x78);**

**WriteComm (0xC2);  
WriteData (0x78);**

**WriteComm (0xD0);  
WriteData (0x88);**

**Delays (100);**

**WriteComm (0xE0);  
WriteData (0x00);  
WriteData (0x00);  
WriteData (0x02);**

**WriteComm (0xE1);  
WriteData (0x08);  
WriteData (0x00);  
WriteData (0x0A);  
WriteData (0x00);  
WriteData (0x07);  
WriteData (0x00);  
WriteData (0x09);  
WriteData (0x00);  
WriteData (0x00);  
WriteData (0x33);  
WriteData (0x33);**

**WriteComm (0xE2);  
WriteData (0x00);  
WriteData (0x00);  
WriteData (0x00);  
WriteData (0x00);  
WriteData (0x00);  
WriteData (0x00);  
WriteData (0x00);  
WriteData (0x00);  
WriteData (0x00);  
WriteData (0x00);  
WriteData (0x00);  
WriteData (0x00);  
WriteData (0x00);  
WriteData (0x00);**

**WriteComm (0xE3);**



**WriteData (0x00);**  
**WriteData (0x00);**  
**WriteData (0x33);**  
**WriteData (0x33);**

**WriteComm (0xE4);**  
**WriteData (0x44);**  
**WriteData (0x44);**

**WriteComm (0xE5);**  
**WriteData (0x0E);**  
**WriteData (0x2D);**  
**WriteData (0xA0);**  
**WriteData (0xA0);**  
**WriteData (0x10);**  
**WriteData (0x2D);**  
**WriteData (0xA0);**  
**WriteData (0xA0);**  
**WriteData (0x0A);**  
**WriteData (0x2D);**  
**WriteData (0xA0);**  
**WriteData (0xA0);**  
**WriteData (0x0C);**  
**WriteData (0x2D);**  
**WriteData (0xA0);**  
**WriteData (0xA0);**

**WriteComm (0xE6);**  
**WriteData (0x00);**  
**WriteData (0x00);**  
**WriteData (0x33);**  
**WriteData (0x33);**

**WriteComm (0xE7);**  
**WriteData (0x44);**  
**WriteData (0x44);**

**WriteComm (0xE8);**  
**WriteData (0x0D);**  
**WriteData (0x2D);**  
**WriteData (0xA0);**  
**WriteData (0xA0);**  
**WriteData (0x0F);**  
**WriteData (0x2D);**  
**WriteData (0xA0);**  
**WriteData (0xA0);**  
**WriteData (0x09);**  
**WriteData (0x2D);**  
**WriteData (0xA0);**  
**WriteData (0xA0);**  
**WriteData (0x0B);**

**WriteData (0x2D);**  
**WriteData (0xA0);**  
**WriteData (0xA0);**

**WriteComm (0xEB);**  
**WriteData (0x02);**  
**WriteData (0x01);**  
**WriteData (0xE4);**  
**WriteData (0xE4);**  
**WriteData (0x44);**  
**WriteData (0x00);**  
**WriteData (0x40);**

**WriteComm (0xEC);**  
**WriteData (0x02);**  
**WriteData (0x01);**

**WriteComm (0xED);**  
**WriteData (0xAB);**  
**WriteData (0x89);**  
**WriteData (0x76);**  
**WriteData (0x54);**  
**WriteData (0x01);**  
**WriteData (0xFF);**  
**WriteData (0xFF);**  
**WriteData (0xFF);**  
**WriteData (0xFF);**  
**WriteData (0xFF);**  
**WriteData (0xFF);**  
**WriteData (0x10);**  
**WriteData (0x45);**  
**WriteData (0x67);**  
**WriteData (0x98);**  
**WriteData (0xBA);**

**WriteComm (0xFF);**  
**WriteData (0x77);**  
**WriteData (0x01);**  
**WriteData (0x00);**  
**WriteData (0x00);**  
**WriteData (0x00);**

**WriteComm (0x11);**

**WriteComm (0x36);**  
**WriteData (0x00);**

**WriteComm (0x29);**

**}**



**1、Panel Specification :**

- 1. Panel Type :  Pass  NG , \_\_\_\_\_
- 2. View Direction :  Pass  NG , \_\_\_\_\_
- 3. Numbers of Dots :  Pass  NG , \_\_\_\_\_
- 4. View Area :  Pass  NG , \_\_\_\_\_
- 5. Active Area :  Pass  NG , \_\_\_\_\_
- 6. Operating Temperature :  Pass  NG , \_\_\_\_\_
- 7. Storage Temperature :  Pass  NG , \_\_\_\_\_
- 8. Others : \_\_\_\_\_

**2、Mechanical Specification :**

- 1. PCB Size :  Pass  NG , \_\_\_\_\_
- 2. Frame Size :  Pass  NG , \_\_\_\_\_
- 3. Material of Frame :  Pass  NG , \_\_\_\_\_
- 4. Connector Position :  Pass  NG , \_\_\_\_\_
- 5. Fix Hole Position :  Pass  NG , \_\_\_\_\_
- 6. Backlight Position :  Pass  NG , \_\_\_\_\_
- 7. Thickness of PCB :  Pass  NG , \_\_\_\_\_
- 8. Height of Frame to PCB :  Pass  NG , \_\_\_\_\_
- 9. Height of Module :  Pass  NG , \_\_\_\_\_
- 10. Others :  Pass  NG , \_\_\_\_\_

**3、Relative Hole Size :**

- 1. Pitch of Connector :  Pass  NG , \_\_\_\_\_
- 2. Hole size of Connector :  Pass  NG , \_\_\_\_\_
- 3. Mounting Hole size :  Pass  NG , \_\_\_\_\_
- 4. Mounting Hole Type :  Pass  NG , \_\_\_\_\_
- 5. Others :  Pass  NG , \_\_\_\_\_

**4、Backlight Specification :**

- 1. B/L Type :  Pass  NG , \_\_\_\_\_
- 2. B/L Color :  Pass  NG , \_\_\_\_\_
- 3. B/L Driving Voltage (Reference for LED Type) :  Pass  NG , \_\_\_\_\_
- 4. B/L Driving Current :  Pass  NG , \_\_\_\_\_
- 5. Brightness of B/L :  Pass  NG , \_\_\_\_\_
- 6. B/L Solder Method :  Pass  NG , \_\_\_\_\_
- 7. Others :  Pass  NG , \_\_\_\_\_

>> **Go to page 2** <<



Winstar      Module Number : \_\_\_\_\_

Page: 2

**5、Electronic Characteristics of Module :**

- 1. Input Voltage :                       Pass                       NG , \_\_\_\_\_
- 2. Supply Current :                       Pass                       NG , \_\_\_\_\_
- 3. Driving Voltage for LCD :            Pass                       NG , \_\_\_\_\_
- 4. Contrast for LCD :                    Pass                       NG , \_\_\_\_\_
- 5. B/L Driving Method :                Pass                       NG , \_\_\_\_\_
- 6. Negative Voltage Output :           Pass                       NG , \_\_\_\_\_
- 7. Interface Function :                  Pass                       NG , \_\_\_\_\_
- 8. LCD Uniformity :                    Pass                       NG , \_\_\_\_\_
- 9. ESD test :                            Pass                       NG , \_\_\_\_\_
- 10. Others :                               Pass                       NG , \_\_\_\_\_

**6、Summary :**

Sales signature : \_\_\_\_\_

Customer Signature : \_\_\_\_\_

Date :        /        /        \_\_\_\_\_