

Data sheet

Commercial Art.No.: 80.010.4522.0

Relay module FLARE MOVE 24V-1W-6A

relay module flare MOVE, 6,2 mm, 24V AC/DC, 1 change-over contact



| | |
|--------------------|---------------|
| Commercial Art.No. | 80.010.4522.0 |
| EAN | 4015573647671 |
| Order Unit | 10 |

Certificates / Approvals



Technical data

General

| | |
|--------------------------------|------------------|
| Connection type | screw connection |
| Number of change-over contacts | 1 |
| Detachable clamps | No |
| Drive, polarization | Polarity free |
| Drive, function | Mono stable |
| Forced-guided contacts | No |
| Complete with socket | yes |
| Degree of protection (IP) | IP20 |

Technical data

| | |
|---|---------|
| Type of excitation | AC/DC |
| Rated frequency, auxiliary-/control circuit | 50 - 60 |
| Min. rated frequency, auxiliary/control current circuit | 50 Hz |
| Max. rated frequency, auxiliary/control current circuit | 60 Hz |
| Min. nominal voltage DC | 24 V |
| Lower nominal voltage DC | 18 V |
| Upper nominal voltage DC | 28.8 V |

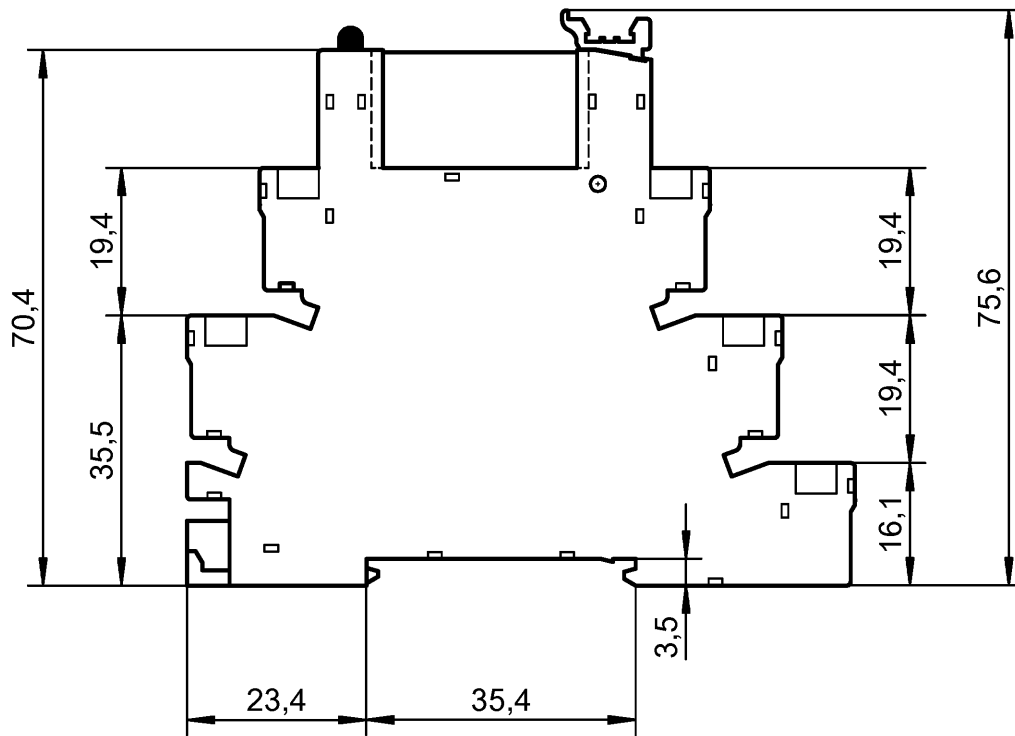
Dimensions

| | |
|--------|--------|
| Depth | 76 mm |
| Width | 6.2 mm |
| Height | 88 mm |

| | |
|------------|----------|
| ECLASS 11 | |
| ECLASS 8.1 | 27371601 |
| ETIM 7.0 | EC001437 |
| ETIM 6.0 | EC001437 |
| ETIM 5.0 | EC001437 |
| ETIM 4.0 | EC001437 |

Product compliance

| | |
|------------------------------|-----------|
| ROHS conformity status | Compliant |
| REACH-SVHC conformity status | Compliant |



Qu - PEE 12/92

| Teile-Nr. / Part No. | Typ / Type |
|----------------------|------------------------|
| 80.010.4501.0 | FLARE MOVE 12VDC-1W-6A |
| 80.010.4501.1 | FLARE MOVE 12VDC-1W-AU |
| 80.010.4502.0 | FLARE MOVE 24VDC-1W-6A |
| 80.010.4502.1 | FLARE MOVE 24VDC-1W-AU |
| 80.010.4521.0 | FLARE MOVE 12V-1W-6A |
| 80.010.4521.1 | FLARE MOVE 12V-1W-AU |
| 80.010.4522.0 | FLARE MOVE 24V-1W-6A |
| 80.010.4522.1 | FLARE MOVE 24V-1W-AU |
| 80.010.4525.0 | FLARE MOVE 115V-1W-6A |
| 80.010.4525.1 | FLARE MOVE 115V-1W-AU |
| 80.010.4526.0 | FLARE MOVE 230V-1W-6A |
| 80.010.4526.1 | FLARE MOVE 230V-1W-AU |

Weitere Angaben siehe KATALOG oder eKatalog.
Additional data see CATALOG or eCatalog.

www.wieland-electric.com
eshop.wieland-electric.com

ja/yes Stoffverbots- und Deklarationsliste nach WN 5020.010 ist einzuhalten.
Conformity with Wieland document WN 5020.010 e (list of prohibited / declarable hazardous substances) to be declared!

| | | | | | | | | | |
|--|--|---|--|--|------------------------------|---|------------------|---------------------------------|--|
| Freitoleranz nach General tolerance | | CAD-Zeichnung, keine manuellen Änderungen CAD-Drawing, no manual modifications allowed | | | 1. Verwendung: First Use: | | Blatt: Sheet: | | |
| | | Werkstoff/ Material | | 2019 | Tag/ Date | Name | | Zeichnung Nr./ Drawing No. | |
| Maßstab/Scale | | | | gezeichnet drawn | 18.02. | Koetzner | | T 80.010.4501.0 01K | |
| | | | | geprüft checked | | | | Maße in mm/Dimensions are in mm | |
| | | | | Normgepr. Stand. check | | | | | |
| Datei/ File: 018201__01K.DCD | | Ersatz für/ Replacement for: | | | | | | | |
| | | Type | | Benennung/ Title | | Teilespezifikation / Component specification | | | |
| Index | | Datum/ Blatt Date/ Sheet | | | | Relaisbaustein | | | |
| Änderung/ Revision | | | | www.wieland-electric.com | | | | | |