

Data sheet

Commercial Art.No.: 54.010.7553.0

Feed-through terminal 9700 A / 8 S35

Feed-through DIN rail terminal block with screw connection for mounting on TS 35, nominal cross section 10 mm², width 8 mm, color grey



| | |
|--------------------|---------------|
| Commercial Art.No. | 54.010.7553.0 |
| EAN | 4015573209350 |
| Order Unit | 100 |

Certificates / Approvals



Technical data

General

| | |
|--|-----------------------------------|
| Nominal cross section | 10 mm ² |
| Color | Grey |
| Number of levels | 1 |
| Number of clamp positions per level | 2 |
| Width/grid dimension | 8 mm |
| Insulating housing | PA66 |
| Inflammability class of insulation material acc. with UL94 | V2 |
| Explosion-tested version "Ex e" | No |
| Mounting method | DIN rail (top hat rail) 35/7.5 mm |
| Terminal blocks for electrical installations | yes |

Technical data

| | |
|-----------------------------|---------------|
| Rated current | 57 A |
| Rated voltage | 800 V |
| Rated impulse voltage | 8 kV |
| Pollution degree | 3 |
| Closing plate required | yes |
| Type of insulation material | Thermoplastic |
| Length | 46.6 mm |

Connection Data

| | |
|-------------------|------------------|
| Connection type 1 | screw connection |
|-------------------|------------------|

| | |
|-------------------------------------|--------------------|
| Connection type 2 | screw connection |
| Minimum cross section solid | 1 mm ² |
| Maximum cross section solid | 10 mm ² |
| Minimum cross section fine stranded | 1 mm ² |
| Maximum cross section fine stranded | 10 mm ² |
| Wire strip length | 12 mm |
| Torque conductor mounting | 1.2 Nm |

Technical Data UL/CSA

| | |
|------------------------|----------|
| Cross section UL | 18-8 AWG |
| Voltage UL | 600 V |
| Current factory wiring | 50 A |
| Current field wiring | 50 A |
| Cross section CSA | 18-8 AWG |
| Voltage CSA | 600 V |
| Current CSA | 55 A |

Classification

| | |
|------------|----------|
| ECLASS 11 | |
| ECLASS 8.1 | 27141120 |
| ETIM 7.0 | EC000897 |
| ETIM 6.0 | EC000897 |
| ETIM 5.0 | EC000897 |
| ETIM 4.0 | EC000897 |
| ETIM 3.0 | EC000897 |

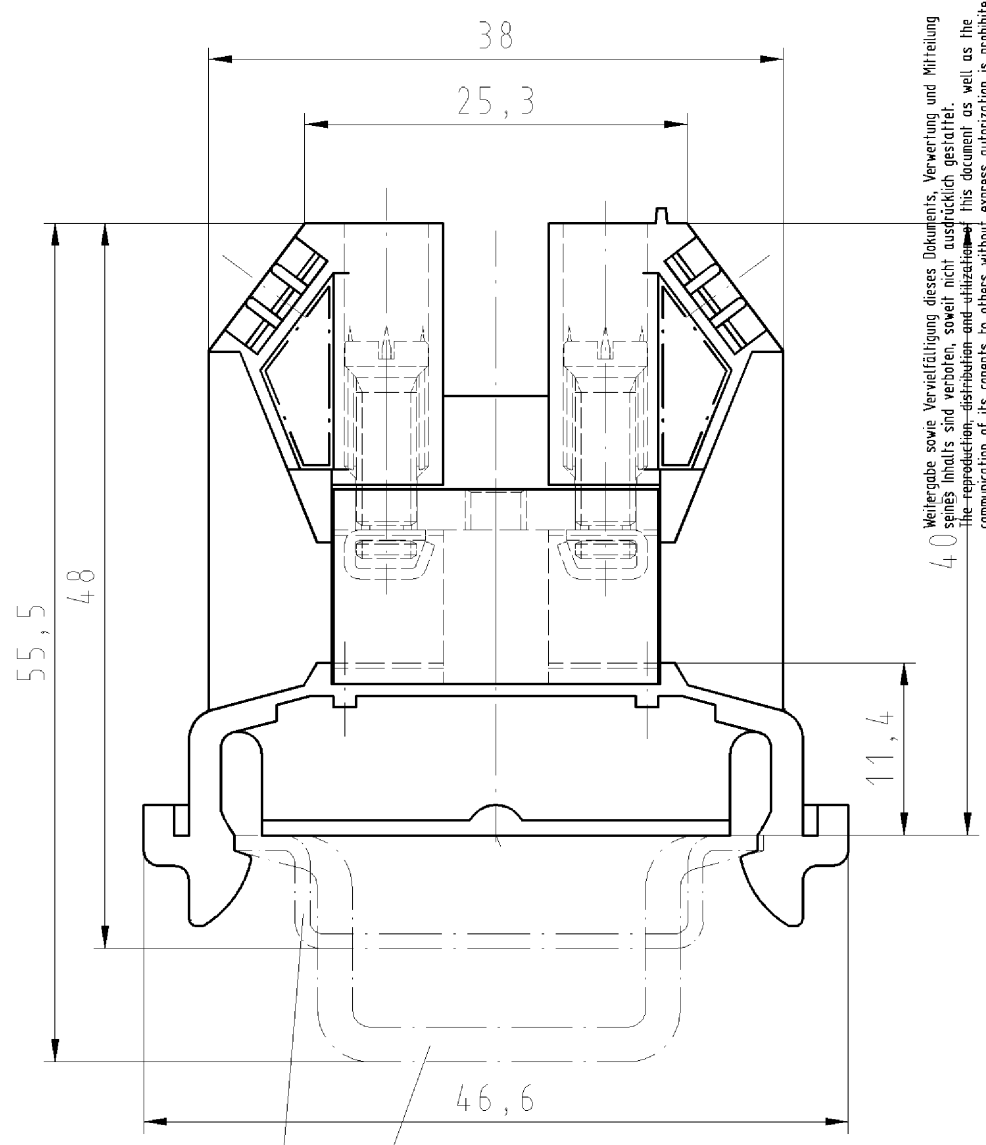
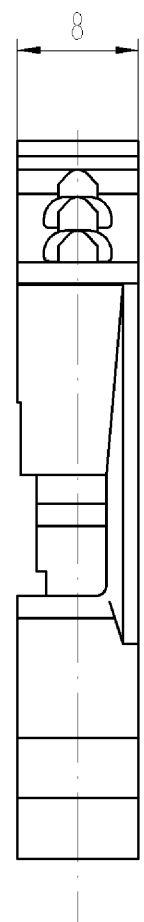
Product compliance

| | |
|------------------------------|--------------------|
| ROHS conformity status | Compliant/Exempted |
| ROHS exceptions | III-6(c) |
| REACH-SVHC conformity status | Duty-To-Declare |
| REACH-SVHC substances | Lead |
| REACH-SVHC CAS numbers | 7439-92-1 |

Accessories

| Commercial Art.No.: | Article-type description: | Description: |
|---------------------|--|--|
| Z7.212.0227.0 | Jumper bar 9703 / 8- 2 | Cross connector for DIN rail terminal blocks type 9700 A ..., 2 -pole |
| Z7.212.0327.0 | Jumper bar 9703 / 8- 3 | Cross connector for DIN rail terminal blocks type 9700 A ..., 3 -pole |
| Z7.212.0427.0 | Jumper bar 9703 / 8- 4 | Cross connector for DIN rail terminal blocks type 9700 A ..., 4 -pole |
| Z7.212.0527.0 | Jumper bar 9703 / 8- 5 | Cross connector for DIN rail terminal blocks type 9700 A ..., 5 -pole |
| 98.300.0000.0 | Mounting rail TS 35x7,5 UNPERF - l:2000mm | Mounting rail TS 35, unslotted, size 7,5 mm, length 2 m, material steel. galv. zinc-plated and dichromated |
| 98.300.1000.0 | Mounting rail TS 35x7,5 PERF 15mm - l:2000mm | Mounting rail TS 35, slotted, size 7,5 mm, length 2 m, material steel. galv. zinc-plated and dichromated |
| 98.300.1900.0 | Mounting rail TS 35x7,5 PERF 25mm - l:2000mm | Mounting rail TS 35, slotted, size 7,5 mm, length 2 m, material steel. galv. zinc-plated and dichromated |
| 98.360.0000.0 | Mounting rail TS 35x15-2,3 UNPERF - l:2000mm | Mounting rail TS 35, unslotted, size 15 mm, length 2 m, material steel. galv. zinc-plated and dichromated |
| 98.360.0004.0 | Mounting rail TS 35x15-2,3 UNPERF FZN - l:2000mm | Mounting rail TS 35, unslotted, size 15 mm, length 2 m, material steel, hot galvanized |

| | | |
|---------------|---|---|
| 98.370.0000.0 | Mounting rail TS 35x15 UNPERF - l:2000mm | Mounting rail TS 35, unslotted, size 15 mm, length 2 m, material steel. galv. zinc-plated and dichromated |
| 98.370.1000.0 | Mounting rail TS 35x15 PERF 15mm - l:2000mm | Mounting rail TS 35, slotted, size 15 mm, length 2 m, material steel. galv. zinc-plated and dichromated |
| 98.380.0000.0 | Mounting rail TS 35x15-2,3 UNPERF CU - l:2000mm | Mounting rail TS 35, unslotted, size 15 mm, length 2 m, material E copper |
| 07.310.3253.0 | End plate 9701 / 8 | End plate for DIN rail terminal blocks type 9700 A / 8..., color: grey |
| 07.310.3253.6 | End plate 9701 / 8 BLAU | End plate for DIN rail terminal blocks type 9700 A / 8..., color: blue |
| 07.310.3553.0 | Partition 9702 / 8 | Partition for DIN rail terminal blocks type 9700 A / 8..., color: grey |
| 07.310.3553.6 | Partition 9702 / 8 BLAU | Partition for DIN rail terminal blocks type 9700 A / 8..., color: blue |
| 98.300.1800.0 | Mounting rail TS 35x7,5 PERF 18mm - l:2000mm | Mounting rail TS 35, slotted, size 7,5 mm, length 2 m, material steel. galv. zinc-plated and dichromated |



Hutschiene EN 60715-35x7,5
mounting rail EN 60715-35x7,5

Hutschiene EN 60715-35x15
mounting rail EN 60715-35x15

Weitere Daten siehe Katalog
further data see catalog

| Teilenummer part-number | Farbe colour |
|----------------------------|-----------------|
| 54.010.7553.0 | grau/grey |
| 54.010.7553.1 | schwarz/black |
| 54.010.7553.6 | blau/blue |
| 54.010.7553.7 | grün /green |

Weitergabe sowie Vervielfältigung dieses Dokuments, Verwertung und Mitteilung
 seines Inhalts sind verboten, soweit nicht ausdrücklich gestattet.
 Die Reproduktion, Distribution und Weitergabe dieses Dokumentes ohne
 Kommunikation der Inhalte ist ohne schriftliche Genehmigung der Wieland
 Gruppe ist ausdrücklich untersagt.

| | | | |
|--|--|---|------------------|
| Tolerierung nach DIN 7167/Tolerance system acc. to DIN 7167. (This DIN-standard describes the envelope principle. According to the envelope principle the deviations of form and parallelism are limited by the size tolerances). | | ja/yes <input checked="" type="checkbox"/> Stoffverbots- und Deklarationsliste nach UU-TQM-05/03 ist einzuhalten. Conformity with Wieland document UU-TQM-05/03 (list of prohibited / declarable hazardous substances) to be declared! | |
| Freitoleranz nach General tolerance | | CAD - Zeichnung, keine manuellen Änderungen CAD - drawing, no manual modifications allowed | |
| 1. Verwendung: - First Use: | | Blatt: 1 von 1 Sheet: 1 of 1 | |
| Werkstoff/Material | | 2004 Tag/Date | Name |
| Maßstab/Scale 2:1 | | gezeichnet drawn | 20.09 Schmitt J. |
| | | geprüft checked | - |
| | | Normgepr. Stand. check | - |
| Vol. mm ³ Of l./Surf. mm ² | | Ersatz für/Replacement for: - | |
| | | DURCHGANGSKLEMME mit Schraubanschluss / with screw connection Modular terminal | |
| Type 9700A/ 8 S35 | | Benennung/Title | |
| a 12.03.2008/ Datum / Blatt Date / Sheet | | Zeichnung Nr./Drawing No. T 54.010.7553.0 01K a | |
| Änderung/Revision | | Maße in mm/Dimensions are in mm | |

540107553001K_4 CADW1044_treschan 2008-03-13 10:18:58 1.000