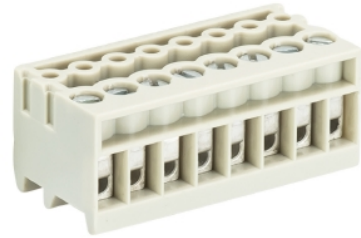


## Data sheet

Commercial Art.No.: 25.600.5253.0

Pluggable PCB Terminal 8543 / 2

Pluggable-PCB terminal, 2 poles, printed version, pitch: 3.5 mm, type of packing: carton, color: grey



|                    |               |
|--------------------|---------------|
| Commercial Art.No. | 25.600.5253.0 |
| EAN                | 4015573314221 |
| Order Unit         | 100           |

Certificates / Approvals



## Technical data

### General

|                                    |                  |
|------------------------------------|------------------|
| Modular spacing                    | 3.5 mm           |
| Connection type                    | screw connection |
| Soldering process                  | None             |
| Packaging                          | Carton           |
| Number of poles                    | 2                |
| Marking                            | yes              |
| Mating direction towards connector | 90°              |

### Technical data

|                          |                   |
|--------------------------|-------------------|
| Nominal cross section    | 1 mm <sup>2</sup> |
| Rated current            | 6 A               |
| Overvoltage Category I   | 690 V             |
| Overvoltage Category II  | 250 V             |
| Overvoltage Category III | 160               |
| Rated impulse voltage    | 2.5 kV            |
| Wire strip length        | 5 mm              |

### Connection Data

|                                     |                      |
|-------------------------------------|----------------------|
| Minimum cross section solid         | 0.14 mm <sup>2</sup> |
| Maximum cross section solid         | 1.5 mm <sup>2</sup>  |
| Minimum cross section fine stranded | 0.14 mm <sup>2</sup> |
| Maximum cross section fine stranded | 1 mm <sup>2</sup>    |
| Wire strip length                   | 5 mm                 |

### Technical Data UL/CSA

|                  |           |
|------------------|-----------|
| Cross section UL | 22-16 AWG |
| Voltage UL       | 300 V     |

|                        |           |
|------------------------|-----------|
| Current field wiring   | 10 A      |
| Current factory wiring | 10 A      |
| Cross section CSA      | 22-16 AWG |
| Voltage CSA            | 300 V     |
| Current CSA            | 10 A      |

#### Other

|                             |               |
|-----------------------------|---------------|
| Type of insulation material | Thermoplastic |
| Color                       | Grey          |
| Height                      | 11.6 mm       |
| Length                      | 7 mm          |
| Depth                       | 13 mm         |
| Material attachment screw   | Steel         |
| Material contact base       | CuZn          |
| Material contact surface    | Sn            |

#### Classification

|            |          |
|------------|----------|
| ECLASS 11  |          |
| ECLASS 8.1 | 27440402 |
| ETIM 7.0   | EC002637 |
| ETIM 6.0   | EC002637 |
| ETIM 5.0   | EC002637 |

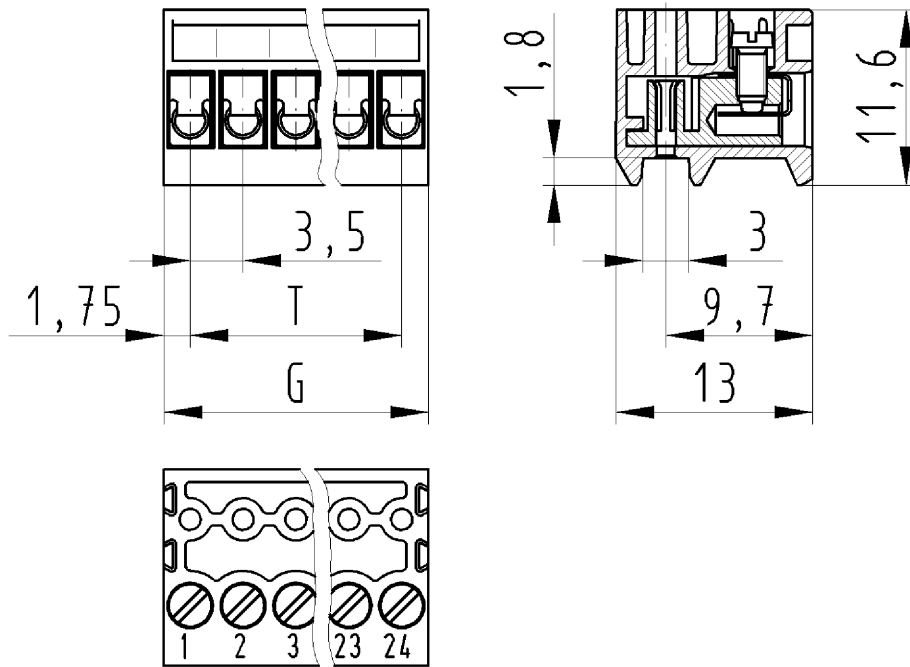
#### Product compliance

|                              |                    |
|------------------------------|--------------------|
| ROHS conformity status       | Compliant/Exempted |
| ROHS exceptions              | III-6(c)           |
| REACH-SVHC conformity status | Duty-To-Declare    |
| REACH-SVHC substances        | Lead               |
| REACH-SVHC CAS numbers       | 7439-92-1          |

#### Fits with

| Commercial Art.No.: | Article-type description:              | Description:  |
|---------------------|--|---|
| Z5.532.0225.0       | PCB pin header 8543... /2 90° D1.0/0.8 | PCB pin header, 2 poles, pitch: 3.5 mm, type of packing: carton, color:grey |
| Z5.532.3225.0       | PCB pin header 8543... /2 90° D1.0/1.0 | PCB pin header, 2 poles, pitch: 3.5 mm, type of packing: carton, color:grey |
| Z5.531.0225.0       | PCB pin header 8543... /2 D1.0/0.8     | PCB pin header, 2 poles, pitch: 3.5 mm, type of packing: carton, color:grey |
| Z5.531.3225.0       | PCB pin header 8543... /2 D1.0/1.0     | PCB pin header, 2 poles, pitch: 3.5 mm, type of packing: carton, color:grey |

für folgende Tabellen-Zchnng.:  
25.600.5253.0 8543/..



LP. STECKKLEMME  
25.600.5253.0 10W  
30.10.2007 DÜT  
M 2:1