

**FEATURES**

- For surface mounted application
- Low forward voltage drop
- High current capability
- Easy pick and place
- High surge current capability
- Plastic material used carries Underwriters Laboratory Classification 94V-0



DO-214AC (SMA)

**MECHANICAL DATA**

- Case: DO-214AC (SMA)Molded plastic
- Terminals: Pure tin plated, lead free
- Polarity: Indicated by cathode band
- Weight: 0.064 gram(approx.)



Cathode

**MAXIMUM RATINGS AND ELECTRICAL CHARACTERISTICS**

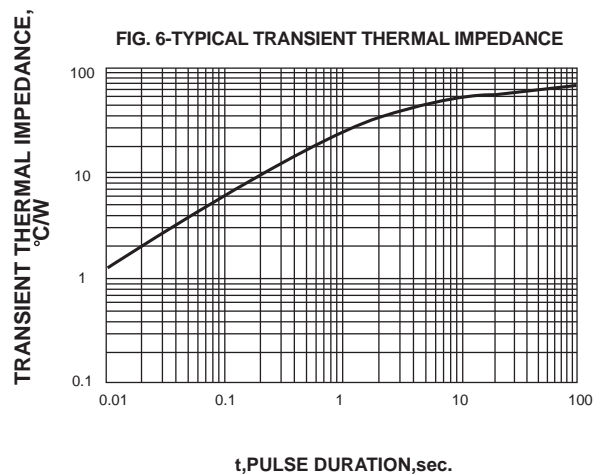
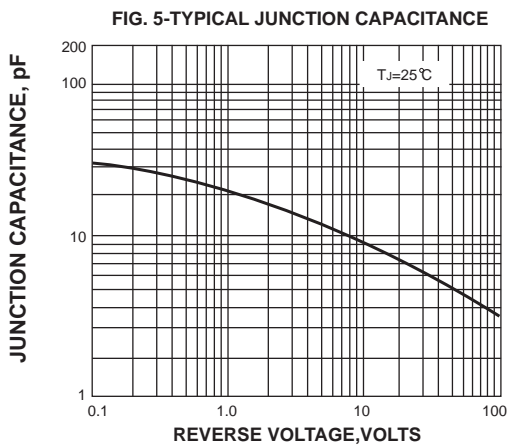
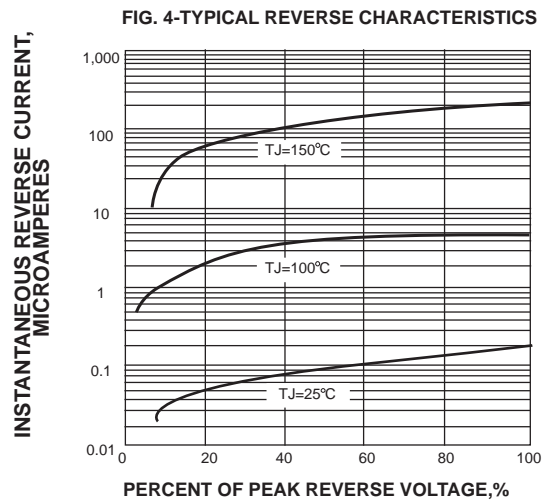
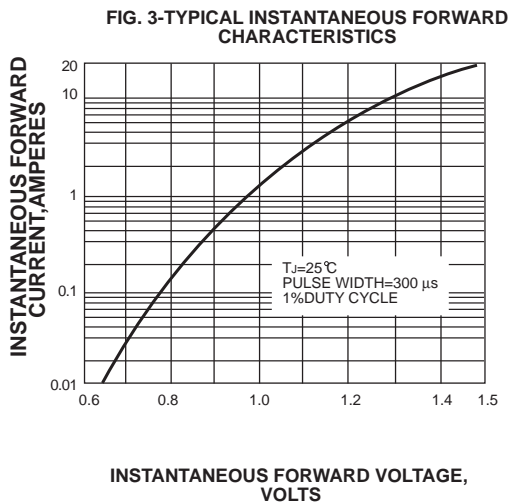
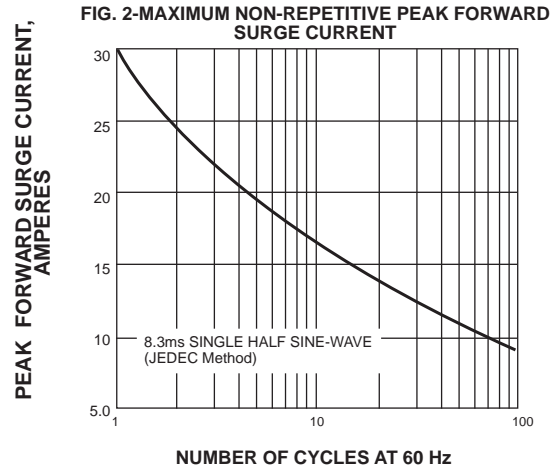
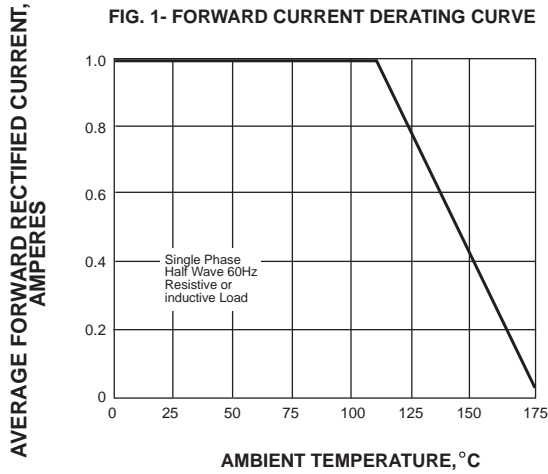
Ratings at 25 °C ambient temperature unless otherwise specified. Single phase, half wave, 60 Hz, resistive or inductive load. For capacitive load, derate current by 20%.

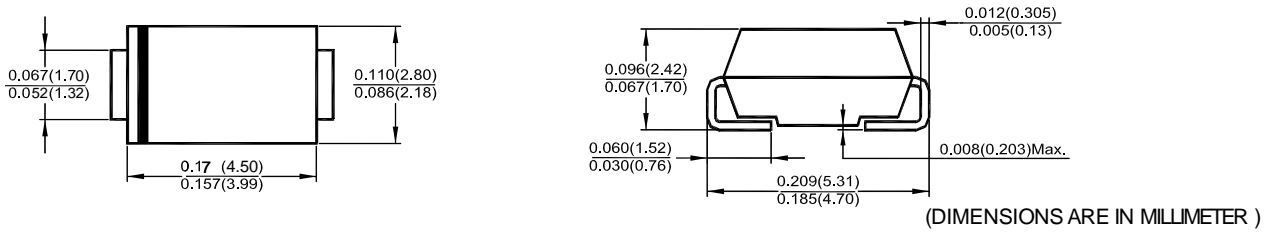
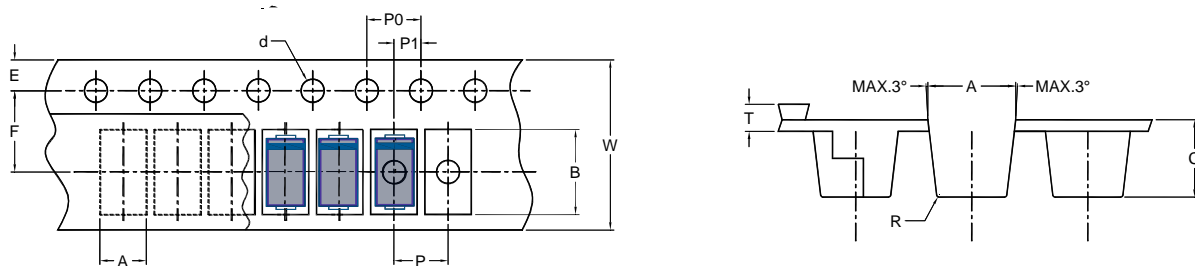
Parameter	Symbol	GS1A	GS1B	GS1D	GS1G	GS1J	GS1K	GS1M	Unit	
Maximum Repetitive Peak Reverse Voltage	$V_{RRM}$	50	100	200	400	600	800	1000	V	
Maximum RMS Voltage	$V_{RMS}$	35	70	140	280	420	560	700	V	
Maximum DC Blocking Voltage	$V_{DC}$	50	100	200	400	600	800	1000	V	
Maximum Average Forward Rectified Current at $T_L = 75\text{ }^\circ\text{C}$	$I_{(A)}$	1							A	
Peak Forward Surge Current 8.3ms Single Half Sine-wave Superimposed on Rated Load (JEDEC)	$I_{FSM}$	30							A	
Maximum Instantaneous Forward Voltage at 1 A	$V_F$	1.1							V	
Maximum DC Reverse Current at Rated DC Blocking Voltage	$I_R$	$T_A = 25\text{ }^\circ\text{C}$							5	$\mu\text{A}$
		$T_A = 125\text{ }^\circ\text{C}$							50	
Typical Junction Capacitance 1)	$C_J$	15							pF	
Maximum Thermal Resistance 2)	$R_{\theta JA}$	75							$^\circ\text{C/W}$	
Operating and Storage Temperature Range	$T_{J, TS}$	- 50 to + 150							$^\circ\text{C}$	

Note: 1.Measured at 1MHz and applied reverse voltage of 4.0V D.C.

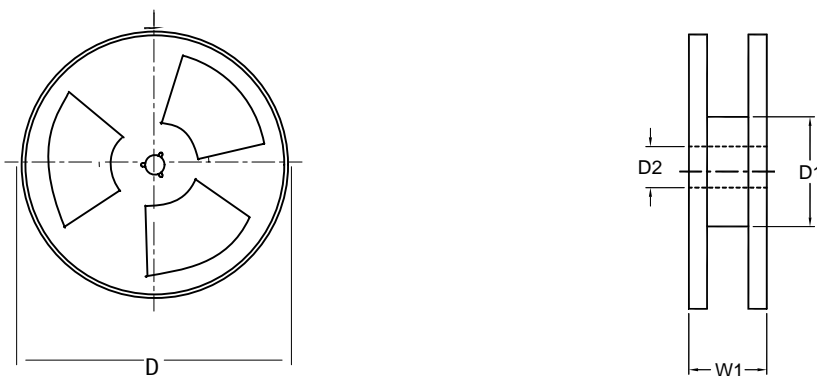
2.P.C.B. mounted with 0.2x0.2"(5.0x5.0mm) copper pad areas

**Typical Characteristics**



**SMA Package Outline Dimensions**

**SMA Embossed Carrier Tape**


DIMENSIONS ARE IN MILLIMETER											
TYPE	A	B	C	d	E	F	P	P0	P1	T	W
SMA	3.0	5.4	2.4	1.5	1.5	5.65	4	4	2	0.3	12
TOLERANCE	±0.1	±0.1	±0.1	±0.1	±0.1	±0.05	±0.1	±0.1	±0.1	±0.05	±0.2

**SMA Reel**


DIMENSIONS ARE IN MILLIMETER				
REEL OPTION	D	D1	D2	W1
7" DIA	178	50 min.	13	16.8
TOLERANCE	±2	±0.1	±0.5	±2