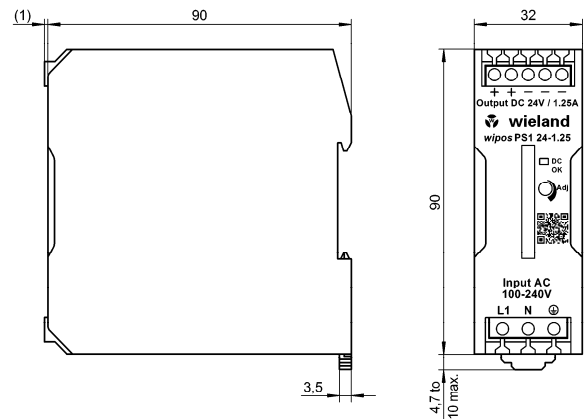
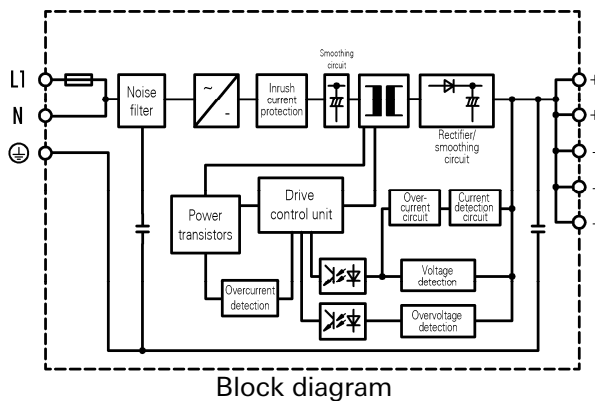




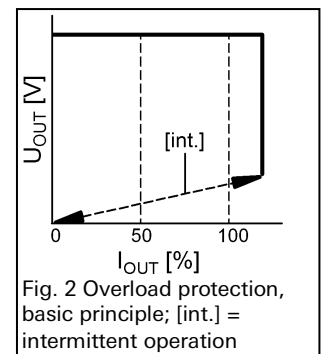
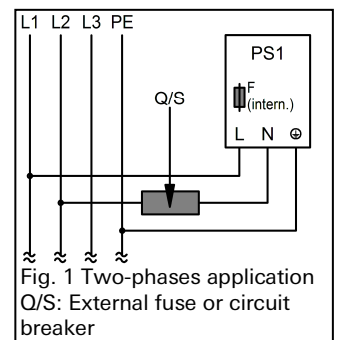
wipos PS1 1.25
Switching power supply
24 V DC/1.25 A
81.000.6510.0

- Primary switching power supply, single phase
- Output: 24 V DC/1.25 A (adjustable 21.6 - 27.6 V DC)
- Input: 85 - 264 V AC; 90 - 350 V DC
- Parallel operation possible (2 devices)
- Full load up to 60 °C
- Vertical mount
- UL1310 class 2 power supply



Technical data

wipos PS1 1.25	Part number: 81.000.6510.0
Input (L, N)	
Rated voltage AC	100 ... 240 V AC
Voltage range AC	85 ... 264 V AC
Line frequency AC	47 ... 450 Hz
Voltage range DC	90 ... 350 V DC
Rated input current 115/230 V AC typ.	0.58 A/0.36 A
Inrush current 115/230 V AC max.	16 A/32 A (5 ms)
Input fuse	2 A/250 V (internal)
Power factor correction filter (PFC)	-
Two-phases application	85 ... 264 V AC (see Fig. 1 Two-phases application) A fuse or circuit breaker has to be connected on N terminal
Output (+, -)	
Rated output power	30 W
Rated output voltage	24 V DC
Rated output current	1.25 A DC
Operation indicator Output voltage OK	"DC OK", LED green Display range ($U_o \geq 19.4$)
Output voltage trim range	21.6 V ... 27.6 V
Rated overload protection	121 % - 160 % (see Fig. 2 Overload protection)
Power boost function	120 %, max. 10 s
Efficiency typ.	86 %
Line regulation	± 0.5 %
Load regulation (U_o)	± 1.5 %
Temperature coefficient ($U_o, I_{o\min}$)	± 0.05 %/K



Technical data

wipos PS1 1.25		Part number: 81.000.6510.0
Ripple & noise	< 30 mV _{ss}	
Hold up time 115/230 V AC	> 23 ms/> 154 ms	
Parallel operation	yes (max. 2 devices)	
Serial operation	yes (max. 2 devices with external diodes)	
General data		
Isolation voltage (input/output)	3000 V AC/4242 V DC	
Isolation resistance (input/output)	100 MOhm	
Operating ambient temperature	-40 °C ... +70 °C (UL: max. 40 °C)	
Storage temperature	-40 °C ... +85 °C	
Derating	A. 60 °C ... 70 °C: 2.5 %/K B. 50 °C ... 70 °C: 2.5 %/K (see Fig. 3 Derating)	
Humidity in operation	0 - 95 % RH, non-condensing	
Ventilation/Cooling	free convection	
MTBF	580,000 h	
Pollution degree	2	
Degree of protection	IP 20	
Safety class	1	
Mounting	DIN rail 35 mm (EN 60715)	
Mounting conditions (free space)	20 mm horizontal, 75 mm vertical	
Dimensions (W x H x D)	32 x 90 x 90 mm	
Weight	195 g	
Housing material	Polycarbonate (PC)	
Connections		
Connector cross section input	solid/stranded	0.25 - 4 mm ² /0.25 - 2,5 mm ² (AWG24 - 12/AWG24 - 14)
Connector cross section output	solid/stranded	0.35 - 4 mm ² /0.35 - 2,5 mm ² (AWG22 - 12/AWG22 - 14)
Connector cross section PE	solid/stranded	min. 2.5 mm ² (AWG14)
Strip length	8 mm	
Torque	0.5 ... 0.6 Nm	
Approvals and Standards		
Standards	SELV: EN50178 / EN60950-1 / UL60950-1 PELV: EN50178 / EN60204-1	
Approvals	CE / cURus / cULus HAZ.LOC / LR	
Control elements		
Adj	Trim potentiometer for fine adjustment of U _o	
Terminal assignment		
+	2 x output voltage 24 V, positive output terminal (internally connected)	
-	3 x output voltage 24 V, negative output terminal (internally connected)	
L	AC: phase conductor, DC: no polarity	
N	AC: neutral conductor, DC: no polarity	
⊕ (PE)	PE (Ground), always connect	

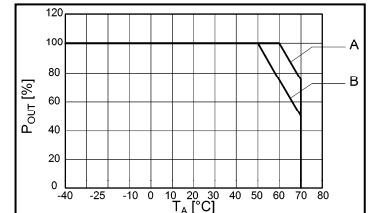


Fig. 3 Derating
A. Standard mounting
B. Face up mounting