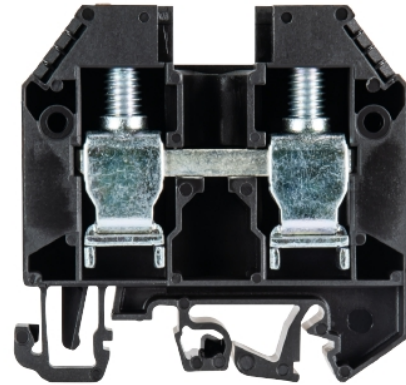


## Data sheet

Commercial Art.No.: 57.516.0155.1

Feed-through terminal WKN16 / U SW/ V0

Feed-through terminal with Screw connection for mounting on TS 35/ TS 32,nominal cross section: 16 mm<sup>2</sup>,Width: 12 mm, Color: black



Commercial Art.No.	57.516.0155.1
EAN	4049088137785
Order Unit	50

Certificates / Approvals



**CAN-Ex**



**ATEX**



**USA-Ex**

## Technical data

### General

Nominal cross section	16 mm <sup>2</sup>
Color	Blue
Width/grid dimension	12 mm
Inflammability class of insulation material acc. with UL94	V0
Mounting method	DIN rail (top hat rail)/G-rail
Terminal blocks for electrical installations	No

### Technical data

Rated current	62 A
Rated voltage	400 V
Rated impulse voltage	6 kV
Pollution degree	3
Connecting plate required	yes
Type of insulation material	Thermoplastic
Length	59.3 mm

### Connection Data

Connection type	screw connection
Minimum cross section solid	4 mm <sup>2</sup>
Maximum cross section solid	10 mm <sup>2</sup>
Minimum cross section fine stranded	4 mm <sup>2</sup>
Maximum cross section fine stranded	16 mm <sup>2</sup>
Minimum cross section stranded	16 mm <sup>2</sup>

Maximum cross section stranded	25 mm <sup>2</sup>
Wire strip length	15 mm
Torque conductor mounting	2 Nm
For N-busbar	3x10 mm

**Technical Data UL/CSA**

Cross section CSA	14-4 AWG
Voltage CSA	600 V
Current CSA	65 A

**Classification**

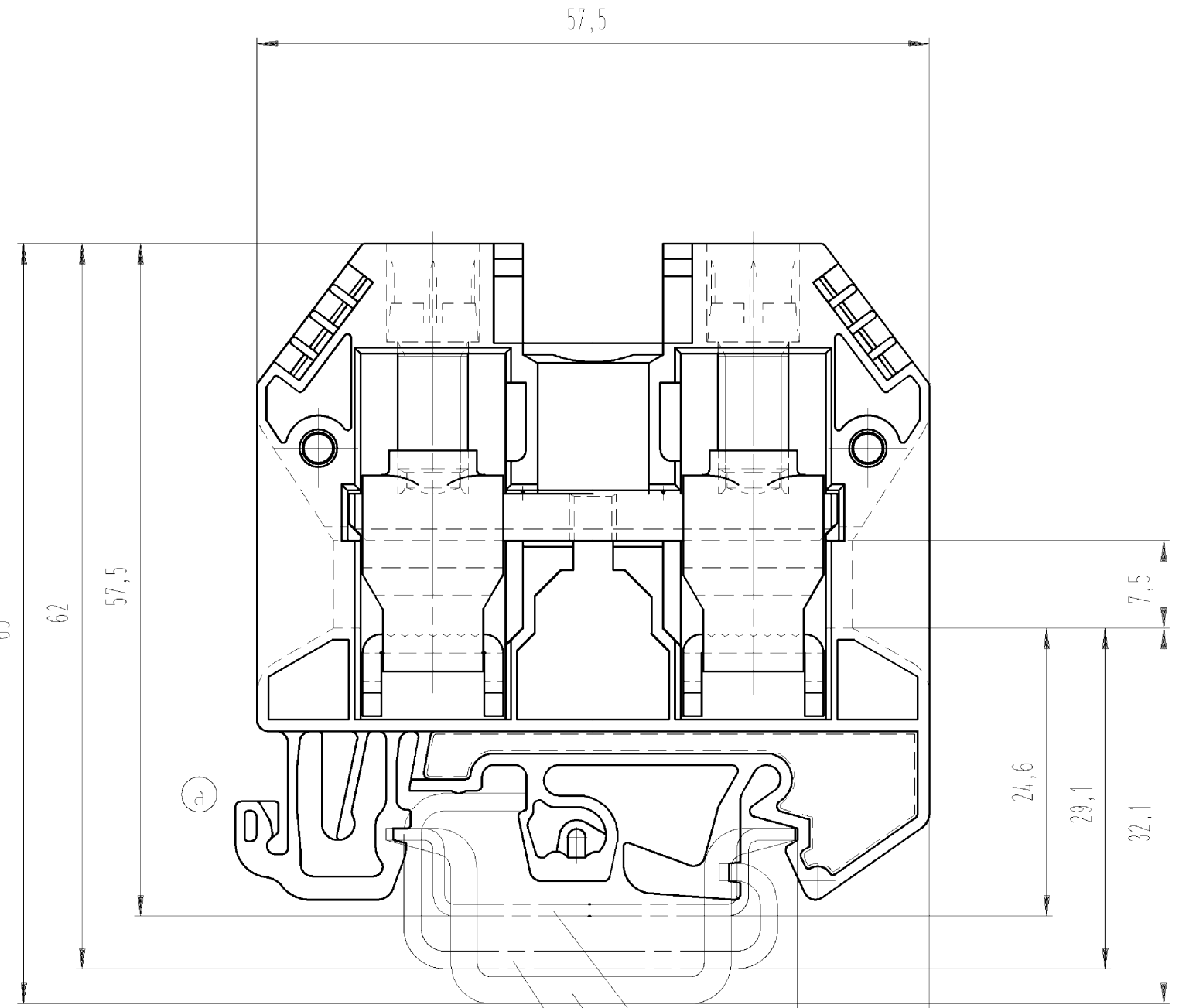
ECLASS 11	
ECLASS 8.1	27141120
ETIM 7.0	EC000897
ETIM 6.0	EC000897
ETIM 5.0	EC000897
ETIM 4.0	EC000897

**Product compliance**

ROHS conformity status	Compliant
REACH-SVHC conformity status	Compliant

These dimensions will be especially checked at delivery  
 Only inspection dimensions  
 With /E marked dimensions are only valid for internal use

Diese Maße werden bei Abnahme besonders geprüft  
 Ausschließlich Prüfmaße  
 Mit /E gekennzeichnete Maße sind nur für interne Zwecke gültig



Hutschiene EN 60715-35x7,5  
 mounting rail EN 60715-35x7,5

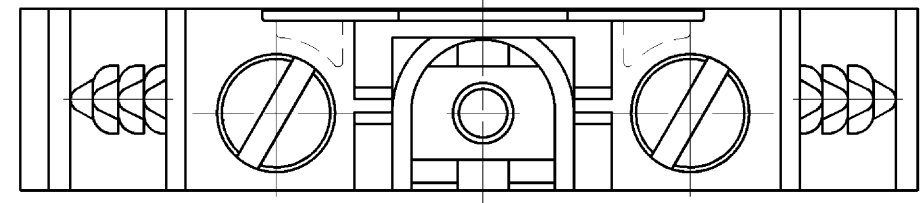
Hutschiene EN 60715-35x15  
 mounting rail EN 60715-35x15

G-Schiene EN 60715-G32  
 G-rail EN 60715-G32

Weitere Daten siehe Katalog  
 further data see catalog

Teile - Nr. part-number	Farbe colour	Typ type
57.516.0155.0	grau/grey	WKN 16/U/VO
57.516.0155.1	schwarz/black	WKN 16/U SCHWARZ/VO
57.516.0155.2	weiß/white	WKN 16/U WEISS/VO
57.516.0155.3	schiefergrau/stone grey	WKN 16/U SCHIEFERGRAU/VO
57.516.0155.5	rot/red	WKN 16/U ROT/VO
57.516.0155.6	blau/blue	WKN 16/U BLAU/VO
57.516.0155.7	grün/green	WKN 16/U Grün/VO
57.516.0155.8	gelb/yellow	WKN 16/U GELB/VO
57.516.0155.9	orange	WKN 16/U ORANGE/VO
* 57.516.0195.0	grau/grey	WKN 16/U/VO
* 57.516.0195.6	blau/blue	WKN 16/U BLAU/VO

\* spezielle Verpackung  
 specific package



Tolerierung nach DIN 7167/Tolerance system acc. to DIN 7167.  
 (This DIN-standard describes the envelope principle. According to the envelope principle the deviations of form and parallelism are limited by the size tolerances).

ja/yes  Stoffverbots- und Deklarationsliste nach UU-TOM-05/03 ist einzuhalten.  
 Conformity with Wieland document UU-TOM-05/03 (list of prohibited / declarable hazardous substances) to be declared!

Freitoleranz nach General tolerance	CAD - Zeichnung, keine manuellen Änderungen CAD - drawing, no manual modifications allowed	1. Verwendung: First Use:	Blatt: 1 von 1 Sheet: of 1
	Werkstoff/Material	2004 Tag/Date Name	Zeichnung Nr./Drawing No. Index
		gezeichnet drawn 27.09. Schmitt J.	T 57.516.0155.0 01K b
	Maßstab/Scale	geprüft checked	
	%	Normgepr. Stand. check	Maße in mm/Dimensions are in mm
	Vol. mm <sup>3</sup> Ofl./Surf. mm <sup>2</sup>	Ersatz für/Replacement for: -	
b 07.04.2011/ a 18.10.2006/ Index Datum / Blatt Date / Sheet	<b>wieland</b> Elektrische Verbindungen	Type	Benennung/Tittle <b>DURCHGANGSKLEMME</b> Modular terminal
Änderung/Revision			

Weitergabe sowie Vervielfältigung dieses Dokuments, Verwertung und Mitteilung seines Inhalts sind verboten, soweit nicht ausdrücklich gestattet.  
 The reproduction, distribution and utilization of this document as well as the communication of its contents to others without express authorization is prohibited.

575160155001K\_2 CADW2035 Schmitt: 2011-04-08T11:36:54 1.000