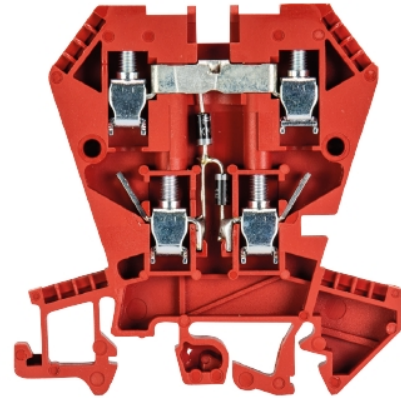


Data sheet

Commercial Art.No.: 57.404.7955.5

Multi-tier terminal WK 4 E / U G2/V0

Multi-tier function terminal block with screw connection for mounting on TS 35 and TS 32, nominal cross section 4 mm², width 6 mm, color red



Commercial Art.No.	57.404.7955.5
EAN	4015573575561
Order Unit	100

Certificates / Approvals



Technical data

General

Nominal cross section	4 mm ²
Color	Red
Number of levels	2
Number of clamp positions per level	2
Width/grid dimension	6 mm
Insulating housing	PA666
Inflammability class of insulation material acc. with UL94	V0
Mounting method	DIN rail (top hat rail)/G-rail
Terminal blocks for electrical installations	No
Type of component	Diode

Technical data

Rated current	1 A
Rated voltage	400 V
Pollution degree	3
Closing plate required	yes
Type of insulation material	Thermoplastic
Length	61.6 mm

Connection Data

Connection type 1	screw connection
Connection type 2	screw connection
Minimum cross section solid	0.5 mm ²

Maximum cross section solid	4 mm ²
Minimum cross section fine stranded	0.5 mm ²
Maximum cross section fine stranded	4 mm ²
Wire strip length	9 mm
Torque conductor mounting	0.5 Nm

Technical Data UL/CSA

Cross section UL	22-10 AWG
Voltage UL	300 V
Current factory wiring	20 A
Current field wiring	20 A
Cross section CSA	20-12 AWG
Voltage CSA	300 V
Current CSA	10 A

Classification

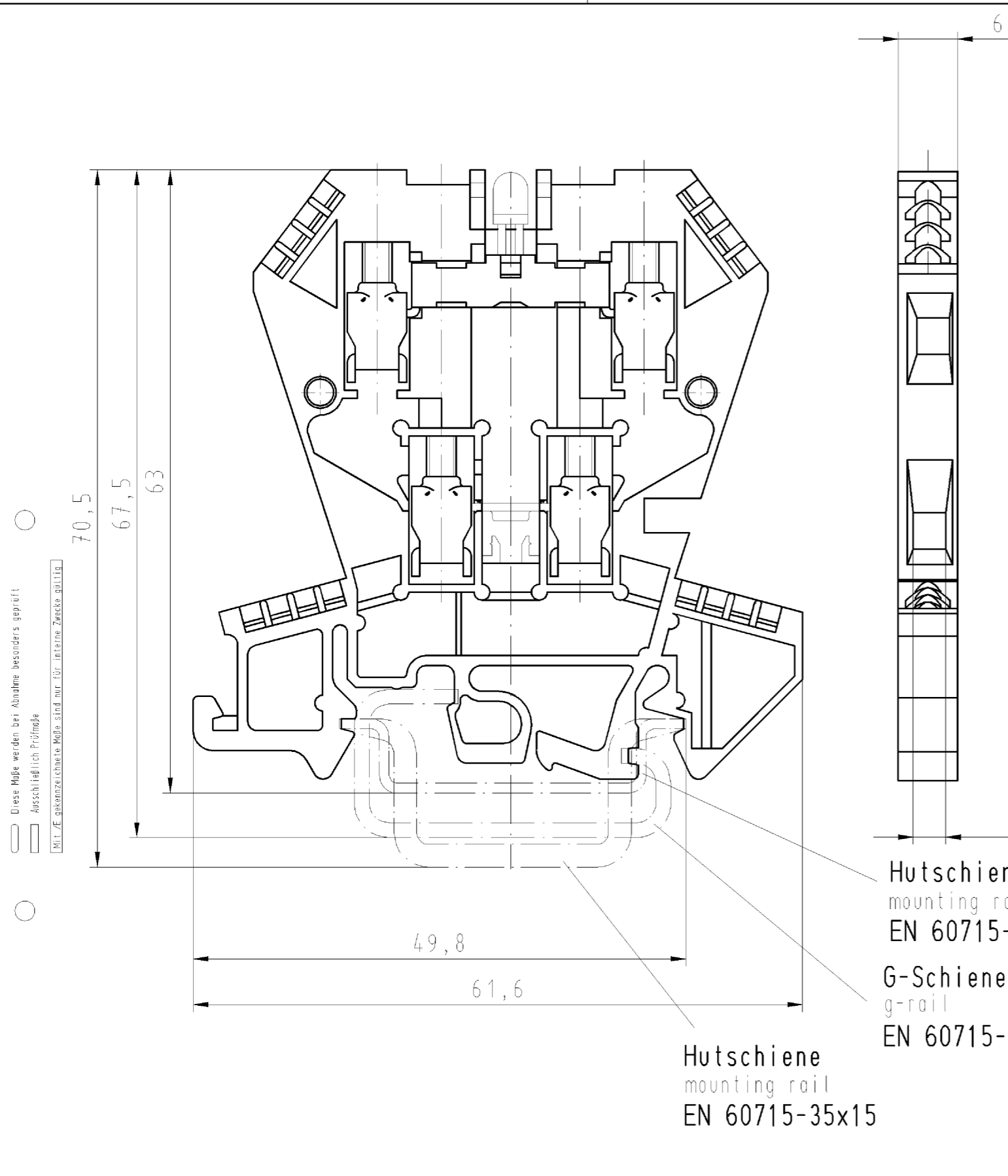
ECLASS 11	
ECLASS 8.1	27141127
ETIM 7.0	EC000903
ETIM 6.0	EC000903
ETIM 5.0	EC000903
ETIM 4.0	EC000903
ETIM 3.0	EC000903

Accessories

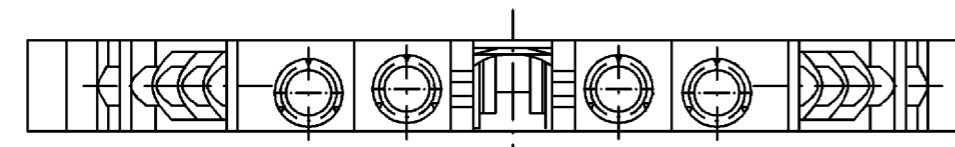
Commercial Art.No.:	Article-type description:	Description:
Z7.256.4227.0	Jumper bar IVBS WK4 E - 2	Jumper comp, insulated for DIN rail terminal blocks type WK ..., 2 - pole
Z7.256.4327.0	Jumper bar IVBS WK4 E - 3	Jumper comp, insulated for DIN rail terminal blocks type WK ..., 3 - pole
Z7.256.4427.0	Jumper bar IVBS WK4 E - 4	Jumper comp, insulated for DIN rail terminal blocks type WK ..., 4 - pole
Z7.256.4527.0	Jumper bar IVBS WK4 E - 5	Jumper comp, insulated for DIN rail terminal blocks type WK ..., 5 - pole
Z7.256.4627.0	Jumper bar IVBS WK4 E - 6	Jumper comp, insulated for DIN rail terminal blocks type WK ..., 6 - pole
Z7.256.4727.0	Jumper bar IVBS WK4 E - 7	Jumper comp, insulated for DIN rail terminal blocks type WK ..., 7 - pole
Z7.256.4827.0	Jumper bar IVBS WK4 E - 8	Jumper comp, insulated for DIN rail terminal blocks type WK ..., 8 - pole
Z7.256.4927.0	Jumper bar IVBS WK4 E - 9	Jumper comp, insulated for DIN rail terminal blocks type WK ..., 9 - pole
Z7.256.5027.0	Jumper bar IVBS WK4 E - 10	Jumper comp, insulated for DIN rail terminal blocks type WK ..., 10 - pole
Z7.256.5127.0	Jumper bar IVBS WK4 E - 11	Jumper comp, insulated for DIN rail terminal blocks type WK ..., 11 - pole
Z7.256.5227.0	Jumper bar IVBS WK4 E - 12	Jumper comp, insulated for DIN rail terminal blocks type WK ..., 12 - pole
98.190.0000.0	Mounting rail TS 32 UNPERF - l:2000mm	Mounting rail G 32, unslotted, Höhe 5,5 mm, length 2 m, material steel. galv. zinc-plated and dichromated

98.190.1000.0	Mounting rail TS 32 PERF 15mm - l:2000mm	Mounting rail G 32, slotted, Höhe 15 mm, length 2 m, material steel. galv. zinc-plated and dichromated
98.210.0000.0	Mounting rail TS 32 UNPERF AL - l:2000mm	Mounting rail G 32, unslotted, Höhe 15 mm, length 2 m, material Aluminium
98.220.0000.0	Mounting rail TS 32 UNPERF CU - l:2000mm	Mounting rail G 32, unslotted, Höhe 15 mm, length 2 m, material E copper
98.300.0000.0	Mounting rail TS 35x7,5 UNPERF - l:2000mm	Mounting rail TS 35, unslotted, size 7,5 mm, length 2 m, material steel. galv. zinc-plated and dichromated
98.300.1000.0	Mounting rail TS 35x7,5 PERF 15mm - l:2000mm	Mounting rail TS 35, slotted, size 7,5 mm, length 2 m, material steel. galv. zinc-plated and dichromated
98.300.1900.0	Mounting rail TS 35x7,5 PERF 25mm - l:2000mm	Mounting rail TS 35, slotted, size 7,5 mm, length 2 m, material steel. galv. zinc-plated and dichromated
98.360.0000.0	Mounting rail TS 35x15-2,3 UNPERF - l:2000mm	Mounting rail TS 35, unslotted, size 15 mm, length 2 m, material steel. galv. zinc-plated and dichromated
98.360.0004.0	Mounting rail TS 35x15-2,3 UNPERF FZN - l:2000mm	Mounting rail TS 35, unslotted, size 15 mm, length 2 m, material steel, hot galvanized
98.370.0000.0	Mounting rail TS 35x15 UNPERF - l:2000mm	Mounting rail TS 35, unslotted, size 15 mm, length 2 m, material steel. galv. zinc-plated and dichromated
98.370.1000.0	Mounting rail TS 35x15 PERF 15mm - l:2000mm	Mounting rail TS 35, slotted, size 15 mm, length 2 m, material steel. galv. zinc-plated and dichromated
98.380.0000.0	Mounting rail TS 35x15-2,3 UNPERF CU - l:2000mm	Mounting rail TS 35, unslotted, size 15 mm, length 2 m, material E copper
07.311.4055.0	End plate AP 4 E /V0	End plate for DIN rail terminal blocks type WK 4 E..., color: grey
07.311.5055.0	Partition TW 4 E /V0	Partition for DIN rail terminal blocks type WK 4 E..., color: grey
Z7.210.3227.0	Jumper bar 9215 - 2	Cross connector for DIN rail terminal blocks type WK 4 ..., 2-pole
Z7.210.3327.0	Jumper bar 9215 - 3	Cross connector for DIN rail terminal blocks type WK 4 ..., 3-pole
Z7.210.3427.0	Jumper bar 9215 - 4	Cross connector for DIN rail terminal blocks type WK 4 ..., 4-pole
Z7.210.3527.0	Jumper bar 9215 - 5	Cross connector for DIN rail terminal blocks type WK 4 ..., 5-pole
Z7.210.3627.0	Jumper bar 9215 - 6	Cross connector for DIN rail terminal blocks type WK 4 ..., 6-pole
Z7.255.2227.0	Jumper bar IVB WK4 E - 2	Jumper comp, insulated for DIN rail terminal blocks type WK ..., 2 - pole
Z7.255.2327.0	Jumper bar IVB WK4 E - 3	Jumper comp, insulated for DIN rail terminal blocks type WK ..., 3 - pole
Z7.255.2427.0	Jumper bar IVB WK4 E - 4	Jumper comp, insulated for DIN rail terminal blocks type WK ..., 4 - pole
Z7.255.2527.0	Jumper bar IVB WK4 E - 5	Jumper comp, insulated for DIN rail terminal blocks type WK ..., 5 - pole
Z7.255.2627.0	Jumper bar IVB WK4 E - 6	Jumper comp, insulated for DIN rail terminal blocks type WK ..., 6 - pole
Z7.255.2727.0	Jumper bar IVB WK4 E - 7	Jumper comp, insulated for DIN rail terminal blocks type WK ..., 7 - pole
Z7.255.2827.0	Jumper bar IVB WK4 E - 8	Jumper comp, insulated for DIN rail terminal blocks type WK ..., 8 - pole
Z7.255.2927.0	Jumper bar IVB WK4 E - 9	Jumper comp, insulated for DIN rail terminal blocks type WK ..., 9 - pole
Z7.255.3027.0	Jumper bar IVB WK4 E - 10	Jumper comp, insulated for DIN rail terminal blocks type WK ..., 10 - pole
Z7.255.3127.0	Jumper bar IVB WK4 E - 11	Jumper comp, insulated for DIN rail terminal blocks type WK ..., 11 - pole
Z7.255.3227.0	Jumper bar IVB WK4 E - 12	Jumper comp, insulated for DIN rail terminal blocks type WK ..., 12 - pole
Z7.271.2227.0	Insulated jumper bar IVB WK4 E/U- 2	Cross connector, insulated for DIN rail terminal blocks type WK ..., 2 - pole
Z7.271.2327.0	Insulated jumper bar IVB WK4 E/U- 3	Cross connector, insulated for DIN rail terminal blocks type WK ..., 3 - pole

Z7.271.2427.0	Insulated jumper bar IVB WK4 E/U- 4	Cross connector, insulated for DIN rail terminal blocks type WK ..., 4 - pole
Z7.271.2527.0	Insulated jumper bar IVB WK4 E/U- 5	Cross connector, insulated for DIN rail terminal blocks type WK ..., 5 - pole
Z7.271.2627.0	Insulated jumper bar IVB WK4 E/U- 6	Cross connector, insulated for DIN rail terminal blocks type WK ..., 6 - pole
Z7.271.3027.0	Insulated jumper bar IVB WK4 E/U-10	Cross connector, insulated for DIN rail terminal blocks type WK ..., 10 - pole
Z7.271.3227.0	Insulated jumper bar IVB WK4 E/U-12	Cross connector, insulated for DIN rail terminal blocks type WK ..., 12 - pole
98.300.1800.0	Mounting rail TS 35x7,5 PERF 18mm - l:2000mm	Mounting rail TS 35, slotted, size 7,5 mm, length 2 m, material steel. galv. zinc-plated and dichromated



○ Diese Maße werden bei Abnahme besonders geprüft
 ○ Ausschließlich Prüfmaße
 ○ Mit AE gekennzeichnete Maße sind nur für interne Zwecke gültig



Weitere Daten siehe Katalog
 further data see catalog

Teile-Nr. /part-nr.	Typ/type WK4 E/U...	LED-Farbe LED-colour	mit gedrehter Diode with inverted diode	
57.404.8355.5	...G-URL			
57.404.8055.9	...G-ULR		X	
57.404.8255.5	...G0			
57.404.8155.9	...GU		X	
57.404.7255.5	...LD+PO	rot/red		
57.404.8755.5	..LDG+PO24	grün/green		
57.404.7455.9	..LD-PO 24	rot/red		
57.404.7955.5	...G2			
57.404.8855.9	...G2/1		X	
57.404.8455.5	...LD 42	rot/red		
57.404.6255.9	...LD+PO 24LD	rot/red		

Weitergabe sowie Vervielfältigung dieses Dokuments, Verwertung und Mitteilung
 seiner Inhalte ist ohne schriftliche Genehmigung der Wieland-Werk AG.
 The publication, distribution and utilization of the contents of this document as well as the
 communication of its contents to others without express authorization is prohibited.

R=2,2K
0,35W

R=2,2K
0,35W

1A/1000V

1A/1000V
R=6,8K
0,6W

1A/1000V
R=2,2K
0,35W

Freitoleranz nach		CAD - Zeichnung, keine manuellen Änderungen			1. Verwendung: -		Bl.: 1 von 1		
	Maßstab	Werkstoff und Oberfläche:		2003	Tag	Name		Zeichnung Nr.	Index
	2:1			Entworfen	15.05.	Schmitt J.			
				Geprüft	-	-		Ersatz für: -	
				Vol.	mm ³	Dtl.			
				Normgepr.	-	-			
Buchstabe		Datum / Blatt		Änderung		Benennung		ETAGENKLEMME modular double-deck terminal	
				wieland Elektrische Verbindungen		WK 4 E/U ...			