

Data sheet

Commercial Art.No.: Z5.530.1025.0

PCB pin header 8142... /10 D1.3/1.0

PCB pin header, 10 poles, pitch: 5 mm, type of packing: carton, color: grey



Commercial Art.No.	Z5.530.1025.0
EAN	4015573142299
Order Unit	50

Certificates / Approvals



Technical data

General

Modular spacing	5 mm
Soldering process	Wave soldering
Packaging	Carton
Number of poles	10
Number of levels	1
Marking	No
Fastening	None
Mating direction towards (circuit) board	90°

Technical data

Rated current	8 A
Overvoltage Category I	1000 V
Overvoltage Category II	250 V
Overvoltage Category III	200
Rated impulse voltage	4 kV

Technical Data UL/CSA

Voltage UL	300 V
Current field wiring	15 A
Current factory wiring	15 A
Voltage CSA	300 V
Current CSA	15 A

Other

Type of insulation material	Thermoplastic
Color	Grey

Height	12 mm
Length	50 mm
Depth	2.8 mm
Material contact base	CuZn
Material contact surface	Sn

Classification

ECLASS 11	
ECLASS 8.1	27440402
ETIM 7.0	EC002637
ETIM 6.0	EC002637
ETIM 5.0	EC002637
ETIM 4.0	EC002637

Product compliance

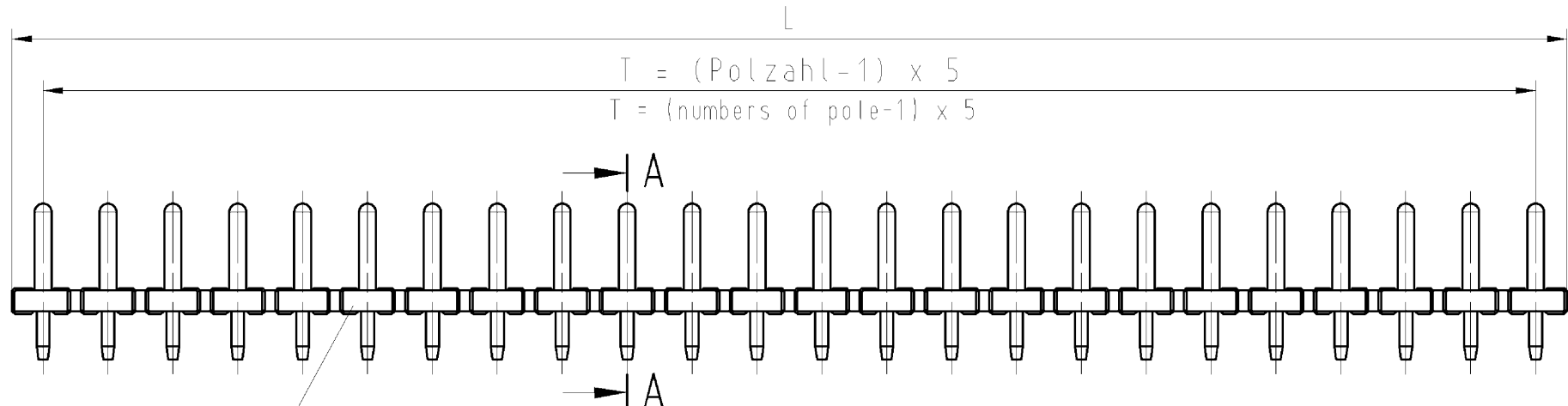
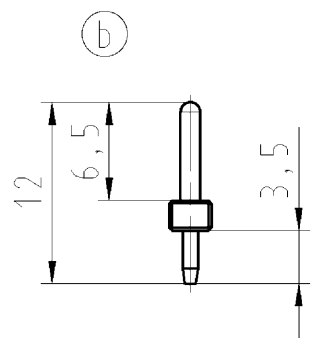
ROHS conformity status	Compliant/Exempted
ROHS exceptions	III-6(c)
REACH-SVHC conformity status	Duty-To-Declare
REACH-SVHC substances	Lead
REACH-SVHC CAS numbers	7439-92-1

Fits with

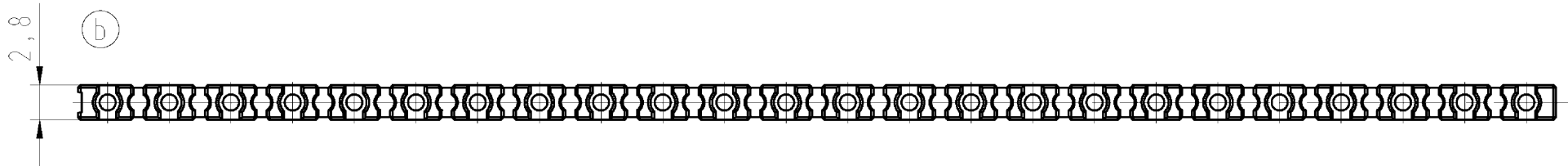
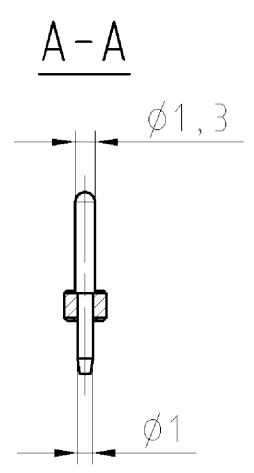
Commercial Art.No.:	Article-type description:	Description:
25.600.3053.0	Pluggable PCB Terminal 8142 / 10	Pluggable-PCB terminal with screw connection with wire protection, 10 poles, printed version, max. cross section: 2.5 mm ² , pitch: 5 mm, type of packing: carton, color: grey
27.602.1053.0	Pluggable PCB Terminal 8142 Z / 10 OB	Pluggable-PCB terminal, 10 poles, with insulating plate, pitch: 5 mm, type of packing: carton, color: grey
25.617.1055.0	Pluggable PCB Terminal 8142 ZP/10	Pluggable-PCB terminal with screw connection with rising cage clamp system, 10 poles, printed version, with insulating plate, max. cross section: 2.5 mm ² , pitch: 5 mm, type of packing: carton, color: grey
25.617.1055.1	Pluggable PCB Terminal 8142 ZP/10	Pluggable-PCB terminal with screw connection with rising cage clamp system, 10 poles, printed version, with insulating plate, max. cross section: 2.5 mm ² , pitch: 5 mm, type of packing: carton, color: black
25.617.1055.7	Pluggable PCB Terminal 8142 ZP/10	Pluggable-PCB terminal with screw connection with rising cage clamp system, 10 poles, printed version, with insulating plate, max. cross section: 2.5 mm ² , pitch: 5 mm, type of packing: carton, color: green
25.617.4055.0	Pluggable PCB Terminal 8142 ZP/10 OB	Pluggable-PCB terminal with screw connection with rising cage clamp system, 10 poles, with insulating plate, max. cross section: 2.5 mm ² , pitch: 5 mm, type of packing: carton, color: grey
25.617.4055.7	Pluggable PCB Terminal 8142 ZP/10 OB	Pluggable-PCB terminal with screw connection with rising cage clamp system, 10 poles, with insulating plate, max. cross section: 2.5 mm ² , pitch: 5 mm, type of packing: carton, color: green
25.602.3053.0	Pluggable PCB Terminal 8142 / 10 OB	Pluggable-PCB terminal with screw connection with wire protection, 10 poles, max. cross section: 2.5 mm ² , pitch: 5 mm, type of packing: carton, color: grey

These dimensions will be especially checked at delivery
Only inspection dimensions
With /E marked dimensions are only valid for internal use

Diese Maße werden bei Abnahme besonders geprüft
Ausschließlich Prüfmaße
Mit /E gekennzeichnete Maße sind nur für interne Zwecke gültig



Farbe: grau
colour: grey



.X	Oberfläche Kontaktstifte surface contact pin
.0	Zinn / tin
.8	Silber / silver

Z5.530.2425.X	24	23x5=115	119,8
Z5.530.2325.X	23	22x5=110	114,8
Z5.530.2225.X	22	21x5=105	109,8
Z5.530.2125.X	21	20x5=100	104,8
Z5.530.2025.X	20	19x5= 95	99,8
Z5.530.1925.X	19	18x5= 90	94,8
Z5.530.1825.X	18	17x5= 85	89,8
Z5.530.1725.X	17	16x5= 80	84,8
Z5.530.1625.X	16	15x5= 75	79,8
Z5.530.1525.X	15	14x5= 70	74,8
Z5.530.1425.X	14	13x5= 65	69,8
Z5.530.1325.X	13	12x5= 60	64,8
Z5.530.1225.X	12	11x5= 55	59,8
Z5.530.1125.X	11	10x5= 50	54,8
Z5.530.1025.X	10	9x5= 45	49,8
Z5.530.0925.X	9	8x5= 40	44,8
Z5.530.0825.X	8	7x5= 35	39,8
Z5.530.0725.X	7	6x5= 30	34,8
Z5.530.0625.X	6	5x5= 25	29,8
Z5.530.0525.X	5	4x5= 20	24,8
Z5.530.0425.X	4	3x5= 15	19,8
Z5.530.0325.X	3	2x5= 10	14,8
Z5.530.0225.X	2	1x5= 5	9,8
Teile - Nr. part - no.	Polzahl pole	T	L

Gezeichnete Ausführung/drawn version: Z5.530.2425.0

Weitere Daten siehe Katalog
further data see catalog

Tolerierung Size ISO 14405/Tolerance system Size ISO 14405. (This ISO-standard describes the envelope principle. According to the envelope principle the deviations of form and parallelism are limited by the size tolerances).				ja/yes <input checked="" type="checkbox"/> Stoffverbots- und Deklarationsliste nach UU-TOM-05/03 ist einzuhalten. Conformity with Wieland document UU-TOM-05/03 (list of prohibited / declarable hazardous substances) to be declared!					
Freitoleranz nach General tolerance		DIN ISO 2768 - m		CAD - Zeichnung, keine manuellen Änderungen CAD - drawing, no manual modifications allowed		1. Verwendung: First Use:		Blatt: 1 von 1 Sheet: of 1	
		Werkstoff/Material		2008 Tag/Date Name		Zeichnung Nr./Drawing No.		Index	
		Maßstab/Scale		gezeichnet drawn		T		Z5.530.0225.0 01K b	
		2:1		geprüft checked					
		Vol. mm ³ Ofl./Surf. mm ²		Normgepr. Stand. check				Maße in mm/Dimensions are in mm	
b 16.10.2012/		wieland		Ersatz für/Replacement for: -		Type		Benennung/Tittle	
a 07.03.2011/		Elektrische Verbindungen						PCB PIN STRIP HEADER LP_STIFTLISTE	
Index Datum / Blatt Date / Sheet								für/for 8142 2 - 24 polig/poles	
Änderung/Revision									

Weitergabe sowie Vervielfältigung dieses Dokuments, Verwertung und Mitteilung seines Inhalts sind verboten, soweit nicht ausdrücklich gestattet.
The reproduction, distribution and utilization of this document as well as the communication of its contents to others without express authorization is prohibited.

Z55300225001K_2 CADW2037.dwg 2012-10-16 11:28:26 1:000